

# Wheelchair Scales

## Specifications

### Capacity:

1,000 lb x 0.2 lb (450 kg x 0.1 kg)

### Platform Dimensions:

(W x L) 36 x 36 in

### Power:

9 VDC, provided by six AA alkaline batteries (included) or AC adaptor (optional)

### Battery Type:

Six AA alkaline

### Battery Use:

25 hours continuous use with batteries

### Operating Temperature:

50° F to 104° F (14° C to 40° C)

### Warranty:

Two-year limited warranty

### Approvals:

c-Met, pending



Model SD-1150-WP

In Ground  
Scale Package

## Standard Features

- Mild steel painted scale with anti-slip rubber surface
- (H x L) 36 x 30 in handrail and mounting hardware
- Large 1 in LCD display
- Push button or manual entry of tare weight
- Unit of measure: lb only, kg only, lb/kg
- 10 ft interface cable from scale to indicator
- EHR capable
- BMI (body mass index) function
- Hold function

## Part Number/Price

| Part # | Model        | Capacity  | Est. Weight | Price      |
|--------|--------------|---|-------------|------------|
| 150707 | SD-1150-WP   | 1,000 lb x 0.2 lb (450 kg x 0.1 kg) with USB                | 295 lb      | \$1,746.00 |
| 168360 | SD-1150-WPBT | 1,000 lb x 0.2 lb (450 kg x 0.1 kg) with USB and Bluetooth® | 295 lb      | \$1,824.00 |

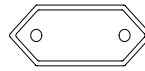


## Options/Accessories

| Part # | Description                                    | Price    |
|--------|--|----------|
| 133077 | 9 VDC adaptor, 120 V/230 V auto switching †    | \$15.00  |
| 102508 | 9 VDC adaptor, 230 V ††                        | \$20.00  |
| 81076  | Epson TM-U220 tape printer                     | \$420.00 |
| 186830 | Printer cable, 25-pin D-sub male to RJ45, 6 ft | \$65.00  |



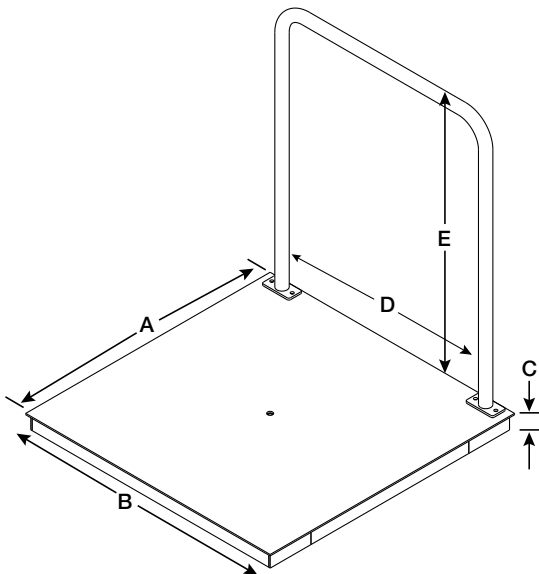
† NEMA 1-15 Plug



†† CEE 7/16 Plug

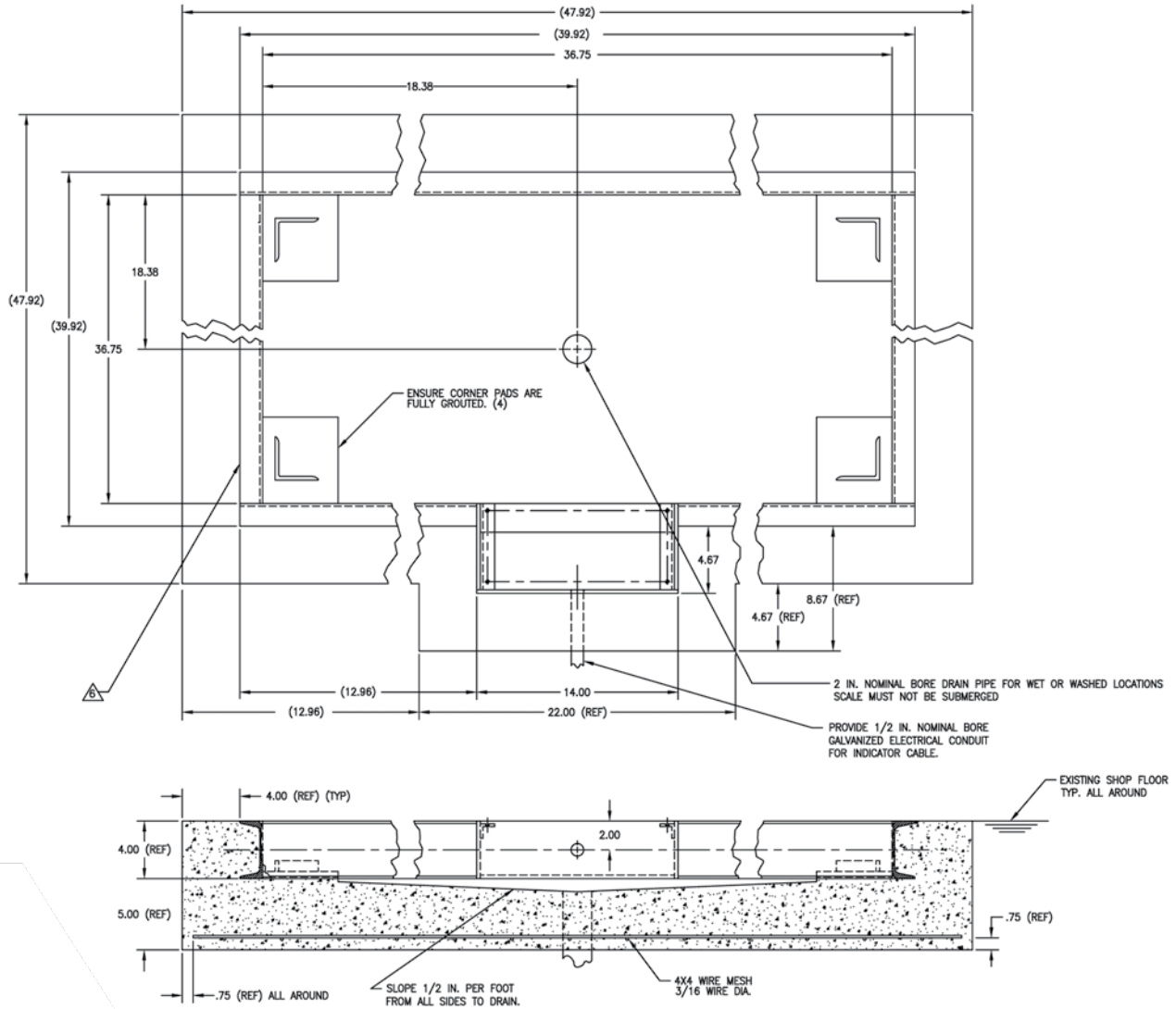
## Dimensions

|   |       |   |         |
|---|-------|---|---------|
| A | 36 in | D | 31.5 in |
| B | 36 in | E | 37 in   |
| C | 3 in  |   |         |



# Wheelchair Scales

## Pit Frame Concrete Details



**NOTE:**

1. USE CONCRETE OF MINIMUM YIELD STRENGTH 5000 PSI OR 6-BAG MIX.
  2. ALLOW 7 DAYS TO CURE. WET CONCRETE PERIODICALLY DURING THIS TIME.
  3. DIMENSIONS SHOWN ASSUME FIRM, STABLE SOIL CONDITIONS. WHEN SOIL CONDITIONS ARE NOT ADEQUATE, PLACE FOUNDATION AT SUFFICIENT DEPTH.
  4. IN WET OR WASHDOWN APPLICATIONS WE RECOMMEND THE USE OF HERMETICALLY SEALED LOAD CELLS, AND THAT THE JUNCTION BOX BE MOUNTED REMOTELY IN A DRY LOCATION.
  5. WIRE MESH TO HAVE MINIMUM .75 COVER BOTTOM AND SIDES.
- △ ON STAINLESS STEEL VERSIONS, TWO PIECES OF 2 INCH ANGLE WILL BE SUBSTITUTED FOR THE 4 INCH CHANNEL.