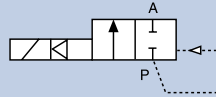


Isolated Pilot Solenoid Valve for Aggressive Chemicals

0142



Supplied as shown



1/2" - 2" UNION, 7-87 PSI

- Unique isolated technology for slightly contaminated fluids
- Designed for use with aggressive chemicals
- Rugged molded diaphragm



Servo-assisted brass plunger piloted solenoid valve with un-coupled rugged diaphragm. This valve is specifically designed for aggressive fluids where a chemically compatible solution is required.

Technical Data

Pressure range	7-87 PSI, Max.
Temperature media	122 °F
Ambient temperature	104 °F Max. (PVC), 131 °F, Max. (PVDF)
Body material	PVC or PVDF
Seal material	EPDM or FKM
Coil material	Epoxy
Power consumption	DC: 5 W, AC: 20 VA (inrush), 11 VA (hold)
Protection class	IP65
Electrical Connection	2508 cable plug Form A (included)
Accreditations	CE

Options

- Normally open (reverse pilot)
- Electrical position feedback
- Impulse coil
- Range of diaphragm seals to suit aggressive media
- Cable plug with conduit entry (2509)
- Cables plug with LED
- Cable plug with varistor
- CSA certification

Envelope Dimensions [inch] (see datasheet for details)

2508 cable plug Form A included (see page 30)

Size	A	B	C
1/2"	5.83	2.46	5.83
3/4"	6.06	2.46	5.83
1"	7.48	3.35	6.87
1 1/4"	7.80	3.35	6.87
1 1/2"	10.00	4.53	8.35
2"	10.55	0.00	8.35

Ordering Chart

Port connection	Orifice [mm]	Cv	Pressure range [PSI]	Item no. Voltage/Frequency [V/Hz]			
				24 V DC	24 V/60 Hz	120 V/60 Hz	240 V/60 Hz
PVC Body, EPDM Seal							
NPT 1/2"	13	5.8	7-87	453 994	454 302	453 349	457 214
NPT 3/4"	20	7.0	7-87	453 988	453 987	453 350	98101215
NPT 1"	25	16.3	7-87	454 004	461 543	453 351	456 283
NPT 1 1/4"	32	18.6	7-87	98106217	-	454 102	98100283
NPT 1 1/2"	40	35.0	7-87	98100165	98101068	453 352	98101055
NPT 2"	50	41.9	7-87	98101634	98100574	453 353	98101454
PVDF body (metric fusion connection), FKM Seal							
20 mm	13	5.8	7-87	088 662	228 958	98105589	-
25 mm	20	7.0	7-87	088 661	150 496	126 550	-
31 mm	25	16.3	7-87	089 941	-	98104203	-
40 mm	32	18.6	7-87	089 946	-	-	-
50 mm	40	35.0	7-87	-	-	138 766	-
63 mm	50	41.9	7-87	-	-	126 549	-