

Mark 630 Series

High Pressure Regulators

The Jordan Mark 630 is a spring loaded, direct operated pressure reducing regulator, designed to provide tight shutoff and accurate regulation on high pressure gas systems. It can be used on air and a variety of gases. It is designed to handle inlet pressures up to 1500 psi.



TABLE 1: MAX INLET PRESSURES AND PRESSURE DROPS

| Orifice Diameter | 1/8" + 3/16" | 1/4" | 3/8" | 1/2" |
|---------------------------------------------------|--------------|------|------|------|
| Max Allowable Inlet Pressure, psig ⁽¹⁾ | 1500 | 1500 | 1000 | 750 |
| Max Allowable Pressure Drop, psid | 1500 | 1000 | 500 | 250 |

1. The sum of the outlet pressure setting and the maximum allowable pressure drop determines the maximum allowable inlet pressure for a given installation. For example, with a 3/8" seat ring orifice (maximum pressure drop of 500 psi) and a 275 psig outlet pressure setting, the maximum inlet pressure is 775 psig (500 psi + 275 psig).

TABLE 2: OUTLET PRESSURE LIMITS FOR SPRING-LOADED MARK 630 REGULATORS

| Outlet Pressure Range | Low-Pressure Regulator | | | | High-Pressure Regulator | | | | | |
|----------------------------------------------------------------|------------------------|--------------|-----------------|-----------------------------|-------------------------|---------------|----------------|-----------------|-----------------|------------------|
| | 3 to 10 psig | 8 to 20 psig | 17 to 30 psig | 27 to 40 psig | 27 to 50 psig | 46 to 95 psig | 90 to 150 psig | 150 to 200 psig | 200 to 275 psig | 275 to 500 psig |
| Maximum Operating Outlet Pressure, PSIG | 10 | 20 | 30 | 40 | 50 | 95 | 150 | 200 | 275 | 500 |
| Max. Outlet Pressure Over Pressure Setting ¹ , PSIG | 20 | | 20 ² | Ltd. By Max. emr Outlet Pr. | 200 | | | | | 200 ³ |
| Max. Emergency Outlet (Casing) Pressure, PSIG | 45 | | | | 500 | | | | | |

1. Damage to internal parts of the regulator may occur if outlet pressure exceeds the actual pressure setting by amounts greater than shown in this row
2. For outlet pressure settings to 25 psig only. For pressure settings over 25 psig, outlet pressure is limited by max. emergency outlet pressure of 45 psig.
3. For outlet pressure settings to 350 psig only. For pressure settings over 350 psig, outlet pressure is limited by max. emergency outlet pressure of 550 psig.
4. Leakage or bursting of pressure-containing parts may occur if outlet pressure exceeds these values.

SPECIFICATIONS

Sizes: 1" (DN25) and 2" (DN50)

End Connections: FNPT standard (contact factory for other options)

Materials of Construction:

- **Body, Bonnet:** Cast Iron, Steel (1030 WCB)
- **Diaphragm:** Neoprene, Fluorocarbon
- **Seat:** Nylon, TFE, Nitrile
- **Orifice:** 316 Stainless Steel

Orifice Sizes (Interchangeable):

1/8" (3mm), 3/16" (5mm), 1/4" (6mm),
3/8" (10mm), 1/2" (13mm)

Reduced Pressure Control Ranges:

Low Pressure

3 - 10 psig (0,2 - 0,7 bar)

8 - 20 psig (0,6 - 1,4 bar)

17 - 30 psig (1,2 - 2,1 bar)

27 - 40 psig (1,9 - 2,8 bar)

Regular

27 - 50 psig (1,9 - 3,5 bar)

45 - 95 psig (3,2 - 6,6 bar)

90 - 150 psig (6,2 - 10,3 bar)

150 - 200 psig (10,3 - 13,8 bar)

200 - 275 psig (13,8 - 18,9 bar)

275 - 500 psig (18,9 - 34,5 bar)

Service: Air or gas

Temperature Range: -20°F to 150°F (-29°C to 66°C)

Maximum Inlet Body Pressure: 1500 psi (103,4 bar)

WIDE OPEN FLOW COEFFICIENT FOR RELIEF VALVE SIZING

| Orifice Size (Inches) | Cv | Kv |
|-----------------------|------|------|
| 1/8" | 0.48 | 0,41 |
| 3/16" | 1.11 | 0,95 |
| 1/4" | 2.04 | 1,75 |
| 3/8" | 4.60 | 3,96 |
| 1/2" | 8.20 | 7,05 |

MAXIMUM SUPPLY PRESSURE

| Orifice Sizes | | Maximum Allowable Inlet Pressure ¹ | | Maximum Pressure Differential | | | |
|---------------|-------------|-----------------------------------------------|------|-------------------------------|------|--------------|------|
| | | | | Nylon and CTFE Disk | | Nitrile Disk | |
| Inches | mm | PSIG | BAR | PSIG | BAR | PSIG | BAR |
| 1/8 and 3/16 | 3.2 and 4.8 | 1500 | 103 | 1500 | 103 | 600 | 41.4 |
| 1/4 | 6.4 | | | 1000 | 69 | | |
| 3/8 | 9.5 | 1000 | 69 | 500 | 34.5 | 500 | 34.5 |
| 1/2 | 13 | 750 | 51.7 | 250 | 17.2 | 250 | 17.2 |

1. The Inlet Pressure not exceed the sum of the set output pressure and the maximum pressure differential.
2. Although Nitrile disks can be used with Maximum Allowable Pressure Drops listed in the Table above, it is recommended that the drops across the Nitrile disks be limited to 200 PSIG (13.8 BAR) for optimal disk life. It is recommended to use nylon disks for larger pressure drops.

MARK 630 HIGH PRESSURE REGULATOR

MARK 630 FLOW CAPACITIES IN SCFH OF 0.6 S.G. NATURAL GAS AT 20% DROOP

| Outlet Pressure Range | Outlet Pressure Setting | | Inlet Pressure | | 1" Body Size | | | | | 2" Body Size | | | | |
|------------------------------------|-------------------------|--------|----------------|--------|-----------------------|--------|--------|--------|--------|-----------------------|--------|--------|--------|--------|
| | PSIG | BAR | PSIG | BAR | Port Diameter, inches | | | | | Port Diameter, inches | | | | |
| | | | | | 1/8 | 3/16 | 1/4 | 3/8 | 1/2 | 1/8 | 3/16 | 1/4 | 3/8 | 1/2 |
| 3 to 10 PSIG (0.21 to 0.69 BAR) | 5 | 0.34 | 10 | 0.69 | 200 | 510 | 990 | 1700 | 2200 | 290 | 830 | 1300 | 3300 | 5900 |
| | | | 20 | 1.4 | 400 | 770 | 1200 | 2000 | 2700 | 500 | 1200 | 2100 | 4800 | 9100 |
| | | | 30 | 2.1 | 600 | 1100 | 1500 | 2200 | 3300 | 760 | 1600 | 2700 | 7000 | 11,000 |
| | | | 50 | 3.5 | 950 | 1500 | 2100 | 2800 | 4200 | 1100 | 2200 | 3900 | 9800 | 17,000 |
| | | | 60 | 4.1 | 1100 | 1750 | 2400 | 3000 | 4100 | 1250 | 2700 | 4500 | 11,100 | 19,500 |
| | | | 75 | 5.2 | 1300 | 2100 | 2700 | 3400 | 4400 | 1500 | 3300 | 5400 | 13,000 | 23,000 |
| | | | 100 | 6.9 | 1700 | 2400 | 2900 | 4000 | 4900 | 1900 | 4300 | 7000 | 17,000 | 30,000 |
| | | | 150 | 10.3 | 2200 | 3000 | 3500 | 4600 | 5800 | 2800 | 6200 | 10,000 | 25,000 | 43,000 |
| | | | 200 | 13.8 | 3000 | 3400 | 4200 | 5100 | 6100 | 3700 | 8200 | 13,000 | 32,000 | 57,000 |
| | | | 250 | 17.2 | 3500 | 3800 | 4300 | 5900 | 6800 | 4500 | 10,200 | 17,000 | 38,000 | 70,000 |
| | 400 | 27.5 | 3700 | 3900 | 4500 | 6400 | | 7200 | 16,000 | 28,000 | 64,000 | | | |
| | 500 | 34.5 | 4100 | 4300 | 4700 | 7400 | | 9100 | 19,000 | 35,000 | 79,000 | | | |
| | 600 | 41.4 | 4300 | 4600 | 5000 | | | 10,000 | 24,000 | 42,000 | | | | |
| | 1000 | 69 | 4600 | 4900 | 5600 | | | 18,000 | 39,000 | 69,000 | | | | |
| | 1500 | 103 | 5000 | 5400 | | | | 22,000 | 60,000 | | | | | |
| | 10 | 0.69 | 20 | 1.4 | 500 | 1200 | 1800 | 4200 | 4900 | 560 | 1300 | 2200 | 5100 | 9000 |
| | | | 30 | 2.1 | 700 | 1400 | 2800 | 4100 | 5300 | 770 | 1500 | 3000 | 7000 | 11,000 |
| | | | 50 | 3.5 | 1000 | 2300 | 4100 | 5100 | 6200 | 1100 | 2400 | 4300 | 9800 | 17,000 |
| | | | 60 | 4.1 | 1150 | 2700 | 4200 | 5500 | 6500 | 1250 | 2800 | 5000 | 11,100 | 19,500 |
| | | | 75 | 5.2 | 1400 | 3200 | 4400 | 6000 | 6800 | 1500 | 3400 | 5900 | 13,000 | 23,000 |
| 100 | | | 6.9 | 1600 | 3800 | 5000 | 6400 | 7300 | 1900 | 4400 | 7600 | 17,000 | 30,000 | |
| 150 | | | 10.3 | 2400 | 4800 | 6200 | 7300 | 7900 | 2800 | 6200 | 11,000 | 25,000 | 43,000 | |
| 200 | | | 13.8 | 3300 | 5800 | 6900 | 7700 | 8200 | 3700 | 8100 | 14,000 | 33,000 | 57,000 | |
| 250 | | | 17.2 | 4000 | 5900 | 7300 | 8600 | 8700 | 4400 | 10,000 | 17,000 | 41,000 | 70,000 | |
| 400 | | | 27.6 | 5400 | 6900 | 7600 | 9000 | | 7200 | 16,000 | 28,000 | 62,000 | | |
| 500 | 34.5 | 6000 | 7100 | 7900 | 9700 | | 8900 | 19,000 | 35,000 | 76,000 | | | | |
| 600 | 41.4 | 6500 | 7300 | 8200 | | | 10,000 | 23,000 | 42,000 | | | | | |
| 1000 | 69 | 7200 | 7700 | 8400 | | | 18,000 | 40,000 | 72,000 | | | | | |
| 1500 | 103 | 7400 | 8400 | | | | 27,000 | 60,000 | | | | | | |
| 8 to 20 PSIG (0.55 to 1.4 BAR) | 10 | 0.69 | 20 | 1.4 | 500 | 700 | 1400 | 2200 | 3600 | 550 | 1200 | 1700 | 2500 | 4900 |
| | | | 30 | 2.1 | 700 | 1300 | 2100 | 3100 | 4300 | 760 | 1500 | 2500 | 4600 | 8800 |
| | | | 50 | 3.5 | 900 | 1900 | 3200 | 4300 | 5400 | 1000 | 2300 | 3800 | 7800 | 16,000 |
| | | | 60 | 4.1 | 1050 | 2300 | 3500 | 4700 | 5800 | 1200 | 2700 | 4500 | 9900 | 18,500 |
| | | | 75 | 5.2 | 1300 | 2800 | 4000 | 5200 | 6400 | 1500 | 3300 | 5600 | 13,000 | 23,000 |
| | | | 100 | 6.9 | 1600 | 3500 | 4600 | 5700 | 6900 | 1900 | 4300 | 7400 | 17,000 | 30,000 |
| | | | 150 | 10.3 | 2400 | 4400 | 5700 | 6800 | 7800 | 2800 | 6100 | 11,000 | 25,000 | 44,000 |
| | | | 200 | 13.8 | 3300 | 4800 | 6200 | 7500 | 8200 | 3600 | 8000 | 14,000 | 32,000 | 57,000 |
| | | | 250 | 17.2 | 4000 | 5800 | 7000 | 8000 | 8700 | 4400 | 9500 | 17,000 | 37,000 | 70,000 |
| | | | 400 | 27.6 | 5400 | 6500 | 7600 | 8900 | | 7200 | 15,000 | 28,000 | 60,000 | |
| | 500 | 34.5 | 6000 | 6900 | 7900 | 9400 | | 8800 | 19,000 | 35,000 | 74,000 | | | |
| | 600 | 41.4 | 6500 | 7000 | 8200 | | | 10,000 | 23,000 | 42,000 | | | | |
| | 1000 | 69 | 7200 | 7700 | 8400 | | | 18,000 | 39,000 | 72,000 | | | | |
| | 1500 | 103 | 7400 | 8100 | | | | 27,000 | 60,000 | | | | | |
| | 15 | 1.0 | 20 | 1.4 | 470 | 1000 | 1700 | 3300 | 4900 | 520 | 1100 | 1800 | 3500 | 5700 |
| | | | 30 | 2.1 | 600 | 1500 | 2500 | 4600 | 5200 | 740 | 1600 | 2800 | 5900 | 10,000 |
| | | | 50 | 3.5 | 1000 | 2300 | 3800 | 5500 | 5700 | 1100 | 2400 | 4300 | 9800 | 16,000 |
| | | | 60 | 4.1 | 1150 | 2700 | 4300 | 6100 | 6800 | 1250 | 2800 | 5000 | 11,100 | 18,500 |
| | | | 75 | 5.2 | 1400 | 3300 | 5100 | 7000 | 8500 | 1500 | 3400 | 6000 | 13,000 | 23,000 |
| | | | 100 | 6.9 | 1900 | 4300 | 6200 | 7600 | 9600 | 1900 | 4400 | 7800 | 17,000 | 30,000 |
| 150 | | | 10.3 | 2700 | 6100 | 7400 | 8000 | 9900 | 2800 | 6400 | 11,000 | 25,000 | 43,000 | |
| 200 | | | 13.8 | 3600 | 7500 | 8500 | 9600 | 10,000 | 3700 | 8300 | 14,000 | 31,000 | 57,000 | |
| 250 | | | 17.2 | 4700 | 8400 | 9100 | 10,000 | 11,000 | 4800 | 10,000 | 19,000 | 39,000 | 74,000 | |
| 400 | | | 27.6 | 7100 | 8700 | 10,000 | 11,000 | | 7200 | 16,000 | 29,000 | 64,000 | | |
| 500 | 34.5 | 8300 | 8800 | 10,500 | 12,000 | | 9200 | 20,000 | 37,000 | 82,000 | | | | |
| 600 | 41.4 | 8600 | 9600 | 10,800 | | | 11,000 | 23,000 | 42,000 | | | | | |
| 1000 | 69 | 9600 | 10,000 | 11,000 | | | 18,000 | 40,000 | 71,000 | | | | | |
| 1500 | 103 | 10,000 | 11,000 | | | | 27,000 | 60,000 | | | | | | |
| 20 | 1.4 | 30 | 2.4 | 600 | 1500 | 2500 | 4600 | 6800 | 700 | 1600 | 2600 | 5200 | 9200 | |
| | | 40 | 2.8 | 800 | 2000 | 3400 | 5700 | 8100 | 900 | 2100 | 3500 | 7500 | 12,000 | |
| | | 50 | 3.5 | 1000 | 2300 | 4200 | 6800 | 9000 | 1100 | 2400 | 4300 | 9400 | 15,000 | |
| | | 60 | 4.1 | 1150 | 2700 | 4900 | 7500 | 9800 | 1250 | 2800 | 5100 | 11,000 | 18,000 | |
| | | 75 | 5.2 | 1400 | 3300 | 5900 | 8500 | 10,000 | 1500 | 3400 | 6100 | 13,000 | 23,000 | |
| | | 100 | 6.9 | 1800 | 4100 | 7400 | 9500 | 11,000 | 1900 | 4300 | 7800 | 17,000 | 29,000 | |
| | | 150 | 10.3 | 2700 | 6100 | 9200 | 11,000 | 12,000 | 2800 | 6300 | 11,000 | 23,000 | 42,000 | |
| | | 200 | 13.8 | 3600 | 8000 | 10,000 | 12,000 | 13,000 | 3700 | 8200 | 14,000 | 32,000 | 59,000 | |
| | | 270 | 18.6 | 4500 | 9800 | 11,000 | 13,000 | 14,000 | 4900 | 10,000 | 19,000 | 39,000 | 75,000 | |
| | | 400 | 27.6 | 7200 | 10,000 | 13,000 | 14,000 | | 7300 | 16,000 | 28,000 | 63,000 | | |
| 520 | 35.0 | 8800 | 11,000 | 13,500 | 15,000 | | 9500 | 20,000 | 37,000 | 82,000 | | | | |
| 600 | 41.4 | 10,000 | 12,000 | 13,800 | | | 11,000 | 24,000 | 43,000 | | | | | |
| 1020 | 70.3 | 11,000 | 12,300 | 15,000 | | | 18,000 | 40,000 | 73,000 | | | | | |
| 1500 | 103 | 12,000 | 13,000 | | | | 27,000 | 60,000 | | | | | | |

MARK 630 HIGH PRESSURE REGULATOR

MARK 630 FLOW CAPACITIES IN SCFH OF 0.6 S.G. NATURAL GAS AT 20% DROOP

| Outlet Pressure Range | Outlet Pressure Setting | | Inlet Pressure | | 1" Body Size | | | | | 2" Body Size | | | | | | |
|---------------------------------|-------------------------|--------|----------------|--------|-----------------------|--------|--------|--------|--------|-----------------------|--------|--------|--------|--------|--------|--------|
| | PSIG | BAR | | | Port Diameter, inches | | | | | Port Diameter, inches | | | | | | |
| | | | PSIG | BAR | 1/8 | 3/16 | 1/4 | 3/8 | 1/2 | 1/8 | 3/16 | 1/4 | 3/8 | 1/2 | | |
| 17 to 30 PSIG (1.17 to 2.1 BAR) | 20 | 1.4 | 30 | 2.4 | 590 | 900 | 1700 | 3300 | 4700 | 680 | 1300 | 2100 | 3500 | 6000 | | |
| | | | 40 | 2.8 | 790 | 1700 | 2400 | 4000 | 6100 | 890 | 1800 | 2800 | 5100 | 8200 | | |
| | | | 50 | 3.5 | 900 | 2200 | 3600 | 4900 | 6900 | 1000 | 2300 | 3700 | 6200 | 10,000 | | |
| | | | 60 | 4.1 | 1050 | 2500 | 4000 | 5500 | 7400 | 1200 | 2700 | 4300 | 7400 | 12,500 | | |
| | | | 75 | 5.2 | 1300 | 3000 | 4500 | 6400 | 8100 | 1500 | 3300 | 5300 | 9200 | 16,000 | | |
| | | | 100 | 6.9 | 1700 | 4000 | 5500 | 7600 | 9700 | 1900 | 4200 | 6900 | 12,000 | 24,000 | | |
| | | | 150 | 10.3 | 2100 | 5500 | 7000 | 9600 | 11,000 | 2200 | 6100 | 10,000 | 21,000 | 40,000 | | |
| | | | 200 | 13.8 | 3400 | 6400 | 9100 | 11,000 | 12,000 | 3500 | 8000 | 13,000 | 32,000 | 56,000 | | |
| | | | 270 | 18.6 | 4400 | 8400 | 10,000 | 12,000 | 13,000 | 4800 | 10,000 | 19,000 | 39,000 | 75,000 | | |
| | | | 400 | 27.6 | 7000 | 8700 | 11,000 | 13,000 | | 7100 | 15,000 | 28,000 | 63,000 | | | |
| | 520 | 35.9 | 8200 | 10,000 | 12,000 | 13,800 | | 9300 | 20,000 | 37,000 | 82,000 | | | | | |
| | 600 | 41.4 | 9600 | 11,000 | 13,000 | | | 10,000 | 24,000 | 42,000 | | | | | | |
| | 1020 | 70.3 | 10,000 | 12,000 | 14,000 | | | 18,000 | 40,000 | 72,000 | | | | | | |
| | 1500 | 103 | 12,000 | 13,000 | | | | 27,000 | 60,000 | | | | | | | |
| | 30 | 2.1 | 40 | 2.8 | 820 | 1700 | 2700 | 5100 | 7600 | 860 | 1800 | 2900 | 5300 | 8500 | | |
| | | | 50 | 3.5 | 900 | 2200 | 3600 | 6400 | 6700 | 1000 | 2300 | 3800 | 7300 | 11,000 | | |
| | | | 60 | 4.1 | 1100 | 2600 | 4400 | 7500 | 9800 | 1200 | 2700 | 4700 | 8900 | 14,000 | | |
| | | | 75 | 5.2 | 1400 | 3300 | 5400 | 8800 | 11,000 | 1500 | 3400 | 5800 | 11,000 | 18,000 | | |
| | | | 100 | 6.9 | 1700 | 4100 | 6800 | 10,000 | 12,000 | 1800 | 4200 | 7800 | 16,000 | 28,000 | | |
| | | | 150 | 10.3 | 2600 | 6000 | 9100 | 13,000 | 14,000 | 2700 | 6100 | 11,000 | 20,000 | 44,000 | | |
| 200 | | | 13.8 | 3500 | 8000 | 11,000 | 14,000 | 16,000 | 3600 | 8100 | 14,000 | 24,000 | 58,000 | | | |
| 280 | | | 19.3 | 4900 | 10,500 | 13,000 | 15,000 | 17,000 | 5000 | 11,000 | 20,000 | 46,000 | 80,000 | | | |
| 400 | | | 27.6 | 6900 | 13,000 | 15,000 | 17,000 | | 7000 | 16,000 | 28,000 | 64,000 | | | | |
| 530 | | | 36.5 | 9400 | 14,500 | 15,800 | 19,000 | | 9500 | 20,000 | 37,000 | 86,000 | | | | |
| 600 | 41.4 | 9700 | 15,000 | 16,000 | | | 10,000 | 23,000 | 42,000 | | | | | | | |
| 1030 | 71.0 | 16,000 | 18,000 | 18,000 | | | 19,000 | 41,000 | 73,000 | | | | | | | |
| 1500 | 103 | 16,400 | 18,500 | | | | 27,000 | 61,000 | | | | | | | | |
| 27 to 40 PSIG (1.86 to 2.8 BAR) | 30 | 2.1 | 40 | 2.8 | 800 | 1500 | 2400 | 4400 | 6400 | 850 | 1600 | 2600 | 4500 | 7200 | | |
| | | | 50 | 3.5 | 900 | 2000 | 3200 | 5600 | 7700 | 1000 | 2200 | 3500 | 5900 | 9700 | | |
| | | | 60 | 4.1 | 1100 | 2500 | 3900 | 6300 | 8900 | 1200 | 2600 | 4200 | 7300 | 12,000 | | |
| | | | 75 | 5.2 | 1400 | 3000 | 4700 | 7700 | 10,000 | 1500 | 3200 | 5300 | 9400 | 15,000 | | |
| | | | 100 | 6.9 | 1700 | 3900 | 6400 | 9400 | 11,000 | 1800 | 4200 | 6900 | 12,000 | 23,000 | | |
| | | | 150 | 10.3 | 2600 | 5700 | 8800 | 12,000 | 14,000 | 2700 | 6100 | 10,000 | 20,000 | 39,000 | | |
| | | | 200 | 13.8 | 3500 | 7000 | 9400 | 14,000 | 15,000 | 3600 | 8100 | 13,000 | 24,000 | 57,000 | | |
| | | | 280 | 19.3 | 4900 | 10,000 | 13,000 | 15,000 | 16,000 | 5000 | 11,000 | 19,000 | 45,000 | 78,000 | | |
| | | | 400 | 27.6 | 6900 | 12,000 | 15,000 | 17,000 | | 7000 | 15,000 | 28,000 | 64,000 | | | |
| | | | 530 | 36.5 | 9400 | 12,600 | 15,800 | 18,000 | | 9500 | 20,000 | 37,000 | 85,000 | | | |
| | | | 600 | 41.4 | 9700 | 13,400 | 16,000 | | | 10,000 | 23,000 | 42,000 | | | | |
| | | | 1030 | 71.0 | 16,000 | 16,000 | 18,000 | | | 19,000 | 41,000 | 73,000 | | | | |
| | | | 1500 | 103 | 16,400 | 18,000 | | | | 27,000 | 61,000 | | | | | |
| | | | 40 | 2.8 | 50 | 3.5 | 950 | 1800 | 3200 | 5500 | 8900 | 1000 | 2100 | 3400 | 5900 | 9900 |
| | | | | | 60 | 4.1 | 1100 | 2300 | 4100 | 7600 | 10,000 | 1200 | 2600 | 4300 | 7900 | 12,000 |
| 75 | 5.2 | 1400 | | | 3000 | 5300 | 9300 | 12,000 | 1500 | 3400 | 5600 | 10,000 | 16,000 | | | |
| 100 | 6.9 | 1800 | | | 4100 | 7000 | 11,000 | 14,000 | 1900 | 4300 | 7200 | 13,000 | 24,000 | | | |
| 150 | 10.3 | 2700 | | | 6000 | 9500 | 14,000 | 17,000 | 2800 | 6200 | 10,000 | 22,000 | 39,000 | | | |
| 200 | 13.8 | 3500 | | | 7800 | 12,000 | 17,000 | 19,000 | 3600 | 8200 | 14,000 | 30,000 | 56,000 | | | |
| 290 | 20.0 | 5100 | | | 10,000 | 15,000 | 19,000 | 21,000 | 5200 | 11,000 | 20,000 | 46,000 | 81,000 | | | |
| 400 | 27.6 | 7100 | | | 15,000 | 18,000 | 21,000 | | 7200 | 16,000 | 28,000 | 63,000 | | | | |
| 540 | 37.2 | 9500 | | | 17,000 | 19,000 | 22,000 | | 9600 | 21,000 | 38,000 | 86,000 | | | | |
| 600 | 41.4 | 9800 | | | 18,000 | 21,000 | | | 10,000 | 23,000 | 42,000 | | | | | |
| 1040 | 71.7 | 17,500 | | | 20,000 | 23,000 | | | 18,000 | 41,000 | 73,000 | | | | | |
| 1500 | 103 | 20,000 | | | 22,000 | | | | 27,000 | 61,000 | | | | | | |
| 27 to 50 PSIG (1.86 to 3.4 BAR) | 50 | 3.4 | | | 60 | 4.1 | 900 | 2000 | 3100 | 5200 | 8100 | 1000 | 2100 | 3200 | 5300 | 12,000 |
| | | | | | 75 | 5.2 | 1300 | 2800 | 3800 | 7200 | 10,000 | 1400 | 2900 | 3900 | 7300 | 16,000 |
| | | | | | 100 | 6.9 | 1700 | 3500 | 5700 | 10,500 | 13,000 | 1800 | 3600 | 5800 | 10,000 | 21,000 |
| | | | 150 | 10.3 | 2600 | 5700 | 8700 | 13,000 | 17,000 | 2700 | 5800 | 9000 | 15,000 | 36,000 | | |
| | | | 200 | 13.8 | 3500 | 7800 | 11,000 | 16,000 | 19,000 | 3600 | 7900 | 12,000 | 21,000 | 55,000 | | |
| | | | 300 | 20.7 | 5300 | 10,500 | 14,000 | 20,000 | 23,000 | 5500 | 11,000 | 19,000 | 48,000 | 83,000 | | |
| | | | 400 | 27.6 | 6900 | 13,000 | 17,000 | 23,000 | | 7000 | 15,000 | 27,000 | 63,000 | | | |
| | | | 550 | 19.3 | 9600 | 16,000 | 20,000 | 26,000 | | 9700 | 21,000 | 38,000 | 88,000 | | | |
| | | | 600 | 41.4 | 9800 | 17,000 | 21,000 | | | 10,000 | 23,000 | 42,000 | | | | |
| | | | 1050 | 72.4 | 17,000 | 23,000 | 27,000 | | | 19,000 | 42,000 | 74,000 | | | | |
| 1500 | 103 | 19,000 | 25,000 | | | | 27,000 | 60,000 | | | | | | | | |
| 46 to 95 PSIG (3.2 to 6.5 BAR) | 50 | 3.4 | 60 | 4.1 | 800 | 1500 | 2400 | 4300 | 6400 | 900 | 1600 | 2500 | 4400 | 7300 | | |
| | | | 75 | 5.2 | 1200 | 2100 | 3100 | 5500 | 8000 | 1300 | 2200 | 3200 | 6100 | 9300 | | |
| | | | 100 | 6.9 | 1500 | 3100 | 4200 | 7500 | 10,000 | 1600 | 3400 | 4300 | 7600 | 12,000 | | |
| | | | 150 | 10.3 | 2400 | 4500 | 6700 | 11,000 | 14,000 | 2500 | 4600 | 7100 | 12,000 | 19,000 | | |
| | | | 200 | 13.8 | 3400 | 6600 | 9400 | 14,000 | 17,000 | 3500 | 6700 | 9600 | 16,000 | 27,000 | | |
| | | | 300 | 20.7 | 5200 | 8900 | 11,000 | 16,000 | 20,000 | 5300 | 10,000 | 14,000 | 27,000 | 51,000 | | |
| | | | 400 | 27.6 | 6800 | 11,000 | 15,000 | 20,000 | | 6900 | 13,000 | 21,000 | 46,000 | | | |
| | | | 550 | 19.3 | 9500 | 13,000 | 17,000 | 23,000 | | 9600 | 18,000 | 29,000 | 87,000 | | | |
| | | | 600 | 41.4 | 9800 | 14,000 | 19,000 | | | 10,000 | 20,000 | 35,000 | | | | |
| | | | 1050 | 72.4 | 14,000 | 19,000 | 22,000 | | | 18,000 | 41,000 | 73,000 | | | | |
| 1500 | 103 | 18,000 | 24,000 | | | | 26,000 | 59,000 | | | | | | | | |

MARK 630 HIGH PRESSURE REGULATOR

MARK 630 FLOW CAPACITIES IN SCFH OF 0.6 S.G. NATURAL GAS AT 20% DROOP

| Outlet Pressure Range | Outlet Pressure Setting | | Inlet Pressure | | 1" Body Size | | | | | 2" Body Size | | | | | | | |
|---------------------------------------|-------------------------|--------|---------------------------------------|------|-----------------------|--------|--------|--------|--------|-----------------------|--------|--------|---------|---------|--------|--------|--------|
| | PSIG | BAR | PSIG | BAR | Port Diameter, inches | | | | | Port Diameter, inches | | | | | | | |
| | | | | | 1/8 | 3/16 | 1/4 | 3/8 | 1/2 | 1/8 | 3/16 | 1/4 | 3/8 | 1/2 | | | |
| 46 to 95 PSIG (3.2 to 6.5 BAR) | 75 | 5.2 | 100 | 6.9 | 1700 | 3200 | 5000 | 8000 | 13,000 | 1800 | 3300 | 5200 | 9000 | 14,000 | | | |
| | | | 125 | 8.6 | 2200 | 4300 | 6700 | 10,000 | 15,000 | 2300 | 4400 | 6900 | 11,000 | 18,000 | | | |
| | | | 200 | 5.2 | 3500 | 7300 | 10,000 | 16,000 | 22,000 | 3600 | 7400 | 11,000 | 19,000 | 30,000 | | | |
| | | | 250 | 17.2 | 4400 | 9400 | 13,000 | 19,000 | 24,000 | 4500 | 9500 | 14,000 | 26,000 | 44,000 | | | |
| | | | 325 | 22.4 | 5700 | 11,000 | 16,000 | 23,000 | 27,000 | 5800 | 12,000 | 18,000 | 36,000 | 67,000 | | | |
| | | | 400 | 27.6 | 7100 | 14,000 | 19,000 | 27,000 | | 7200 | 15,000 | 24,000 | 47,000 | | | | |
| | | | 575 | 39.6 | 9700 | 18,000 | 23,000 | 30,000 | | 9800 | 22,000 | 37,000 | 92,000 | | | | |
| | | | 600 | 41.4 | 9900 | 19,000 | 25,000 | | | 10,000 | 23,000 | 39,000 | | | | | |
| | | | 1075 | 74.1 | 18,000 | 27,000 | 32,000 | | | 19,000 | 42,000 | 75,000 | | | | | |
| | | | 1500 | 103 | 23,000 | 32,000 | | | | 24,000 | 60,000 | | | | | | |
| 90 to 150 PSIG (6.2 to 10.3 BAR) | 100 | 6.9 | 125 | 8.6 | 2000 | 3600 | 5500 | 9200 | 13,000 | 2100 | 3700 | 5600 | 9800 | 15,000 | | | |
| | | | 150 | 10.3 | 2500 | 4600 | 6800 | 11,000 | 16,000 | 2600 | 4900 | 7400 | 12,000 | 18,000 | | | |
| | | | 200 | 5.2 | 3600 | 6600 | 9400 | 13,000 | 22,000 | 3700 | 6900 | 10,000 | 17,000 | 27,000 | | | |
| | | | 250 | 17.2 | 4400 | 8500 | 11,000 | 18,000 | 26,000 | 4500 | 8700 | 13,000 | 22,000 | 34,000 | | | |
| | | | 300 | 20.7 | 5300 | 9800 | 14,000 | 21,000 | 30,000 | 5400 | 10,000 | 16,000 | 27,000 | 44,000 | | | |
| | | | 350 | 24.1 | 6100 | 10,000 | 16,000 | 25,000 | 32,000 | 6300 | 12,000 | 19,000 | 33,000 | 57,000 | | | |
| | | | 400 | 27.6 | 7000 | 13,000 | 18,000 | 27,000 | | 7200 | 14,000 | 21,000 | 39,000 | | | | |
| | | | 600 | 41.4 | 9500 | 18,000 | 23,000 | 35,000 | | 10,000 | 21,000 | 34,000 | 69,000 | | | | |
| | | | 1100 | 75.8 | 19,500 | 28,000 | 35,000 | | | 19,000 | 43,000 | 74,000 | | | | | |
| | | | 1500 | 103 | 25,000 | 35,000 | | | | 27,000 | 59,000 | | | | | | |
| 90 to 150 PSIG (6.2 to 10.3 BAR) | 125 | 8.6 | 150 | 10.3 | 2400 | 4600 | 6700 | 11,000 | 17,000 | 2500 | 5000 | 8100 | 12,000 | 20,000 | | | |
| | | | 200 | 5.2 | 3500 | 6800 | 10,000 | 15,000 | 23,000 | 3600 | 7400 | 11,000 | 19,000 | 30,000 | | | |
| | | | 250 | 17.2 | 4300 | 8900 | 12,000 | 19,000 | 29,000 | 4400 | 9400 | 14,000 | 24,000 | 39,000 | | | |
| | | | 300 | 20.7 | 5200 | 10,000 | 15,000 | 25,000 | 34,000 | 5300 | 11,000 | 17,000 | 31,000 | 48,000 | | | |
| | | | 375 | 25.9 | 6600 | 13,000 | 18,500 | 28,000 | 39,000 | 7000 | 15,000 | 24,000 | 43,000 | 65,000 | | | |
| | | | 400 | 27.6 | 7300 | 14,500 | 19,000 | 29,000 | | 8300 | 18,000 | 28,000 | 56,000 | | | | |
| | | | 500 | 34.5 | 7900 | 15,000 | 25,000 | 36,000 | | 8800 | 19,000 | 30,000 | 59,000 | | | | |
| | | | 625 | 43.1 | 10,000 | 22,000 | 29,000 | 41,000 | | 11,000 | 24,000 | 40,000 | 79,000 | | | | |
| | | | 1125 | 77.6 | 18,000 | 33,000 | 42,000 | | | 19,000 | 44,000 | 79,000 | | | | | |
| | | | 1500 | 103 | 26,000 | 43,000 | | | | 27,000 | 60,000 | | | | | | |
| 90 to 150 PSIG (6.2 to 10.3 BAR) | 150 | 10.3 | 200 | 13.8 | 3400 | 6800 | 10,000 | 16,000 | 26,000 | 3500 | 7300 | 11,000 | 18,000 | 30,000 | | | |
| | | | 250 | 17.2 | 4400 | 8800 | 13,000 | 20,000 | 32,000 | 4500 | 9500 | 15,000 | 26,000 | 38,000 | | | |
| | | | 300 | 20.7 | 5300 | 10,000 | 15,000 | 24,000 | 35,000 | 5400 | 11,000 | 19,000 | 32,000 | 52,000 | | | |
| | | | 400 | 27.6 | 7100 | 14,000 | 22,000 | 34,000 | 42,000 | 7200 | 15,000 | 26,000 | 46,000 | 77,000 | | | |
| | | | 450 | 31.0 | 7700 | 17,000 | 24,000 | 36,000 | | 8100 | 18,000 | 29,000 | 54,000 | | | | |
| | | | 650 | 44.8 | 9000 | 24,000 | 33,000 | 49,000 | | 10,000 | 25,000 | 44,000 | 88,000 | | | | |
| | | | 800 | 55.2 | 13,000 | 29,000 | 38,000 | | | 14,000 | 30,000 | 54,000 | | | | | |
| | | | 1150 | 79.2 | 20,000 | 38,000 | 49,000 | | | 21,000 | 46,000 | 78,000 | | | | | |
| | | | 1500 | 103 | 26,000 | 47,000 | | | | 27,000 | 60,000 | | | | | | |
| | | | 150 to 200 PSIG (10.3 to 13.8 BAR) | 150 | 10.3 | 200 | 13.8 | 3400 | 6200 | 9300 | 16,000 | 24,000 | 3500 | 6900 | 10,000 | 17,000 | 28,000 |
| 250 | 17.2 | 4300 | | | | 8800 | 12,000 | 20,000 | 27,000 | 4400 | 9000 | 13,000 | 23,000 | 36,000 | | | |
| 300 | 20.7 | 5300 | | | | 10,000 | 15,000 | 24,000 | 30,000 | 5400 | 11,000 | 17,000 | 28,000 | 47,000 | | | |
| 400 | 27.6 | 7100 | | | | 14,000 | 21,000 | 32,000 | 38,000 | 7200 | 15,000 | 24,000 | 40,000 | 66,000 | | | |
| 450 | 31.0 | 7600 | | | | 15,000 | 24,000 | 36,000 | | 8000 | 17,000 | 27,000 | 46,000 | | | | |
| 650 | 44.8 | 9000 | | | | 21,000 | 33,000 | 48,000 | | 10,000 | 22,000 | 40,000 | 74,000 | | | | |
| 800 | 55.2 | 13,000 | | | | 27,000 | 37,000 | | | 14,000 | 30,000 | 51,000 | | | | | |
| 1150 | 79.3 | 19,500 | | | | 34,000 | 49,000 | | | 20,000 | 45,000 | 78,000 | | | | | |
| 1500 | 103 | 26,000 | | | | 44,000 | | | | 27,000 | 60,000 | | | | | | |
| 150 to 200 PSIG (10.3 to 13.8 BAR) | 200 | 13.8 | | | | 250 | 17.2 | 4200 | 8300 | 12,000 | 20,000 | 30,000 | 4300 | 9100 | 13,000 | 23,000 | 42,000 |
| | | | 300 | 20.7 | 5200 | 10,000 | 16,000 | 25,000 | 35,000 | 5300 | 11,000 | 18,000 | 33,000 | 52,000 | | | |
| | | | 450 | 31.0 | 7800 | 16,000 | 26,000 | 43,000 | 50,000 | 7900 | 17,000 | 29,000 | 52,000 | 84,000 | | | |
| | | | 600 | 41.1 | 9500 | 22,000 | 34,000 | 55,000 | | 10,000 | 23,000 | 40,000 | 75,000 | | | | |
| | | | 700 | 48.3 | 11,000 | 25,000 | 40,000 | 61,000 | | 12,000 | 27,000 | 47,000 | 90,000 | | | | |
| | | | 800 | 55.2 | 13,000 | 30,000 | 43,000 | | | 14,000 | 31,000 | 54,000 | | | | | |
| | | | 1000 | 68.9 | 16,000 | 37,000 | 50,000 | | | 17,000 | 39,000 | 69,000 | | | | | |
| | | | 1200 | 82.7 | 20,000 | 41,000 | 59,000 | | | 21,000 | 48,000 | 83,000 | | | | | |
| | | | 1500 | 103 | 26,000 | 53,000 | | | | 27,000 | 60,000 | | | | | | |
| | | | 200 to 275 PSIG (13.8 to 19 BAR) | 200 | 13.8 | 250 | 17.2 | 4200 | 8200 | 11,000 | 20,000 | 29,000 | 4300 | 8900 | 12,000 | 23,000 | 35,000 |
| 300 | 20.7 | 5200 | | | | 10,000 | 14,500 | 25,000 | 35,000 | 5300 | 11,000 | 18,000 | 31,000 | 46,000 | | | |
| 450 | 31.0 | 7700 | | | | 16,000 | 24,000 | 40,000 | 50,000 | 7800 | 17,000 | 28,000 | 50,000 | 78,000 | | | |
| 600 | 41.4 | 9500 | | | | 22,000 | 31,000 | 51,000 | | 10,000 | 23,000 | 38,000 | 70,000 | | | | |
| 700 | 48.3 | 11,000 | | | | 25,000 | 35,000 | 55,000 | | 12,000 | 27,000 | 45,000 | 83,000 | | | | |
| 800 | 55.2 | 13,000 | | | | 29,000 | 42,000 | | | 14,000 | 31,000 | 52,000 | | | | | |
| 1000 | 68.9 | 16,000 | | | | 63,000 | 50,000 | | | 17,000 | 39,000 | 68,000 | | | | | |
| 1200 | 82.7 | 19,000 | | | | 41,000 | 55,000 | | | 20,000 | 46,000 | 83,000 | | | | | |
| 1500 | 103 | 26,000 | | | | 51,000 | | | | 27,000 | 60,000 | | | | | | |
| 200 to 275 PSIG (13.8 to 19 BAR) | 250 | 17.2 | | | | 300 | 20.7 | 4900 | 9000 | 15,000 | 28,000 | 42,000 | 5000 | 10,000 | 17,000 | 30,000 | 52,000 |
| | | | 400 | 27.6 | 7000 | 14,000 | 23,000 | 40,000 | 56,000 | 7100 | 15,000 | 25,000 | 47,000 | 76,000 | | | |
| | | | 500 | 34.5 | 8500 | 18,000 | 29,000 | 51,000 | 65,000 | 8600 | 19,000 | 34,000 | 62,000 | 103,000 | | | |
| | | | 600 | 41.4 | 9500 | 22,000 | 34,000 | 59,000 | | 10,000 | 23,000 | 41,000 | 78,000 | | | | |
| | | | 750 | 51.7 | 12,500 | 28,000 | 44,000 | 69,000 | | 13,000 | 29,000 | 51,000 | 106,000 | | | | |
| | | | 1000 | 68.9 | 16,000 | 39,000 | 58,000 | | | 17,000 | 40,000 | 68,000 | | | | | |
| | | | 1200 | 82.7 | 21,000 | 49,000 | 69,000 | | | 22,000 | 50,000 | 87,000 | | | | | |
| | | | 1500 | 103 | 26,000 | 59,000 | | | | 27,000 | 60,000 | | | | | | |
| | | | 200 to 275 PSIG (13.8 to 19 BAR) | 275 | 19 | 300 | 20.7 | 4700 | 9000 | 15,000 | 28,000 | 39,000 | 4800 | 10,000 | 17,000 | 29,000 | 43,000 |
| | | | | | | 400 | 27.6 | 6900 | 14,000 | 25,000 | 40,000 | 54,000 | 7000 | 15,000 | 26,000 | 47,000 | 73,000 |
| 525 | 36.2 | 8600 | | | | 18,000 | 35,000 | 68,000 | 94,000 | 9200 | 20,000 | 36,000 | 69,000 | 112,000 | | | |
| 775 | 53.4 | 11,000 | | | | 28,000 | 51,000 | 95,000 | | 12,000 | 30,000 | 52,000 | 112,000 | | | | |
| 1000 | 68.9 | 16,000 | | | | 39,000 | 67,000 | | | 17,000 | 40,000 | 68,000 | | | | | |
| 1275 | 89.9 | 21,000 | | | | 50,000 | 87,000 | | | 22,000 | 51,000 | 89,000 | | | | | |
| 1500 | 103 | 26,000 | | | | 60,000 | | | | 26,000 | 61,000 | | | | | | |

MARK 630 HIGH PRESSURE REGULATOR

MARK 630 FLOW CAPACITIES IN SCFH OF 0.6 S.G. NATURAL GAS AT 20% DROOP

| Outlet Pressure Range | Outlet Pressure Setting | | Inlet Pressure | | 1" Body Size | | | | | 2" Body Size | | | | |
|-------------------------------------|-------------------------|------|----------------|------|-----------------------|--------|--------|---------|---------|-----------------------|--------|--------|---------|---------|
| | PSIG | BAR | PSIG | BAR | Port Diameter, inches | | | | | Port Diameter, inches | | | | |
| | | | | | 1/8 | 3/16 | 1/4 | 3/8 | 1/2 | 1/8 | 3/16 | 1/4 | 3/8 | 1/2 |
| 275 to 500 PSIG (19 to 34.5 BAR) | 275 | 19 | 300 | 20.7 | 4500 | 7500 | 10,000 | 20,000 | 31,000 | 4600 | 8400 | 13,000 | 23,000 | 37,000 |
| | | | 400 | 27.6 | 6600 | 12,000 | 16,000 | 31,000 | 43,000 | 7000 | 13,000 | 20,000 | 32,000 | 53,000 |
| | | | 525 | 36.2 | 8600 | 16,000 | 21,000 | 39,000 | 56,000 | 9300 | 18,000 | 27,000 | 46,000 | 73,000 |
| | | | 775 | 53.4 | 11,000 | 24,000 | 32,000 | 55,000 | | 13,000 | 28,000 | 44,000 | 73,000 | |
| | | | 1000 | 68.9 | 17,000 | 32,000 | 43,000 | | | 18,000 | 37,000 | 57,000 | | |
| | | | 1275 | 87.9 | 21,000 | 40,000 | 53,000 | | | 22,000 | 48,000 | 77,000 | | |
| | | | 1500 | 103 | 26,000 | 46,000 | | | | 27,000 | 57,000 | | | |
| | 300 | 20.7 | 400 | 27.6 | 6600 | 11,000 | 16,000 | 31,000 | 42,000 | 7000 | 13,000 | 21,000 | 35,000 | 54,000 |
| | | | 550 | 38 | 9700 | 18,000 | 23,000 | 44,000 | 63,000 | 9800 | 20,000 | 30,000 | 52,000 | 78,000 |
| | | | 600 | 41.4 | 9900 | 19,000 | 26,000 | 48,000 | | 10,000 | 21,000 | 34,000 | 59,000 | |
| | | | 700 | 48.3 | 11,000 | 23,000 | 30,000 | 54,000 | | 12,000 | 26,000 | 40,000 | 72,000 | |
| | | | 800 | 55.2 | 13,000 | 26,000 | 35,000 | 61,000 | | 14,000 | 29,000 | 47,000 | 81,000 | |
| | | | 900 | 62.1 | 15,000 | 29,000 | 39,000 | | | 16,000 | 34,000 | 53,000 | | |
| | | | 1300 | 90 | 22,000 | 43,000 | 58,000 | | | 23,000 | 50,000 | 80,000 | | |
| | 400 | 27.6 | 500 | 34.5 | 8300 | 16,000 | 24,000 | 44,000 | 62,000 | 8800 | 17,000 | 28,000 | 49,000 | 77,000 |
| | | | 600 | 41.4 | 10,000 | 24,000 | 33,000 | 61,000 | 86,000 | 11,000 | 25,000 | 40,000 | 75,000 | 112,000 |
| | | | 800 | 55.2 | 13,000 | 30,000 | 41,000 | 76,000 | | 14,000 | 31,000 | 51,000 | 95,000 | |
| | | | 900 | 62.1 | 15,000 | 34,000 | 49,000 | 85,000 | | 16,000 | 36,000 | 58,000 | 110,000 | |
| | | | 1000 | 68.9 | 17,000 | 38,000 | 54,000 | | | 18,000 | 40,000 | 66,000 | | |
| | | | 1200 | 82.7 | 20,000 | 46,000 | 63,000 | | | 21,000 | 48,000 | 80,000 | | |
| | | | 1400 | 96.5 | 24,000 | 55,000 | 76,000 | | | 25,000 | 57,000 | 96,000 | | |
| | 500 | 34.5 | 500 | 34.5 | 8700 | 16,000 | 26,000 | 50,000 | 77,000 | 9000 | 18,000 | 30,000 | 53,000 | 89,000 |
| | | | 750 | 51.7 | 12,000 | 28,000 | 40,000 | 78,000 | 100,000 | 13,000 | 29,000 | 48,000 | 90,000 | 141,000 |
| | | | 900 | 62.1 | 15,000 | 34,000 | 52,000 | 92,000 | | 16,000 | 35,000 | 60,000 | 113,000 | |
| | | | 1000 | 68.9 | 17,000 | 39,000 | 60,000 | 100,000 | | 18,000 | 40,000 | 67,000 | 130,000 | |
| | | | 1500 | 103 | 26,000 | 59,000 | 72,000 | | | 27,000 | 60,000 | 82,000 | | |

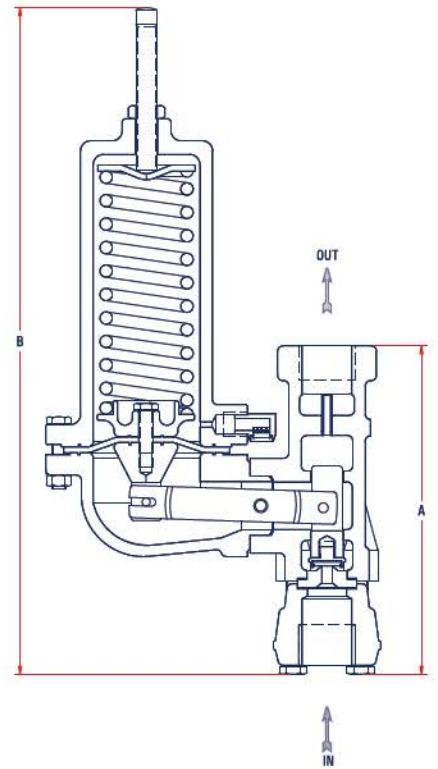
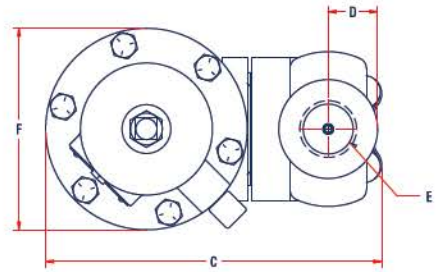
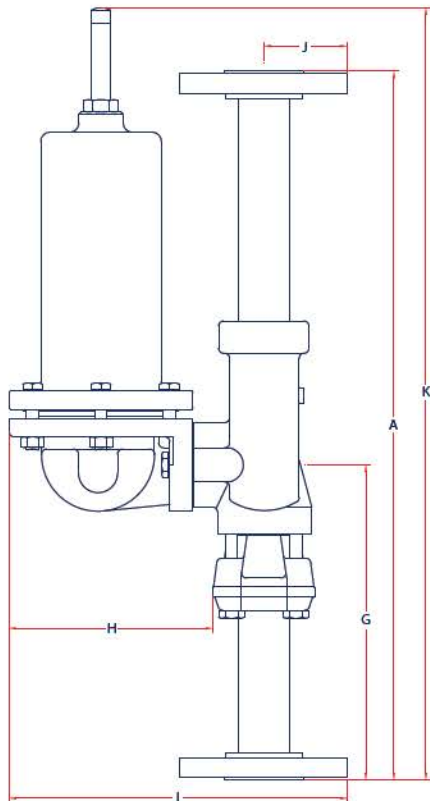
MARK 630 HIGH PRESSURE REGULATOR

MARK 630 DIMENSIONS

| | Body Size | | A | B | C | D | E | F |
|---------------------|-----------|--------|------|-------|------|------|--------|------|
| High Pressure MK630 | 1" | mm | 193 | 392 | 198 | 29 | 1" NPT | 119 |
| | | inches | 7.61 | 15.45 | 7.79 | 1.15 | | 4.67 |
| | 2" | mm | 207 | 398 | 215 | 45 | 2" NPT | 119 |
| | | inches | 8.13 | 15.68 | 8.45 | 1.90 | | 4.67 |
| Low Pressure MK630 | 1" | mm | 193 | 392 | 231 | 29 | 1" NPT | 184 |
| | | inches | 7.61 | 15.45 | 9.09 | 1.15 | | 7.25 |
| | 2" | mm | 207 | 398 | 398 | 45 | 2" NPT | 184 |
| | | inches | 8.13 | 15.68 | 9.75 | 1.90 | | 7.25 |

| Weight Approximate | | |
|--------------------|--------|----------|
| 1" | 20 lbs | 9 kg |
| 2" | 25 lbs | 11.25 kg |

MARK 630 FLANGED DIMENSIONS



| | Body Size | | A | G | H | I | | J | | K |
|---------------------|-----------|--------|-----|-----|-----|--------|-------------------|--------|-------------------|----------|
| | | | | | | CLASS | | CLASS | | |
| | | | | | | 150 RF | 300 RF and 600 RF | 150 RF | 300 RF and 600 RF | |
| High Pressure MK630 | 1" | mm | 457 | 203 | 132 | 218 | 226 | 53.3 | 61.0 | 546 max |
| | | inches | 18 | 8 | 5.2 | 8.6 | 8.9 | 2.1 | 2.4 | 21.5 max |
| | 2" | mm | 508 | 229 | 117 | 241 | 246 | 76.2 | 83.8 | 546 max |
| | | inches | 20 | 9 | 4.6 | 9.5 | 9.7 | 3.0 | 3.3 | 21.5 max |
| Low Pressure MK630 | 1" | mm | 457 | 203 | 198 | 285 | 292 | 53.3 | 61.0 | 533 max |
| | | inches | 18 | 8 | 7.8 | 11.2 | 11.5 | 2.1 | 2.4 | 21 max |
| | 2" | mm | 508 | 229 | 183 | 307 | 312 | 76.2 | 83.8 | 559 max |
| | | inches | 20 | 9 | 7.2 | 12.1 | 12.3 | 3.0 | 3.3 | 22 max |

ORDERING SCHEMATIC

To specify a MK630 High Pressure Regulator, build a model number by making a selection from each category in the Product Designator Coding System below.

| Model # | — | Size | / | 1 | 2 | 3 | 4 | 5 | 6 | 7 |
|---------|---|------|---|---|---|---|---|---|---|---|
| | | | | | | | | | | |

| Model | |
|-------|-----------------|
| 630 | Mark 630 Series |

| Size | |
|------|----|
| 08 | 1" |
| 16 | 2" |

| 4 | Orifice |
|---|---------|
| 2 | 1/8" |
| 3 | 3/16" |
| 4 | 1/4" |
| 6 | 3/8" |
| 8 | 1/2" |

| 1 & 2 | Spring Range | | |
|-------|--------------|-------------|-----------------------------|
| | PSIG | BAR | |
| 010 | 3 - 10 | 0.2 - 0.7 | Low Pressure Spring Ranges |
| 020 | 8 - 20 | 0.6 - 1.4 | |
| 030 | 17 - 30 | 1.2 - 2.1 | |
| 040 | 27 - 40 | 1.9 - 2.8 | |
| 050 | 27 - 50 | 1.9 - 3.5 | High Pressure Spring Ranges |
| 095 | 46 - 95 | 3.2 - 6.6 | |
| 150 | 90 - 150 | 6.2 - 10.3 | |
| 200 | 150 - 200 | 10.3 - 13.8 | |
| 275 | 200 - 275 | 13.8 - 18.9 | |
| 500 | 275 - 500 | 18.9 - 34.5 | |

| 5 | Seat Material |
|---|---------------|
| 0 | Nitrile |
| 1 | Nylon |
| 2 | CTFE |

| 6 | Diaphragm |
|---|--------------|
| 2 | Fluorocarbon |
| 3 | Neoprene |

| 7 | Casing Material |
|---|-----------------------|
| 0 | Iron |
| 1 | Steel (standard NACE) |

NOTE: It is recommended to use Nylon or CTFE seat disks for spring ranges above 150 PSIG

| 3 | Body Construction |
|---|---------------------|
| 0 | Standard NPT Units |
| | Flanged Connections |
| A | 150 # RF* |
| B | 300 # RF* |
| C | 600 # RF* |

* Steel Units Only

