

RLTM

Stainless Steel Tank Weigh Modules



Picture is a representation of actual product

The RLTM weigh module assembly features a stainless steel, welded-seal RL30745 NTEP Certified load cell and a fully stainless mount including all associated hardware. Using a rocker pin-loading concept, this design provides accurate weighing in most conditions. Standard features include both overload and overlift protection, making it ideal for most outdoor, low-capacity tank and vessel weighing applications. Each Rice Lake RLTM module is provided standard with one load cell with 30 feet of cable and one mount.

Load Cell Specifications

Full scale Output:

2.0 (\pm - 0.2) mV/V

Bridge Resistance:

350 ohms

Material/Finish:

Stainless steel

Temperature:

Compensated range 15°F to 104°F (-97°C to 40°C)

Safe Overload:

150% full scale

Safe Sideload:

100% full scale

Rated Excitation:

15VDC

Combined Error:

0.03% full scale

Insulation Resistance:

5,000 megohms

Seal Type:

Welded-seal, IP67

Cable Length:

30 ft (9.1 m) (500 lb-10,000 lb)

Cable Color Code:

Green+ Excitation
 Black- Excitation
 White+ Signal
 Red- Signal

Warranty:

Two-year limited warranty

Standard Features

- Capacities: 500 lb-10,000 lb (226.8 kg-4536.0 kg)
- Stainless steel
- Overload and overlift protection
- Rocker pin loading
- Welded-seal load cells
- Integral lateral stops
- 30 ft cable on load cells

Applications

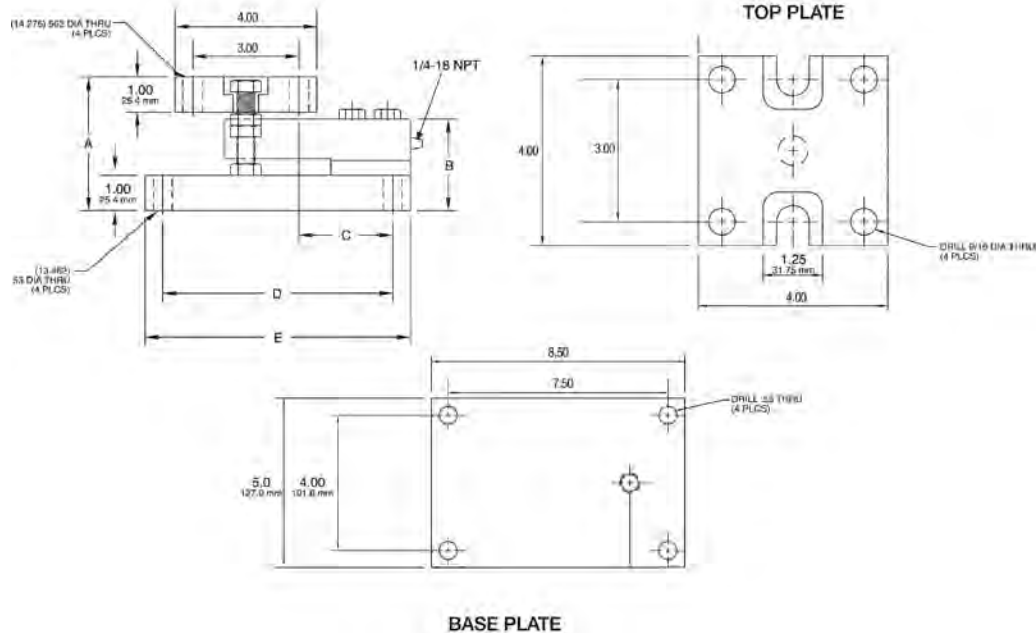
- Lower capacity tank and vessel weighing
- Process control and batching

Complete Kit Includes

- One JB4SS NEMA Type 4X stainless steel signal trim junction box
- Three or four Rice Lake RLTM stainless steel mounting assemblies
- 25 ft of our hostile environment EL147HE SURVIVOR® load cell cable

Load Cell Certifications





Dimensions

Rated Capacity	A	B	C	D	E
lb/in					
500-2,500	3.77	2.59	2.62	6.50	7.50
5,000	3.99	2.83	2.62	6.50	7.50
10,000	4.27	3.08	3.88	7.50	8.50
kg/mm					
226.8-1,134.0	95.7	65.7	66.5	165.1	190.5
2,268.0	101.3	71.8	66.5	165.1	190.5
4,536.0	108.4	78.2	98.5	190.5	215.9

Order Information

Load Rating (Per Module)	Part#	Price
500 lb	159288	\$925.00
1,250 lb	159289	\$925.00
2,500 lb	159290	\$925.00
5,000 lb	159291	\$1,125.00
10,000 lb	159292	\$1,125.00
3-Module Kit		
500 lb	162942	\$2,870.00
1,250 lb	162944	\$2,870.00
2,500 lb	162945	\$2,870.00
5,000 lb	162946	\$3,570.00
10,000 lb	162947	\$3,570.00
4-Module Kit		
500 lb	162948	\$3,795.00
1250 lb	162949	\$3,795.00
2500 lb	162950	\$3,795.00
5000 lb	162951	\$4,595.00
10,000 lb	162953	\$4,595.00