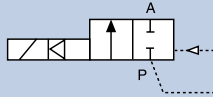


# Servo-Assisted Hard-Coupled Solenoid Valve

0290

## NPT 1/2" - NPT 2", 0-232 PSI

- True zero differential pressure
- Operates on vacuum
- Process proven rugged and reliable design



Shown with 2508 plug

One of the ever reliable workhorses of the Bürkert solenoid range this hard-coupled solenoid valve with plunger piloted rugged diaphragm seal is perfect for vacuum, neutral gases and liquids. Its durable heavy duty construction is available in brass and stainless steel with a range of diaphragm and seal materials.

### Technical Data

<b>Pressure range</b>	0-232 PSI, Max.
<b>Temperature media</b>	+14 °F ... +194 °F
<b>Ambient temperature</b>	131 °F, Max.
<b>Body material</b>	Brass or Stainless steel
<b>Seal material</b>	NBR with brass, FKM with Stainless
<b>Coil material</b>	Epoxy (Class H)
<b>Protection class</b>	IP65
<b>Electrical Connection</b>	2509 cable plug Form A (included)
<b>Accreditations</b>	UL Listed, FM Class 1, Div 2, CSA, CE

### Options

- NBR and EPDM seals
- Cables plug with LED
- Cable plug with varistor
- 240 VAC UL recognized versions
- UL Recognized version with cable plug

### Envelope Dimensions [inch] (see datasheet for details)

2509 cable plug Form A included (see page 30)

Size	A	B	C
1/2"	2.93	1.57	3.76
3/4"	3.94	2.36	4.80
1"	4.53	2.76	5.16

### Ordering Chart

Port connection [inch]	Orifice [mm]	Cv value water	Pressure range [PSI]	Power consumption		Item no. Voltage/Frequency [V/Hz]	
				Inrush [W]	Hold [W]	24 V AC/DC	120 V/60 Hz
<b>Brass</b>							
NPT 1/2	12	3.3	0-232	100	25	452 746	453 058
NPT 3/4	20	5.8	0-232	120	32	453 181	453 182
NPT 1	25	11.7	0-232	120	32	452 862	453 185
<b>Stainless steel</b>							
NPT 1/2	12	3.3	0-232	100	25	453 179	452 819
NPT 3/4	20	5.8	0-232	120	32	453 184	452 747
NPT 1	25	11.7	0-232	120	32	453 187	453 188