

WEIGH MODULES

RL1600 Series

Cast Iron Weigh Modules

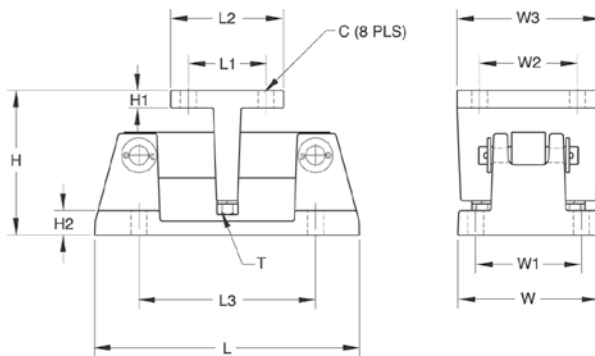


Available in configurations with three or four mounting assemblies.
Picture is a representation of actual product

The RL1600 Series mounting module kit utilizes several Rice Lake Weighing Systems components to provide an unmatched level of performance in tank and hopper weighing applications. The RL1600 Series kit is ideally suited for indoor and outdoor process control operations in the medium- to high-capacity ranges. Each module incorporates self-checking capabilities for thermal expansion and contraction.



Cast iron module with RL75016 double-ended beam load cell.

**Dimensions**

| Rated Capacity | C | H | H1 | H2 | L | L1 | L2 | L3 | T | W | W1 | W2 | W3 |
|------------------|------|-------|------|------|-------|-------|-------|-------|------------|-------|-------|-------|-------|
| lb/in | | | | | | | | | | | | | |
| 1,000-5,000 | 0.56 | 5.00 | 0.50 | 0.50 | 9.31 | 2.75 | 4.00 | 6.25 | 1/2-13 UNC | 5.00 | 3.75 | 2.75 | 4.00 |
| 10,000-25,000 | 0.78 | 7.89 | 0.75 | 0.75 | 12.00 | 6.00 | 8.00 | 7.50 | 3/4-10 UNC | 8.00 | 6.00 | 6.00 | 8.00 |
| kg/mm | | | | | | | | | | | | | |
| 453.6-2,268.0 | 14.2 | 127.0 | 12.7 | 12.7 | 236.5 | 69.9 | 101.6 | 158.8 | 1/2-13 UNC | 127.0 | 95.3 | 69.9 | 101.6 |
| 4,535.9-11,339.8 | 19.8 | 200.4 | 19.1 | 19.1 | 304.8 | 152.4 | 203.2 | 190.5 | 3/4-10 UNC | 203.2 | 152.4 | 152.4 | 203.2 |

Standard Features

- Capacities (per module): 1,000lb-25,000lb (453.6kg-11,339.8kg)
- Cast iron construction
- Self-checking, easy-to-use design allows module to be bolted directly to tank leg without requiring additional mounting plates or load buttons
- Environmentally protected load cells
- Double-ended beam design, center loaded

Optional Features

- Kits available with VPG® Sensortronics 65016 load cells, capacities (per module): 1,000lb-25,000lb (453.6kg-11,339.8kg)

Applications

- Medium- to heavy-capacity tanks, bins and hoppers
- Bulk material management

Complete Kit Includes

- One JB4SS NEMA Type 4X stainless steel signal trim junction box
- Three or four RL1600 cast iron compression mounts
- Three or four RL75016 double-ended shear beam load cells
- 25 ft of our hostile environment EL147HE SURVIVOR® load cell cable

Load Cell Certifications

Order Information

| Load Rating (Per Module) | | Part # | Price |
|---|------------------------|--------------|------------|
| Single Module (Does NOT Include Load Cell) | | | |
| 1,000 lb-5,000 lb | 453.6 kg-2,268.0 kg | 17964 | \$150.00 |
| 10,000 lb-25,000 lb | 4,535.9 kg-11,339.8 kg | 17965 | \$290.00 |
| 3-Module Kit | | | |
| 1,000 lb | 453.6 kg | 25663 | \$1,995.00 |
| 1,500 lb | 680.4 kg | 25664 | \$1,995.00 |
| 2,000 lb | 907.2 kg | 25665 | \$1,995.00 |
| 2,500 lb | 1,134.0 kg | 25666 | \$1,995.00 |
| 3,000 lb | 1,360.8 kg | 25667 | \$1,995.00 |
| 5,000 lb | 2,268.0 kg | 25668 | \$1,995.00 |
| 10,000 lb | 4,535.9 kg | 25669 | \$2,595.00 |
| 15,000 lb | 6,803.9 kg | 25671 | \$2,595.00 |
| 20,000 lb | 9,071.9 kg | 25672 | \$2,595.00 |
| 25,000 lb | 11,339.8 kg | 25674 | \$2,595.00 |
| 4-Module Kit | | | |
| 1,000 lb | 453.6 kg | 25675 | \$2,550.00 |
| 1,500 lb | 680.4 kg | 25676 | \$2,550.00 |
| 2,000 lb | 907.2 kg | 25677 | \$2,550.00 |
| 2,500 lb | 1,134.0 kg | 25678 | \$2,550.00 |
| 3,000 lb | 1,360.8 kg | 25679 | \$2,550.00 |
| 5,000 lb | 2,268.0 kg | 25680 | \$2,550.00 |
| 10,000 lb | 4,535.9 kg | 25681 | \$3,350.00 |
| 15,000 lb | 6,803.9 kg | 25682 | \$3,350.00 |
| 20,000 lb | 9,071.9 kg | 25683 | \$3,350.00 |
| 25,000 lb | 11,339.8 kg | 25684 | \$3,350.00 |

Load Cell Upgrade

| RL75016SS Stainless Steel Load Cells | |
|---|--|
| Three mount kits, 1,000 lb to 25,000 lb | \$75.00 added to list price |
| Four mount kits, 1,000 lb to 25,000 lb | \$100.00 added to list price |
| RL75016WHE Stainless Steel Hermetic Load Cells | |
| Three mount kits 1,000 lb to 5,000 lb | \$390.00, 10k-25k \$435.00 added to list price |
| Four mount kits 1,000 lb to 5,000 lb | \$520.00, 10k-25k \$580.00 added to list price |
| <i>Contact factory for a 50,000 lb to 75,000 lb upgrade</i> | |

VPG Sensortronics 65016 Order Information

| Load Rating (Per Module) | | Part # | Price |
|--------------------------|------------------------|--------------|------------|
| 3-Module Kit | | | |
| 1,000 lb | 453.6 kg | 25685 | \$2,350.00 |
| 1,500 lb | 680.4 kg | 25686 | \$2,350.00 |
| 2,500 lb | 1,134.0 kg | 25688 | \$2,350.00 |
| 5,000 lb | 2,268.0 kg | 25690 | \$2,350.00 |
| 10,000 lb | 4,535.9 kg | 25691 | \$2,950.00 |
| 15,000 lb | 6,803.9 kg | 25692 | \$2,950.00 |
| 20,000 lb | 9,071.9 kg | 25693 | \$2,950.00 |
| 25,000 lb | 11,339.8 kg | 25694 | \$2,950.00 |
| 4-Module Kit | | | |
| 1,000 lb | 453.6 kg | 25695 | \$3,050.00 |
| 1,500 lb | 680.4 kg | 25696 | \$3,050.00 |
| 2,500 lb | 1,134.0 kg | 25698 | \$3,050.00 |
| 5,000 lb | 2,268.0 kg | 25700 | \$3,050.00 |
| 10,000 lb | 4,535.9 kg | 25701 | \$3,875.00 |
| 15,000 lb | 6,803.9 kg | 25702 | \$3,875.00 |
| 20,000 lb | 9,071.9 kg | 25703 | \$3,875.00 |
| 25,000 lb | 11,339.8 kg | 25704 | \$3,875.00 |
| Dummy Load Cells | | | |
| 1,000 lb-5,000 lb | 453.6 kg-2,268.0 kg | 18236 | \$20.00 |
| 10,000 lb-25,000 lb | 4,535.9 kg-11,339.8 kg | 18237 | \$35.00 |

Shims, Mild Steel

| | Part # | Price |
|----------------------------|---------------|--------|
| 1,000 lb-5,000 lb | | |
| 0.0625 | 150844 | \$1.00 |
| 0.125 | 150845 | \$1.50 |
| 0.250 | 150846 | \$1.75 |
| 10,000 lb-25,000 lb | | |
| 0.0625 | 150847 | \$3.50 |
| 0.125 | 150848 | \$6.00 |
| 0.250 | 150849 | \$6.50 |