

MODEL 37

1.5% LOW PRESSURE GAUGES

Designed for use where pressure of less than 10 psi is to be measured.



SPECIFICATIONS:

Dial Size:	4"
Accuracy:	±1.5% FS - ANSI Grade A
Case:	304SS
Bezel:	304SS Bayonet Lock Type
Socket:	316SS
Capsule:	316SS
Movement:	Brass
Lens:	Laminated Safety Glass
Pointer:	Aluminum
Dial:	Heavy Gage Aluminum
Adjustment::	Adjustable Set Screw
Connection:	1/4" or 1/2" NPT Lower & Lower Back (Fully Welded)
Range:	See Range Chart
Protection Standard:	IP65 in accordance with NF EN 60529

MODEL CODES:

Model 37S 316SS Capsule and Socket, 304SS Case

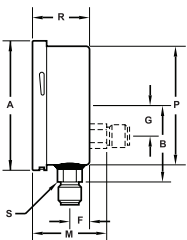
▶ AVAILABLE OPTIONS:

- Front Flange (back mount only)
- Back Flange
- U-Clamp

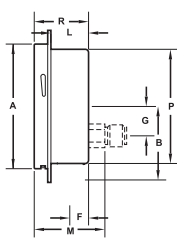
Estimated Shipping Weight	
DIAL SIZE	DRY
4"	1 lb. 10 oz.

▶ AVAILABLE CASE STYLES AND DIMENSIONS:

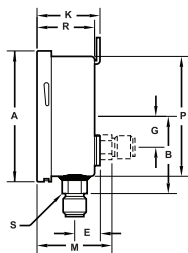
LOWER & BACK



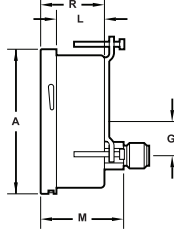
FRONT FLANGE



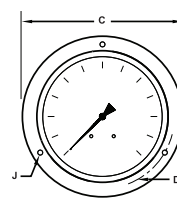
BACK FLANGE



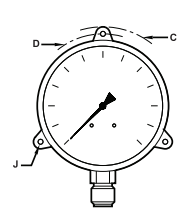
U-CLAMP



FRONT FLANGE
FRONT VIEW



BACK FLANGE
FRONT VIEW



DIAL	A	B	C	D	E	F	G	J	K	L	M	P	R	S
4"	4.18" (106,2mm)	2.68" (68mm)	5.12" (130mm)	4.65" (118mm)	1.00" (25,4mm)	0.91" (23mm)	1.24" (31,5mm)	0.22" (5,5mm)	2.22" (56,4mm)	1.55" (39,3mm)	2.81" (71,5mm)	3.86" (98mm)	2.14" (54,5mm)	.87" (22mm)



Tel-Tru Manufacturing Company
 408 St. Paul Street, Rochester, New York 14605 USA
 Phone: 585.232.1440 • 800.232.5335 • Fax: 585.232.3857 • E-mail: info@teltru.com • Web: www.teltru.com

► HOW TO ORDER:

To Build A Part Number: Select one code from each column to build your gauge.

DIAL	MODEL CODE	TUBE & SOCKET	CASE	CONN. SIZE	CONN. LOCATION	CONN. TYPE	RANGE & SCALE	OPTIONS
4"	40 37	S = 316SS	S = Stainless Steel	2 = 1/2" 4 = 1/4"	L = Lower B = Lower Back	1 = NPT	See Range Chart	E = Back Flange F = Front Flange* V = U-Clamp*

*Available on Back Mount only

Example:

Specs: 4", Model 37, 316SS, 1/4" Lower, NPT, 0-30 IW, Back Flange

Select:

40 37	S	S	4	L	1	C6P	E
-------	---	---	---	---	---	-----	---

Ordering Format: 4037SS4L1C6PE

► STANDARD RANGES:

CODE = RANGE	INTERVALS	DIVISIONS
B1A = 0-5 psi	.5	.05
B4A = 0-10 psi	1	.1
V1P = -30-0 IWV	5	.2
B4P = 0-10 IW	1	.1
B7P = 0-15 IW	3	.1
C6P = 0-30 IW	5	.2
D6P = 0-60 IW	10	.5
D9P = 0-100 IW	10	1
E3P = 0-150 IW	30	1

NOTE: OTHER RANGES AVAILABLE.

MODEL 42

0.25% TEST GAUGES

Designed as a master reference for checking the accuracy of other pressure instruments.



SPECIFICATIONS:

Dial Size:	6"
Accuracy:	±0.25% FS - ANSI Grade 3A
Case:	304SS (Non-Fillable)
Bezel:	304SS Bayonet Lock Type
Socket:	316SS
Sensing Element:	316SS
Lens:	Laminated Safety Glass
Pointer:	Aluminum, Balanced, Light weight, Knife Edge
Dial:	Aluminum, Anti Parallax Mirror
Connection:	1/2" or 1/4" NPT, Lower or Lower Back
Range:	See Range Chart
Scales:	psi (metric available)
Safety Blowout Discs:	Standard
Protection Standard:	IP65 in accordance with NF EN 60529

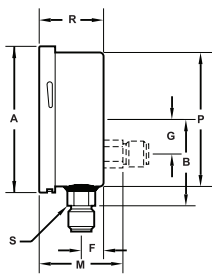
Estimated Shipping Weight	
DIAL SIZE	DRY
6"	2 lbs. 6 oz.

▶ AVAILABLE OPTIONS:

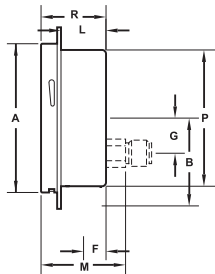
- Front Flange (back mount only)
- Back Flange
- Calibration Certificate
- Oxygen Cleaning

▶ AVAILABLE CASE STYLES AND DIMENSIONS:

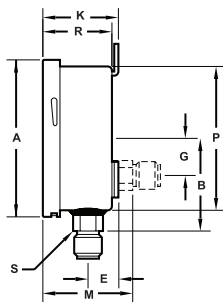
LOWER & BACK



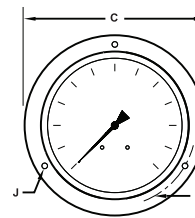
FRONT FLANGE



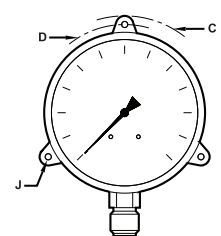
BACK FLANGE



FRONT FLANGE FRONT VIEW



BACK FLANGE FRONT VIEW



DIAL	A	B	C	D	E	F	G	J	K	L	M	P	R	S
6"	5.91" (150,2mm)	3.35" (85mm)	7.09" (180mm)	6.61" (168mm)	1.00" (25,4mm)	.91" (23mm)	1.24" (31,5mm)	0.22" (5,5mm)	2.22" (56,4mm)	1.55" (39,3mm)	2.70" (68,5mm)	5.59" (1,42mm)	2.15" (54,5mm)	0.87" (22mm)



Tel-Tru Manufacturing Company
 408 St. Paul Street, Rochester, New York 14605 USA
 Phone: 585.232.1440 • 800.232.5335 • Fax: 585.232.3857 • E-mail: info@teltru.com • Web: www.teltru.com

► TO ORDER:

To Build A Part Number: Select one code from each column to build your gauge.

DIAL	MODEL CODE	TUBE & SOCKET	CASE	CONN. SIZE	CONN. LOCATION	CONN. TYPE	RANGE & SCALE	OPTIONS
6"	60 42	S = 316SS	S = Stainless Steel	2 = 1/2" 4 = 1/4"	L = Lower B = Lower Back	1 = NPT 2 = BSPT 3 = BSP straight	See Range Chart	E = Back Flange F = Front Flange* R = Restrictor Oxygen Cleaning **

* Front Flange available on Back Mount only.

** Oxygen cleaning is sold separately. Order part number 10000006.

Example:

Specs: 6", Model 42S, 316SS, 1/2" Lower, NPT, 0-30 psi, Back Flange

Select:

60 42	S	S	2	L	1	C6A	E
-------	---	---	---	---	---	-----	---

Ordering Format: 6042SS2L1C6AE

► STANDARD RANGES:

CODE = RANGE (psi)	INTERVALS (Hg) (psi)	DIVISIONS (Hg) (psi)
V1K = 30" Hg	2"	.2"
Z2A = 30-0-30	10" 5	.1" .5

CODE = RANGE (psi)	INTERVALS (psi)	DIVISIONS (psi)
B7A = 0-15	3	.2
C6A = 0-30	2	.2
D6A = 0-60	5	.5
D9A = 0-100	10	.5
E4A = 0-160	10	1
E5A = 0-200	20	2
E8A = 0-300	20	2
F2A = 0-400	20	2
F4A = 0-600	50	5

CODE = RANGE (psi)	INTERVALS (psi)	DIVISIONS (psi)
F8A = 0-1000	100	5
H2A = 0-1500	100	10
H5A = 0-2000	100	10
H9A = 0-3000	200	20
J8A = 0-5000	500	50
K4A = 0-10,000	1000	50
K7A = 0-15,000	1000	100

NOTE: ABOVE 15,000 PSI AVAILABLE ONLY WITH 1/2" BSP STRAIGHT CONNECTION (G¹/₂).
NOTE: OTHER RANGES AND SCALES AVAILABLE. CONSULT FACTORY.

MODEL 50

METAL CASE UTILITY PRESSURE GAUGES

Designed for general commercial and industrial markets to measure air, water, oil, gas or any medium not corrosive to brass.



SPECIFICATIONS:

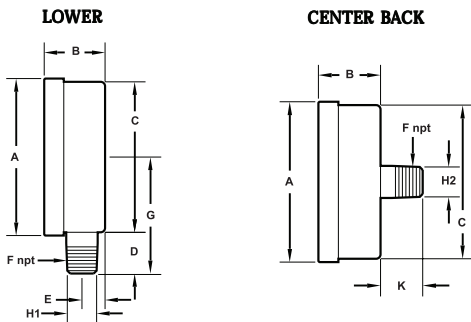
Dial Size:	1-1/2", 2", 2-1/2" or 3-1/2"
Accuracy:	±3-2-3% ANSI Grade B
Case:	Black Painted Metal (dry only)
Socket:	Brass
Bourdon Tube:	Phosphor Bronze
Movement:	Brass
Lens:	Acrylic
Pointer:	Aluminum
Dial:	Aluminum
Connection:	1-1/2": 1/8" NPT Lower or Center Back 2": 1/8" NPT or 1/4" NPT Lower or Center Back 2-1/2": 1/4" NPT Lower or Center Back 3-1/2": 1/4" NPT Lower
Range:	See Range Chart
Scales:	psi & bar (kPa = bar x 100)

➤ AVAILABLE OPTIONS:

- Oxygen Cleaning
- **Other configurations available upon request**

Estimated Shipping Weight	
DIAL SIZE	DRY
1-1/2"	3 oz.
2"	5 oz.
2-1/2"	5 oz.
3-1/2"	8 oz.

➤ AVAILABLE CASE STYLES AND DIMENSIONS:



DIAL	NPT	A	B	C	D	E	G	H1	H2	K
1-1/2"	1/8"	1.69" (42,9mm)	1.06" (26,9mm)	1.65" (41,9mm)	0.82" (20,8mm)	0.35" (8,9mm)	1.65" (41,9mm)	0.55" (14mm)	0.47" (11,9mm)	0.67" (17mm)
2"	1/8"	2.13" (54,1mm)	1.10" (27,9mm)	2.05" (52,1mm)	0.82" (20,8mm)	0.35" (8,9mm)	1.85" (47mm)	0.55" (14mm)	0.55" (14mm)	0.90" (22,9mm)
2"	1/4"	2.13" (54,1mm)	1.10" (27,9mm)	2.05" (52,1mm)	0.94" (23,9mm)	0.35" (8,9mm)	1.97" (50mm)	0.55" (14mm)	0.55" (14mm)	0.90" (22,9mm)
2-1/2"	1/4"	2.52" (64mm)	1.10" (27,9mm)	2.48" (63mm)	0.92" (23,4mm)	0.35" (8,9mm)	2.16" (54,9mm)	0.55" (14mm)	0.55" (14mm)	0.90" (22,9mm)
3-1/2"	1/4"	3.54" (89,9mm)	1.18" (30mm)	3.44" (87,4mm)	0.96" (24,4mm)	0.43" (10,9mm)	2.68" (68,1mm)	0.55" (14mm)		



Tel-Tru Manufacturing Company
 408 St. Paul Street, Rochester, New York 14605 USA
 Phone: 585.232.1440 • 800.232.5335 • Fax: 585.232.3857 • E-mail: info@teltru.com • Web: www.teltru.com

► HOW TO ORDER:

To Build A Part Number: Select dial size & then select one code from each column to build your gauge.

DIAL	MODEL CODE	TUBE & SOCKET	CASE	CONN. SIZE	CONN. LOCATION	CONN. TYPE	RANGE & SCALE	OPTIONS
1-1/2"	15 50	B = Brass	C = Black Painted Steel	1 = 1/8"	L = Lower C = Center Back	1 = NPT	See Range Chart Up to 600 psi	Oxygen Cleaning *
2"	20 50	B = Brass	C = Black Painted Steel	1 = 1/8" 4 = 1/4"	L = Lower C = Center Back	1 = NPT	See Range Chart Up to 600 psi	Oxygen Cleaning *
2-1/2"	25 50	B = Brass	C = Black Painted Steel	4 = 1/4"	L = Lower C = Center Back	1 = NPT	See Range Chart	Oxygen Cleaning *
3-1/2"	35 50	B = Brass	C = Black Painted Steel	4 = 1/4"	L = Lower	1 = NPT	See Range Chart	Oxygen Cleaning *

* Oxygen cleaning is sold separately. Order part number 10000006.

Example:

Specs: 1-1/2", Model 50B, Brass, Black Painted Steel, 1/8" Lower, NPT, 0-600 psi/bar

Select:

15 50	B	C	1	L	1	F4F
-------	---	---	---	---	---	-----

Ordering Format: 1550BC1L1F4FL

► STANDARD RANGES:

Note: Dual Scale, psi/bar (KPA = bar x 100)

CODE = RANGE (psi)	INTERVALS (Hg) (psi)	DIVISIONS (Hg) (psi)
V1Z = 30" Hg	5"	.5"
Z2Z = 30-0-30	10" 10	1" 1
Z3Z = 30-0-60	10" 10	2" 1

CODE = RANGE (psi)	INTERVALS (psi)	DIVISIONS (psi)
B7F = 0-15	2	.2
C6F = 0-30	5	.5
D6F = 0-60	10	1
D9F = 0-100	20	2
E4F = 0-160	20	2
E5F = 0-200	40	5
E8F = 0-300	50	5
F2F = 0-400	50	5
F4F = 0-600	100	10

CODE = RANGE (psi)	INTERVALS (psi)	DIVISIONS (psi)
F8F = 0-1000	200	20



MODEL 51

PLASTIC CASE UTILITY PRESSURE GAUGES

General utility gauge designed for the pool, spa, and irrigation industries.



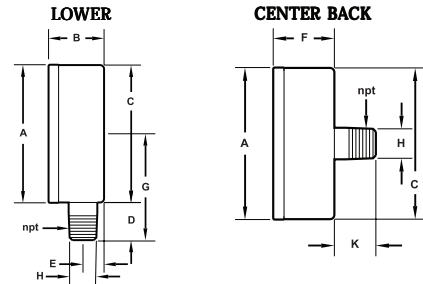
SPECIFICATIONS:

Dial Size:	1-1/2" or 2"
Accuracy:	±3-2-3% - ANSI Grade B
Case:	ABS Black Plastic (dry only)
Socket:	Brass
Bourdon Tube:	Phosphor Bronze
Movement:	Brass
Lens:	Acrylic
Pointer:	Aluminum
Dial:	Aluminum
Connection:	1-1/2": 1/8" NPT Center Back 2": 1/8" NPT or 1/4" NPT Lower or Center Back
Range:	See Range Chart
Scales:	psi

Estimated Shipping Weight	
DIAL SIZE	DRY
1-1/2"	3 oz.
2"	4 oz.

➤ AVAILABLE CASE STYLES AND DIMENSIONS:

DIAL	A	B	C	D	E	F	G	H	K
1-1/2"	1.76" (44,7mm)		1.76" (44,7mm)			1.06" (26,9mm)		0.47" (11,9mm)	0.62" (15,7mm)
2"	2.12" (53,8mm)	1.10" (27,9mm)	2.08" (52,8mm)	0.87" (22,1mm)	0.35" (8,9mm)	1.06" (26,9mm)	1.93" (49mm)	0.55" (14mm)	0.90" (22,9mm)



➤ HOW TO ORDER:

To Build A Part Number: Select one code from each column to build your gauge.

DIAL	MODEL CODE	TUBE & SOCKET	CASE	CONN. SIZE	CONN. LOCATION	CONN. TYPE	RANGE & SCALE
1-1/2"	15 51	B = Brass	P = ABS Black Plastic	1 = 1/8"	C = Center Back	1 = NPT	See Range Chart
2"	20 51	B = Brass	P = ABS Black Plastic	1 = 1/8" 4 = 1/4"	L = Lower C = Center Back	1 = NPT	See Range Chart

Example:

Specs: 1-1/2", Model 51B, Brass, Black Plastic, 1/8" Center Back, NPT, 0-30 psi

Select:	15 51	B	P	1	C	1	C6A
----------------	-------	---	---	---	---	---	-----

Ordering Format: 1551BP1C1C6A

➤ STANDARD RANGES*:

CODE = RANGE (psi)	INTERVALS (Hg) (psi)	DIVISIONS (Hg) (psi)
Z3A = 30-0-60	10" 10	2" 1
Z2A = 30-0-30	10" 10	2" 2
C6A = 0-30	5	2
D6A = 0-60	10	2
D9A = 0-100	20	2

*Other ranges available for special order, consult factory.

MODEL 52



MECHANICAL CONTRACTOR PRESSURE GAUGES

A utility gauge used with any liquid or gas not corrosive to bronze. Typically used for HVAC applications.



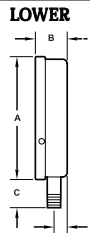
SPECIFICATIONS:

Dial Size:	4-1/2"
Accuracy:	±1% FS - ANSI Grade A
Case:	Stainless Steel (dry only)
Socket:	Brass
Bourdon Tube:	Phosphor Bronze
Movement:	Phosphor Bronze
Lens:	Acrylic
Pointer:	Aluminum, Adjustable
Dial:	Heavy Gage Aluminum
Connection:	1/4" NPT Lower Only
Restrictor:	Standard
Range:	See Range Chart
Scales:	psi

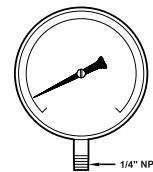
Estimated Shipping Weight	
DIAL SIZE	DRY
4-1/2"	13 oz.

► AVAILABLE CASE STYLES AND DIMENSIONS:

DIAL	A	B	C	D
4-1/2"	4.94" (125,4mm)	1.19" (30,2mm)	1.06" (26,9mm)	0.44" (11,2mm)



FRONT VIEW



► HOW TO ORDER:

To Build A Part Number: Select one code from each column to build your gauge.

DIAL	MODEL CODE	TUBE & SOCKET	CASE	CONN. SIZE	CONN. LOCATION	CONN. TYPE	RANGE & SCALE
4-1/2"	45 52	B = Brass	S = Stainless Steel	4 = 1/4"	L = Lower	1 = NPT	See Range Chart

Example:

Specs: 4-1/2", Model 52B, Brass, Stainless Steel, 1/4" Lower NPT, 0-30 psi

Select:	45 52	B	S	4	L	1	C6A
----------------	-------	---	---	---	---	---	-----

Ordering Format: 4552BS4L1C6A

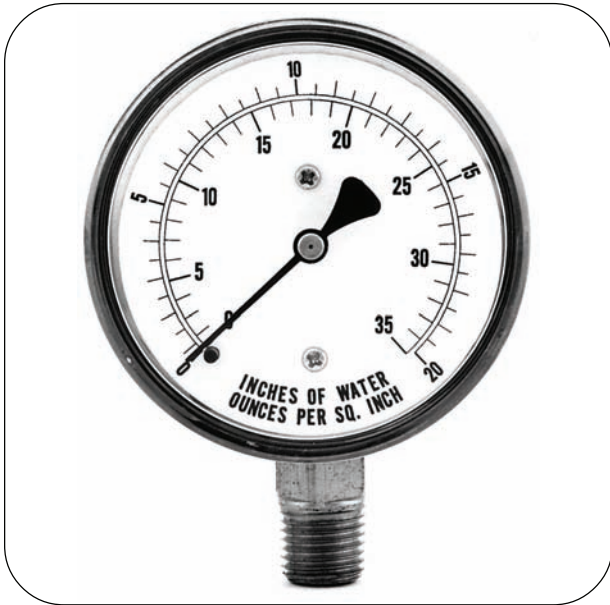
► STANDARD RANGES:

CODE = RANGE (psi)	INTERVALS (psi)	DIVISIONS (psi)
Z2A = 30-0-30	5	1
Z3A = 30-0-60	10	2
B7A = 0-15	1	.25
C6A = 0-30	5	.5
D6A = 0-60	10	1
D9A = 0-100	20	2
E4A = 0-160	20	2
E5A = 0-200	20	2
E8A = 0-300	50	5
F2A = 0-400	50	5
F4A = 0-600	100	10

MODEL 55

LOW PRESSURE DIAPHRAGM-ACTUATED UTILITY PRESSURE GAUGES

Designed for use with air, gas, oil, water or any medium not corrosive to brass or bronze and where pressure of less than 10 psi is to be measured.



SPECIFICATIONS:

Dial Size:	2-1/2"
Accuracy:	±3-2-3% - ANSI Grade B
Case:	Black Painted Steel (dry only)
Socket:	Brass
Capsule:	Phosphor Bronze Diaphragm
Movement:	Brass
Lens:	Acrylic
Pointer:	Aluminum
Dial:	Aluminum
Connection:	1/4" NPT Lower or Center Back
Restrictor:	Standard
Zero Adjust:	Lower Mount Only
Range:	See Range Chart

Estimated Shipping Weight	
DIAL SIZE	DRY
2-1/2"	9 oz.

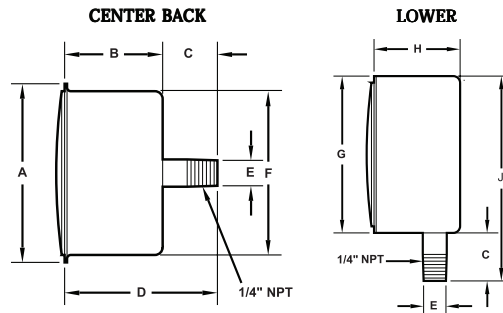
➤ AVAILABLE OPTIONS

- Oxygen Cleaning (dry)

➤ AVAILABLE CASE STYLES AND DIMENSIONS:

➤ STANDARD RANGES:

CODE = RANGE	INTERVALS	DIVISIONS
B1A = 0-5 psi	1	.1
B4A = 0-10 psi	2	.2
B4P = 0-10 IW	2	.2
B7P = 0-15 IW	3	.2
C6P = 0-30 IW	5	.5
D6P = 0-60 IW	10	1
D9P = 0-100 IW	20	2
E3P = 0-150 IW	30	2
E5P = 0-200 IW	20	2
B7R = 0-15 IW/oz.	20	2
C8R = 0-35 IW/oz.	5	1
D6R = 0-60 IW/oz.	10	1
D9R = 0-100 IW/oz.	20	2



DIAL	A	B	C	D	E	F	G	H	J
2-1/2"	2.85" (72,4mm)	1.60" (40,6mm)	.85" (21,6mm)	2.45" (62,2mm)	.55" (14mm)	2.60" (66mm)	2.60" (66mm)	1.70" (43,2mm)	3.45" (87,6mm)

➤ HOW TO ORDER:

To Build A Part Number: Select one code from each column to build your gauge.

DIAL	MODEL CODE	TUBE & SOCKET	CASE	CONN. SIZE	CONN. LOCATION	CONN. TYPE	RANGE & SCALE	OPTIONS
2-1/2"	25 55	B = Brass	C = Black Painted Steel	4 = 1/4"	L = Lower C = Center Back	1 = NPT	See Range Chart	Oxygen Cleaning *

Example: **Specs:** 2-1/2", Model 55B, Brass, Black Painted Steel, 1/4" Lower, NPT, 0-5 psi

Select:	25 55	B	C	4	L	1	B1A
----------------	-------	---	---	---	---	---	-----

Ordering Format: 2555BC4L1B1AC

* Oxygen cleaning is sold separately. Order part number 10000006.