

# MODEL 10

## SOLID FRONT PROCESS PRESSURE GAUGES

*Solid front, blowout back, field fillable model, designed for the rugged applications of the process and power industries which must withstand the effects of corrosive atmosphere, vibration or severe pulsations.*



### SPECIFICATIONS:

Dial Size:	4-1/2"
Accuracy:	±0.5% FS - ANSI Grade 2A
Socket:	316SS or Monel 400
Bourdon Tube:	316SS or Monel
Movement:	SS Rotary Geared with Overload/ Underload Stops
Lens:	Laminated Safety Glass
Pointer:	Micrometer Adjustable
Dial:	Heavy Gage Aluminum
Connection:	1/4" NPT or 1/2" NPT Lower Mount
Range:	See Range Chart
Scales:	psi (metric available)
Fillable:	Rubber membrane included
Blowout Back:	Standard
Protection Standard:	IP65 in accordance with NF EN 60529

### MODEL CODES:

Model 10S	316SS Tube and Socket
Model 10M	Monel Tube and Socket

### CASE STYLE CODES:

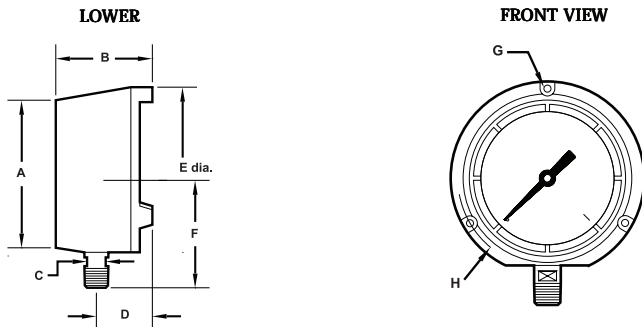
<b>R</b> =	Polypropylene Turret Style Molded Fiberglass Reinforced Thermoplastic
<b>T</b> =	Phenolic Turret Style

Estimated Shipping Weights		
DIAL SIZE	DRY	FILLED
4-1/2"	1 lb. 12 oz.	2 lbs. 12 oz.

### ➤ AVAILABLE OPTIONS:

- Fill (glycerine standard)
- Plastic Lens
- Other Fluids Available
- Anti-Vibration dampening movement (replaces the need for a fill fluid)
- Restrictor
- Oxygen Cleaning (dry only)
- Calibration Certificate

### ➤ AVAILABLE CASE STYLES AND DIMENSIONS:



DIAL	A	B	C	D	E	F	G	H
R - CASE 4-1/2"	5.08" (129mm)	1.69" (43mm)	.63" (15,9mm)	1.50" (38mm)	5.83" (148mm)	4.02" (102mm)	.22" (5,6mm)	5.39" (137mm)
T-CASE 4-1/2"	5.08" (129mm)	3.11" (79mm)	.63" (15,9mm)	1.67" (42,5mm)	5.83" (148mm)	4.02" (102mm)	.22" (5,6mm)	5.39" (137mm)



Tel-Tru Manufacturing Company  
 408 St. Paul Street, Rochester, New York 14605 USA  
 Phone: 585.232.1440 • 800.232.5335 • Fax: 585.232.3857 • E-mail: info@teltru.com • Web: www.teltru.com

► HOW TO ORDER:

To Build A Part Number: Select one code from each column to build your gauge.

DIAL	MODEL CODE	TUBE & SOCKET	CASE	CONN. SIZE	CONN. LOCATION	CONN. TYPE	RANGE & SCALE	OPTIONS
4-1/2"	<b>45 10</b>	<b>S</b> = 316SS <b>M</b> = Monel	<b>R</b> = Polypropylene <b>T</b> = Phenolic	<b>2</b> = 1/2" <b>4</b> = 1/4"	<b>L</b> = Lower	<b>1</b> = NPT <b>2</b> = BSPT <b>3</b> = BSP straight	See Range Chart	<b>G</b> = Glycerine Fill <b>P</b> = Plastic Lens <b>R</b> = Restrictor <b>S</b> = Silicone Fill <b>Ø</b> = Dampened Movement Oxygen Cleaning *

\* Oxygen cleaning is sold separately. Order part number 10000006.

Example:

**Specs:** 4-1/2", Model 10, 316SS, 1/2" Lower, NPT, 0-30 psi, Glycerine Fill

**Select:**

45 10	S	R	2	L	1	C6A	G
-------	---	---	---	---	---	-----	---

**Ordering Format:** 4510SR2L1C6AG

► STANDARD RANGES:

CODE = RANGE (psi)	INTERVALS (Hg) (psi)	DIVISIONS (Hg) (psi)	CODE = RANGE (psi)	INTERVALS (psi)	DIVISIONS (psi)	Code = RANGE (psi)	INTERVALS (psi)	DIVISIONS (psi)
<b>V1K</b> = VAC 30" Hg-0	5"	.2"	<b>B7A</b> = 0-15	1	.1	<b>F8A</b> = 0-1000	100	10
<b>Z1A</b> = 30-0-15	5" 3	.5" .2	<b>C6A</b> = 0-30	5	.2	<b>H2A</b> = 0-1500	300	10
<b>Z2A</b> = 30-0-30	10" 5	1" .5	<b>D6A</b> = 0-60	10	.5	<b>H5A</b> = 0-2000	200	20
<b>Z3A</b> = 30-0-60	10" 10	1" 1	<b>D9A</b> = 0-100	10	1	<b>H9A</b> = 0-3000	500	20
<b>Z4A</b> = 30-0-100	30" 10	2" 1	<b>E4A</b> = 0-160	20	2	<b>J8A</b> = 0-5000	500	50
<b>Z6A</b> = 30-0-200	30" 20	5" 2	<b>E5A</b> = 0-200	20	2	<b>K4A</b> = 0-10,000	1000	100
			<b>E8A</b> = 0-300	50	2	<b>K7A</b> = 0-15,000	3000	100
			<b>F2A</b> = 0-400	50	5			
			<b>F4A</b> = 0-600	100	5			
			<b>F7A</b> = 0-800	100	10			

**ALTITUDE RANGES**

CODE = RANGE (ft./H <sub>2</sub> O/psi)	FIGURE INTERVALS (ft.)	INTERVALS (psi)	DIVISIONS (ft.)	DIVISIONS (psi)
<b>C8T</b> = 0-35/0-15	5	3	.5	.25
<b>G1T</b> = 0-70/0-30	5	5	.5	.25
<b>E2T</b> = 0-140/0-60	10	5	1	1
<b>N8T</b> = 0-230/0-100	20	10	5	1
<b>N9T</b> = 0-370/0-160	40	20	5	2
<b>N7T</b> = 0-460/0-200	40	20	10	2
<b>N6T</b> = 0-690/0-300	50	30	10	5

**RECEIVER RANGES**

CODE = RANGE	FIGURE INTERVALS	DIVISIONS
<b>V6V</b> = 3-15 psi (0-100%)	10	1

**AMMONIA RANGES**

CODE = RANGE (psi)	INTERVALS (Hg) (psi)	DIVISIONS (Hg) (psi)
<b>U6Y</b> = 30-0-150	30" 20	5" 2
<b>Z7Y</b> = 30-0-300	30" 20	5" 5

**NOTE: ABOVE 15,000 PSI AVAILABLE ONLY WITH 1/2" BSP STRAIGHT CONNECTION (G<sup>1</sup>/<sub>2</sub>).**  
**NOTE: OTHER RANGES AND SCALES AVAILABLE. CONSULT FACTORY.**

# MODEL 30

## 1% STAINLESS STEEL PRESSURE GAUGES - DRY OR LIQUID FILLED

*Designed for heavy duty service in process and industrial applications such as chemical, petrochemical, power, food processing and biotechnology.*



### SPECIFICATIONS:

Dial Size:	2-1/2", 4" or 6"
Accuracy:	±1% FS - ANSI Grade 1A
Case:	304SS
Bezel:	304SS Bayonet Lock Type
Socket:	316SS or Monel
Bourdon Tube:	316SS or Monel
Movement:	316SS or Monel with Overload/ Underload Stops
Lens:	Laminated Safety Glass
Pointer:	2-1/2": Non-Adjustable 4": Friction Adjustable 6": Micrometer Adjustable
Dial:	Heavy Gage Aluminum
Connection:	2-1/2": 1/4" NPT Lower or Center Back 4": 1/4" NPT & 1/2" NPT Lower or Lower Back 6": 1/2" NPT Lower or Lower Back
Range:	See Range Chart
Scales:	psi (metric available)
Protection Standard:	IP65 in accordance with NF EN 60529

### ► AVAILABLE OPTIONS:

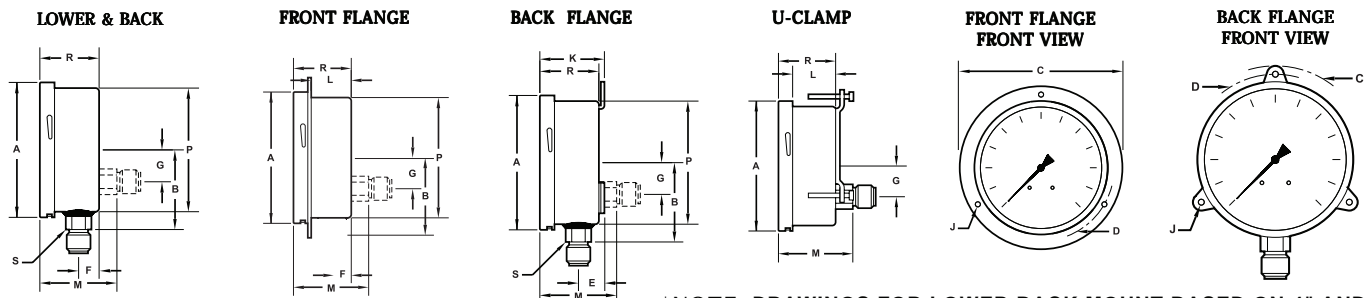
- U-Clamp (2-1/2" - 4")
- Front Flange (back mount only)
- Back Flange
- Fill (Glycerine Standard)
- Other Fluids Available
- Drag Pointer (4" & dry only)
- Oxygen Cleaning (dry only)

### MODEL CODES:

Model 30S	316SS Tube and Socket
Model 30M	Monel Tube and Socket

Estimated Shipping Weights		
DIAL SIZE	DRY	FILLED
2-1/2"	6 oz.	9 oz.
4"	1 lb. 3 oz.	2 lbs.
6"	2 lbs. 1 oz.	3 lbs. 6 oz.

### ► AVAILABLE CASE STYLES AND DIMENSIONS:



\*NOTE: DRAWINGS FOR LOWER BACK MOUNT BASED ON 4" AND 6"

DIAL	A	B	C	D	E	F	G	J	K	L	M	P	R	S
2-1/2"	2.66" (67,6mm)		3.19" (81mm)	2.95" (75mm)		.43" (11mm)		.14" (3,6mm)		.69" (17,5mm)	1.46" (37mm)	2.48" (63mm)	1.12" (28,5mm)	.55" (14mm)
4"	4.18" (106,2mm)	2.48" (63mm)	5.12" (130mm)	4.65" (118mm)	1.00" (25,5mm)	.91" (23mm)	1.24" (31,5mm)	.22" (5,5mm)	2.22" (56,5mm)	1.55" (39,3mm)	2.70" (68,5mm)	3.86" (98mm)	2.15" (54,5mm)	.87" (22mm)
6"	5.91" (150,2mm)	3.35" (85mm)	7.09" (180mm)	6.61" (168mm)	1.00" (25,5mm)	.91" (23mm)	1.24" (31,5mm)	.22" (5,5mm)	2.22" (56,5mm)	1.55" (39,3mm)	2.70" (68,5mm)	5.59" (142mm)	2.15" (54,5mm)	.87" (22mm)



Tel-Tru Manufacturing Company  
 408 St. Paul Street, Rochester, New York 14605 USA  
 Phone: 585.232.1440 • 800.232.5335 • Fax: 585.232.3857 • E-mail: info@teltru.com • Web: www.teltru.com

► HOW TO ORDER:

To Build A Part Number: Select one code from each column to build your gauge.

DIAL	MODEL CODE	TUBE & SOCKET	CASE	CONN. SIZE	CONN. LOCATION	CONN. TYPE	RANGE & SCALE	OPTIONS
2-1/2"	<b>25 30</b>	<b>S</b> = 316SS <b>M</b> = Monel	<b>S</b> = Stainless Steel	<b>4</b> = 1/4"	<b>L</b> = Lower <b>C</b> = Center Back	<b>1</b> = NPT <b>2</b> = BSPT <b>3</b> = BSP straight	See Range Chart (Up to range of 10,000 psi)	<b>E</b> = Back Flange <b>F</b> = Front Flange* <b>G</b> = Glycerine Fill <b>R</b> = Restrictor <b>S</b> = Silicone Fill U-Clamp ** (sold separately) Oxygen Cleaning ***
4"	<b>40 30</b>	<b>S</b> = 316SS <b>M</b> = Monel	<b>S</b> = Stainless Steel	<b>2</b> = 1/2" <b>4</b> = 1/4"	<b>L</b> = Lower <b>B</b> = Lower Back	<b>1</b> = NPT <b>2</b> = BSPT <b>3</b> = BSP straight	See Range Chart	<b>D</b> = Drag Pointer <b>E</b> = Back Flange <b>F</b> = Front Flange* <b>G</b> = Glycerine Fill <b>R</b> = Restrictor <b>S</b> = Silicone Fill <b>V</b> = U-Clamp Oxygen Cleaning ***
6"	<b>60 30</b>	<b>S</b> = 316SS <b>M</b> = Monel	<b>S</b> = Stainless Steel	<b>2</b> = 1/2" <b>4</b> = 1/4"	<b>L</b> = Lower <b>B</b> = Lower Back	<b>1</b> = NPT <b>2</b> = BSPT <b>3</b> = BSP straight	See Range Chart	<b>E</b> = Back Flange <b>F</b> = Front Flange* <b>G</b> = Glycerine Fill <b>S</b> = Silicone Fill <b>R</b> = Restrictor Oxygen Cleaning ***

\* Front Flange available on Back Mount only  
 \*\* U-clamp on 2-1/2" dial is sold separately. Order part number 95-1701  
 \*\*\* Oxygen cleaning is sold separately. Order part number 10000006.

Example:

**Specs:** 2-1/2", Model 30, 316SS, 1/4" Lower, NPT, 0-1500 psi, Glycerine

<b>Select:</b>	25 30	S	S	4	L	1	H2A	G
----------------	-------	---	---	---	---	---	-----	---

**Ordering Format:** 2530SS4L1H2AG

► STANDARD RANGES:

CODE = RANGE (psi)	INTERVALS (Hg) (psi)	DIVISIONS (Hg) (psi)
<b>V1K</b> = 30" Hg	5"	.2"
<b>Z1A</b> = 30-0-15	5" 5	.5" .2
<b>Z2A</b> = 30-0-30	5" 5	1" .5
<b>Z3A</b> = 30-0-60	10" 10	1" 1
<b>Z4A</b> = 30-0-100	30" 10	5" 2
<b>Z5A</b> = 30-0-160	30" 20	5" 2
<b>Z6A</b> = 30-0-200	30" 20	5" 2

CODE = RANGE (psi)	INTERVALS (psi)	DIVISIONS (psi)
<b>B7A</b> = 0-15	3	.1
<b>C6A</b> = 0-30	5	.2
<b>D6A</b> = 0-60	10	.5
<b>D9A</b> = 0-100	10	1
<b>E4A</b> = 0-160	20	2
<b>E5A</b> = 0-200	20	2
<b>E8A</b> = 0-300	50	2
<b>F2A</b> = 0-400	50	5
<b>F4A</b> = 0-600	100	5
<b>F7A</b> = 0-800	100	10

CODE = RANGE (psi)	INTERVALS (psi)	DIVISIONS (psi)
<b>F8A</b> = 0-1000	100	10
<b>H2A</b> = 0-1500	300	10
<b>H5A</b> = 0-2000	200	20
<b>H9A</b> = 0-3000	500	20
<b>J4A</b> = 0-4000	500	50
<b>J8A</b> = 0-5000	500	50
<b>K4A</b> = 0-10,000	1000	100
<b>K7A</b> = 0-15,000	3000	100

NOTE: INTERVALS AND DIVISION BASED ON 4" DIAL SIZE. CONTACT FACTORY TO REQUEST INFORMATION ON OTHER DIAL SIZES.  
 NOTE: ABOVE 15,000 PSI AVAILABLE ONLY WITH 1/2" BSP STRAIGHT CONNECTION (G<sup>1/2</sup>).  
 NOTE: OTHER RANGES AND SCALES AVAILABLE. CONSULT FACTORY.

# MODEL 31

## 1% SOLID FRONT STAINLESS STEEL PRESSURE GAUGES DRY OR LIQUID FILLED

*Solid front, blowout back, field fillable model, designed for the rugged applications of the process and power industries.*



### SPECIFICATIONS:

Dial Size:	4" (100mm)
Accuracy:	±1% FS - ANSI Grade 1A
Case:	304SS
Bezel:	304SS Bayonet Lock Type
Socket:	316SS or Monel
Bourdon Tube:	316SS or Monel
Movement:	316SS with Overload/Underload Stops
Lens:	Laminated Safety Glass
Pointer:	Friction Adjustable
Dial:	Heavy Gage Aluminum
Connection:	4" - 1/4" NPT or 1/2" NPT Lower (Fully Welded)
Range:	See Range Chart
Scales:	psi (metric available)
Blow Out Back:	Standard
Protection Standard:	IP65 in accordance with NF EN 60529

### ► AVAILABLE OPTIONS:

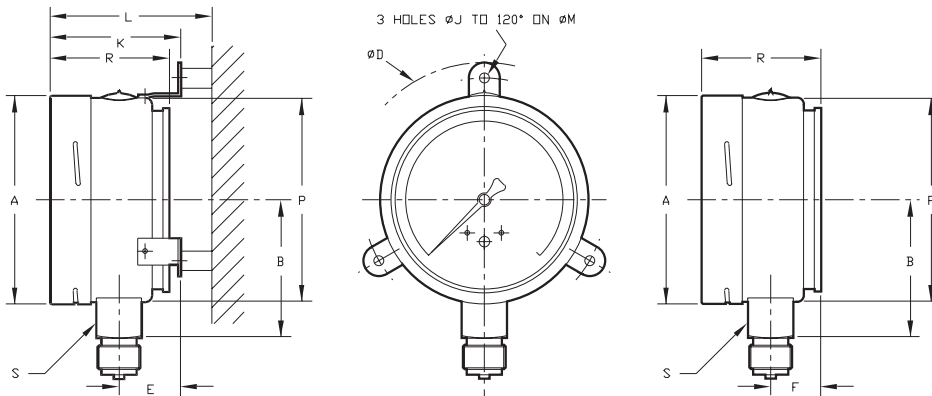
- Fill (Glycerine Standard) • Oxygen Cleaning (dry only)
- Other Fluids Available
- Back Flange
- Restrictor

### MODEL CODES:

Model 31S	316SS Tube and Socket
Model 31M	Monel Tube and Socket

Estimated Shipping Weights		
DIAL SIZE	DRY	FILLED
4"	1 lb. 8 oz.	2 lbs. 4 oz.

### ► AVAILABLE CASE STYLES AND DIMENSIONS:



DIAL	A	B	D	E	F	J	K	L	M	P	R	S
4"	3.98" (101mm)	2.64" (67mm)	5.24" (133mm)	1.18" (30mm)	.96" (24.5mm)	.19" (4.8mm)	2.50" (63mm)	3.09" (78.5mm)	4.65" (118mm)	3.9" (99mm)	2.28" (58mm)	.87" (22mm)



Tel-Tru Manufacturing Company  
 408 St. Paul Street, Rochester, New York 14605 USA  
 Phone: 585.232.1440 • 800.232.5335 • Fax: 585.232.3857 • E-mail: info@teltru.com • Web: www.teltru.com

► HOW TO ORDER:

To Build A Part Number: Select one code from each column to build your gauge.

DIAL	MODEL CODE	TUBE & SOCKET	CASE	CONN. SIZE	CONN. LOCATION	CONN. TYPE	RANGE & SCALE	OPTIONS
4"	4031	S = 316SS M = Monel	S = Stainless Steel	2 = 1/2" 4 = 1/4"	L = Lower	1 = NPT 2 = BSPT 3 = BSP straight	See Range Chart	E = Back Flange G = Glycerine Fill R = Restrictor S = Silicone Fill Oxygen Cleaning *

\* Oxygen cleaning is sold separately. Order part number 10000006.

Example:

**Specs:** 4", Model 31, 316SS, 1/4" Lower, NPT, 0-1500 psi, Glycerine

**Select:**

40 31	S	S	4	L	1	H2A	G
-------	---	---	---	---	---	-----	---

**Ordering Format:** 4031SS4L1H2AG

► STANDARD RANGES:

CODE = RANGE (psi)	INTERVALS (Hg) (psi)	DIVISIONS (Hg) (psi)
V1K = 30" Hg	5"	.5"
Z1A = 30-0-15	5" 3	1" .5
Z2A = 30-0-30	10" 5	1" .5
Z3A = 30-0-60	10" 10	2" 1
Z4A = 30-0-100	30" 10	5" 2
Z5A = 30-0-160	30" 20	5" 2

CODE = RANGE (psi)	INTERVALS (psi)	DIVISIONS (psi)
B7A = 0-15	3	.2
C6A = 0-30	5	.5
D6A = 0-60	10	.5
D9A = 0-100	10	1
E4A = 0-160	20	2
E5A = 0-200	20	2
E8A = 0-300	50	2
F2A = 0-400	50	5
F4A = 0-600	100	5
F7A = 0-800	100	10

CODE = RANGE (psi)	INTERVALS (psi)	DIVISIONS (psi)
F8A = 0-1000	100	10
H2A = 0-1500	200	20
H5A = 0-2000	200	50
H9A = 0-3000	500	50
J4A = 0-4000	500	50
J8A = 0-5000	500	100
K4A = 0-10,000	1000	100
K7A = 0-15,000	3000	100

NOTE: ABOVE 15,000 PSI AVAILABLE ONLY WITH 1/2" BSP STRAIGHT CONNECTION (G'1/2).  
 NOTE: OTHER RANGES AND SCALES AVAILABLE. CONSULT FACTORY.

## MODEL 32

### 1.5% ALL STAINLESS STEEL PRESSURE GAUGES - DRY OR LIQUID FILLED

*Corrosion resistant gauge for general service applications.*



#### SPECIFICATIONS:

Dial Size:	2-1/2"
Accuracy:	1.5% FS - ANSI Grade A
Case:	304SS
Bezel:	304SS Crimped
Socket:	316SS
Bourdon Tube:	316SS
Movement:	316SS
Lens:	Polycarbonate
Pointer:	Aluminum, Non-Adjustable
Dial:	Heavy Gage Aluminum
Connection:	1/4" NPT Lower or Center Back
Range:	See Range Chart
Scales:	psi & bar (kPa = bar x 100)
Protection Standard:	IP65 in accordance with NF EN 60529

#### Estimated Shipping Weights

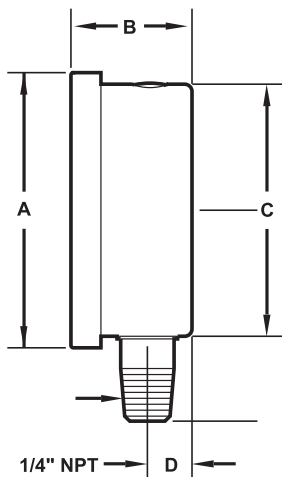
DIAL SIZE	DRY	FILLED
2-1/2"	6 oz.	9 oz.

#### ▶ AVAILABLE OPTIONS:

- Fill (Glycerine Standard)
- Other Fluids Available
- Oxygen Cleaning (dry)
- Restrictor

#### ▶ AVAILABLE CASE STYLES AND DIMENSIONS:

##### LOWER & BACK



DIAL	A	B	C	D
2-1/2"	2.68" (68mm)	1.18" (30mm)	2.47" (63mm)	.41" (10mm)



Tel-Tru Manufacturing Company  
 408 St. Paul Street, Rochester, New York 14605 USA  
 Phone: 585.232.1440 • 800.232.5335 • Fax: 585.232.3857 • E-mail: info@teltru.com • Web: www.teltru.com

► HOW TO ORDER:

To Build A Part Number: Select one code from each column to build your gauge.

DIAL	MODEL CODE	TUBE & SOCKET	CASE	CONN. SIZE	CONN. LOCATION	CONN. TYPE	RANGE & SCALE	OPTIONS
2-1/2"	<b>25 32</b>	<b>S</b> = 316SS	<b>S</b> = Stainless Steel	<b>4</b> = 1/4"	<b>L</b> = Lower <b>C</b> = Center Back*	<b>1</b> = NPT	See Range Chart	<b>G</b> = Glycerine Fill <b>R</b> = Restrictor <b>S</b> = Silicone Fill Oxygen Cleaning **

\* Center Back mount available on special order.  
 \*\* Oxygen cleaning is sold separately. Order part number 10000006.

Example:

**Specs:** 2-1/2", Model 32S, 316SS, 1/4" NPT Lower, 0-160 psi/bar, Glycerine Fill

**Select:**

25 32	S	S	4	L	1	E4F	G
-------	---	---	---	---	---	-----	---

**Ordering Format:** 2532SS4L1E4FG

► STANDARD RANGES:

Note: Dual Scale, psi/bar (KPA = bar x 100)

CODE = RANGE (psi)	INTERVALS (Hg) (psi)	DIVISIONS (Hg) (psi)
<b>V1Z</b> = 30" Hg	5"	.5"
<b>Z1Z</b> = 30-0-15	5" 3	1" .5
<b>Z2Z</b> = 30-0-30	10" 5	1" .5
<b>Z3Z</b> = 30-0-60	10" 10	2" 1

CODE = RANGE (psi)	INTERVALS (psi)	DIVISIONS (psi)
<b>B7F</b> = 0-15	2	.2
<b>C6F</b> = 0-30	5	.5
<b>D6F</b> = 0-60	10	1
<b>D9F</b> = 0-100	10	2
<b>E4F</b> = 0-160	20	2
<b>E5F</b> = 0-200	20	2
<b>E8F</b> = 0-300	50	5
<b>F2F</b> = 0-400	50	5
<b>F4F</b> = 0-600	100	20

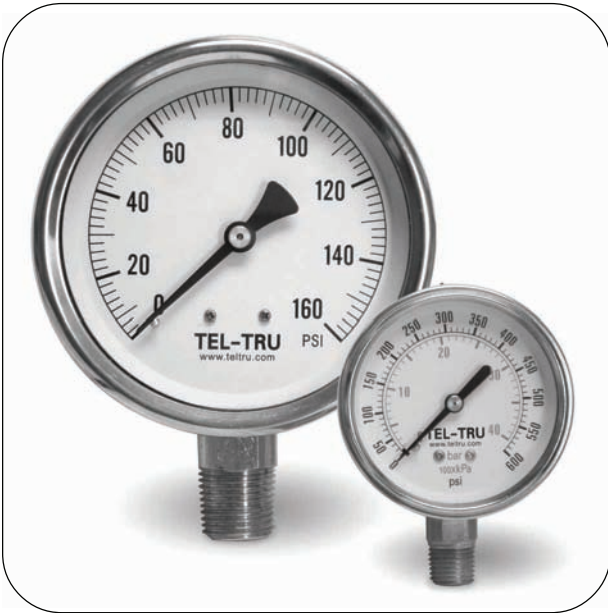
CODE = RANGE (psi)	INTERVALS (psi)	DIVISIONS (psi)
<b>F8F</b> = 0-1000	100	10
<b>H2F</b> = 0-1500	200	20
<b>H5F</b> = 0-2000	200	50
<b>H9F</b> = 0-3000	500	50
<b>J8F</b> = 0-5000	500	100
<b>K4F</b> = 0-10,000	1000	100



# MODEL 33

## INDUSTRIAL/HYDRAULIC PRESSURE GAUGES-DRY OR LIQUID FILLED

*Typically used in OEM applications.*



### SPECIFICATIONS:

Dial Size:	1-1/2", 2", 2-1/2" or 4"
Accuracy:	±3-2-3% ANSI Grade B ±2-1-2% ANSI Grade A (4" SS only)
Case:	304SS
Bezel:	304SS Crimped
Socket:	Brass or 316SS
Bourdon Tube:	Brass or 316SS
Movement:	Brass or 316SS
Lens:	Polycarbonate
Pointer:	Aluminum
Dial:	Heavy Gage Aluminum
Connection:	See <i>How To Order Chart</i>
Restrictor:	Brass only
Range:	See <i>Range Chart</i>
Scales:	See <i>Range Chart</i>

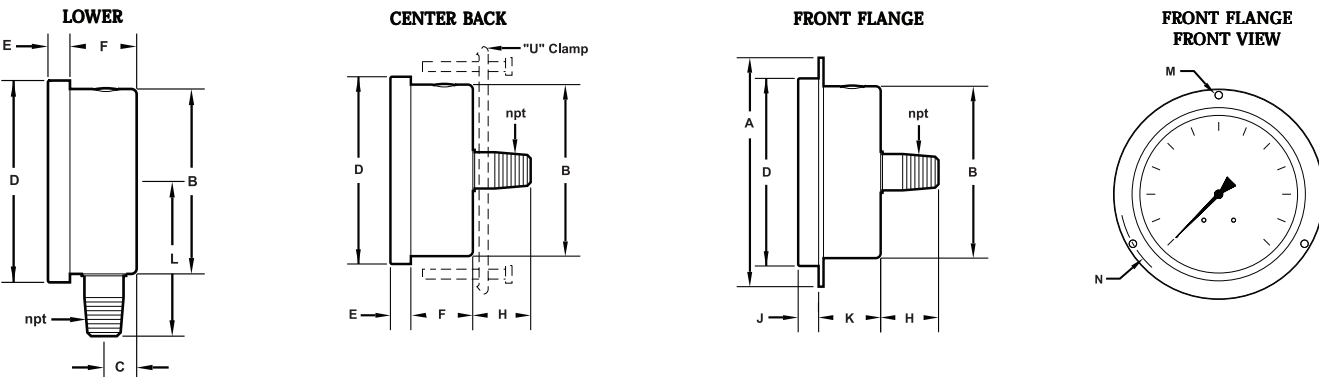
### ▶ AVAILABLE OPTIONS:

- Fill
- U-Clamp
- Front Flange (sold separately)
- Restrictor (SS)

**Note:** U-Clamp and Front Flange NOT available on 4"

Estimated Shipping Weights		
DIAL SIZE	DRY	FILLED
1-1/2"	4 oz.	5 oz.
2"	4 oz.	6 oz.
2-1/2"	5 oz.	9 oz.
4"	1 lb. 3 oz.	2 lbs.

### ▶ AVAILABLE CASE STYLES AND DIMENSIONS:



DIAL	A	B	C	D	E	F	H	J	K	L	M	N
1-1/2"	2.42" (62mm)	1.61" (41mm)	.34" (9mm)	1.77" (45mm)	.21" (5mm)	.79" (20mm)	.73" (19mm)	.21" (5mm)	.80" (20mm)	1.50" (38mm)	.14" (4mm)	1.97" (50mm)
2"	2.87" (73mm)	2.04" (52mm)	.40" (10mm)	2.21" (56mm)	.20" (5mm)	.90" (23mm)	.95" (24mm)	.19" (5mm)	.91" (23mm)	1.93" (49mm)	.14" (4mm)	2.44" (62mm)
2-1/2"	3.43" (87mm)	2.47" (63mm)	.41" (10mm)	2.68" (68mm)	.24" (6mm)	.94" (24mm)	.87" (22mm)	.18" (5mm)	1.00" (25mm)	2.20" (56mm)	.14" (4mm)	2.99" (76mm)
4"	5.12" (130mm)	3.88" (99mm)	.47" (12mm)	4.29" (109mm)	.30" (8mm)	1.12" (28mm)	1.38" (35mm)	.37" (9mm)	1.05" (27mm)	3.14" (80mm)	.17" (4mm)	4.57" (116mm)



Tel-Tru Manufacturing Company  
 408 St. Paul Street, Rochester, New York 14605 USA  
 Phone: 585.232.1440 • 800.232.5335 • Fax: 585.232.3857 • E-mail: info@teltru.com • Web: www.teltru.com

► HOW TO ORDER:

To Build A Part Number: Select one code from each column to build your gauge.

DIAL	MODEL CODE	TUBE & SOCKET	CASE	CONN. SIZE	CONN. LOCATION	CONN. TYPE	RANGE & SCALE	OPTIONS
1-1/2"	15 33	B = Brass S = SS	S = Stainless Steel	1 = 1/8"	L = Lower C = Center Back	1 = NPT	See Range Chart	Front Flange* T = Dry (No Fill) G = Glycerine Fill S = Silicone fill
2"	20 33	B = Brass S = SS	S = Stainless Steel	4 = 1/4"	L = Lower C = Center Back	1 = NPT	See Range Chart	Front Flange* T = Dry (No Fill) G = Glycerine Fill S = Silicone fill
2-1/2"	25 33	B = Brass S = SS	S = Stainless Steel	4 = 1/4"	L = Lower C = Center Back	1 = NPT	See Range Chart	Front Flange* U-Clamp** (sold separately) T = Dry (No Fill) G = Glycerine Fill S = Silicone fill
4"	40 33	B = Brass	S = Stainless Steel	4 = 1/4"	L = Lower	1 = NPT	See Range Chart	T = Dry (No Fill) G = Glycerine Fill S = Silicone fill
		S = SS	S = Stainless Steel	2 = 1/2"				

\* Front Flange available on Back Mount only. When ordering specify part number 1-1/2" = 95-1726, 2" = 95-1727, or 2-1/2" = 95-1728

\*\* U-clamp on 2-1/2" dial is sold separately. Order part number 95-1701

Example:

**Specs:** 2-1/2", Model 33B, Brass, 1/4"Center Back, NPT, 0-60 psi/bar, Dry (no fill) and with Front Flange

**Select:**

25 33	B	S	4	C	1	D6F	T
-------	---	---	---	---	---	-----	---

**Ordering Format:** 2533BS4C1D6FT and 95-1728

► 33B STANDARD RANGES:

Note--Dual Scale: psi/bar/kpa

CODE = RANGE (psi)	INTERVALS (Hg) (psi)	DIVISIONS (Hg) (psi)
V1Z = 30" Hg	5"	.5"
Z2Z = 30-0-30	10" 5	1" .5
Z3Z = 30-0-60	10" 10	2" 1
Z4Z = 30-0-100	30" 10	2" 2
Z5Z = 30-0-160	30" 20	10" 5

CODE = RANGE (psi)	INTERVALS (psi)	DIVISIONS (psi)
B7F = 0-15	2	.2
C6F = 0-30	3	.5
D6F = 0-60	5	1
D9F = 0-100	10	1
E4F = 0-160	20	2
E5F = 0-200	20	2
E8F = 0-300	30	5
F2F = 0-400	50	5
F4F = 0-600	50	10

CODE = RANGE (psi)	INTERVALS (psi)	DIVISIONS (psi)
F8F = 0-1000	100	10
H2F = 0-1500	200	20
H5F = 0-2000	200	20
H9F = 0-3000	300	100
J8F = 0-5000	500	100

► 33S STANDARD RANGES:

Note--Single Scale: psi

CODE = RANGE (psi)	INTERVALS (Hg) (psi)	DIVISIONS (Hg) (psi)
V1A = 30" Hg	5"	.5"
Z2A = 30-0-30	10" 5	1" .5
Z3A = 30-0-60	10" 10	2" 1
Z4A = 30-0-100	30" 10	2" 2
Z5A = 30-0-160	30" 20	10" 5
Z6A = 30-0-200	30" 20	10" 5
Z7A = 30-0-300	30" 30	10" 5

CODE = RANGE (psi)	INTERVALS (psi)	DIVISIONS (psi)
B7A = 0-15	2	.2
C6A = 0-30	5	.5
D6A = 0-60	10	1
D9A = 0-100	10	2
E4A = 0-160	20	2
E5A = 0-200	20	2
E8A = 0-300	50	5
F2A = 0-400	50	5
F4A = 0-600	100	10

CODE = RANGE (psi)	INTERVALS (psi)	DIVISIONS (psi)
F8A = 0-1000	100	20
H2A = 0-1500	300	20
H5A = 0-2000	200	20
H9A = 0-3000	500	50
J8A = 0-5000	1000	100
K1A = 0-6000	1000	100
K2A = 0-7500	1500	100
K4A = 0-10,000	1000	200

IMPORTANT NOTES:

- Intervals and division based on 4" dial size--SPECS MAY VARY.
- Other ranges available, minimum quantities required.