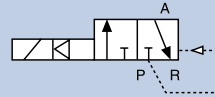


# Servo-Assisted 3/2 Way Solenoid Valve with Isolated Pilot

0340

## NPT 1/4" - NPT 1", 7-232 PSI

- Servo-Piston for large flow rates
- Pivoted armature isolated pilot
- Manual override as standard



Shown with 2508 plug

Servo-assisted 3/2 way normally closed and normally open solenoid valve with a pivoted armature and isolating diaphragm. This series encompasses a range of diaphragms, sealing materials and electrical connections. Perfect for pneumatic actuation of very large process valves.

### Technical Data

<b>Pressure range</b>	7-232 PSI, Max.
<b>Temperature media</b>	32 °F ... +194 °F
<b>Ambient temperature</b>	131 °F, Max.
<b>Body material</b>	Brass
<b>Seal material</b>	NBR
<b>Coil material</b>	Epoxy
<b>Power consumption</b>	DC: 8 W, AC: 30 VA (inrush), 15 VA (hold)
<b>Protection class</b>	IP65, NEMA 4
<b>Electrical Connection</b>	2509 cable plug Form A (included)
<b>Accreditations</b>	UL, CSA, CE
<b>Extras</b>	Manual override as standard

### Options

- Electrical position feedback
- Impulse coil
- Range of diaphragm seals to suit difficult media
- Cables plug with LED
- Cable plug with varistor
- Class 1, Div 2 FM & CSA

### Envelope Dimensions [inch] (see datasheet for details)

2509 cable plug Form A included (see page 30)

Size	A	B	C
1/4"	2.56	1.30	6.08
3/8"	2.99	1.30	7.07
1/2"	2.99	1.30	7.07
3/4"	3.54	2.05	8.48
1"	4.33	2.36	9.35

### Ordering Chart

Port connection [inch]	Orifice [mm]	Cv	Pressure range [PSI]	Item no. Voltage/Frequency [V/Hz]		
				24 V DC	24 V/60 Hz	120 V/60 Hz
<b>Circuit function C</b>						
NPT 1/4	8	1.1	7-232	453 286	–	98101599
NPT 3/8	12	2.7	7-232	–	–	453 378
NPT 1/2	12	3.0	7-232	453 290	453 291	453 292
NPT 3/4	20	7.7	7-232	98100981	464 358	453 296
NPT 1	25	11.7	7-232	461 657	–	453 300
<b>Circuit function D</b>						
NPT 3/8	12	2.7	7-232	–	–	454 091
NPT 1/2	12	3.0	7-232	453 310	–	453 312