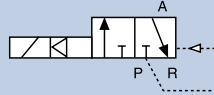
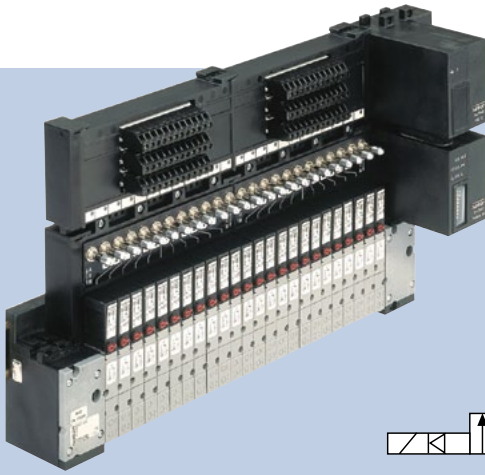


Pneumatic Solenoid Valve Island for Panel Mounting



5/2, 3/2 way or 5/2 way valves, bus or conventional communication

- Simple to configure and use
- DIN rail mounted
- DeviceNet or Profibus compatible



8640

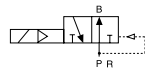
This process valve island offers many combinations of valve function together with fieldbus connectivity in an extremely compact envelope.

Technical Data

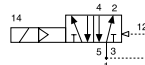
Body material	PA (polyamide)
Seal material	FKM, NBR
Media	Lubricated and non-lubricated dry air, neutral gases (5 µm-Filter)
Manual override	Yes
Voltage 24 V DC	24 V DC
Nominal power	2 x 1 W
Duty cycle	Continuous operation (100% ED)
Cv	0.28 / QNn = 300l/min
Pilot method	Flipper pilot
Circuit function	C 3/2 way normally closed
Pressure range	36.25 - 145 PSI
Orifice size	4 mm
Pneumatic outlet	Push in 1/4" tube

Options

- Further valves
- Further input/output slots
- Circuit function D (normally open 3/2 way valves)



- Circuit function H (5/2 way valves)



- 16mm wide valves with Cv of 0.64 / 600l/min
- Cover plates for open slots
- Fully installed in one piece cabinet
- RIO Interface to allow hundreds of valves and feedbacks on one bus node



Ordering Chart

Communication	Item no. 16 valves (8 x (2 x 3/2 way))	Item no. 24 valves (12 x (2 x 3/2 way))
Individually wired (common ground)	217 928	217 934
Multipole 25 pin connector	217 930	217 935
DeviceNet	217 931	217 936
Profibus DPV 1	217 932	217 937

This chart shows only 8 simple configurations. The 8640 can be configured in a vast array of possibilities. Please visit the website for the configurators or call our experienced technical support.