

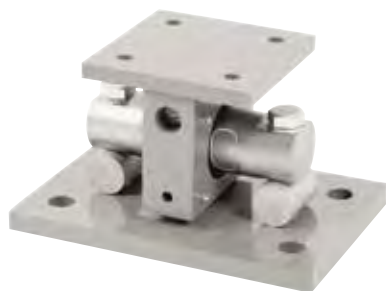
EZ Mount 1

Stainless Steel Weigh Modules, Rice Lake Weighing Systems



Available in configurations with three or four mounting assemblies.
Picture is a representation of actual product

The EZ Mount 1 Series weigh module utilizes the double-ended beam design with an articulating top plate to provide superior accuracy in any loading condition. The double-ended beam design means there is less cumbersome hardware and each module has a lower profile than modules of different configurations. FM approved RL70000 SS Series load cells give you accuracy and dependability in many applications, including intrinsically safe and explosion proof areas.



Module with RL70000 SS double-ended shear beam load cell.

Standard Features

- Capacities (per module): 5,000lb-150,000 lb (2,268 kg-60,039.0 kg)
- Unique sliding pin design compensates for thermal expansion/contraction
- NTEP Certified load cells (10K - 100K)
- Self-checking
- Easy load cell replacement
- Simplified design allows bolting directly to tank and floor
- Center-loaded, double-ended shear beam design
- Low-profile design
- 304 stainless steel construction

Optional Features

- Kits available with VPG-Revere 9103 load cell, capacities in 5,000 lb-150,000 lb (2268.0 kg-68,039.0 kg)
- Refer to page 681 for shims

Applications

- Medium to heavy-capacity tank and hopper weighing applications

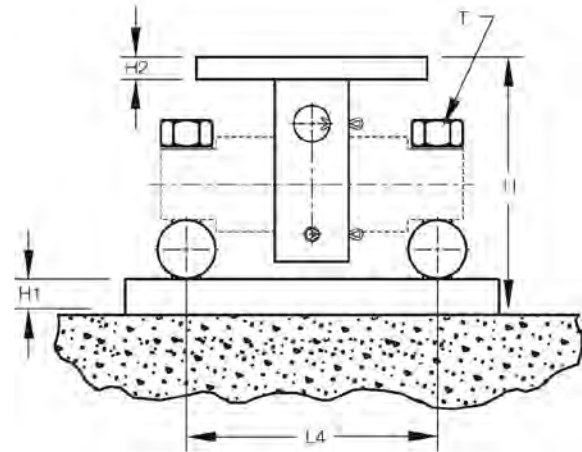
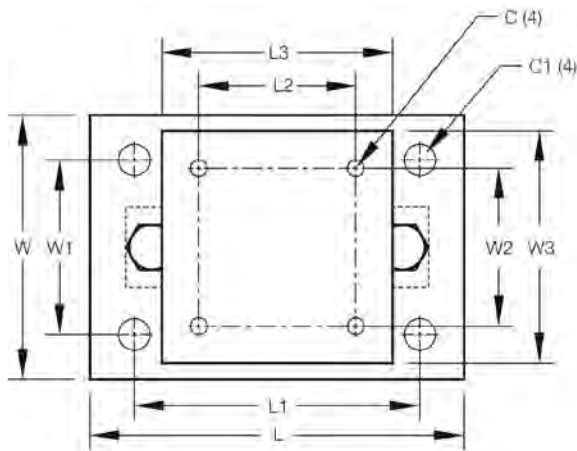
Complete Kit Includes

- One JB4SS NEMA Type 4X stainless steel signal trim junction box
- Three or four EZ Mount 1 stainless steel compression mounts
- Three or four RL70000 SS stainless steel double-ended shear beam load cells
- 25 ft of our hostile environment EL147HE SURVIVOR® load cell cable

Load Cell Certifications



NTEP Excluding
5K and 150K

**Dimensions**

Rated Capacity	C	C1	H	H1	H2	L	L1	L2	L3	L4	T	W	W1	W2	W3
lb/in															
5,000-20,000	0.56	1.06	5.31	0.75	0.50	11.00	8.00	3.00	6.00	6.87	5/8-18 UNF	7.50	4.00	3.00	6.00
30,000-60,000	0.68	1.19	8.43	1.00	0.75	15.00	11.50	5.12	8.00	8.50	1-14 UNS	10.00	6.00	5.12	8.00
100,000	0.81	1.38	10.37	1.25	1.25	18.00	14.00	7.50	10.00	9.50	1-14 UNS	12.00	9.00	7.50	10.00
150,000	0.81	1.38	10.37	1.25	1.25	18.00	14.00	7.50	10.00	9.50	1-14 UNS	12.00	9.00	7.50	10.00
kg/mm															
2,268.0-9,071.9	14.2	26.9	134.9	19.1	12.7	279.4	203.2	76.2	152.4	174.5	5/8-18 UNF	190.5	101.6	76.2	152.4
13,607.8-27,215.5	17.3	30.2	214.1	25.4	19.1	381.0	292.1	130.0	203.2	215.9	1-14 UNS	254.0	152.4	130.1	203.2
45,359.2	20.6	35.1	263.4	31.8	31.8	457.2	355.6	190.5	254.0	241.3	1-14 UNS	304.8	228.6	190.5	254.0
68,039.0	20.6	35.1	263.4	31.8	31.8	457.2	355.6	190.5	254.0	241.3	1-14 UNS	304.8	228.6	190.5	254.0

Order Information

Load Rating (Per Module)	Part#	Price
Single Module (Does NOT Include Load Cell)		
5,000 lb-20,000 lb	2,268.0 kg-9071.9 kg 17943	\$725.00
30,000 lb-60,000 lb	13,607.8 kg-27,215.5 kg 17944	\$1,995.00
100,000 lb	45,359.2 kg 17945	\$3,695.00
150,000 lb	68,039.0 kg 29011	\$3,695.00
3-Module Kit		
5,000 lb*	2,268.0 kg 36195	\$4,325.00
10,000 lb	4,535.9 kg 36196	\$4,325.00
20,000 lb	9,071.9 kg 36197	\$4,325.00
30,000 lb	13,607.8 kg 36198	\$8,295.00
40,000 lb	18,143.7 kg 36199	\$8,295.00
50,000 lb	22,679.6 kg 36200	\$8,395.00
60,000 lb	27,215.5 kg 36201	\$8,395.00
100,000 lb**	45,359.2 kg 36202	\$13,295.00
150,000 lb*	68,039.0 kg 43288	\$13,295.00

* Non-NTEP Certified

**Load cell bolts protrude from bottom of base plate 0.25 in
Shims located on page 681**Order Information**

Load Rating (Per Module)	Part#	Price
4-Module Kit		
5,000 lb*	2,268.0 kg 36203	\$5,800.00
10,000 lb	4,535.9 kg 36204	\$5,800.00
20,000 lb	9,071.9 kg 36205	\$5,800.00
30,000 lb	13,607.8 kg 36206	\$11,275.00
40,000 lb	18,143.7 kg 36207	\$11,275.00
50,000 lb	22,679.6 kg 36208	\$11,550.00
60,000 lb	27,215.5 kg 36209	\$11,550.00
100,000 lb**	45,359.2 kg 36210	\$17,650.00
150,000 lb*	68,039.0 kg 43289	\$17,650.00
Dummy Load Cells (Mild Steel)		
5,000 lb-20,000 lb	—	33749 \$75.00
30,000 lb-60,000 lb	—	74016 \$95.00
100,000 lb	—	94175 \$150.00
150,000 lb	—	158715 \$225.00
Grounding Kit		
5,000 lb-60,000 lb	126419	\$15.45

Includes ground strap and mounting hardware per mount