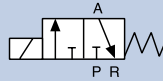


# Heavy Duty 3/2 Way Pilot Valve Blocks

## NPT 1/4", 0-145 PSI

- Extremely rugged
- Slip over coil design
- Manual override



Shown with 2508 plugs

Plug and play, pre-assembled and tested manifold solutions featuring our direct-acting 3/2 way normally closed solenoid valve. The valves are plunger operated and designed to work in process environments with double FKM seals and a strong 32mm coil. These small flexible systems are engineered specifically for process compressed air however Bürkert specializes in custom manifolds to suit any fluid purpose from 0.05mm to 4".

### Technical Data

<b>Pressure range</b>	0-145 PSI, Max.
<b>Temperature media</b>	14 °F ... +212 °F
<b>Ambient temperature</b>	131 °F, Max.
<b>Manual override</b>	Yes
<b>Body material</b>	Brass
<b>Manifold material</b>	Anodized aluminum
<b>Connections</b>	NPT 1/4"
<b>Valves</b>	24 VDC (456 634) or 120 VAC (456 636)
<b>Orifice</b>	2 mm
<b>Cv</b>	0.13
<b>Seal material</b>	FKM
<b>Coil material</b>	Epoxy
<b>Power consumption</b>	DC: 8 W, AC: 24 VA (inrush), 17 VA (hold)
<b>Protection class</b>	IP65, NEMA 4
<b>Electrical Connection</b>	2509 Cable plug Form A (included)
<b>Accreditations</b>	UL Listed, FM Class 1, Div 2, CSA, CE

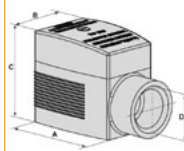
### Options

- Manifolds of many engineering materials
- Intrinsically safe range (1 option shown in table as example)

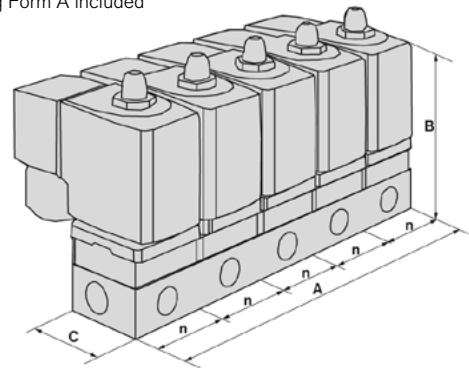
### Ordering Chart for manifold mount valves

Voltage	Item no. standard	Item no. with manual override
24 VDC	456 626	456 634
120 VAC	456 628	456 636

### Envelope Dimensions [inch] (see datasheet for details)



2509 cable plug Form A included (see page 30)



No. of blocks	A	B	C
2	2.56	1.77	3.30
3	3.86	1.77	3.30
4	5.16	1.77	3.30
5	6.46	1.77	3.30
6	7.76	1.77	3.30
7	9.06	1.77	3.30
8	10.35	1.77	3.30
9	11.65	1.77	3.30
10	12.95	1.77	3.30

### Ordering Chart for manifold

Positions	Item no.
2	006 104
3	613 828
4	006 106
5	613 829
6	613 598
8	613 831
10	613 833