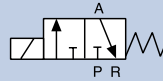


Pivot Operated 3/2 Way Solenoid Valve

0330

NPT 1/4", 0-174 PSI

- Isolating separating diaphragm design
- Long service life
- Handles slightly contaminated fluids with ease



Shown in brass with 2508 plug (stainless steel version available)

Direct-acting 3/2 way normally closed and normally open solenoid valves with pivoted armature and isolating diaphragm. This flexible valve series includes many options, various body materials, diaphragm and sealing materials and a range of electrical connections to suit many applications.

Technical Data

Pressure range	0-174 PSI, Max.
Temperature media	+32 °F ... +194 °F
Ambient temperature	131 °F, Max.
Body material	Brass (Stainless steel available)
Seal material	FKM
Coil material	Epoxy
Power consumption	DC: 8 W, AC: 30 VA (inrush), 15 VA (hold)
Protection class	IP65, NEMA 4
Electrical Connection	2509 cable plug Form A (included)
Accreditations	UL Listed, FM Class 1, Div 2, CSA, CE
Extras	Manual override as standard

Envelope Dimensions [inch] (see datasheet for details)

Size	A	B	C
1/4"	1.81	1.34	3.94

Options

- Stainless steel body
- Electrical position feedback
- Impulse coil
- Range of diaphragm seals to suit aggressive media
- Vacuum version
- Cable plug with conduit entry (2509)
- Cables plug with LED
- Cable plug with varistor
- Manifold mounting (Type 0331)
- Universal function (T - Class 1, Div 2 FM & CSA)

Ordering Chart

Port connection [inch]	Orifice [mm]	Cv	Pressure range ¹⁾		Voltage/Frequency [V/Hz]			
			AC [PSI]	DC [PSI]	24/DC	24/60	120/60	240/60
Normally closed 3 way configuration								
NPT 1/4	2	0.13	0-174	0-174	98104311	98106017	453 226	453 228
NPT 1/4	3	0.27	0-145	0-145	453 020	453 019	453 018	98100331
Normally open 3 way configuration								
NPT 1/4	2	0.13	0-174	0-174	453 242	98106022	453 246	98106023
NPT 1/4	3	0.27	0-145	0-145	453 023	453 022	453 021	98106027

¹⁾ Pressure range for DC valves is 25% less than stated in the table.