

880/880 Plus Performance™ Series

Digital Weight Indicator/Controller

Part Number/Price

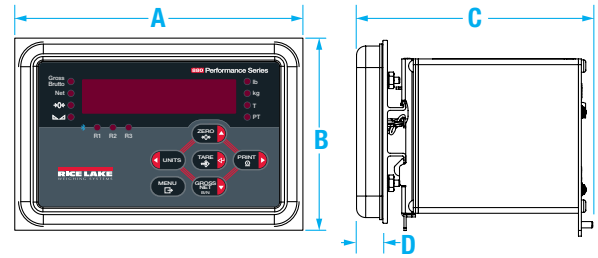
Part #	Description	Est. Weight	Price
880 Panel Mount AC Powered*			
151674	Display only	2 lb	\$315.00
177977	115-230VAC, controller only	4 lb	\$775.00
177976	115-230VAC	4 lb	\$1,050.00
177979	115-230VAC with analog output	4 lb	\$1,350.00
177980	115-230VAC with relay board	4 lb	\$1,350.00
177982	115-230VAC with EtherNet/IP	4 lb	\$1,600.00
177983	115-230VAC with ProfiNet	4 lb	\$1,600.00
177984	115-230VAC with Modbus/TCP	4 lb	\$1,600.00
177985	115-230VAC with Profibus DP	4 lb	\$1,600.00
177986	115-230VAC with DeviceNet	4 lb	\$1,600.00
179155	115-230VAC with EtherCAT	4 lb	\$1,600.00
880 Panel Mount DC Powered*			
177987	12-24 VDC	4 lb	\$1,150.00
177988	12-24 VDC controller only	4 lb	\$875.00
880 Plus Universal AC Powered			
177989 ^f	115 VAC	8 lb	\$1,275.00
178496 ^f	115 VAC, with analog	8 lb	\$1,575.00
178499 ^f	115 VAC, with relay board	8 lb	\$1,575.00
179147 ^f	115 VAC with EtherNet/IP	8 lb	\$1,825.00
179148 ^f	115 VAC with Profinet	8 lb	\$1,825.00
179149 ^f	115 VAC with Modbus/TCP	8 lb	\$1,825.00
179150 ^f	115 VAC with Profibus	8 lb	\$1,825.00
179152 ^f	115 VAC with DeviceNet	8 lb	\$1,825.00
179154 ^f	115 VAC with EtherCAT	8 lb	\$1,825.00
177990 ^{††}	115-230VAC	8 lb	\$1,275.00
178497 ^{††}	115-230VAC with analog	8 lb	\$1,575.00
178500 ^{††}	115-230VAC, with relay board	8 lb	\$1,575.00
880 Plus Universal DC Powered			
178495	12-24 VDC	8 lb	\$1,375.00

*Power cable not included



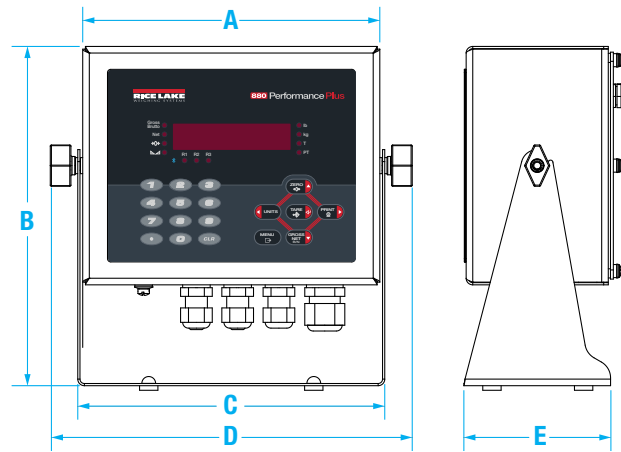
Options/Accessories

Part #	Description	Price
Option Cards (5.5 in CPU only)		
179156	Analog output, 0-10 VDC, 0-20 mA, 4-20 mA	\$300.00
179157	Relay board, four dry contact outputs	\$300.00
Network Cards		
179158	EtherCAT interface	\$550.00
179159	EtherNet/IP® interface	\$550.00
179160	ProfiNet™ interface	\$550.00
179161	Modbus/TCP® interface	\$550.00
179162	DeviceNet™ interface	\$550.00
179163	Profibus DP interface	\$550.00
Hardware		
153660	Metrological sealing kit	\$10.00
158404	Adapter plate for IQ310 and 520 replacement	\$60.00
101923	Relay box enclosure, does not include relay	\$235.00
177850	Panel mount kit for universal enclosure	\$150.00
180835	Backplate with RJ-45 receptacle	\$90.00
15436	Power cord, pigtail with US NEMA 5-15 plug	\$17.00
105382	Power cord, pigtail with Euro Plug CEE 7/7	\$17.00



880 Panel Mount Dimensions

A	6.0 in (152 mm)	C	4.95 in (126 mm)
B	4.0 in (102 mm)	D	0.58 in (14 mm) BEZEL DEPTH



880 Universal Dimensions

A	8.10 in (206 mm)	D	9.87 in (248 mm)
B	9.38 in (235 mm)	E	4.0 in (102 mm)
C	8.37 in (213 mm)		

Options/Accessories

Part #	Description	Price
Cables		
152434	Cable, USB A to micro A shielded, 2 meters	\$15.00
156817	Cable, Ethernet TCP/IP CAT.5E shielded RoHS compliant blue RJ45 connectors 1 meter	\$30.00
156818	Cable, Ethernet TCP/IP CAT.5E shielded RoHS compliant blue RJ45 connectors 3 meters	\$37.00
156821	Cable, Ethernet TCP/IP CAT.5E shielded RoHS compliant blue RJ45 connectors 5 meters	\$45.00
Manuals and Software		
77925	Revolution™ scale software	\$35.00
152240	Operators manual	\$25.00
158387	Technical manual	\$25.00
Primary Component Parts (5.5 in CPU only)		
131740	Overlay, panel mount, six-key	\$55.00
163986	Overlay, universal with numeric keypad	\$65.00
131598	Display board	\$200.00
175603*	Power supply, 100-240VAC	\$175.00
175604*	Power supply, 12-24VDC	\$275.00
175109*	CPU board	\$525.00

* Design change in 2017 to 5.5 in wide controller, see replacement parts catalog for the 5.0 inch wide boards.

1280 Enterprise Series

Programmable Color Touchscreen Weight Indicator/Controller



Standard Features

- Seven-inch, 800 x 480 pixel, graphical color display that adjusts for ambient light conditions
- Twelve-inch, 1280 x 800 pixel, graphical color display that adjusts for ambient light conditions
- Highly customizable graphical user interface
- Three different enclosure types: universal with tilt stand, panel mount and wall mount
- Resistive color touchscreen that can be used with gloves
- On-screen keyboard available during entry mode or use an external keyboard
- Multi-language operation and text entry
- Keypad for scale operations, numeric entry and navigation
- More than 150 built-in functions for programming
- Customize applications and data tables with iRite™ software
- Built-in web server for remote access, systems integration and data monitoring
- Up to eight scales supporting five scale types:
 - Analog load cell scales
 - Total scales
 - Serial scales
 - Program scales
 - iQube2 scales
- Multi-range/interval weighing functions
- Eight digital I/O for control and pulse count
- 100 setpoints, 18 configurable setpoint types
- 22 soft keys with 10 user-defined
- Two RS-232 and RS-485 serial ports
- USB, Ethernet TCP/IP, Wi-Fi Direct(r) and Bluetooth® ports

Options

- Six option slots that support:
 - A/D scale channels
 - Analog Input/Thermocouple
 - Digital input and outputs
 - Analog outputs
 - Serial ports
 - Four channel dry-contact relay
 - Various protocol interfaces

Approvals*



Measurement
Canada
Approved



* Touch-only units
pending approvals

Specifications

Power:

AC voltages: 100-240VAC; 50-60 Hz
DC voltages: 11-30VDC
Consumption: 60W

Excitation Voltage:

10 ± 0.5VDC
16 x 350Ω or 16 x 700Ω load cells per A/D card

Analog Signal Input Range:

-60 mV to 60 mV

Analog Signal Sensitivity:

0.3 μV/graduation minimum at 7.5 Hz–120 Hz
1.0 μV/graduation recommended

A/D Sample Rate:

7.5 to 960 Hz, software selectable

Resolution:

Internal: 8 million counts
Display: 9,999,999

System Linearity

± 0.01% full scale

Digital I/O:

Eight I/O channels on CPU board; optional serial ports:
24-channel I/O expansion boards available

Communication Ports:

Port 1 & 2: Full duplex RS-232 with CTS/RTS, RS-422/485
Baud Rate: 1200 to 115200
Port 3: USB 2.0 Device (Micro)
Port 4: Bluetooth® SPP 2.1+EDR, Standards 4Mbaud
USB Host: (2) Type A Connectors max 500 mA
Ethernet: Wired 10/100 Auto-MDX
Ethernet: Wireless 802.11 b/g/n 2.4GHz

Onboard:

Selectable filters: Three stage, Adaptive or Damping
Embedded Linux® OS
8 GB eMMC (system use)
1 GB DDR3 RAM
460 MB onboard database (SQLite) storage
Up to 32 GB micro SD card (sold separately)

Display:

Seven-inch, 800 x 480 pixel, graphical color TFT display 500 or 1000 NIT
Twelve-inch, 1280 x 800 pixel, graphical color TFT display 1500 NIT

Keys/Buttons:

22-key membrane panel, tactile buttons, on-screen keyboard for text and numeric entry, USB port for flash drive, keyboard and printer

Temperature Range

Certified: 14°F to 104°F (-10°C to 40°C)
Operating: -4°F to 131°F (-20°C to 55°C)

Weight:

Universal enclosure: 11 lb (4.9 kg)
Panel mount enclosure: 8 lb (3.6 kg)
Wall mount enclosure: 23 lb (10.4 kg)
Panel mount 7 in touch-only enclosure: 7 lb (3.1 kg)
Panel mount 12 in touch-only enclosure: 10 lb (4.5 kg)

Rating/Material:

IP66 stainless steel wall enclosure
IP69K stainless steel universal and panel mount door

Warranty:

Two-year limited warranty

EMC Immunity:

EN 50082 Part 2 IEC EN 61000-4-2, 3, 4, 5, 6, 8, and 11

Approvals:

NTEP CC 15-00/Class III/III 10,000d
Measurement Canada AM-5980C,
Class III/III HD 10,000d
OIML R76/2006-NL1-16.04 Class III/III 10,000d
EU Test Certificate TC8596
UL/cUL Listed (universal)
UL/cUL Recognized (panel mount)
CE Marked

1280 Enterprise Series

Programmable Color Touchscreen Weight Indicator/Controller



7-inch model with keypad

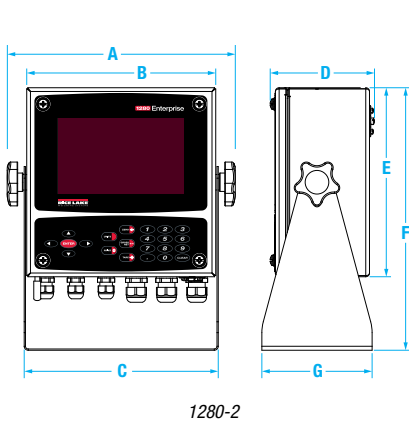


7-inch touch-only model

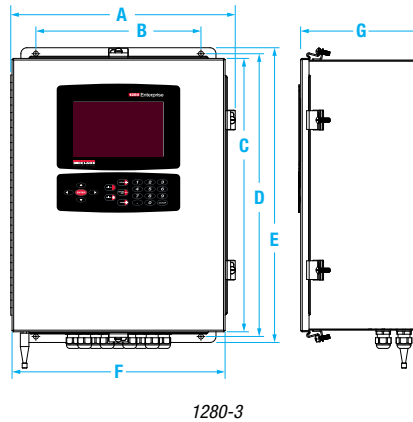


12-inch touch-only model

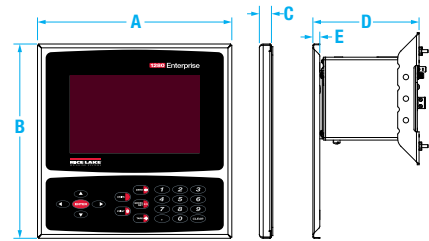
Numeric Keypad Models:



1280-2



1280-3



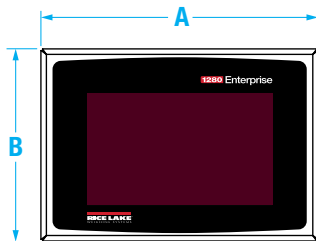
1280-4

Universal (1280-2) Dimensions	
A 10.86 in (276 mm)	B 6.22 in (158 mm)
C 9.24 in (235 mm)	D 4.97 in (126 mm)
E 9.00 in (229 mm)	F 12.50 in (318 mm)
G 5.25 in (133 mm)	

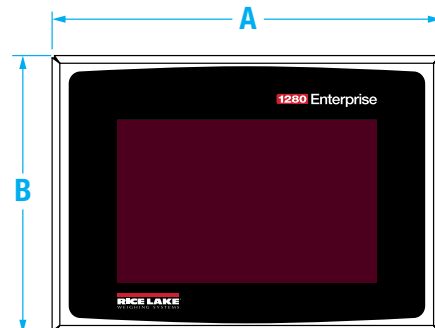
Wall Mount (1280-3) Dimensions	
A 14.92 in (379 mm)	B 11 in (279 mm)
C 18.22 in (463 mm)	D 18.84 in (479 mm)
E 19.64 in (499 mm)	F 14.20 in (361 mm)
G 8.08 in (205 mm)	

Panel Mount (1280-4) Dimensions	
A 9.00 in (229 mm)	B 9.00 in (229 mm)
C 0.58 in (15 mm)	D 5.34 in (136 mm)
E 0.32 in (8 mm)	

Touch-only Models:



1280-5



1280-6

7-inch Touch-only (1280-5) Dimensions	
A 9.00 in (229 mm)	B 6.22 in (158 mm)

12-inch Touch-only (1280-6) Dimensions	
A 14.00 in (356 mm)	B 10 in (254 mm)