

Minebea Intec Combics

Explosion Proof Bench and Floor Platforms

Specifications

Cable Length:

Up to 30 x 30 - 10ft
36 x 36 and over - 20ft

Operating Temperature:

14°F to 104°F

Ingress Protection Rating:

NEMA Type 4/IP67

Indicator Option:

CIXS3-U

Warranty:

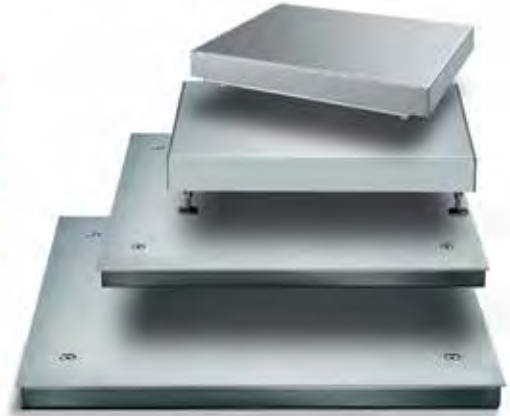
Two-year limited warranty
Accessories: One-year limited warranty

Approvals:

FM approved Classes 1,2,3, Division 1, Groups ABCDE-GFT4, US and Canadian hazardous areas, when used with CIXS3-U or FCT01-X indicator



*GLP/GMP requires use of Combics 1 Plus or higher digital weight indicator



Standard Features

- FM Approved: Classes 1,2,3, Division 1, Groups ABCDEGFT4, US and Canadian hazardous areas, when used with CIX53-U
- Can be used in areas where explosive gas and dust mixtures occur
- Documentation to verify intrinsic safety available upon request
- Completely constructed with AISI 304 stainless steel
- All units are built for easy cleaning and disinfection and meet HACCP and FDA requirements for the food industry
- Load cells are hermetically sealed, IP68 protection rated
- Load cell cables are 10ft (for bases up to 30 x 30 in) or 20ft (for bases 36 x 36 in and larger)
- NEMA Type 4/IP67 protection rated
- Pit frames for flush mounting available
- High resolution 30,000 d

APPROVALS



Applications

- Pharmaceutical, chemical, electronics, food processing, precious metals, metal production and processing
- Regulatory Compliance
- NEMA, HACCP, FDA, GLP/GMP*, FM

Part Number/Price

| RLWS PN | Minebea PN | Dimensions | Height Adjustment | # Load Cells | Capacity | Readability | Capacity | Readability | Est. Weight | Price |
|---------|----------------|------------|-------------------|--------------|----------|-------------|----------|-------------|-------------|------------|
| 100919 | CAPXS1U-10CC | 10 x 10 in | 2.37 in | 1 | 15 lb | 0.0005 | 6 kg | 0.0002 | 16 lb | \$1,055.00 |
| 100920 | CAPXS1U-20CC | 10 x 10 in | 2.37 in | 1 | 30 lb | 0.001 | 15 kg | 0.0005 | 16 lb | \$1,055.00 |
| 100921 | CAPXS1U-50CC | 10 x 10 in | 2.37 in | 1 | 60 lb | 0.002 | 30 kg | 0.001 | 16 lb | \$1,055.00 |
| 100922 | CAPXS1U-50DD | 12 x 12 in | 3.87 in | - | 60 lb | 0.002 | 30 kg | 0.001 | 24 lb | \$1,180.00 |
| 100923 | CAPXS1U-100DD | 12 x 12 in | 3.87 in | 1 | 150 lb | 0.005 | 60 kg | 0.002 | 24 lb | \$1,180.00 |
| 100924 | CAPXS1U-50EE | 18 x 18 in | 3.5 in | 1 | 60 lb | 0.002 | 30 kg | 0.001 | 62 lb | \$1,460.00 |
| 100925 | CAPXS1U-100EE | 18 x 18 in | 3.5 in | 1 | 150 lb | 0.005 | 60 kg | 0.002 | 62 lb | \$1,460.00 |
| 100926 | CAPXS1U-200EE | 18 x 18 in | 3.5 in | 1 | 200 lb | 0.01 | 100 kg | 0.005 | 62 lb | \$1,460.00 |
| 100934 | CAPXS4U-250GG | 24 x 24 in | 3.31 in | 4 | 300 lb | 0.01 | 150 kg | 0.005 | 12 lb | \$4,290.00 |
| 100935 | CAPXS4U-500GG | 24 x 24 in | 3.31 in | 4 | 600 lb | 0.02 | 300 kg | 0.01 | 12 lb | \$4,290.00 |
| 100943 | CAPXS4U-500HH | 30 x 30 in | 3.31 in | 4 | 600 lb | 0.02 | 300 kg | 0.01 | 187 lb | \$4,735.00 |
| 100944 | CAPXS4U-1000HH | 30 x 30 in | 3.31 in | 4 | 1500 lb | 0.05 | 600 kg | 0.02 | 187 lb | \$4,735.00 |
| 100945 | CAPXS4U-1000KK | 36 x 36 in | 3.75 in | 4 | 1500 lb | 0.05 | 600 kg | 0.02 | 250 lb | \$4,750.00 |
| 100946 | CAPXS4U-2500KK | 36 x 36 in | 3.75 in | 4 | 3000 lb | 0.1 | 1500 kg | 0.05 | 250 lb | \$4,750.00 |
| 100947 | CAPXS4U-5000KK | 36 x 36 in | 3.75 in | 4 | 6000 lb | 0.2 | 3000 kg | 0.1 | 250 lb | \$4,750.00 |
| 100949 | CAPXS4U-2500NN | 48 x 48 in | 3.75 in | 4 | 3000 lb | 0.1 | 1500 kg | 0.05 | 390 lb | \$5,325.00 |
| 100950 | CAPXS4U-5000NN | 48 x 48 in | 3.75 in | 4 | 6000 lb | 0.2 | 3000 kg | 0.1 | 390 lb | \$5,325.00 |