



## Standard Features

- Specialized PC software makes data entry easy
- Boost product ID storage to nearly limitless potential, and manage as many scales as necessary
- Eliminates front-panel entry of ID parameters
- Quickly program, edit and manage scales and each unique product ID right from your PC
- Stores the details of each transaction for either a single scale or multiple scales
- Collects data as transactions occur and provides detailed transaction and productivity reports
- Allows users to add, edit and access IDs over a network connection
- Reports can be exported into word processing, spreadsheet or PDF formats

## Part Number/Price

Part #	Description	Price
117358	Software package, WeighVault for CW90/90X	\$250.00
125546	Software package, WeighVault for Counterpart	\$250.00

## Specifications

### Minimum System Specifications:

- CW-90X or Counterpart®
- 800+ MHz Intel® compatible processor
- 1 GB of RAM
- 750 MB hard drive space
- See website for OS details
- TCP/IP connections to a CW-90, CW-90X or Counterpart

### Recommended System Specifications:

- 1.0 GHz Intel compatible processor
- 2 GB of RAM
- 4 GB of hard drive space
- Microsoft XP SP3 (32-bit), Windows Vista (x86 or x64), Windows 7 (x86 or x64), Windows 8 (64-bit), Windows 10
- TCP/IP connections to a CW-90, CW-90X or Counterpart

### Network Requirements:

- The PC running the WeighVault service must have a static IP address
- Known IP address and subnet of the host PC; if connecting via WLAN, known network SSID and security settings (pass keys and phrases)
- Network policy must allow passwords of six characters

## Counterpart Functions Only

- Data Registers:
  - ID code [32 characters]
  - Unit weight [6 places]
  - Tare weight [6 places]
  - Units field
  - Parts name [32 characters]
  - Part Description [32 characters]
  - Lot number [32 characters]
  - Location [12 characters]
  - Inventory Quantity [7 characters]
- Reports:
  - Part
  - Inventory
  - Activity
  - Location

## CW-90/90X Functions Only

- Part Fields:
  - Product ID [4 characters]
  - Two Descriptions Fields [32 Characters each]
  - Target
  - Tare
  - Over
  - Under
  - Units
- Reports:
  - Transaction
  - Productivity

## Specifications

### System Requirements:

- Any version of Windows®
- Any Windows PC
- 4 MB of RAM
- 2 MB of hard disk space

### Communications:

WinWedge can collect data on any serial port (RS-232 or RS-485) and even on multiple ports simultaneously. Also supports full device control.

### Software Support:

Rice Lake Weighing Systems offers field software support for our software packages. Contact our service department for software support.



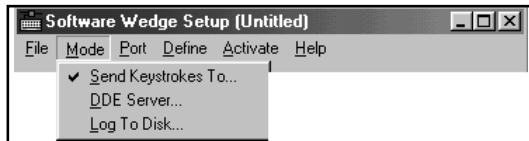
## Standard Features

- Input scale or instrument data directly into Excel®, Access®, statistical software, LIMS, MMIs, any Windows® application
- Transfers RS-232 data quickly and accurately; formats to your exact specifications
- Powerful DDE options for collecting data from multiple devices simultaneously
- Extremely easy to set up and use
- Additional Features (WinWedge Pro)
- Support for even the most complex devices and serial I/O with advanced data parsing, filtering, formatting and translation
- Support for TCP/IP as well as RS-232 data collection and I/O
- More advanced device control options
- Additional features such as math functions and virtual instrument mode
- Five RS-232 and TCP/IP communications software products provided free of charge

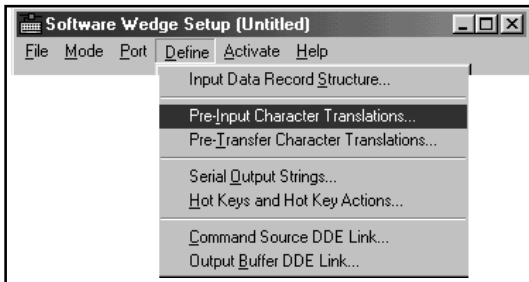
## Part Number/Price

Part #	Description	Price
75351	WinWedge® TAL software, 32 Std	\$325.00
72304	WinWedge® TAL software, 32 Pro, TCP/Wedge	\$545.00

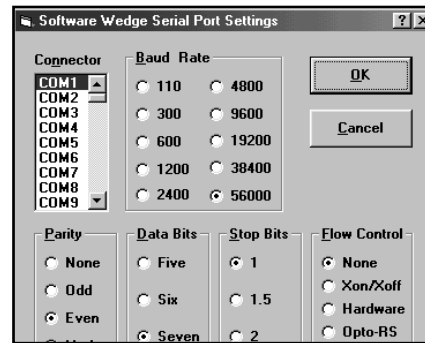
1. Select how you want the data collected:



2. Choose the communication parameters for your serial device:



3. Define how you want the serial data to be parsed, filtered, and translated:



4. Activate WinWedge and watch your serial data "pop" into your application:

