



# SteamPac and WaterPac

Unfired Steam and Hot Water Generators

SteamPacs • Vertical or Horizontal • 10 to 415 HP

WaterPacs • Vertical or Horizontal • 200,000 to 14,000,000 BTU/HR

SteamPacs and WaterPacs are designed for  
use in Thermal Fluid (Hot Oil) Systems

**RUGGED  
ROBUST  
RELIABLE**

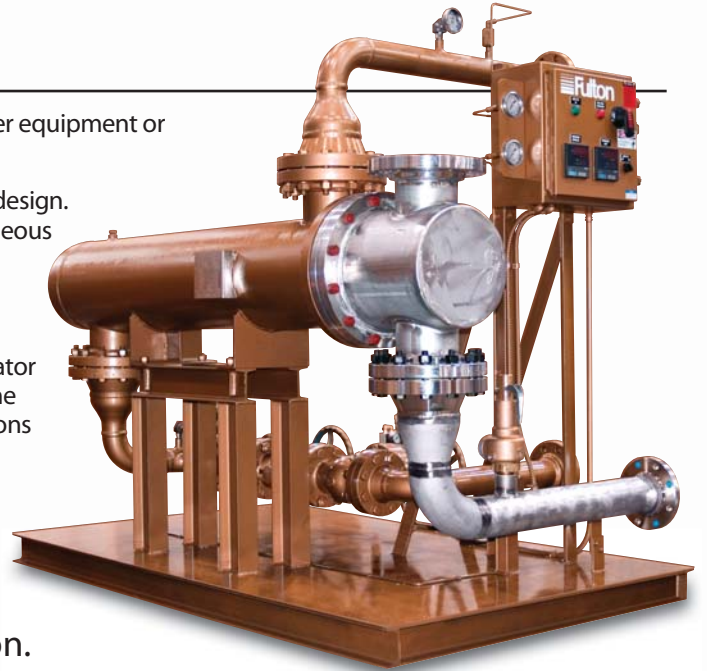


The heat transfer innovators.

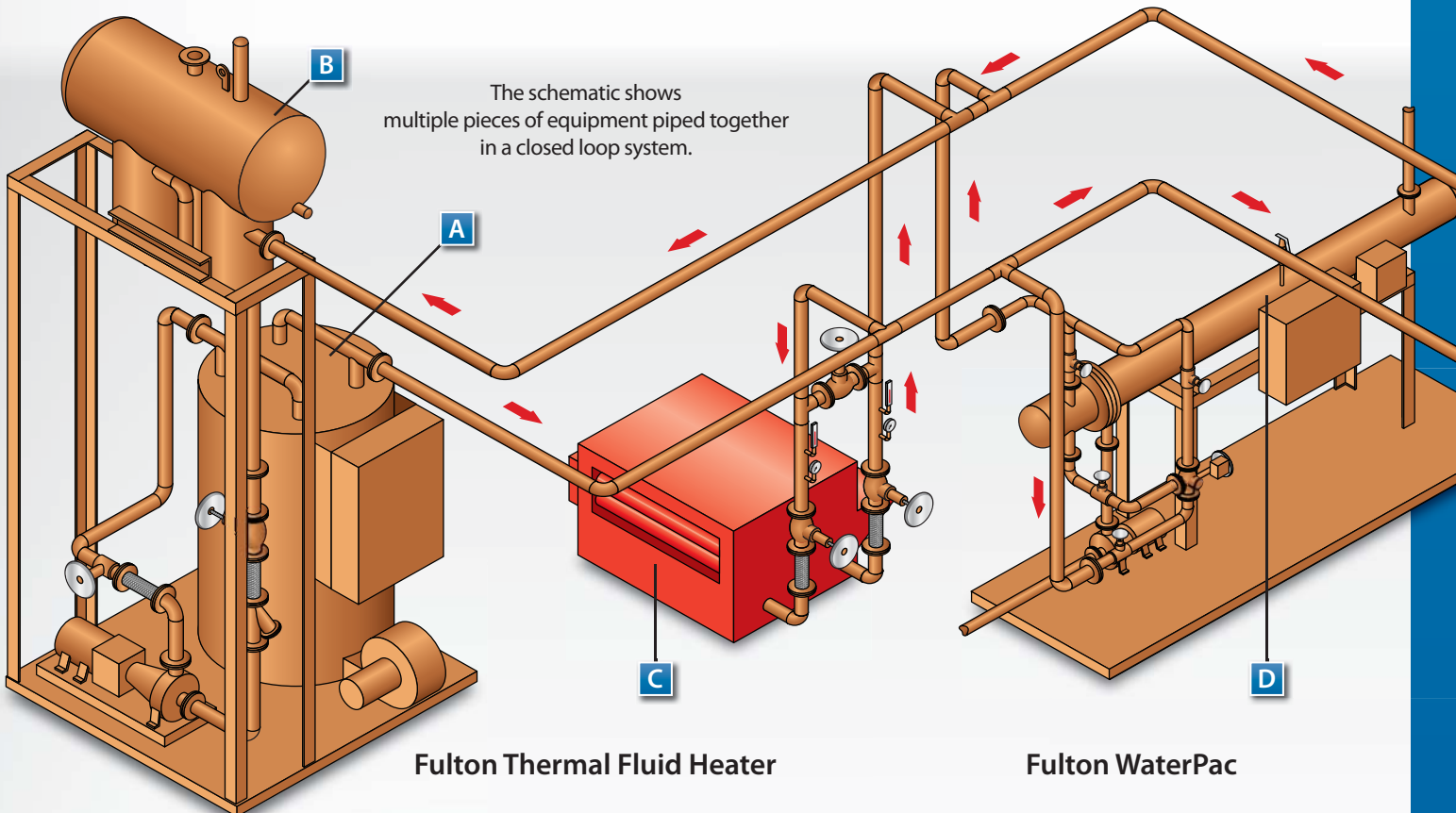
# FULTON WATERPAC UNFIRED HOT WATER GENERATOR

## KEY FEATURES

- Can be installed in conjunction with existing thermal fluid systems, thus eliminating the need for a separate fired water heater
- Eliminates the need for a stack and additional fuel hookup
- Minimal maintenance
- Automatic temperature control
- All water side surfaces can be stainless or carbon steel
- Potable water can be heated without contamination from minerals
- Can be used with other equipment or as a single user
- Vertical or horizontal design. Can provide instantaneous hot water or maintain temperature of a hot water storage tank
- Each hot water generator is designed to meet the customer's specifications and application



Wherever you need additional hot water in any laundry or industrial process heating application. From 200,000 to 14,000,000 BTU/HR.



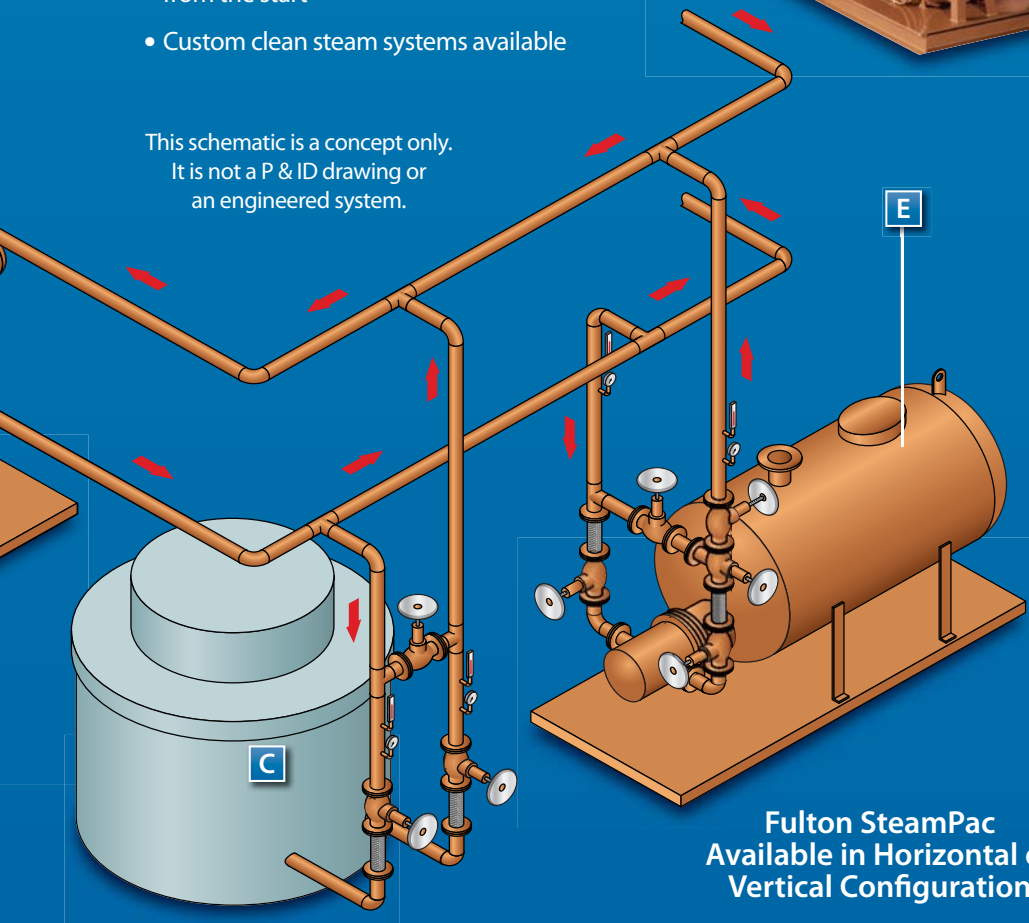
# FULTON STEAMPAC UNFIRED STEAM GENERATOR

## KEY FEATURES

- Wide range and flexibility of steam pressure, 10 to 415 HP with pressures from 15 to 300 PSIG
- Vertical design uses minimal floor space
- Wide modulation range (30:1)
- Produces dry steam (95% minimum) Very dry steam (99.5%) upon request
- If system runs dry, it causes no harm to the SteamPac
- Low installation costs. No costly fuel hookups or stack required
- Unfired pressure vessel, possibly eliminating requirements for a stationary attendant
- Low thermal inertia - full steam quickly from the start
- Custom clean steam systems available
- Responds quickly to process demands
- Fully automatic operation
- Simple, safe, quiet operation
- High steam quality



This schematic is a concept only.  
It is not a P & ID drawing or  
an engineered system.

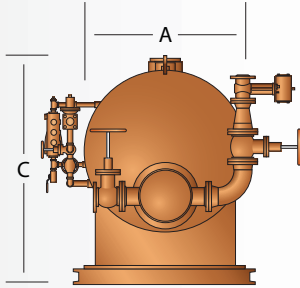
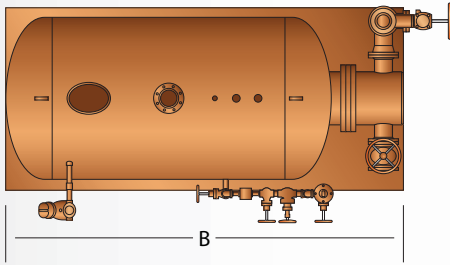


Fulton SteamPac  
Available in Horizontal or  
Vertical Configuration

Fulton thermal fluid equipment  
can be designed into any  
process system needing heat,  
steam, or hot water.

- A** Fulton Thermal Fluid Heater (Hot oil temperatures up to 750°F)
- B** Fulton Patented Deaerator Thermal/Buffer Expansion Tank
- C** Users: Single or multiple users can be designed into a thermal fluid system. Autoclaves, fryers, reactors, ironers, ovens, open baths, calendar roll equipment, platens, presses, anywhere process heat, steam, and hot water is used
- D** Fulton WaterPac Horizontal or Vertical Design Unfired Hot Water Generators
- E** Fulton SteamPac Horizontal or Vertical Design Unfired Steam Generators

# SPECIFICATIONS AND DIMENSIONS



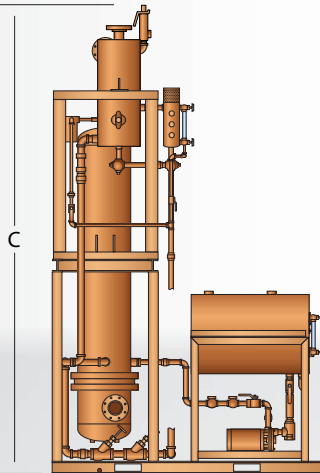
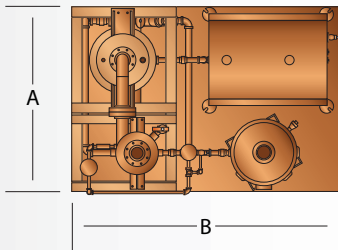
Horizontal SteamPac

Specifications • Fulton Horizontal SteamPacs from 70 to 415 HP										
Models	FT	070XH	100XH	150XH	180XH	200XH	250XH	300XH	350XH	415XH
Steam Output*	LB/HR	2,415	3,450	5,175	6,210	6,900	8,625	10,350	12,075	14,392
	KG/HR	1,096	1,565	2,347	2,817	3,130	3,912	4,695	5,477	6,528
Input	BTU/HR (1000)	2,343	3,347	5,021	6,025	6,694	8,368	10,041	11,715	13,891
	KCAL/HR (1000)	590	843	1,265	1,518	1,687	2,108	2,530	2,952	3,500
Flow Rate	GPM	160	228	342	411	456	570	684	798	946
	M3/HR	37	52	78	94	104	130	156	182	215

\*From 0 psig and at 212°F (100°C). Steam Output is based on a minimum thermal fluid temperature of 550°F (288°C)

Dimensions • Fulton Horizontal SteamPacs from 70 to 415 HP										
Models	FT	070XH	100XH	150XH	180XH	200XH	250XH	300XH	350XH	415XH
(A) Width	IN	42	48	48	48	60	60	60	60	60
	MM	1,067	1,219	1,219	1,219	1,524	1,524	1,524	1,524	1,524
(B) Length	IN	108	144	144	144	150	150	160	160	160
	MM	2,743	3,658	3,658	3,658	3,810	3,810	4,064	4,064	4,064
(C) Height	IN	84	98	98	98	98	98	98	98	98
	MM	2,134	2,489	2,489	2,489	2,489	2,489	2,489	2,489	2,489

All dimensions are based on 550°F thermal fluid temperature and are subject to change based on specific customer requirements.



Vertical SteamPac

Specifications • Fulton Vertical SteamPacs from 10 to 100 HP										
Models	FT	010X	015X	020X	030X	040X	050X	075X	100X	
Steam Output*	LB/HR	345	517	690	1,035	1,380	1,725	2,587	3,450	
	KG/HR	157	235	313	470	626	783	1,174	1,565	
Input	BTU/HR (1000)	335	502	669	1,017	1,339	1,674	2,678	3,347	
	KCAL/HR (1000)	84	126	169	256	337	422	675	843	
Flow Rate	GPM	23	35	46	69	92	114	171	228	
	M3/HR	5.2	8	10.5	16	21	26	39	52	

\*From 0 psig and at 212°F (100°C). Steam Output is based on a minimum thermal fluid temperature of 550°F (288°C)

Dimensions • Fulton Vertical SteamPacs from 10 to 100 HP										
Models	FT	010X	015X	020X	030X	040X	050X	075X	100X	
(A) Width	IN	84	72	92	92	92	92	92	92	
	MM	2,134	1,829	2,337	2,337	2,337	2,337	2,337	2,337	
(B) Length	IN	72	84	72	72	72	72	92	92	
	MM	1,829	2,134	1,829	1,829	1,829	1,829	2,337	2,337	
(C) Height	IN	125	125	125	125	143	143	169	169	
	MM	3,175	3,175	3,175	3,175	3,632	3,632	4,293	4,293	

All dimensions are based on 550°F thermal fluid temperature and are subject to change based on specific customer requirements. Vertical SteamPac dimensions include feedwater tank and blowdown separator.

All SteamPac accessories including feedwater tanks, feedwater pumps, blowdown separators, chemical feed and water softeners are available from Fulton.



The heat transfer innovators.

Fulton Thermal Corporation  
972 Centerville Road, Pulaski, NY 13142  
Call: (315) 298-5121 • Fax: (315) 298-6390



www.fulton.com

steam\_waterpac-bro-2011-0804