

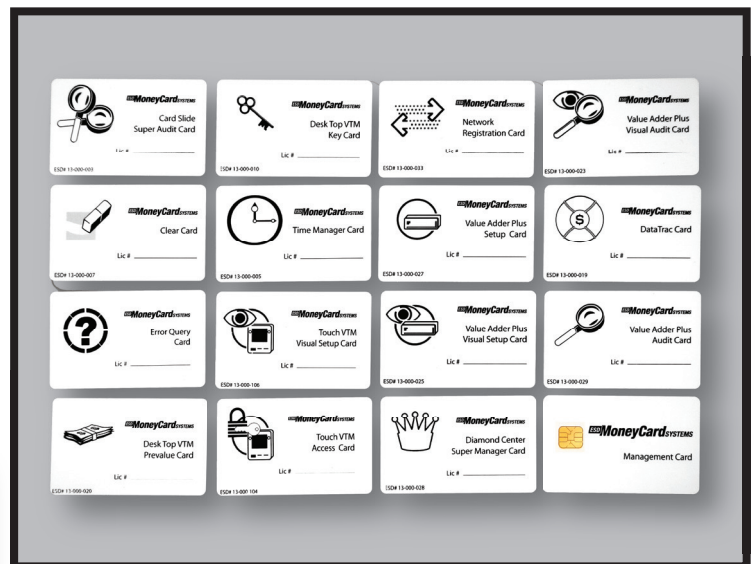


Management Cards

Management Cards are Used to Perform a Variety of Tasks. They are Used in Every Electronic Payment System Family to Set Up CardSlides

A complete Management Card set is included with the purchase of any ESD Electronic Payment System. The cards included in the set will depend on the products that have been purchased. A SmartCard System will include the largest number of Management Cards, but every system will include setup cards for the CardSlides.

Management Cards — 13-000-XXX



Prices and Specifications Are Subject to Change Without Notice.

ESD Electronic Payment Systems



270 Commerce Drive, Ft. Washington, PA 19034
Tel: 215.628.0860 • Toll Free in the U.S. and Canada: 800.523.1510
Toll Free Fax in the U.S. and Canada: 800.548.1638
Email: info@esdcard.com



Website: esdcard.com

Management Cards

Set Up Cards	These cards are programmed using LLMS software on a PC with an elective set of user defined parameters which include vend price; special time of day, day of the week discounts; class discounts; run time and top off for dryers. After the cards have been programmed they are inserted into the washer, dryer or vending machine CardSlides to complete the set up.
Super Audit Card – CardSlides	This card is used to collect discreet and accountable data from 16 SmartCard CardSlides on each Audit Card. Data will then be downloaded and processed by the LLMS software on a PC.
Visual Audit Card – VTM	This card provides visual collection data from the VTM which can then be read on the VTM display on site.
Audit Card - VTM	This card is used to collect discreet and accountable data from a single VTM. Data will then be downloaded and processed by the LLMS software on a PC.
Data Track	This card activates a unique card tracking function, which allows management to verify the activity of a customer's card and provide the operator an accurate accountability of all funds added to the customer's card.
Clear Card	This card removes all information from the reader.
Diagnostic Card	This card assists service technicians in trouble shooting various devices.
DVTM Key Card	These cards are assigned to various operators so that the usage of individual operators can be tracked and accounted.
Time Manager Card	This card sets the present time and date on the reader.
Network Registration Card	This card is used to determine location of individual readers on a CyberWash Network.
Network Parameter Card	This card is used to program the connectivity data between wireless readers and the wireless network in a CyberLaundry System.

ESD Electronic Payment Systems



Payment Systems For the World

© ESD ALL RIGHTS RESERVED — Part Number 11-400-146

270 Commerce Drive, Ft. Washington, PA 19034

Tel: 215.628.0860 • Toll Free in the U.S. and Canada: 800.523.1510

Toll Free Fax in the U.S. and Canada: 800.548.1638

Email: info@esdcard.com



Website: esdcard.com