



# ENDURA+

ULTRA HIGH EFFICIENCY  
CONDENSING BOILERS

2.5 – 6.0 MILLION BTU/HR



# UNCOMPROMISING PERFORMANCE

## A REVOLUTION IN FIRETUBE CONDENSING BOILER DESIGN

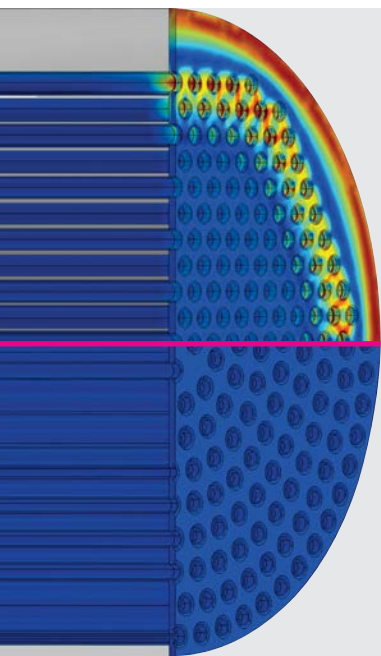
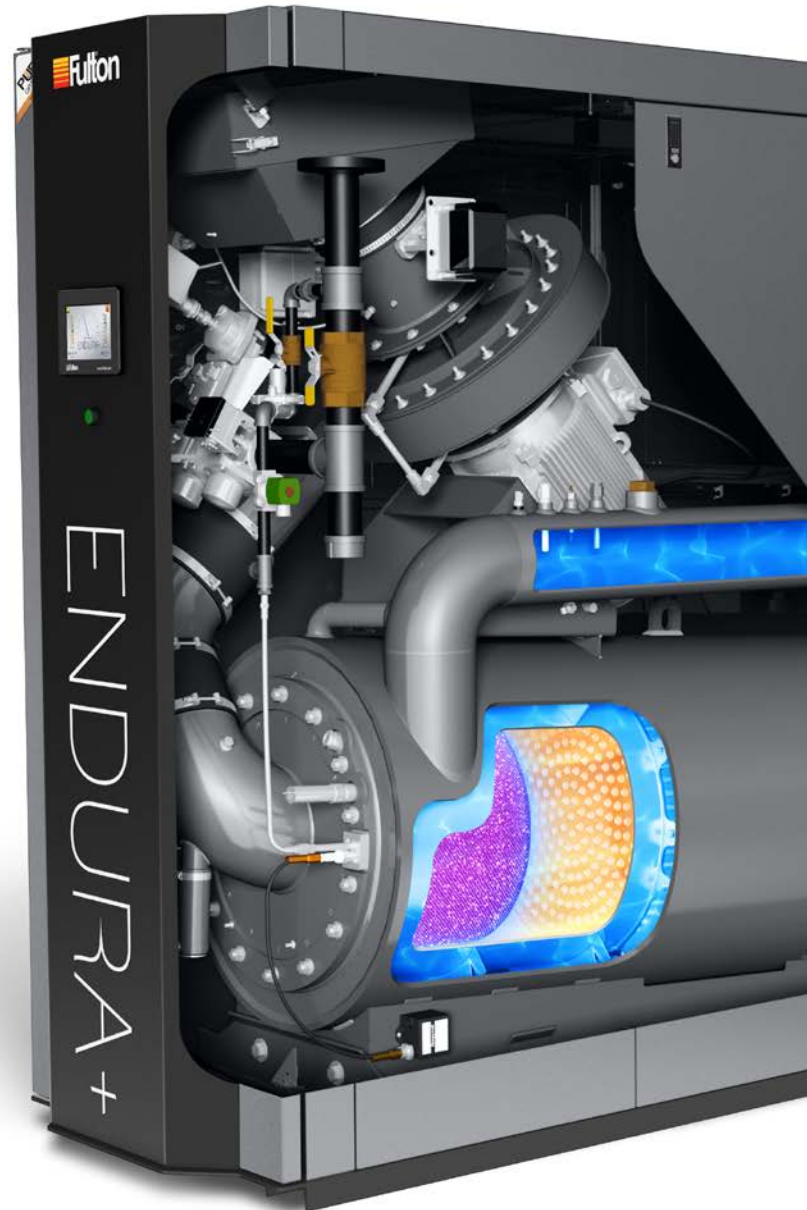
Fulton's ENDURA+ efficiently captures up to 99% of the fuel's energy while intelligently directing water through engineered flow paths.

- ▶ DESIGNED FOR VARIABLE PRIMARY FLOW
- ▶ UP TO 15:1 TURNDOWN; O<sub>2</sub> COMPENSATION
- ▶ NATURAL GAS PRESSURES DOWN TO 4" WC

## EASE OF INSTALLATION, OPERATION & SERVICE

**PURE Optimized** to fit an ultra-compact footprint, the ENDURA+ surpasses the reliability of existing boiler designs and is easier to install and service.

- ▶ FITS THROUGH A STANDARD DOORWAY
- ▶ ACCESS PANELS DETACH IN SECONDS
- ▶ SIMPLIFIED SERVICE & MAINTENANCE



## OPTIMIZED HEAT EXCHANGER

Built with **Duplex stainless steel**, the ENDURA+ heat exchanger features higher strength, increased resistance to corrosion, and superior thermal strain management. Shown on the left, Finite Element Analysis (FEA) reveals the stark contrast in operating stresses between competing equipment (top) and Fulton's patent-pending design (bottom).

- ▶ COMPACT, DURABLE, AND EFFICIENT
- ▶ 23% LESS THERMAL EXPANSION COMPARED TO 316L STAINLESS STEEL HEAT EXCHANGERS



**20+**  
**PATENTS**  
**PENDING**  
**WORLDWIDE**



# TRULY STRESS-FREE OPERATION

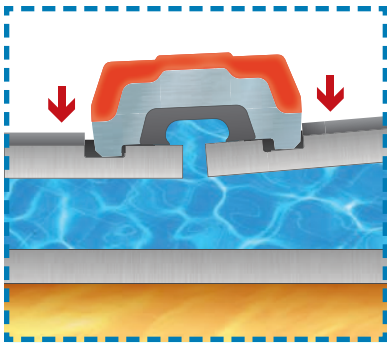
## FULTON EXCLUSIVE STRESS RELIEVER

Conventional designs sacrifice material integrity and durability by transferring the stresses of operation directly onto the tubesheet and heat exchanger tubes. The ENDURA+ eliminates longitudinal thermal expansion stress by absorbing thermal growth externally as the heat exchanger freely expands.

- ▼ AXIAL THERMAL EXPANSION STRESS ELIMINATED
- ▼ BOILER LIFE GREATLY EXTENDED
- ▼ LIFETIME THERMAL SHOCK WARRANTY



ABOVE: ENDURA+ 6 MM Btu/hr  
RIGHT: ENDURA+ 3 MM Btu/hr



▲ All deflection from heat exchanger expansion is absorbed externally by Fulton's patent-pending stress reliever.

# ADVANCED CONTROL TECHNOLOGY

## POWERFUL & INTUITIVE INTERFACE

Engineered by Fulton for the ENDURA+, the 7-inch touchscreen control maximizes performance and facilitates commissioning. It efficiently sequences up to 10 boilers and eliminates the need for a master boiler or standalone panel. If a boiler is powered off, the cascade seamlessly transitions to the next available stage with zero downtime.

### SIMPLIFIED OPERATION

Optimizes modular boiler efficiency with parallel sequencing and outdoor air temperature reset.

### HYDRONIC SYSTEM CONTROL

Sequences motorized isolation valves to enhance temperature control; closes valves via delta-T ensuring residual heat is dissipated.

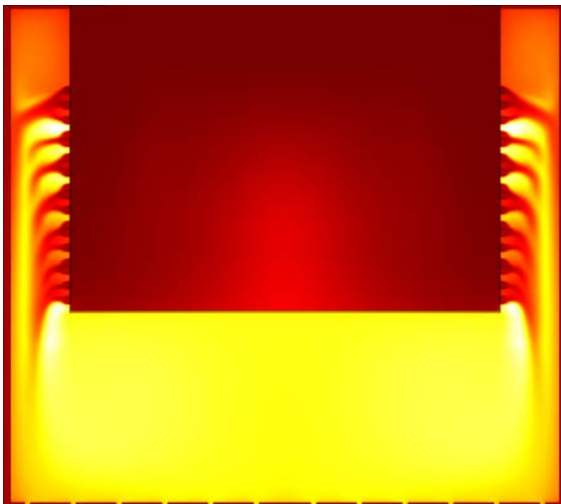
### BUILDING INTEGRATION

Communicates with the Building Automation System with Modbus; BACnet configurable.

### VARIABLE SPEED PUMP CONTROL

Automatically maintains heating water delta-T or delta-P with variable speed pump control and auto-backup rotation.

### Unprecedented combustion innovation using Computational Fluid Dynamics



▲ A convenient interface designed for ease of operation



▲ Quickly access detailed status information

## RELIABLE & EFFICIENT COMBUSTION

Fulton's combustion technology features turndowns up to 15:1 with high-precision servo motor control, outperforming all conventional platforms.

**O<sub>2</sub> Compensation** tunes the fuel/air ratio in real-time, boosting efficiency across all modulation rates and automatically adjusting for seasonality.

### SMALLER FLUE DIAMETERS

### LONGER VENT RUNS

### NO<sub>x</sub> LEVELS CONFIGURABLE TO <9 PPM

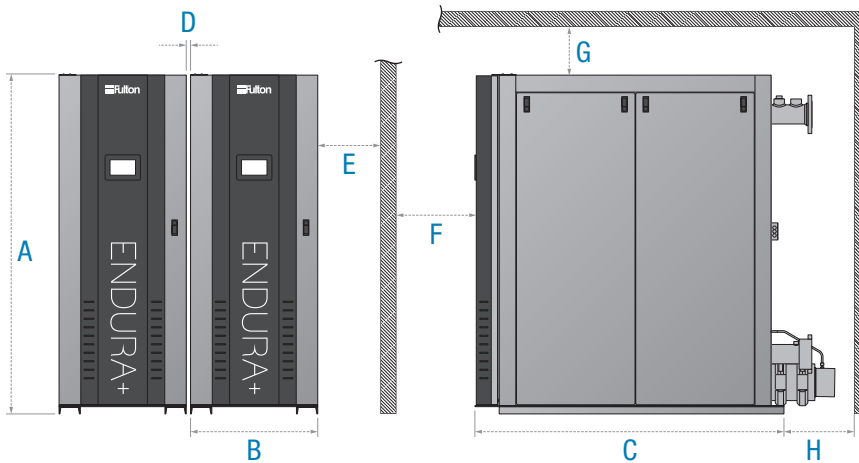


# INSTALLATION SIMPLIFIED

- ▼ VARIABLE PRIMARY FLOW DESIGN
- ▼ REDUCED INSTALLATION COSTS
- ▼ NO DEDICATED BOILER PUMPS
- ▼ SMALLEST SERVICE FOOTPRINT
- ▼ GREATEST CONDENSING POTENTIAL

ENDURA+ boilers are designed for the simplified piping method of variable primary flow. This enhances temperature control, reduces design complexity, and maximizes condensing boiler efficiencies by delivering the lowest temperature water directly to the boiler rather than blending with heated water in a primary-secondary manifold.

MODEL:		EDR+2500	EDR+3000	EDR+6000
<b>Specifications</b>				
Input Capacity	MM BTU/Hr	2.5	3.0	6.0
Water Content	GAL	80	80	180
Dry Weight	LBS	2,600	2,600	5,100
Operating Weight	LBS	3,267	3,267	6,593
AHRI Thermal Efficiency	%	96.8	96.3	95.9
Turndown Ratio		12.5:1	15:1	15:1
<b>Dimensions</b>				
(A) Boiler Height	IN	80	80	79
(B) Boiler Width	IN	30	30	34
(C) Boiler Depth	IN	73	73	116.2



Clearances		
(D)	IN	1
(E)	IN	24
(F)	IN	36
(G)	IN	18
(H)	IN	24 (36 on 6 MM)

**NOTE:** All specifications and dimensions are approximate and for reference only. Fulton practices continuous product improvement and reserves the right to change specifications and/or dimensions without notice. Graphics contained in this brochure may not be representative of actual product.

Find your local sales representative online at:

[www.fulton.com/sales](http://www.fulton.com/sales)



/FULTON-COMPANIES



/FULTONBOILER



@FULTONBOILER



Fulton Heating Solutions, Inc.  
6288 Running Ridge Road  
Syracuse, NY 13212  
(315) 298-5121



Printed in the U.S.A  
EDR-PLUS\_BRO\_2017-1221

Learn more about Fulton products and services online at:  
[www.fulton.com](http://www.fulton.com)