

ADC EcoDry ES-76

75-lb Capacity Coin Dryer

Standard Features:

- 75-lb. Capacity
- Single Phase Reversing
- Self-Diagnostic Microprocessor Control
- 100% Axial Airflow
- Completely Sealed Basket
- Non-Perforated Ribs and Basket
- Dual-Paned Door Glass
- Four-Point Roller Support System
- High Capacity Lint Drawer

Optional Features:

- Stainless Steel Front, Cabinet & Basket
- Residual Moisture Control (Coin RMC)
- S.A.F.E. (Sensor Activated Fire Extinguishing System)
- Card Ready

COIN



ES-76 Coin Dryer

Why Purchase ADC EcoDry?

100% Axial Airflow (standard)

EcoDry tumblers incorporate a 100% axial airflow design with a completely sealed basket. This ensures the most efficient drying available on the market today without sacrificing dry times.

Four-Point Roller Support System (standard)

EcoDryers are designed with a four-point roller support system, eliminating costly repairs and downtime due to trunnion failures.

Single Phase Reversing (standard)

Single Phase Reversing is standard on the ES-76 and ES-50 (optional on other units). What once was an expensive option requiring an upgrade from single phase to three phase electrical service is now available in single phase. A reversing tumbler ensures that the load doesn't "rope" or "ball up", providing a quicker, more even drying process.

Available Option: Residual Moisture Control

EcoDry utilizes a unique Residual Moisture Control (Coin RMC) sensing system to measure the presence of moisture in the load. The patented system will save the coin laundry owner utility costs as it senses when the load is dry even if there is time left on the coin meter. Coin RMC reduces the heat input while it continues to run the tumbler and provides the end-user with dry, warm clothes. Coin RMC ensures full revenue for the laundry owner while at the same time reducing utility costs.

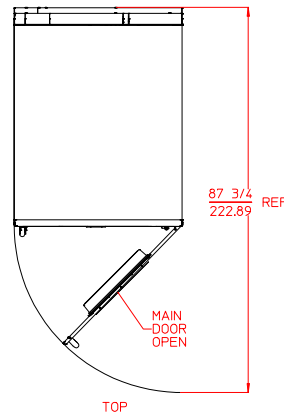
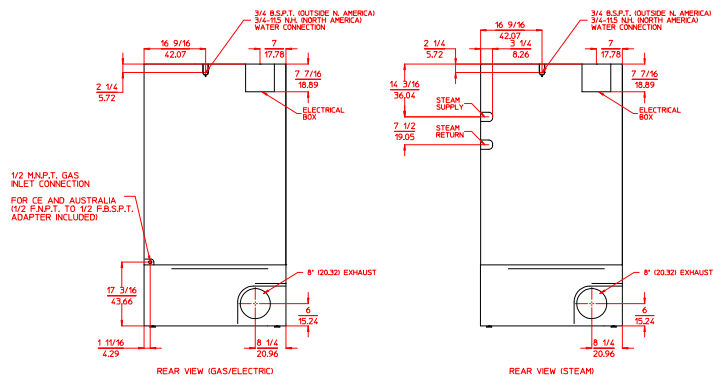
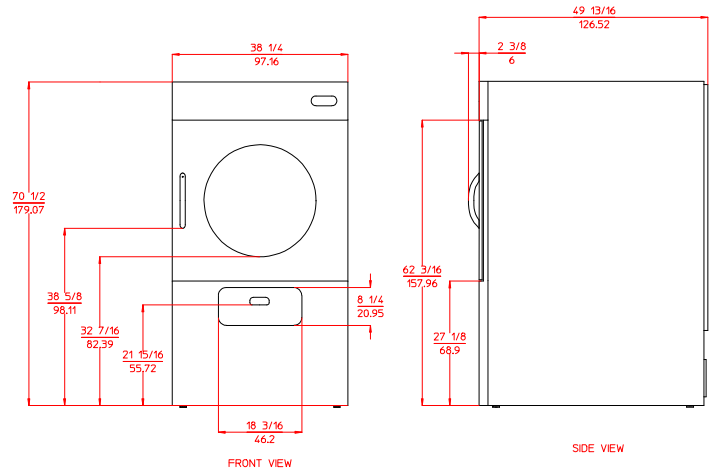
Your local ADC independent authorized distributor



ADC EcoDry ES-76

ES-76 Specifications

Tumbler Capacity (Dry Weight)	75 lbs. (34.02 kg)
Tumbler Diameter	37" (93.98 cm)
Tumbler Depth	35-1/2" (90.17 cm)
Tumbler Volume	22.09 cu ft (625.52 L)
Tumbler/Drive Motor	3/4 hp (0.56 kW)
Blower/Fan Motor	1/2 hp (0.37 kW)
Door Opening (Diameter)	27-3/8" (69.53 cm)
Door Sill Height	31-1/4" (79.375 cm)
S.A.F.E. Water Connection	North America 3/4" F.N.P.T. (11.5 N.H.) Outside North America 3/4" B.S.P.T.
Dryers per 20'/40' Container	9 / 20
Dryers per 48'/53' Truck	25 / 27
Gas	
Voltage Available	120-240V 1ø 2,3w 50/60 Hz
Approximate Net Weight	745 lb (337.93 kg)
Approximate Shipping Weight	775 lb (351.53 kg)
Airflow	60 Hz 600 cfm (17.00 cmm) 50 Hz 600 cfm (14.16 cmm)
Heat Input	60 Hz 130,000 Btu/hr (32,760 kcal/hr) 50 Hz 110,000 Btu/hr (27,720 kcal/hr)
Exhaust Connection (Diameter)	8" (20.32 cm)
Compressed Air Connection	N / A
Compressed Air Volume	N / A
Inlet Pipe Connection	1/2" M.N.P.T. 1/2" F.B.S.P.T. (CE and Australia Only)
Electric	
Voltage Available	200-416V 1,3ø 3,4w 50/60 Hz
Approximate Net Weight	745 lb (337.93 kg)
Approximate Shipping Weight	775 lb (351.53 kg)
Airflow	60 Hz 600 cfm (17.00 cmm) 50 Hz 500 cfm (14.16 cmm)
Exhaust Connection (Diameter)	8" (20.32 cm)
Compressed Air Connection	N / A
Compressed Air Volume	N / A
Oven Size	
kW	Btu/hr kcal/hr
18.0	61,473 15,491
18.5	63,105 15,902
20.3	69,418 17,493
22.0	75,084 18,921
Steam	
Voltage Available	120-240V 1ø 2,3w 50/60 Hz
Approximate Net Weight	745 lb (337.93 kg)
Approximate Shipping Weight	775 lb (351.53 kg)
Airflow	60 Hz 600 cfm (17.00 cmm) 50 Hz 500 cfm (14.16 cmm)
Steam Consumption	107 lb/hr (48.53 kg/hr)
Operating Steam Pressure	150 psi max (10.34 bar)
Exhaust Connection (Diameter)	8" (20.32 cm)
Compressed Air Connection	N / A
Compressed Air Volume	N / A
Boiler HP (Normal Load)	4 Bhp
Standard Supply Connections	3/4" F.N.P.T.
Standard Return Connections	3/4" F.N.P.T.



Electrical Service Specifications					
SERVICE VOLTAGE	PHASE	WIRE SERVICE	APPROX AMP DRAW		CIRCUIT BREAKER
			60 Hz	50 Hz	
GAS					
120	1ø	2	16.1	--	20
200	1ø	2	14.7	--	20
208	1ø	2	14.7	--	20
220	1ø	2	13.8	--	20
230	1ø	2	13.7	--	20
240	1ø	2	13.4	--	20
220	1ø	2	--	11.3	15
230	1ø	2	--	11.3	15
240	1ø	2	--	11.9	15
STEAM					
120	1ø	2	12.7	--	20
200	1ø	2	12.8	--	20
208	1ø	2	12.8	--	20
220	1ø	2	11.8	9.4	15
230	1ø	2	--	9.4	15
240	1ø	2	11.4	10.0	15

Electrical Service Specifications													
SERVICE VOLTAGE	PHASE	WIRE SERVICE	OVEN kW	APPROX AMP DRAW		CIRCUIT BREAKER	SERVICE VOLTAGE	PHASE	WIRE SERVICE	OVEN kW			
				60 Hz	50 Hz						60 Hz	50 Hz	
ELECTRIC						ELECTRIC							
200	1ø	2	20.3	114.4	--	150	220	3ø	3	18.5	60.2	57.8	80
208	1ø	2	22.0	118.7	--	150	230	3ø	3	20.3	--	60.0	80
220	1ø	2	18.5	95.7	93.3	120	240	3ø	3	22.0	64.2	--	80
230	1ø	2	20.3	--	97.2	130	380	3ø	4	18.5	39.6	37.2	50
240	1ø	2	22.0	103.0	--	130	400	3ø	4	20.3	--	40.2	50
208	3ø	3	22.0	73.8	--	100	416	3ø	4	22.0	--	39.6	50

* Specifications in parentheses are metric equivalents.

8/27/15



For higher voltage please contact sales.

P/N 450601.A Rev. 09/24/15

88 Currant Road Fall River, MA 02720-4781 • 508.678.9000 • Fax: 508.678.9447 • Email: sales@amdry.com

www.adclaundry.com