

RL75016 WHE

Stainless Steel, Hermetically Sealed, IP69K



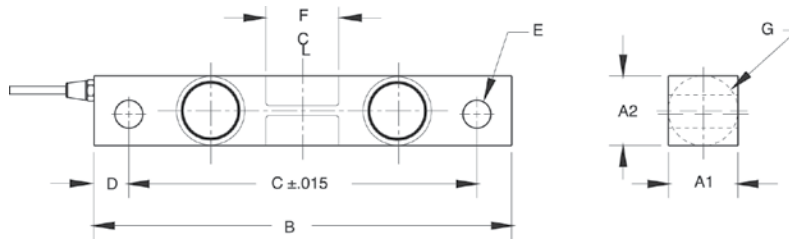
Dimensions

Picture is a representation of actual product

Rated Capacity	A1	A2	B	C	D	E	F	G	CONDUIT ADAPTER
lb/in									
1,000-5,000	1.22	1.22	7.50	6.25	0.62	0.50	1.12	1.25	1/2-14 NPT
10,000-25,000	1.44	1.94	8.75	7.50	0.62	0.81	1.62	1.99	1/2-14 NPT
kg/mm									
453.6-2,268.0	31.0	31.0	190.5	158.8	15.7	12.7	28.4	31.8	—
4,535.9-11,339.8	36.6	49.3	222.3	190.5	15.7	20.6	41.1	50.5	—

Order Information

Load Rating		Part#	Est. Weight	Price
1,000 lb	453.6 kg	67043	4 lb	\$695.00
1,500 lb	680.4 kg	67044	4 lb	\$695.00
2,000 lb	907.2 kg	67045	4 lb	\$695.00
2,500 lb	1,124.0 kg	67046	4 lb	\$695.00
5,000 lb	2,268.0 kg	67047	4 lb	\$695.00
10,000 lb	4,535.9 kg	67048	7 lb	\$785.00
15,000 lb	6,803.9 kg	67049	7 lb	\$785.00
20,000 lb	9,071.8 kg	67050	7 lb	\$785.00
25,000 lb	11,339.8 kg	67051	7 lb	\$785.00



Interchangeable Products

RICE LAKE WEIGHING SYSTEMS
RL75016SS* page 728

RICE LAKE WEIGHING SYSTEMS
RL75016SS-W* page 729

VPG CELTRON
DSR-HSS*

VPG SENSORTRONICS®
65016W*

VPG SENSORTRONICS®
65016WH

*Welded-seal

Weigh Module Available

RICE LAKE WEIGHING SYSTEMS
RL1600 Series page 680 and page 682

Specifications

Full Scale Output:
3.0 mV/V

Output Resistance:
699-707 ohms

Input Resistance:
686-714 ohms

Material/Finish:
Stainless steel

Temperature:
Operating range
-40° F to 150° F / -40° C to 65° C

Safe Overload:
150% full scale

Safe Sideload:
100% full scale

Rated Excitation:
5-10 VDC (15 V maximum)

Total Error:
0.03% full scale

Insulation Resistance:
2,000 megohms

Seal Type:
Hermetically sealed, IP69K

Cable Length:
25 ft (7.6 m)

Cable Diameter:
0.200 polyurethane jacket

Cable Color Code:
Red+ Excitation
Black- Excitation
Green+ Signal
White- Signal

Warranty:
Two-year limited warranty

Approvals:

