

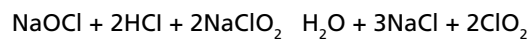
Pure 3

PureLine's Pure3 generator line combines affordability with optimal efficiency and safety. Utilizing three precursors (sodium chlorite, sodium hypochlorite, and hydrochloric acid), the Pure3 system gives our customers the best in high efficiency, medium to high volume, and safe generation. With low maintenance cost and reliable operation, the Pure3 system can be built with a simple frame configuration or with a fully enclosed cabinet.

The Pure3 like all of our lines are designed with the customer's needs in mind. Capable of multiple dosing methods (flow, residual, timer, etc), these generators can be configured to offer remote monitoring and production tracking. Producing ClO₂ on demand, there is no need for bulk storage of solution. With an inherently safe design and multiple safety interlocks, the Pure3 system offers our customers a high level of value for their investment.



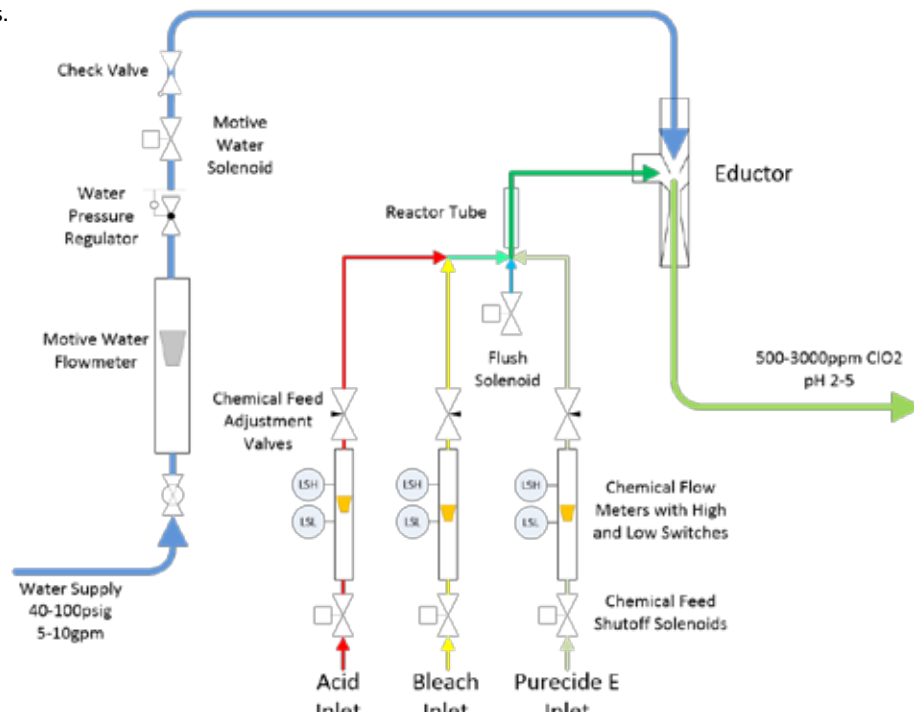
Reaction Chemistry



Pure Advantages

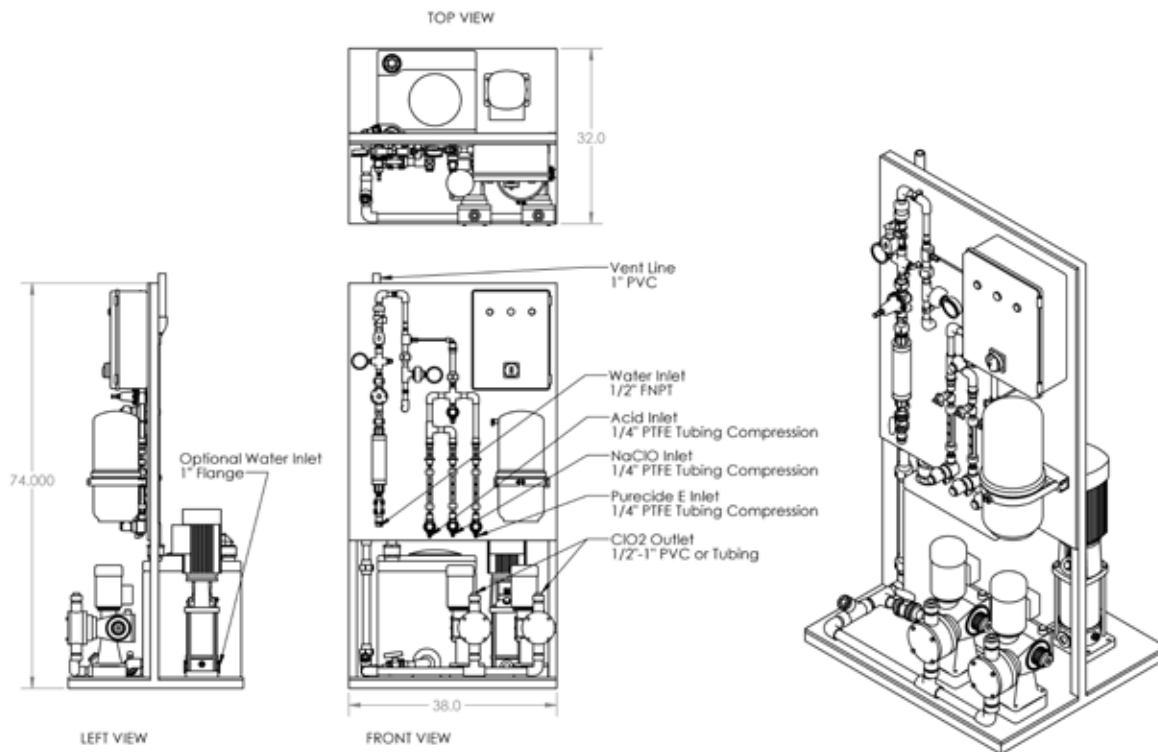
- Affordable, high efficiency system.
- Low maintenance cost.
- Enhanced monitoring and control capabilities.
- Multiple safety interlocks.
- Enhanced chem. feed control to maximize efficiency and safety.
- Broad production range (<1 lb to > 1,500 lbs per day)

Process Flow Diagram



Pure 3

Pure 3 20lb to 4000lb/day Electrochemical Generator



Generator Specifications

- Capacity: 20 lbs – 4000 lbs / day
- Chemical Usage: Pure-3 Generation
 - Purecide E 4.65lbs/lb ClO₂
 - 15% HCl 4.7lbs/lb ClO₂
 - 15% NaOCl 3.7 lbs/lb ClO₂
- Electrical Power: 220VAC 1ph 30A service (60A for larger units requiring a ClO₂ pump)
- Inlet Water: 20 Mesh filtered water.
 - Pure-3 generation
 - 10 psig (lift pump available to provide flow for tanks with low liquid height)
 - 10-100gpm for 10 to 160lbs/hr units respectively
- Co-Products:
 - Pure-3 generation
 - Salt (NaCl ~1.5lb/lb ClO₂)
 - Excess HCl <1lb/lb ClO₂
- Controls: Allen Bradley MicroLogix PLC, AB Panel View Plus 700 Color touch screen
- Cabinet: White Polypropylene 3 compartment (generator, electrical and acid pump)
- Dimensions: Same as CP, CG and CGCA
- Weight: 500 lbs

For more information
or to purchase:

PureLine

www.pureline.com

info@pureline.com

647 South Vermont Street
Palatine, IL 60067
847-963-8465