

**Envirosight**



**ROVER X**

**The Power of One**

Safe, Easy and Advanced Inspection Crawler



# ROVER X

## The Power of One

ROVER X is the one system that lets you do everything—control inspections, view and record digital video, log observations, generate reports, and link directly to asset-management software. All this capability is packed into a simple three-piece layout, with no CCU or other components to clutter your truck.

ROVER X is built on a powerful digital backbone. Not only can you add side-scanning, laser profiling and lateral launch, you can view status from onboard sensors, automate tasks with macros, and measure defects on-screen. And future capabilities are limitless—ROVER X's firmware updates automatically to the latest features and accessory support.

Technology aside, ROVER X is built for the rigors of sewer work. Twelve wheel options—plus camera lift, carriage and lamp accessories—mean ROVER X transforms in seconds to inspect any line. Its steerable six-wheel drive navigates past obstacles, and overlapping wheels climb offsets better than tracks.

# ROVVER X

## Responsive Controls

Control multiple camera and crawler functions at once. • View live and recorded video directly on controller. • Enhance productivity with custom controls. • Use macros to automate inspection tasks like joint scanning. • Access specialized functions using intuitive touchscreen interface.



camera controls

crawler/reel controls

## Recording

Store digital video and images, and export them via USB media or network port. • Review footage directly onscreen.

## Reporting

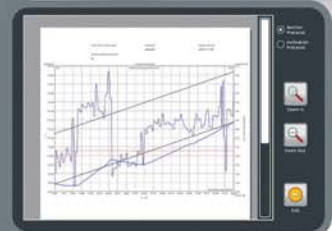
Log observations on touchscreen. • Use standard or custom defect catalogs. • Generate simple reports, or use WinCan for full reporting. • Overlay text on video without external hardware. • View system status and operating history.



observation entry



manhole-to-manhole report



incline report



WinCan export



system status

# Envirosight

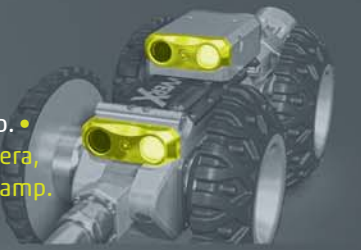


## Remote Control

Supplied standard, this single-channel wireless remote lets you control camera, crawler, lift and reel.

## Visibility

Capture superior video resolution. • Illuminate distant targets with 50% brighter LED light. • Boost illumination in large pipelines with auxiliary lamp. • See above flow with high-mount rear-view camera, plus additional rear-view camera on auxiliary lamp.



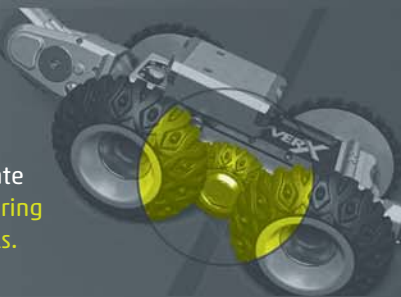
## Adaptability

Remotely adjust camera height over 7" range with lift accessory. • Handle pipe of any size, material and condition with 12 wheel options. • Extend height and wheelbase with carriage accessory for pipelines up to 72" diameter.



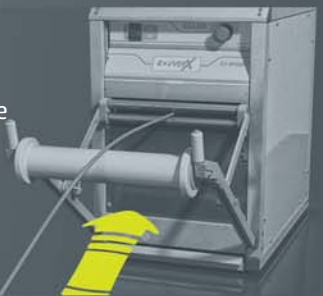
## Maneuverability

Control any number of camera and crawler functions at once. • Pivot in place with zero-degree turning. • Use macros to automate tasks (like joint scanning). • Avoid high-centering on offsets and debris with overlapping wheels.



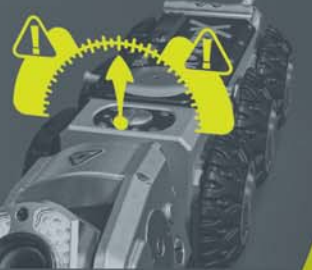
## Range

Crawl up to 1000' with standard reel. • Overcome obstacles with unmatched maneuverability and power. • Prevent tangles and maximize range with cable tension control. • Control reel direction, force, speed and mode directly from pendant.



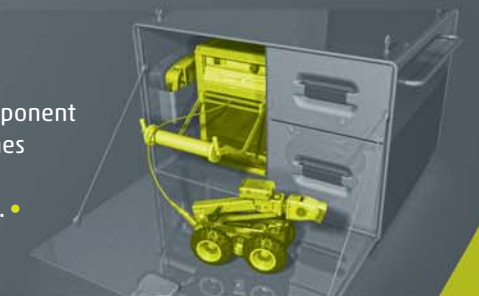
## Measurement

Track pipe grade with inclinometer. • Monitor temperature/pressure with onboard sensors. • Locate crawler using built-in sonde. • Easily add laser profiling and side-scanning. • Size defects with twin lasers. • Avoid flips with warnings from roll sensor.



## Field-Readiness

Inspect from truck, pickup or ATV using simple 3-component system. • Run off generator or inverter. • Inspect pipelines 6-72" diameter with single, reconfigurable crawler. • Store 1000' of strong, lightweight cable on compact, automated reel. • Transport system in compact, weatherproof enclosure.



## Complete Capability

With many wheel options—plus a detachable lift, carriage and auxiliary lamp—ROVER X is the only single system that lets you inspect lines 4–96" diameter. With quick-change wheels, you'll be ready in seconds to handle any combination of pipe size, material and condition. (See wheel chart on reverse panel.)



## Power to Maneuver

ROVER was the first crawler with steerable 6-wheel drive, giving operators the agility to navigate past obstacles that stop other crawlers.

ROVER X adds to that legacy with CAN-bus controls, which allow you to perform multiple functions at once. Now you can steer while panning the camera and adjusting camera lift height. Proportional joysticks give you fine control over speed and direction, and also let you pivot in place.



## Many Ways to Inspect



▶ **Digisewer.** Generate side-scans that capture every detail from pipe wall. With Digisewer, you can inspect three times faster than with CCTV—at a cost and learning curve anyone can manage. With the Digisewer laser ring, you can also measure pipe ovality.

◀ **Laser.** Onboard lasers can be used to measure defects and ovality. With an optional laser profiling accessory attached, WinCan's laser module can track cross-section along the pipe to determine ovality and create a geometric model.

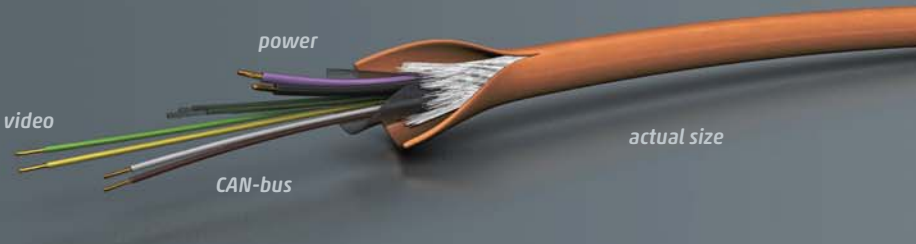
▶ **Lateral Launch.** The ROVER X SAT lateral launch add-on lets you inspect laterals from a mainline, ideal for finding gas line cross-bores and illicit flows. It integrates with any existing ROVER X system, reducing cost and equipment clutter.

## Onboard Intelligence

ROVER X uses CAN-bus, the same technology found in modern automobiles. This gives it capabilities not available anywhere else:

**Automatic Updates:** When connected to the Internet, the pendant updates its firmware automatically, ensuring the latest features.

**Concurrent Control:** Digital communications let you control any number of camera, crawler and accessory functions at once.

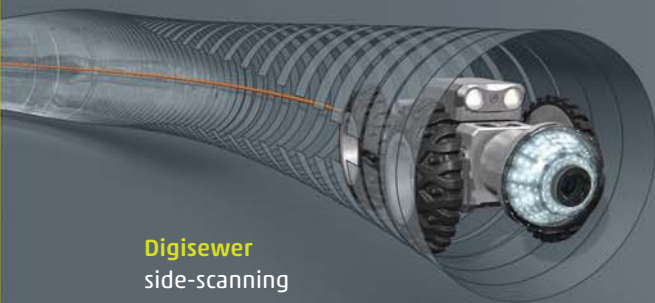


**Agility & Uptime:** With only six conductors, lightweight ROVER X cable is easy to pull long distances, and also easy to reterminate. Kevlar gives it a 1000-lb. break strength, and a tough jacket maximizes abrasion resistance.

**Future-Readiness:** ROVER X evolves with technology, which means its capabilities can grow with your needs.

**Information:** Access system status, from real-time sensor data to lifetime service and operating history.

**Self-Diagnostics:** Connect to a PC with ROVER X Studio, and our technicians can log in to read error codes and run diagnostics.



**Digisewer**  
side-scanning



**SAT**  
lateral launch

## Quick-Change Wheels

Swapping in seconds with no tools, ROVER X quick-change wheels address any combination of pipeline diameter, material and condition.



## system

*ratings* ..... CE, NRTL  
*power* ..... 120-240 Vac, 60 Hz  
*viewing capability* ..... pipelines 4-96" dia.

## camera (RCX90)

*imager* ..... color 1/4" CCD  
*resolution* ..... 720 × 576 pixels  
*zoom lens* ..... 120× (10× optical, 12× digital)  
*pressure rating* ..... 1 bar  
*features* ..... auto shutter; auto/manual focus  
*illumination* ..... dimmable 40-LED array  
*articulation* ..... ±145 deg tilt; infinite pan  
*measurement* ..... twin laser diodes  
*sensing* ..... temperature, pressure, pan/tilt  
*size* ..... 6.6" × 3.1" × 2.8" (168 × 81 × 72 mm)  
*weight* ..... 3.3 lb (1.5 kg)  
*materials* ..... aluminum, stainless steel

## crawler (RX130)

*wheels* ..... 6  
*turn radius* ..... down to 0.0"  
*camera* ..... color rear-view with tri-LED lamp  
*sensors* ..... pitch, roll, temperature, pressure  
*pressure rating* ..... 1 bar  
*size* ..... 12.2" × 4.4" × 3.2" (310 × 111 × 90 mm)  
*weight* ..... 13.2 lb (6 kg)  
*materials* ..... aluminum, stainless steel  
*sonde transmitter* ..... 33 kHz / 512 Hz

## control pendant (VC200)

*controls* ..... twin joysticks; push-button controls (power, lamp intensity, camera lift, zoom, focus, reel mode, pull force, crawl speed/direction); 10 soft keys; touchscreen  
*touchscreen* ..... 8.4" color (800×600 pixels)  
*video capture* ..... MPEG-4 (H.256)  
*image capture* ..... JPEG  
*storage* ..... external USB; internal flash (64 GB)  
*connectivity* ..... Ethernet  
*size* ..... 13.5" × 9.3" × 3" (342 × 236 × 75 mm)  
*weight* ..... 4.4 lb (2 kg)  
*firmware* ..... VisionControl (auto-updating)  
*bundled software* ..... VisionReport

## aux. lamp (optional)

*lamps* ..... four (4) tri-LED lamps  
*dimensions* ..... 4.6"×5.2"×5.2" (117×132×132 mm)  
*materials* ..... aluminum, stainless steel



## cable reel (RAX300)

*cable length* ..... 1000' (300 m)  
*cable diameter* ..... 1/4" (6.5 mm)  
*cable weight* ..... 0.03 lb/ft  
*cable strength* ..... 1000 lb  
*cable conductors* ..... 6  
*controls (local)* ..... power, emergency stop  
*controls (via pendant)* ..... auto/manual, speed, forward/reverse, pull strength  
*sensors* ..... tension, tilt  
*size* ..... 24.2"×12.4"×19.3" (620×315×490 mm)  
*weight* ..... 68.3 lb (31 kg)  
*connections* ..... pendant, service, video in/out

## camera lift (optional)

*lift range* ..... 3.1-10.2" (132-312 mm)  
*materials* ..... aluminum, stainless steel

## carriage (optional)

*wheelbase (w/l)* ..... 14.5"/12.2" (368/310 mm)  
*weight* ..... 34.2 lb (15.5 kg)  
*materials* ..... aluminum, stainless steel

## aux. lamp/rear camera (optional)

*forward illumination* ..... twin tri-LED lamps  
*camera* ..... color rear-view with tri-LED lamp  
*sonde transmitter* ..... 33 kHz / 512 Hz  
*materials* ..... aluminum, stainless steel

## basic system

- RX130 crawler body
- RCX90 camera head
- RAX300 reel with 1000' cable
- VC200 control pendant
- VisionReport software
- WinCan VX software (basic)
- single-channel digital wireless remote control
- small rubber wheels (6)
- medium rubber wheels (4)
- medium grease wheels (4)
- climber wheels (2)
- large rubber wheels (4)
- crawler body transport case
- camera head transport case
- tools (wrenches, pressure kit)

## options/accessories

- laser profiler
- DigiSewer side-scan camera
- lateral launch crawler/reel
- remote camera lift
- large-pipe carriage
- large- and small-dia. crawlers
- aux. lamp/rear-view camera
- desktop mount for pendant
- USB media for pendant
- wheel sets (see chart on flap)
- cable management accessories
- lowering devices
- WinCan VX software (advanced)
- other accessories



[www.envirosight.com](http://www.envirosight.com)

(866) 936-8476

111 Canfield Ave., Unit B3  
Randolph, NJ 07869

Regional sales, support and service  
across North and South America.

The industry's most  
extensive network of  
service partners.



We've analyzed the preferences of our inspection vehicle customers to identify the most popular configurations. We offer these as our Preferred Build-Outs.

We can also build inspection vehicles of any chassis and size, with production facilities on each coast for responsive delivery. We stock select chassis and boxes, and can retrofit new systems into existing trucks.