



# STEAM & CONDENSATE MANIFOLD

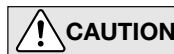
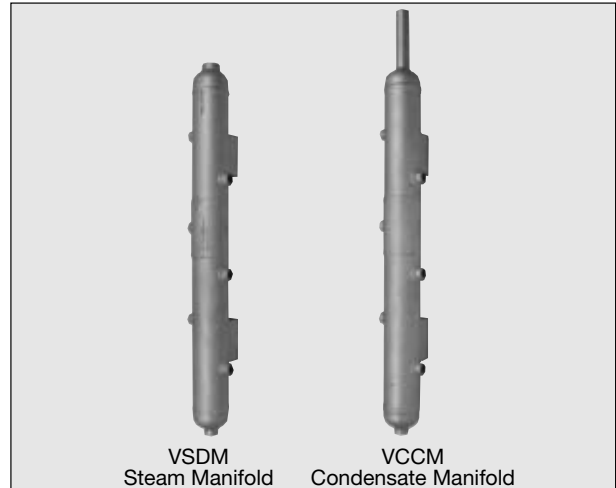
## MODEL VSDM/VCCM

### CARBON STEEL STEAM DISTRIBUTION / CONDENSATE COLLECTION MANIFOLD

#### Benefits

Engineered steam and condensate manifolds for steam tracing and condensate recovery.

1. Full 1" siphon construction on the 3" VCCM manifold reduces back pressure and prevents destructive two-phase flow into condensate return piping.
2. Unique offset design reduces flow interference and ensures continued operation of each tracing line.
3. ASME code certified with a U1 stamp.
4. Built-in blowdown and freeze protection connection for installation recommended in all climates.
5. Consolidation of steam trap locations allows lower installation heights, making traps more accessible, easier to install, isolate, test and troubleshoot.
6. Rugged, compact, and versatile design minimizes installation area and easily adapts to plant requirements.



**CAUTION** DO NOT DISASSEMBLE OR REMOVE THIS PRODUCT WHILE IT IS UNDER PRESSURE. Allow internal pressure of this product to equal atmospheric pressure and its surface to cool to room temperature before disassembling or removing. Failure to do so could cause burns or other injury. READ INSTRUCTION MANUAL CAREFULLY.

#### Specifications

Model	VSDM	VCCM
Manifold Type	Steam Distribution Manifold	Condensate Collection Manifold
Connection	<b>Screwed*</b>	<b>Screwed*</b> (Cond. outlet: Sch 80 pipe end*)
Steam Inlet / Condensate Outlet Connection Size (in)		<b>1**</b>
Drain / Blowdown Connection (in)		<b>3/4**</b>
Station Connection (in)		<b>1/2, 3/4, 1</b>
Number of Station Connections		<b>6, 8, 10, 12</b>
Maximum Operating Pressure (psig)	PMO	720
Maximum Operating Temperature (°F)	TMO	508
Maximum Allowable Pressure (psig)	PMA	720
Maximum Allowable Temperature (°F)	TMA	508

\* Other connections are available on request

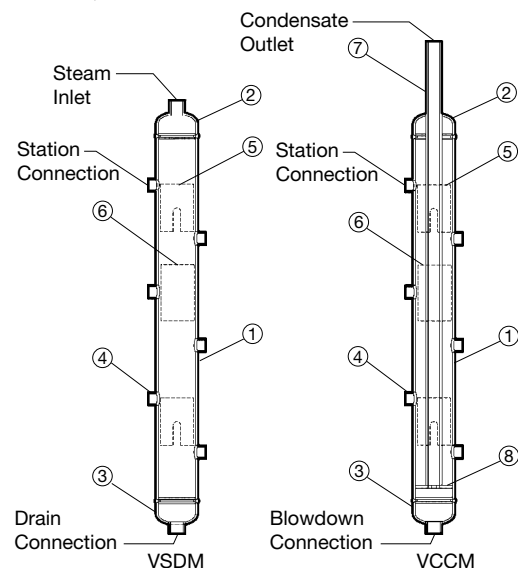
\*\* Other sizes available by special order



To avoid abnormal operation, accidents or serious injury, DO NOT use this product outside of the specification range. Local regulations may restrict the use of this product to below the conditions quoted.

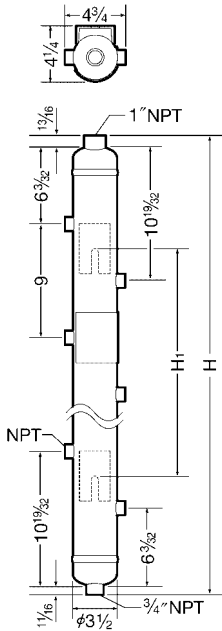
No.	Description	Material	ASTM/AISI
①	Body	Carbon Steel	A53 Gr.B
②	Upper End Cap	Carbon Steel	A234 type WPB
③	Lower End Cap	Carbon Steel	A234 type WPB
④	Station Connection	Carbon Steel	A105
⑤	Mounting Bracket	Carbon Steel	A36
⑥	Nameplate	Carbon Steel	AISI C1008
⑦	Siphon Tube	Carbon Steel	A106 Gr.B
⑧	Spacer	Carbon Steel	A36

Connections, sizes and number of stations in bold are standard

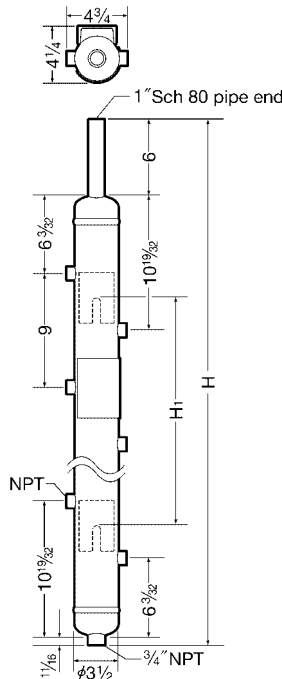


**Dimensions**

● **VSDM**



● **VCCM**



**VSDM**

(in)

Number of Station Connections	H	H <sub>1</sub>	Weight (lb)
<b>6</b>	36 3/16	18	26
<b>8</b>	45 3/16	27	34
<b>10</b>	54 3/16	36	42
<b>12</b>	63 3/16	45	51

**VCCM**

(in)

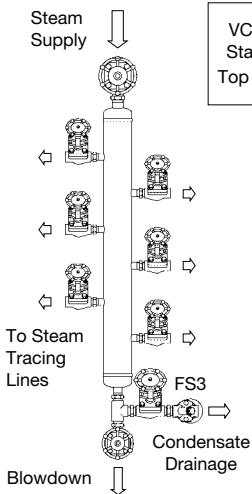
Number of Station Connections	H	H <sub>1</sub>	Weight (lb)
<b>6</b>	41 3/8	18	34
<b>8</b>	50 3/8	27	43
<b>10</b>	59 3/8	36	52
<b>12</b>	68 3/8	45	61

Note: Screwed connections shown are standard. Socket weld and flanged connections are available by special order, but length and weight may vary. Contact TLV for details concerning special order products.

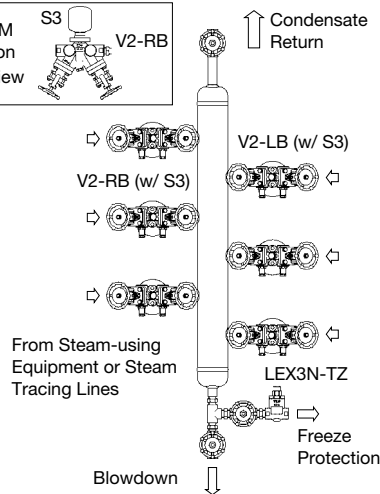
Number of station connections in bold are standard

**Station Package**

**Steam Distribution Manifold VSDM**



**Condensate Collection Manifold VCCM**



**Recommended Accessory Equipment:**

**V2-RB/V2-LB Trap Station**

- Durable built-in bellows sealed valves for inlet and outlet
- Good seal with stellite hardened surfaces on valve plug and valve seat
- Rugged stainless steel body construction for a long service life
- Two integral screens ensure trouble-free operation
- QuickTrap 2-bolt universal connection permits trap unit replacement in minutes

**S3\* QuickTrap**

Free float steam trap with universal connection and three-point seating

- Three-point seating ensures a steam-tight seal, even under no-load conditions
- Unique free float eliminates concentrated wear, ensuring long reliable life
- Durable thermostatic air vent for exceptionally fast start-up

**LEX3N-TZ Temperature Control Steam Trap**

- Optional freeze protection provided by the LEX3N-TZ self-draining capability

\* Steam trap S3 shown; other recommended steam trap units include S5, S5H, P32, L21, L32 and X1

A wide variety of steam traps and other accessory equipment are available, contact TLV for details.

**TLV CORPORATION**

13901 South Lakes Drive, Charlotte, NC 28273-6790  
 Phone: 704-597-9070 Fax: 704-583-1610  
 E-mail: [tlv@tlvengineering.com](mailto:tlv@tlvengineering.com)  
 For Technical Service 1-800 "TLV TRAP"



Manufactured for **TLV CORPORATION**  
 by a certified, independent fabricator.