

NEW SIMATIC Panel PC 477B-HMI/RTX

The SIMATIC Panel PC 477B is a compact device and combines ruggedness and high reliability with the openness of a PC. The following software is already pre-configured and ready to start up:

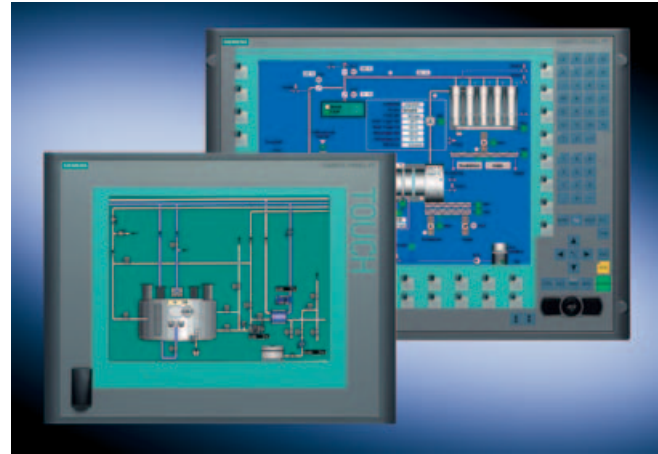
- the software PLC WinAC RTX 2005 SP2,
- the Runtime HMI software WinCC flexible 2007, as well as
- the SOFTNET S7-LEAN communications package.

The SIMATIC Panel PC 477B-HMI/RTX is the perfect, ready-to-run solution, wherever HMI and control tasks are to be executed on a compact device. As a scalable, expandable device it is ideal if

- used direct at the machine and
- flexible adaptation to the application

are required.

The Panel PC 477B-HMI/RTX is available with different processors and fronts in 12", 15" and 19" displays with touchscreen or keyboard operation. All versions are available from stock. The installation depth of just 75 mm (100 mm for 19" Touch) allows the Panel PC 477B-HMI/RTX to be operated even where space is restricted.



SIMATIC Panel PC 477B-HMI/RTX with touchscreen or key operation

Technical specifications

Panel PC 477B-HMI/RTX

| Feature | Panel PC 477B-HMI/RTX |
|---|---|
| Processor | Intel Celeron M 1.0 GHz |
| RAM | 1 GB |
| Compact Flash | 1 GB, 2 GB, 4 GB |
| Displays | 12" TFT color display 800 x 600 (key or touch) 15" TFT color display 1024 x 768 (key or touch) 19" TFT color display 1280 x 1024 (touch) |
| Retentivity | 128 KB without UPS |
| Interfaces | 1 x PROFIBUS 2 x Industrial Ethernet 5 x USB 2.0 (1x front panel) |
| PC cards | Max. 3 x PCI-104 |
| Operating system | Windows XP Embedded SP2 |
| Software PLC | WinAC RTX 2005 SP2 |
| HMI software | WinCC flexible 2007 with 128, 512 or 2048 Power Tags incl. archives and recipes |
| Software packages included in the scope of supply | SOFTNET-S7 Lean incl. OPC-Server |
| Order No. group | 6ES7 676- |

The Software PLC WinAC RTX 2005 SP2 and the HMI software WinCC flexible 2007 are already installed and pre-configured:

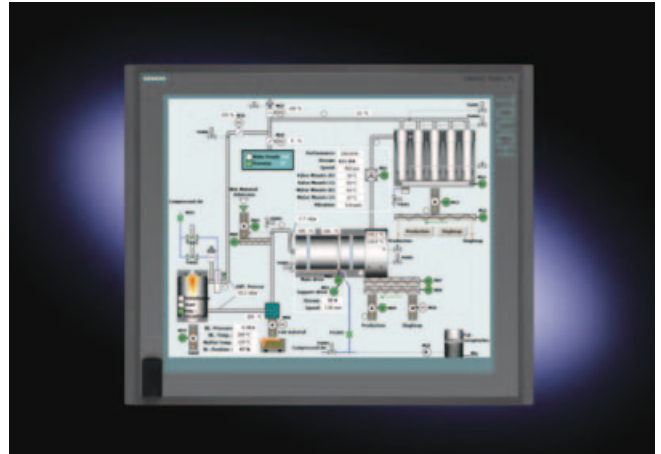
- The Software PLC WinAC RTX 2005 SP2 handles the actual control task and execution of the user program.
- WinCC flexible 2007 Runtime allows machine-level visualization of up to 2048 process variables including archives and recipes.

As in the case of the Microbox 427B-RTX, process values are accessed via the integrated OPC server and C/C++ programs can also be integrated - even under real-time conditions. Please refer to Microbox 427B-RTX for more details.

Up to 128 KB of retentive data is stored on an integral, non-volatile memory without an uninterruptible power supply (UPS). Full retentivity of all process values can be achieved with a commercially available UPS.

The visualization is configured using the WinCC flexible 2007 engineering software. The simple user interface of WinCC flexible 2007 permits very efficient operation:

- Libraries offer preassembled objects and reusable faceplates
- Intelligent tools permit the project management and the graphic configuration
- Extensive support of multilingual configurations



SIMATIC Panel PC 477B-HMI/RTX with 19" display

Highlights

- Fan-free and diskless hardware platform
- Software PLC with real-time and deterministic capability
- HMI runtime software with archives and recipes
- Controlling and visualizing with touchscreen or membrane keyboard
- Data retentivity through integrated SRAM

The Panel PC 477B-HMI is an additional variant of the Panel PC 477B. It includes the runtime part of the WinCC flexible 2007 HMI software but does not include the WinAC RTX 2005 SP2 software PLC.