

Lexus II

GWA & GSA

GAS-FIRED BOILERS



GWA

GWA Warranty

- Limited lifetime warranty on heat exchanger
- One-year limited warranty on parts

GSA Warranty

- Ten-year limited warranty on boiler sections
- One-year limited warranty on parts

Lexus II Gas-fired Boilers feature:

Wayne's Lexus II gas-fired boilers are available in both water and steam models. They are factory tested, packaged, chimney vented, and are of rugged construction that is designed for performance and reliability.

- Easy service with one-piece access door and all controls in easy reach
- Insulated heavy-gauge steel jacket
- 24-VAC combination gas valve

Lexus II Gas-fired Water Boilers feature:

- 52,000 to 245,000 Btuh input; Natural or LP gas
- High efficiency flue baffles, stainless steel burners and automatic vent damper
- Cast iron sections with built-in air separator
- High temperature limit control

Lexus II Gas-fired Steam Boilers feature:

- 75,000 to 250,000 Btuh input; Natural or LP gas
- High efficiency, with generous heating surface and automatic vent damper
- Cast iron sections
- Constructed for long life, with integral cast iron legs, integral draft diverter, insulated heavy-gauge steel jacket, and heavy-gauge aluminized steel flue collector



GSA



DOE

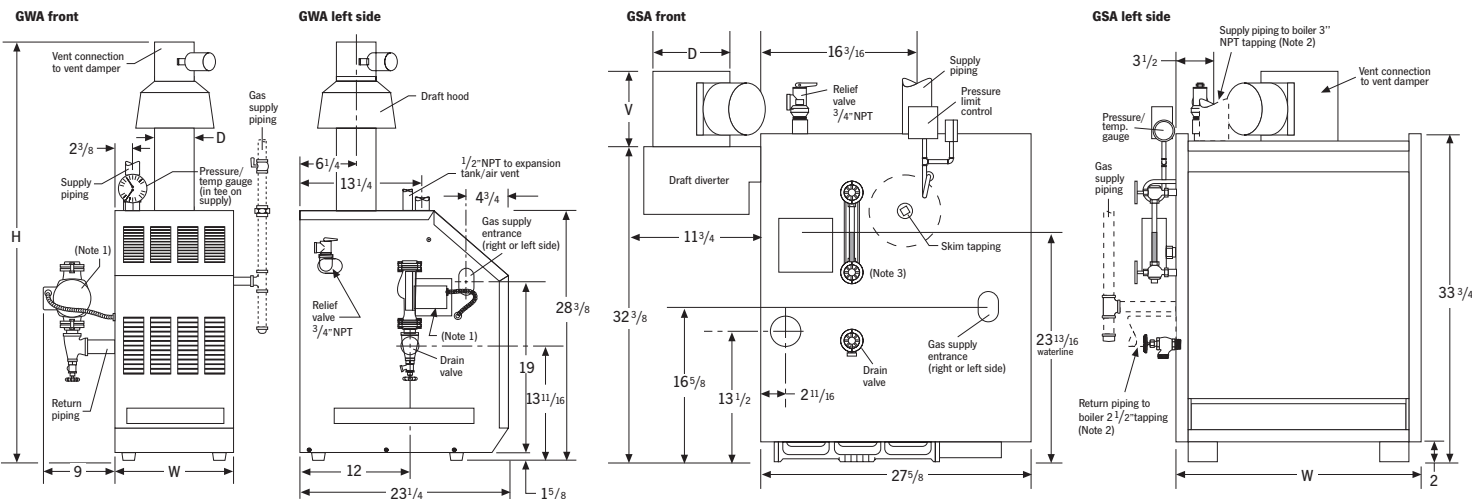
Specifications

GWA & GSA

GAS-FIRED BOILERS

Lexus II Gas-fired Water Boiler

Boiler model number	0-2,000 ft. altitude		2,000-4,500 ft. altitude (Canada) ²		Net I=B=R ratings	Boiler water content	DOE seasonal efficiency % A.F.U.E. ¹			Chimney breaching size	Circulator flange size
	Input	Output	Input	Output			N-S	L-S	N-I		
GWA-052	52,000	41,600	46,800	37,400	37,000	1.5	80.2	80.4	83.0	4" I.D.	3/4"
GWA-070	70,000	56,400	63,000	50,400	50,000	1.5	80.1	80.7	82.2	4" I.D.	1"
GWA-105	105,000	84,000	94,500	75,600	77,000	2.1	80.4	81.4	82.9	5" I.D.	1"
GWA-140	140,000	112,800	126,000	100,800	102,000	2.7	80.4	81.5	82.5	6" I.D.	1"
GWA-175	175,000	140,000	157,000	126,000	126,000	3.3	80.5	81.6	82.2	6" I.D.	1 1/4"
GWA-210	210,000	168,000	189,000	151,200	151,000	3.8	80.5	81.7	81.8	7" I.D.	1 1/4"
GWA-245	245,000	196,000	220,000	176,400	176,000	4.4	80.5	81.8	81.4	7" I.D.	1 1/2"



Note 1: Boiler supply and return tapings are 1 1/2" NPT. Circulator flanges shipped with boiler are sized to recommended pipe size listed in specifications table above. Boiler circulator is shipped loose. Circulator may be mounted on boiler supply or return piping.

Note 2: Boiler supply and return tapings can be found in the information above. See Boiler Manual for recommended system supply and return piping sizes.
Note 3: If field installing a float-type low water cutoff, it must be connected using only the gauge glass tapings. No other location is acceptable.

Lexus II Gas-fired Steam Boiler

Boiler model number	0-2,000 ft. altitude		2,000-4,500 ft. altitude (Canada) ²		Net I=B=R ratings ³		Boiler water content	DOE seasonal efficiency ¹		Chimney breaching size
	Input	Output	Input	Output	Square ft.	Btuh		Gallons	Natural	
GSA-075	75,000	61,000	67,500	54,000	192	46,000	8.4	79.5	79.5	5" I.D.
GSA-100	100,000	81,000	90,000	72,000	254	61,000	8.4	79.1	79.7	5" I.D.
GSA-125	125,000	101,000	112,500	90,000	317	76,000	9.8	79.8	80.3	6" I.D.
GSA-150	150,000	122,000	135,000	108,000	383	92,000	9.8	79.2	80.3	6" I.D.
GSA-175	175,000	142,000	157,500	126,000	446	107,000	11.2	80.1	81.1	7" I.D.
GSA-200	200,000	163,000	180,000	144,000	508	122,000	11.2	79.3	81.0	7" I.D.
GSA-250	250,000	203,000	225,000	180,000	633	152,000	12.6	79.4	81.6	8" I.D.

- Based on standard test procedures prescribed by the United States Department of Energy.
- Contact your dealer regarding information and parts for high altitude applications.
- Net I=B=R ratings are based on net installed radiation of sufficient quantity for the requirements of the building and nothing need be added for normal piping and pickup. Ratings are based on a piping and pickup allowance of 1.333. Additional allowance should be made for unusual piping and pickup loads.

GSA Equipment

- Factory-assembled cast iron sections
- Integral horizontal draft diverter
- Gauge glass and guard assembly
- Pressure gauge and siphon assembly
- Pressure limit control
- Probe type low water cutoff
- 15 PSIG ASME relief valve
- Drain valve
- Constant-burning pilot system, thermally-supervised

GWA Equipment

- Vertical draft hood
- Electrical junction box combination relay receptacle and 40VA transformer and plug-in circulator relay
- Taco 007 circulator
- 30 PSIG ASME relief valve
- Combination pressure/temp. gauge

Standing Pilot Models

- Constant-burning pilot system, thermally-supervised

Intermittent Pilot Models

- Spark-ignited (intermittent) pilot system
- Electronic ignition/flame supervisory

GWA Boilers are CSA design certified for installation on combustible flooring (do not install on carpeting)

Boiler model No.	H Height over damper	V Damper height	W Jacket width	D Flue diameter
GWA-052	45 3/8"	-	10"	4"
GWA-070	52 3/8"	-	10"	4"
GWA-105	54 3/8"	-	13"	5"
GWA-140	57 7/8"	-	16"	6"
GWA-175	60 7/8"	-	19"	6"
GWA-210	62 1/8"	-	22"	7"
GWA-245	64 7/8"	-	25"	7"
GSA-075	-	6"	17"	5"
GSA-100	-	6"	17"	5"
GSA-125	-	6 1/2"	21 1/4"	6"
GSA-150	-	6 1/2"	21 1/4"	6"
GSA-175	-	9"	25 1/2"	7"
GSA-200	-	9"	25 1/2"	7"
GSA-250	-	9 1/2"	29 3/4"	8"