



ASME Compression Tanks Plain Steel Compression Tanks

- Absorbs the expansion forces of system water and provides proper pressurization under varying operating conditions
- Meets ASME Section VIII, Division 1 Standards
- Tanks Sizes: 15-505 gallons
- Standard Working Pressures: 150 PSI for 15-100 gallon tanks
125 PSI for 120-505 gallon tanks
- Higher Pressure Vessels Available (up to 300 PSI)
- High Maximum Design Temperature 650°F
- Gauge Glass Tappings are Standard
- Custom Tanks with Additional Tappings and Alternative Materials of Construction are Available

Bell & Gossett®



ITT Industries
Engineered for life

Plain Steel ASME Compression Tanks

DESCRIPTION

The plain steel compression tank absorbs the expansion forces of the system water and provides proper pressurization under varying operating conditions. When used with Airtrol® Fittings, it provides positive air control.

CONSTRUCTION

These tanks are constructed of carbon steel in accordance with Section VIII, Division 1 of the ASME Boiler and Pressure Vessel Code - and so stamped.

PERFORMANCE LIMITATIONS

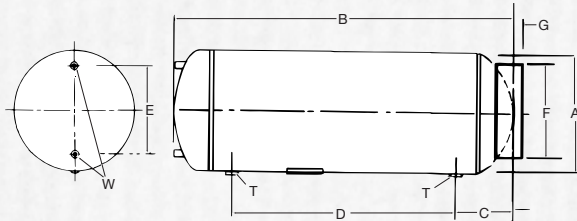
Maximum Design Pressure:
 Model 15 through 100150 PSIG (1034kPa)
 Model 120 through 505125 PSIG (862kPa)

Maximum Design Temperature:
 All Models 650°F (343°C)

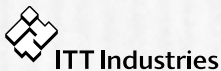
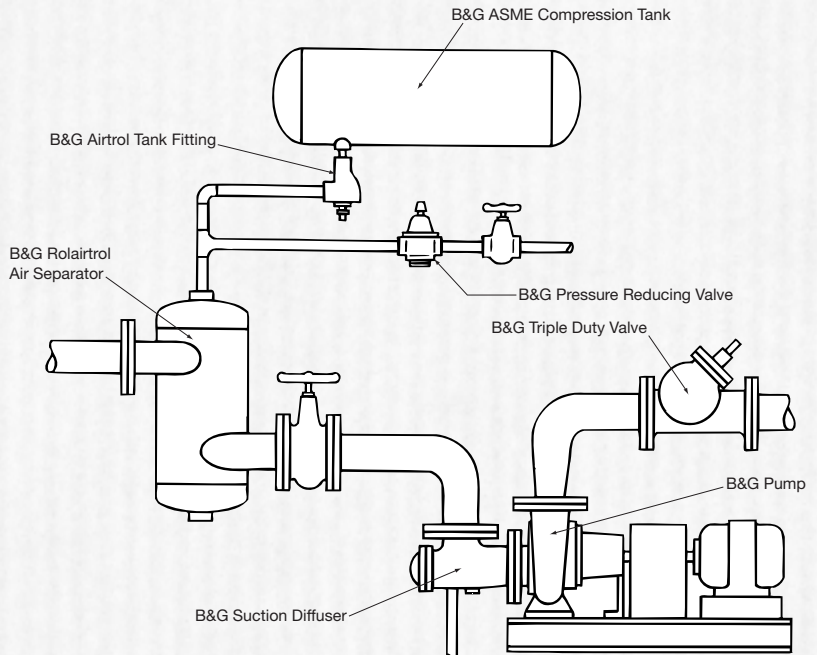
Dimensions: Gallons (Ltrs.), Inches (mm), Weights: LBS (KG)

PART NUMBER	VOLUME (GALLONS)	REQ'D AIRTROL TANK FITTING	A DIAMETER	B LENGTH	C	D	E	F	G	TAPPINGS NPT		APPROX. SHIPPING WEIGHT
										T	W	
116029	15 (57)	ATF-12	12 (305)	33 (838)	7 (178)	19 (483)	8 (203)	11 1/2 (292)	1 1/8 (29)	1	1/2	50 (23)
116030	24 (91)	ATF-12	12 (305)	51 (1295)	7 (178)	37 (940)	8 (203)	11 1/2 (292)	1 1/8 (29)	1	1/2	72 (33)
116031	30 (114)	ATF-12	14 (356)	48 (1219)	8 3/8 (213)	31 1/4 (794)	10 (254)	12 (305)	1 3/8 (35)	1	1/2	80 (36)
116032	40 (151)	ATF-12	14 (356)	63 (1600)	8 3/8 (213)	46 1/4 (1175)	10 (254)	12 (305)	1 3/8 (35)	1	1/2	104 (47)
116033	60 (227)	ATF-16	16 (406)	72 (1829)	9 1/4 (235)	53 1/2 (1359)	12 (305)	14 (356)	1 (25)	1	1/2	134 (61)
116034	80 (303)	ATF-20	20 (508)	62 (1575)	10 (254)	42 (1067)	16 (406)	18 (457)	2 5/16 (59)	1	1/2	160 (73)
116035	100 (379)	ATF-20 or ATFL	20 (508)	78 (1981)	10 (254)	58 (1473)	16 (406)	18 (457)	2 5/16 (59)	1	1/2	186 (84)
116036	120 (454)	ATF-24 or ATFL	24 (610)	65 (1651)	11 1/8 (283)	42 3/4 (1086)	20 (508)	22 (559)	1 1/2 (38)	1	1/2	217 (98)
116037	135 (511)	ATF-24 or ATFL	24 (610)	72 (1829)	11 1/8 (283)	49 3/4 (1264)	20 (508)	22 (559)	1 1/2 (38)	1	1/2	230 (104)
116038	175 (662)	ATFL	30 (762)	62 1/4 (1581)	13 1/2 (343)	35 1/4 (895)	22 (559)	26 (660)	1 3/8 (35)	1 1/2	1/2	320 (145)
116039	220 (833)	ATFL	30 (762)	77 (1956)	13 1/2 (343)	50 (1270)	22 (559)	26 (660)	1 3/8 (35)	1 1/2	1/2	370 (168)
116040	240 (908)	ATFL	30 (762)	84 (2134)	13 1/2 (343)	57 (1448)	22 (559)	26 (660)	1 3/8 (35)	1 1/2	1/2	420 (191)
116041	305 (1154)	ATFL	30 (762)	105 3/4 (2686)	13 1/2 (343)	78 3/4 (2000)	22 (559)	26 (660)	1 3/8 (35)	1 1/2	1/2	482 (219)
116042	400 (1514)	ATFL	36 (914)	93 (2362)	14 3/4 (375)	63 1/2 (1613)	28 (711)	30 (762)	1 (25)	1 1/2	1/2	656 (298)
116840	505 (1911)	ATFL	36 (914)	116 (2946)	14 3/4 (375)	86 1/2 (2197)	28 (711)	30 (762)	1 1/8 (29)	1 1/2	1/2	745 (338)

Dimensions subject to change. Not to be used for construction purposes.



TYPICAL APPLICATION



Bell & Gossett

USA
 Bell & Gossett
 8200 N. Austin Avenue
 Morton Grove, IL 60053
 Phone: (847) 966-3700
 Facsimile: (847) 966-9052
 www.bellgossett.com



INTL.
 Bell & Gossett / Export Dept.
 8200 N. Austin Avenue
 Morton Grove, IL 60053
 Phone: (847) 966-3700
 Facsimile: (847) 966-8366
 www.bellgossett.com

CANADA
 Fluid Products Canada
 55 Royal Road
 Guelph, Ontario,
 N1H 1T1, Canada
 Phone: (519) 821-1900
 www.itfpc.ca