

# Lexus II

OWB/T & OSB/T

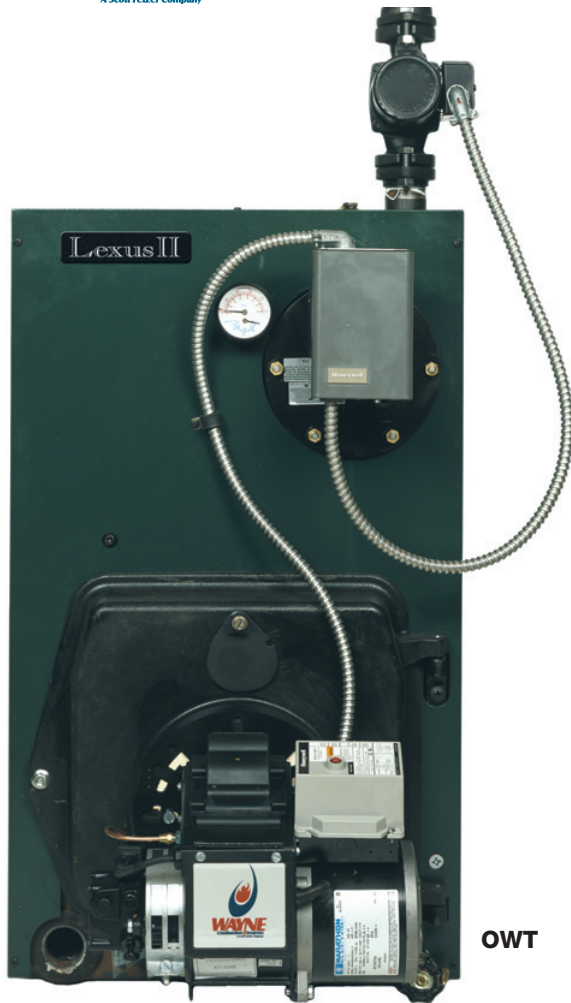
OIL-FIRED BOILERS



## Lexus II Oil-Fired Boilers feature:

Wayne's Lexus II oil-fired boilers are available in both water and steam models. The boilers are factory tested and packaged, less burner, and feature:

- Easy service, with swing-away burner door, low draft loss, top access cleanout cover and plug-in wiring harness
- Highly efficient flame retention burner, solenoid valve and solid state ignitor
- Rear flue outlet
- Cast iron sections with built-in air separator
- Insulated heavy-gauge steel jacket
- Optional tankless heater
- 1.00 to 2.00 GPH input



OWT

### OWB/T Warranty

- Limited lifetime warranty on heat exchanger
- 3-year limited warranty on parts



OSB

### OSB/T Warranty

- 10 year warranty on cast iron sections
- 3-year limited warranty on parts

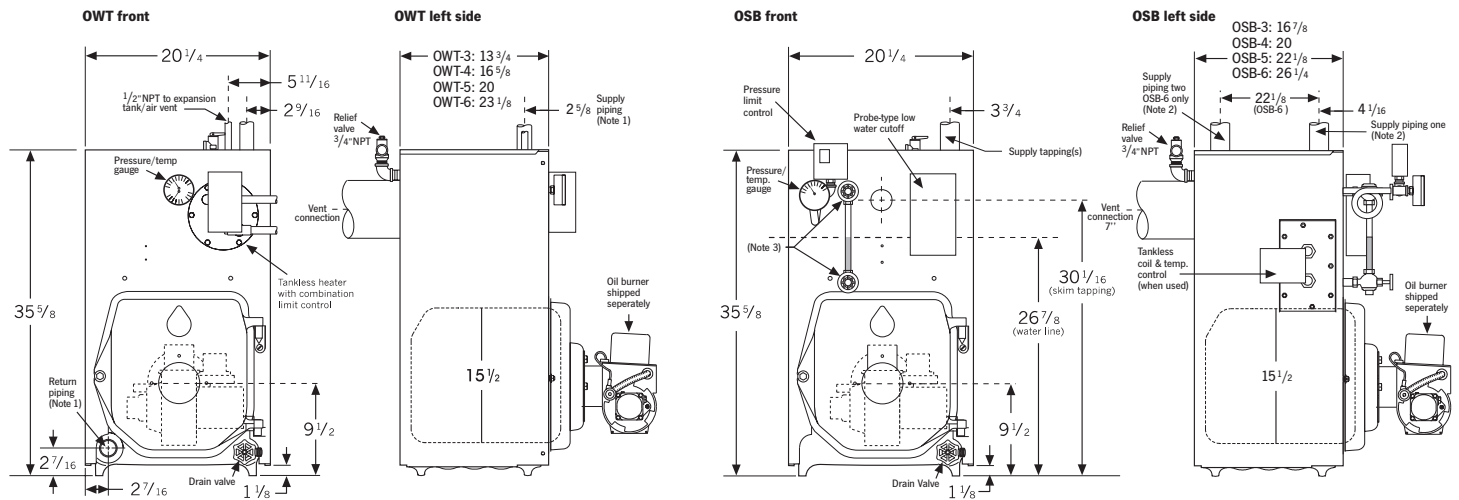
# Specifications

OWB/T & OSB/T

OIL-FIRED BOILERS

## LEXUS II Oil-fired Water Boiler

Boiler model number	I=B=R burner capacity GPH <sup>1</sup>	Input MBH	DOE heating capacity MBH <sup>2</sup>	Net I=B=R ratings		DOE seasonal efficiency % AFUE	Flue connection size		Boiler water content Gallons	Draft loss through boiler Inches W.C.	Circulator flange size (Recommended supply & return pipe size, NPT)	
				MBH <sup>3</sup>	MBH <sup>3</sup>		Round	Rectangular				
OWT-3-100	1.00	140	116	101		82.2	7"	8"x8"	6"	11.0	.000	1 1/4"
OWT-4-125	1.25	175	145	126		81.7	7"	8"x8"	6"	13.4	.010	1 1/4"
OWT-5-150	1.50	210	174	151		81.3	7"	8"x8"	7"	15.9	.010	1 1/2"
OWT-5-165	1.65	250	191	166		81.2	7"	8"x8"	7"	15.9	.010	1 1/2"
OWT-6-200	2.00	280	231	201		80.7	7"	8"x8"	7"	18.4	.005	1 1/2"



**Note 1:** Boiler supply and return tappings are 1 1/2" NPT. Circulator flanges shipped with boiler are sized to recommended pipe size listed in specifications above. Boiler circulator is shipped loose. Circulator may be mounted on either boiler supply or return piping.

**Note 2:** Boiler supply tappings are 2 1/2" NPT. Return tapping is 1 1/2" NPT on all boiler sizes. Install one 2 1/2" supply riser for models OSB-3, OSB-4 and OSB-5; two 2 1/2" supply risers for OSB-6. **Note 3:** If field installing a float low water cutoff, it must be installed in the gauge glass tappings. No other tappings are usable.

## LEXUS II Oil-fired Steam Boiler

Boiler model number	I=B=R burner capacity GPH <sup>1</sup>	Input MBH	DOE heating capacity MBH <sup>2</sup>	Net I=B=R steam ratings		DOE seasonal efficiency % AFUE	Flue outlet size	Minimum I=B=R chimney size (x 15' high)		Boiler water content Gallons	Draft loss through boiler Inches W.C.
				Sq. Ft. <sup>3</sup>	MBH <sup>3</sup>			Round	Rectangular		
OSB-3-100	1.00	140	116	363	87	82.1	7"	8"x8"	6"	10.7	.000
OSB-4-125	1.25	175	145	454	109	81.7	7"	8"x8"	6"	12.5	.010
OSB-5-150	1.50	210	175	546	131	81.4	7"	8"x8"	7"	14.2	.010
OSB-6-200	2.00	280	232	725	174	81.4	7"	8"x8"	7"	16.0	.015

Boiler model	Tankless heater	I=W=H Intermittent draw rating
OWT-3	WT-11	3.00 GPM (50° F to 140° F)
OST-3	35-S-29	3.25 GPM (40° F to 140° F)
OWT-4	WT-14	3.75 GPM (40° F to 140° F)
OST-4	35-S-29	3.50 GPM (40° F to 140° F)
OWT-5	WT-14	4.00 GPM (40° F to 140° F)
OST-5	35-S-29	3.75 GPM (40° F to 140° F)
OWT-6	WT-14	4.25 GPM (40° F to 140° F)

- Based on 140,000 Btu/h per gallon, #2 fuel oil.
- Based on standard test procedures prescribed by the United States Department of Energy, with combustion conditions of 13% CO<sub>2</sub> and -0.02" W.C. draft.
- Net I=B=R ratings are based on net installed radiation of sufficient quantity for the requirements of the building and nothing need be added for normal piping and pickup. Ratings are based on a piping and pickup allowance of 1.15. Additional allowances should be made for unusual piping and pickup loads.

### OWB and OSB Standard Equipment

- Factory assembled cast iron sections including aluminized steel flue collector, swing-away burner mounting door, with refractory blanket and recessed target wall in combustion chamber
- Flame-retention oil burner
- Drain valve
- Barometric damper

### OWB Equipment

- 30 PSIG ASME relief valve
- Taco 007 circulator
- High limit control with circulator relay
- Built-in air separator
- Combination pressure/temperature gauge

### OSB Equipment

- 15 PSIG ASME relief valve
- High limit pressure control
- Probe low water cutoff
- Pressure gauge
- Siphon
- Gauge glass, gauge cocks and guards

Tankless heater tappings are 1/2" NPT, with 3/4" NPT center tapping for tankless temperature control/limit.