



ARTIST ELITE®

**5000 Series**

**Wireless Control Interface v. 1.0**

---

*Installation and Operation*

<b>Introduction .....</b>	<b>4</b>
Our assumptions about you .....	4
Notice to novice users .....	4
What this manual covers .....	4
How this manual is organized .....	4
Where to go for further assistance .....	4
<b>Minimum Requirements .....</b>	<b>5</b>
<b>Tasks the Software Performs .....</b>	<b>5</b>
System features the software monitors and controls .....	5
System features the software monitors (but does not control) .....	5
Software tools .....	5
<b>Installing the Hardware .....</b>	<b>6</b>
Master and slave receivers .....	6
General instructions for hardware installation .....	6
To connect one or more AEW-R5200 receivers to an existing network to which your computer is also connected .....	7
To connect one or more AEW-R5200 receivers using DHCP-supporting router .....	7
To connect a single AEW-R5200 directly to a computer's Ethernet card .....	8
To connect multiple receivers via link cables (for systems that include AEW-R4100 receivers, or for systems without access to multiple Ethernet connections) .....	9
To link receivers via link cables .....	9
To set up remote access to the AEW-R5200 via the Internet .....	10
<b>Installing and Using the Software .....</b>	<b>10</b>
Installing the software .....	10
Getting started .....	10
Navigating the GUI .....	12
Channel Detail Window .....	12
Changing Receiver Name .....	12
Changing Frequency .....	12
Changing Squelch .....	12
Changing Display Name .....	12
Changing Lock Setting .....	12
Changing Meter Hold Setting .....	12
Changing Antenna Power Setting .....	12
Muting/Unmuting System .....	12
Navigating the File Menu .....	13
Open Environment .....	13
Save Environment .....	13
Receiver Configuration .....	13
To change the order of display of a receiver .....	13
To enable or disable a receiver .....	13
Network Configuration .....	13
To add a remote receiver by entering its IP address .....	13
Exit .....	13

- Navigating the Tools Menu .....14
  - IntelliScan™ .....14
  - Spectrum Analyzer.....14
  - Coverage Test .....14
  - Reconnect to Network.....14
- Navigating the View Menu .....15
  - Channel Display .....15
  - Name Display.....15
- Navigating the Help Menu .....15
  - Contents .....15

## Introduction

Thank you for choosing an Audio-Technica professional wireless system. You have joined thousands of other satisfied customers who have chosen our products because of their quality, performance, and reliability. This Audio-Technica wireless microphone system is the successful result of years of design and manufacturing experience.

This manual will guide you through the process of installing and navigating the Artist Elite® Wireless Control Interface for Microsoft® Windows®. The software (which may also be referred to as "AEWCI" in this manual) enables you to monitor and control many of the system features using your PC-compatible computer. Use this manual in conjunction with the AE Wireless system manual included with the receiver/system.

### Our assumptions about you

- You have working knowledge of wireless microphone systems, *or* you have thoroughly reviewed the product manual and are familiar with the product's operation.
- You have strong computer skills (i.e., you can install and run software, *and* you have good working knowledge of your operating system).
- You have access to a network on which you can set up this system, *or* you have the materials to build a separate network using your computer, a cable/DSL router (for multiple receivers), and one or more 5000 Series receiver units.

### Notice to novice users:

You should read this manual, as well as the system/receiver manual, from start to finish and follow the instructions carefully until you are familiar with the product. Experienced Artist Elite Wireless users may scan the Table of Contents for the topics in which they are interested.

### What this manual covers

This manual takes you from the minimum requirements for installing the software through setting up and running the system with a network. It answers some general questions about configuring your system. Finally, it discusses each function of the software in detail.

These instructions *do not cover* procedures that are different for each user and usually must be handled by an IT professional. The manual does, however, give some general guidelines for networking and for accessing the system over the Internet.

### How this manual is organized

The manual starts with a description of the minimum requirements for running the software and guides you through the process of installing and running it:

1. Software and hardware minimum requirements
2. Instructions for installing the hardware
3. Instructions for running the software
4. Instructions for navigating the features

### Where to go for further assistance

If you encounter questions or problems that this manual does not address, you may find additional information on using wireless systems here:

<http://www.audio-technica.com/using/wireless/index.html>

Audio-Technica maintains a Web page with software downloads. The AEWCI software is available for download from <http://www.audio-technica.com/using/software.html>



**Caution:** Use of this software on a previously networked computer should be undertaken with care. Consult your network administrator or other professional before installing the AEW-R5000 on an existing network.



**Warning:** Never connect a cable/DSL router to an existing network without first consulting your network administrator. The router may reassign IP addresses being used by devices on the network and may cause the devices or the entire network to stop functioning.

## Minimum Requirements

### To run Java™ 2 Runtime Environment on a PC-compatible computer

Microsoft® Windows® 98 or later, including the following versions:

- 98 (1st or 2nd Edition)
- NT 4.0 with Service Pack 5 or higher
- ME
- XP Home
- XP Professional
- 2000 Professional with Service Pack 2 or higher
- 2000 Server with Service Pack 2 or higher
- 2000 Advanced Server with Service Pack 2 or higher

Pentium™ Processor running at a minimum 166 MHz  
100 MB hard disk space recommended  
64 MB memory  
Ethernet card

Set your monitor resolution to a *minimum of 1024x768 pixels* for best results. Lower-resolution settings (such as 800x600) allow for fewer channel strips to appear; as a result, you may need to scroll to see your entire environment.

## Tasks the Software Performs

The Artist Elite® Wireless Control Interface automates many of the tasks FOH engineers and other professionals perform on a regular basis. Most of the features that can be monitored and controlled by the receiver and transmitter can also be monitored and controlled in real time by the software.

### System features the software monitors and controls:

- Receiver Name (page 12)
- Receiver Frequency (page 12)
- Squelch Level (page 12)
- Display of Transmitter Name or Receiver Name (page 12)
- Receiver Lock Status (page 12)
- Meter Hold (page 12)
- Antenna Power (page 12)
- Receiver Mute (page 12)
- Environment Open and Save (page 13)

### System features the software monitors (but does not control):

- Receiver RF Levels (for AEW-R5200 linked via Ethernet only)
- Receiver AF Level (for AEW-R5200 linked via Ethernet only)
- Receiver IP Address
- Receiver Link Address
- Transmitter Name
- Transmitter Type (Handheld or UniPak™)
- Handheld Capsule Type (Dynamic or Condenser)
- UniPak Input Type (Mic or Instrument)
- Transmitter Gain Trim Setting
- Transmitter Power Level (High or Low)
- Transmitter Battery Condition
- Transmitter Lock Status
- Transmitter Mute Status

### Software tools:

- IntelliScan™ (page 14)
- Spectrum Analyzer (page 14)
- Coverage Test (page 14)
- Reconnect to Network (page 14)

## Installing the Hardware

Depending on how the AEW-R5200 receiver will be used, the installation and hookup process differs. For most applications, however, setting up the AEW-R5200 is a simple process.

For example, if several receivers will be taken on tour and controlled via a computer, it will be necessary to **set up a separate network** for use by only the computer and receiver system. If, however, a receiver will be used in a permanent installation in a building with its own network, it might be necessary to **set up the receiver to work with the existing network**.

### Master and slave receivers

Because the AEW-R5200 unit houses two channels, channel #1 is always the **Master**, and channel #2 is always **Slave\_1** of a two-channel system comprising that single AEW-R5200 unit. Any AEW-R5200 units that are part of a system **connected by Ethernet cables** will contain one Master and one slave channel per unit.

AEW-R5200 receivers will work with other AEW-R5200 and AEW-R4100 units; up to 19 receiver channels may work together, depending upon clear frequencies available. One AEW-R5200 can act as the Master receiver for multiple AEW-R5200 and AEW-R4100 receivers, which, if connected using the included **link cables**, all become slaves.

Note: Do not connect an Ethernet cable to the Ethernet port and a link cable to the AEW-R5200's OUT jack at the same time.

### General instructions for hardware installation

Following are instructions for connecting receivers to an existing network and for connecting receivers to a computer without a network.

If your network supports DHCP (which automatically sets IP addresses for devices on the network), you can use an Ethernet hub to connect one or more AEW-R5200 units to an existing network that is also connected to your computer.

If you do not have access to a network connection (such as on tour when traveling with a laptop computer), the AEWCI software can still be used with an Ethernet-connected AEW-R5200 receiver. Receivers can be connected via DHCP-supporting router or via the computer's Ethernet card.



**Warning:** The Ethernet card in this receiver is programmed to search for a DHCP server. If it does not locate one, it automatically sets the receiver to a **default IP address of 10.20.30.40**. Connecting multiple AEW-R5200 receivers to a non-DHCP network would result in **all** receivers being set to IP address 10.20.30.40, causing contention.

**We do not recommend using the AEW-R5200 on a non-DHCP network.** If your network does not support DHCP, ask the network administrator for assistance. He or she will need to determine whether any equipment on the network is using the IP address 10.20.30.40. If the address is available, it is possible that one receiver may work on the network; however, this should be determined by the network administrator.

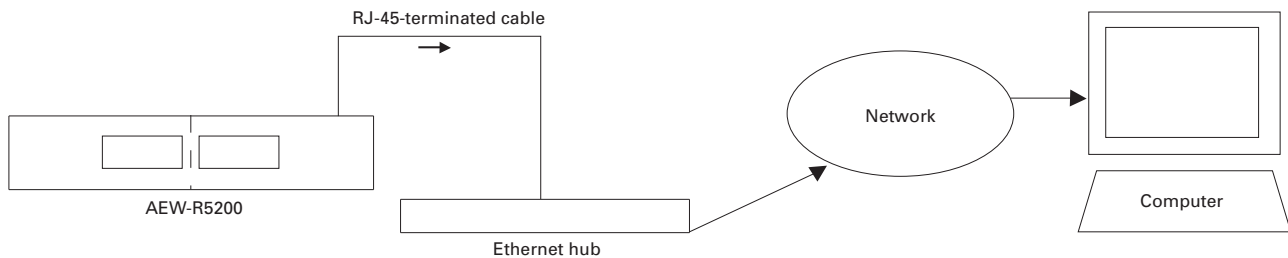


Figure A. Connecting the AEW-R5200 to a computer and an existing DHCP-supporting network.

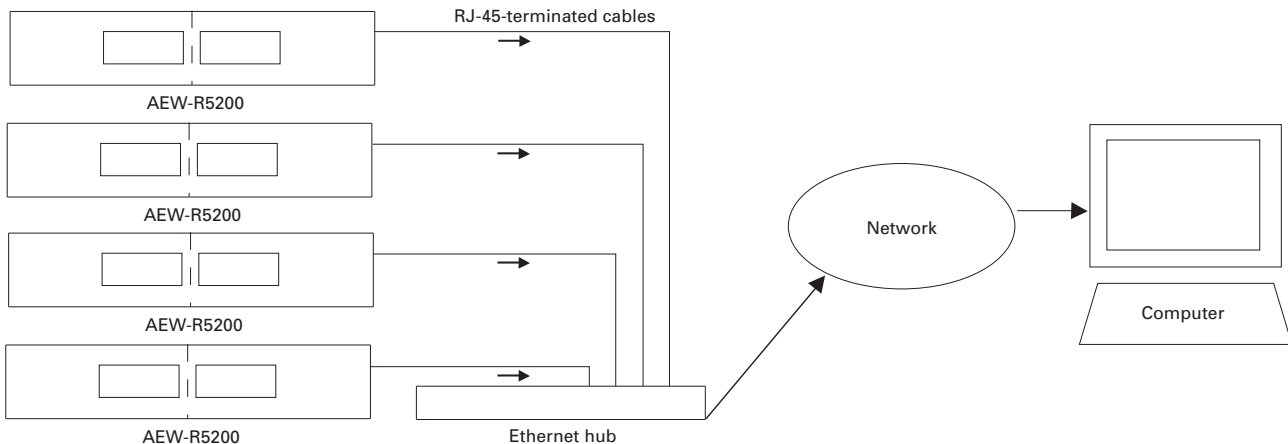


Figure B. Connecting multiple AEW-R5200 units to a computer and an existing DHCP-supporting network.

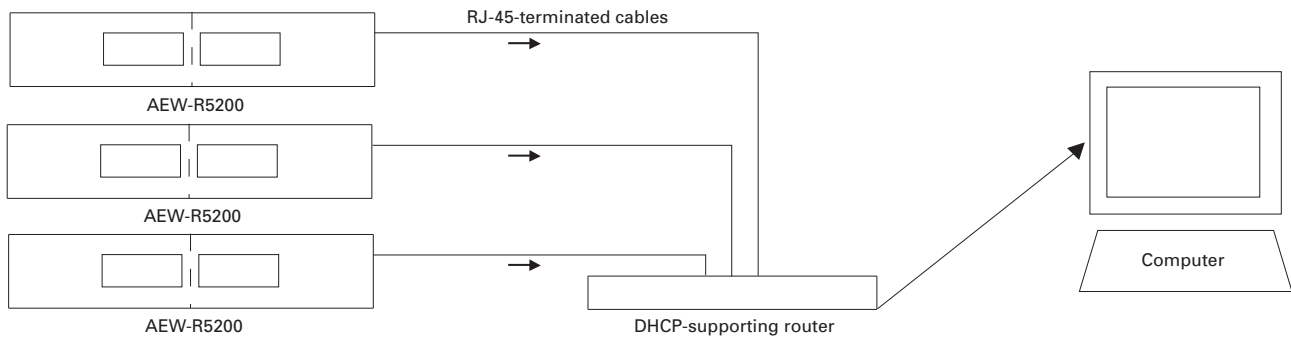
**To connect one or more AEW-R5200 receivers to an existing network to which your computer is also connected:**

You will need an Ethernet hub and sufficient Ethernet cables to connect all receivers to the hub, plus one cable to connect the hub to the network.

1. Check with the network administrator to make certain the network you are connecting to supports DHCP. If it does not, ask the network administrator for assistance before proceeding.
2. Making certain that all hardware is turned off, connect the hub to your network and to the AEW-R5200(s) by running RJ-45-terminated cables from the receiver(s) and network to the hub. (See Figures A and B on page 6.)
3. Power the hub, power the receivers as instructed in *Installing and Using the Software* (page 10), and then power the computer, ensuring that all connections are live.
4. Run the software on the connected computer. The AEW-R5200 units will obtain their own IP addresses.

**To connect one or more AEW-R5200 receivers using DHCP-supporting router:**

1. In Windows, open the *Network and Dial-up Connections* (or *Network Neighborhood* for Win 98) window and create a LAN or High Speed Internet connection to your network card.
2. Under *Networking*, click on *Internet Protocol (TCP/IP) > Properties*.
3. Set TCP/IP settings to *Obtain IP address automatically*.
4. Connect a single AEW-R5200 receiver to a DHCP-supporting router that is connected to the computer's Ethernet card (see Figure C).
5. Power the receiver as instructed in *Installing and Using the Software* (page 10), and then run the software on your connected computer.  
Use the same method for connecting multiple AEW-R5200 units via DHCP-supporting router.

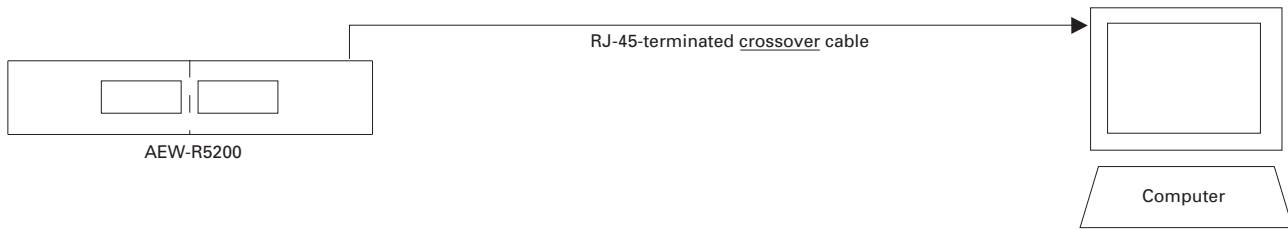


**Figure C. Connecting one or more AEW-R5200 units via DHCP-supporting router to a computer not on a network.**

**To connect a single AEW-R5200 directly to a computer's Ethernet card:**

1. In Windows, open the *Network and Dial-up Connections* (or *Network Neighborhood* for Win 98) window and create a LAN or High Speed Internet connection to your network card.
2. Under *Networking*, click on *Internet Protocol (TCP/IP) > Properties*.
3. Click on *Use the following IP address*, and configure the TCP/IP settings as follows:
  - IP address: 10.\*.\* (where \*.\*.\* is anything except ".20.30.40" because 10.20.30.40 is the Ethernet card's default IP address)
  - Subnet mask: 255.0.0.0

4. Connect a single AEW-R5200 receiver directly to the computer's Ethernet card via an RJ-45-terminated *crossover cable*. (See Figure D.) Failure to use the proper crossover cable will prevent the receiver from being recognized by the software.
5. Power the receiver as instructed in *Installing and Using the Software* (page 10), and then run the software on your connected computer.



**Figure D. Connecting a single AEW-R5200 directly to a computer.**



**To connect multiple receivers via link cables (for systems that include AEW-R4100 receivers, or for systems without access to multiple Ethernet connections):**

The AEW-R5200 receiver has the capacity to connect to other AEW-R5200 receivers and/or to AEW-R4100 receivers via the included link cables. No network is required for this configuration. Channel 1 of the first unit in the chain will automatically act as the Master unit and must be connected via Ethernet cable to the computer or network. Consult the receiver/system manual for full details.

Never connect an Ethernet cable to the Ethernet port and a link cable to the AEW-R5200 unit's OUT jack at the same time.

**To link receivers via link cables:**

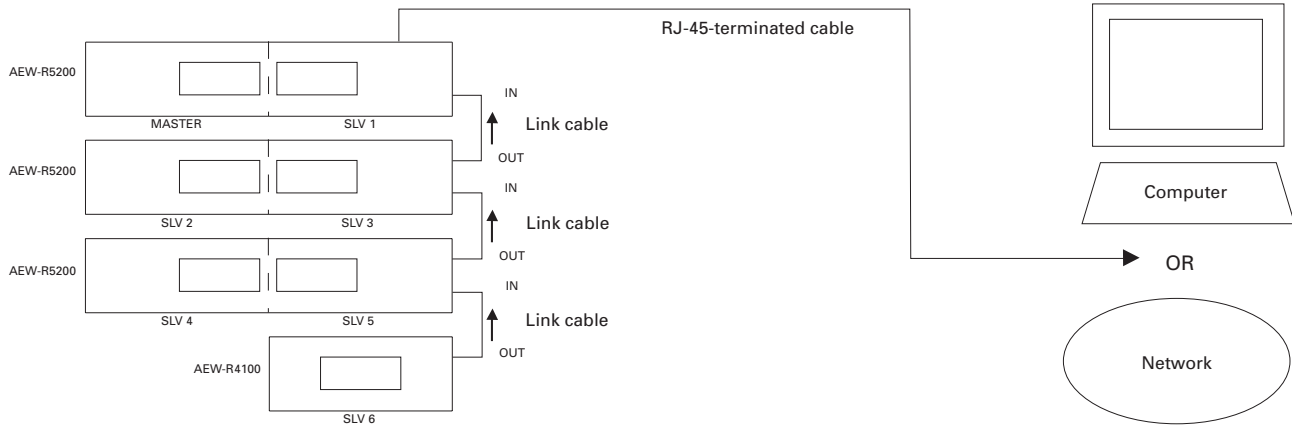
1. Make certain that all receivers are turned off, and make certain that an AEW-R5200 unit is first in the chain (i.e., has no link cable attached to its LINK OUT jack). The software will not run with an AEW-R4100 unit as Master.
2. Link receivers to one another using the provided link cables. When running link cables from one unit to another, connect the cable from the OUT jack of unit 2 to the IN jack on unit 1, the cable from the OUT jack of unit 3 to the IN jack of unit 2, and so on. (See Figure E.)
3. Connect the Master AEW-R5200 unit to the network (page 7) or computer (page 8).
4. Power the receivers as instructed in *Installing and Using the Software* (page 10), and then run the software on your connected computer.

Note 1: Occasions may arise for which you wish to set up a system comprising one Master AEW-R5200 and multiple slave AEW-R5200 units. (For example, you may not have access to enough Ethernet ports to connect all receivers.) To make certain that all subordinate units function as slaves, **you must use link cables** instead of Ethernet cables. Channel 1 of each AEW-R5200 unit that is connected to an Ethernet hub or port will set itself as the Master receiver of any receivers linked to it via link cable.


However, be aware that **AF- and RF-level data are not transmitted via link cable**. If you wish to monitor these features using the AEWCI software, each AEW-R5200 must be connected via Ethernet cable.

AEW-R4100 receivers do not have Ethernet ports; therefore, they must be linked to an AEW-R5200 via link cable, and you will not be able to monitor the AEW-R4100's RF or AF levels using the AEWCI software.

Note 2: The AEW-R5200 may also be connected to a system using a wireless network access point and wireless Ethernet network card for maximum flexibility. Consult the manufacturers' instructions for these components for more information on using them with your computer.



**Figure E. Example of slave receivers linked via link cables to a Master receiver connected via Ethernet to a computer or network.**



**Warning:** Do not connect an Ethernet cable to the Ethernet port and a link cable to the AEW-R5200 unit's OUT jack at the same time. Doing so will cause the system to function incorrectly or not at all. Only the Master receiver may have a link cable connected to its IN jack and an Ethernet cable connected to a computer or network.

## Installing the Hardware *(Continued)*

### To set up remote access to the AEW-R5200 via the Internet:

Procedures for this setup will vary, depending upon your network, any firewalls that may be in place, etc. **Ask the network administrator for assistance.** It is possible to configure your LAN or Internet connection to access the receivers from a remote location using a PC-compatible computer equipped with AEWCI software.

Here are some *general* guidelines for accessing a system via the Internet:

1. The remote engineer gains access to the client's network (via dial-up, network connection, or other Internet access). To do so, he or she needs specific IP addresses, especially if the client's network has a firewall.
2. The engineer then gains access to the AEW-R5200 receivers by running the AEWCI software. The remote receiver can be added by going to **File > Network Configuration** and clicking **Add...** to add the receiver's IP address. For instructions, see page 13.



**Warning:** Accessing a company's network through a firewall opens the network to security risks. This procedure should be set up and executed with extreme caution. Because DHCP routers may change each receiver's IP address upon receiver reboot, connection to the AEW-R5200 receivers may be lost, and the remote user may gain unintended access to other areas of the network.

## Installing and Using the Software

### Installing the software

1. Insert the compact disc into your CD-ROM drive.
2. If Autoplay is enabled, setup will begin automatically. Otherwise, go to **Start > Run** and type the path (e.g., D:\setup.exe) to the Setup file on the CD-ROM.
3. InstallShield™ will install Java™ 2 Runtime Environment and the AEWCI software as well as the system manual and software manual in PDF. Follow the prompts on the screen.
4. The installer automatically installs a desktop shortcut for the software.



**Caution:** Before you start the software, **make certain your receivers are powered** (all at once, or slaves first, then Master). The receivers must be on and connected to the network or directly to the computer for the software to recognize them.

If you accidentally start the software before powering the receivers, you have two options: 1) close the software and restart after receivers are powered; or 2) go to **Tools > Reconnect to Network** to search for new connections.

### Getting started

1. Power all networked receivers on the system (all at once, or slaves first, then Master).
2. Go to **Start > Programs > Audio-Technica > Artist Elite Wireless Control Interface** and click. (Alternatively, double-click on the desktop shortcut.)

After the splash screen (the screen that appears while the software is loading) disappears, you will view the **Main GUI [Graphical User Interface] window**. The first time you load the GUI, the screen will show any receivers connected within your subnet. (A subnet [short for "subnetwork"] is an identifiably separate part of an organization's network. Having an organization's network divided into subnets allows it to be connected to the Internet with a single, shared network address.)

To enable additional receivers outside your subnet, go to **File > Network Configuration** and enter the IP address to add the receiver (see page 13). Once the receiver has been added and communication established, go to **File > Receiver Configuration** and enable the receiver. See page 13 for more details.

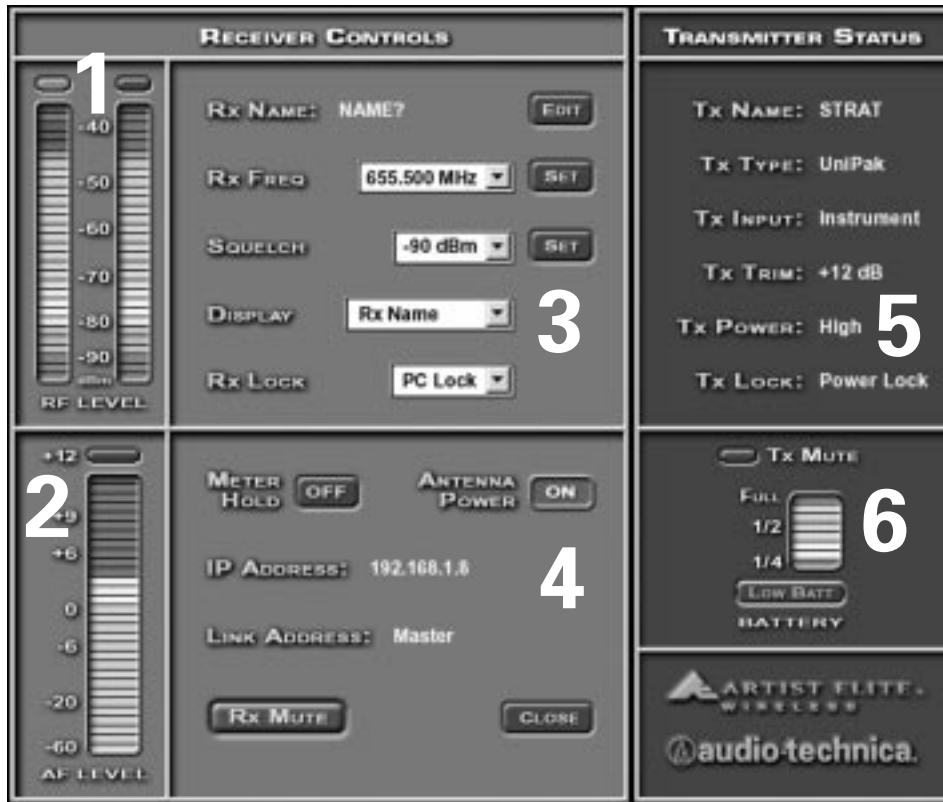


Figure G. Channel Detail window.

SECTION 1: **Monitor** RF levels for each antenna. The red indicators at top show which True Diversity tuner is selected (which antenna is receiving the stronger signal). RF levels are greyed out for AEW-R4100 units and for AEW-R5200 units linked via link cables, because link cables do not transmit RF-level data.

SECTION 2: **Monitor** AF level. The red indicator at top lights when AF level reaches +12 dB (peak audio level). AF level is greyed out for AEW-R4100 units and for AEW-R5200 units linked via link cables, because link cables do not transmit AF-level data.

SECTION 3: **Monitor** and **control** the following receiver features (see Page 12 for instructions on editing settings):

- Receiver name
- Frequency
- Squelch level
- Display in Main GUI window (transmitter name or receiver name)
- Receiver lock status

SECTION 4: **Monitor** and/or **control** the following receiver features:

- Monitor the status of, and enable or disable, Meter Hold and Antenna Power (clicking the greyed **Off** button beside each function toggles it **On**).
- Monitor the receiver's IP address and link address (Master or slave).
- Mute the receiver by clicking on the **Rx Mute** button (shows up red when system is muted) and monitor the status of the transmitter (system's failure to unmute when **Mute** button is clicked may indicate a transmitter problem).
- Close the window using the **Close** button.

SECTION 5: **Monitor** the following transmitter features:

- Transmitter name
- Transmitter type
- Input type (if handheld, whether condenser or dynamic; if UniPak™, whether mic or instrument)
- Trim setting
- Power level (high or low)
- Transmitter lock status

SECTION 6: **Monitor** transmitter battery level and mute status. If the battery level falls below 1/4 power, the **Low Batt** indicator will light in red.

Note: The low battery indicator on the transmitter and receiver LCDs does not display until all indicator bars are gone.

## Navigating the GUI

### Channel Detail Window

To view the *Channel Detail* for a particular receiver, double-click anywhere in the channel strip (the grey column containing information about that channel).

Figure G (see page 11) shows the Channel Detail. For each section of Figure G that contains a numeral, see the corresponding text for an explanation.

### Changing Receiver Name

To name a receiver, access the *Rx Name* popup by clicking on the *Edit* button. Type in the name (up to six characters will display in the GUI). Click *OK* to accept the change and return to the Channel Detail window, or *Cancel* to return to the Channel Detail window without making the change.

### Changing Frequency

To change Receiver Frequency manually (bypassing the IntelliScan™ function), simply click the Up or Down arrow until the desired frequency is displayed. Then click *Set*. Alternatively, you may type a frequency into the box.

### Changing Squelch

To change the Squelch setting, click on the Up or Down arrow until the desired squelch setting is displayed. Then click *Set*.

The GUI offers 16 different squelch settings. Accordingly, the receiver's squelch display has 16 bars, with one bar being the minimum setting. These bars correspond with the squelch settings in the GUI.



**Caution:** Squelch is a feature that mutes the receiver when RF drops below the user-chosen level. It is useful for combating interference. However, *higher ("tighter") squelch settings may decrease the operating range of the system.* Always test the system before using

tighter squelch in a performance, to make certain that your transmitters will operate at the desired range.

### Changing Display Name

You may choose to display either the transmitter name or the receiver name in the channel strip. (Transmitters may be given separate names from receivers.) Click on the dropdown menu and select the desired display setting (*Tx Name* or *Rx Name*). When you return to the Main GUI window, the display will show either the receiver or transmitter name, as you selected.

To display either Tx Name or Rx Name in *all channel strips*, go to *View > Show Transmitter Names* or *View > Show Receiver Names*, respectively.

Note: Transmitter names must be set (entered) on the transmitter itself. See the system manual for details.

## Changing Lock Setting

Click on the dropdown menu to select one of the following receiver lock options: *No Lock*, *Rx Lock*, *PC Lock*, or *All Lock*. For more details about using the lock settings, consult the system manual.

- *No Lock*: All controllable features may be adjusted from the receiver or the computer.
- *Rx Lock*: Controllable features may be adjusted only from the PC, not from the receiver.
- *PC Lock*: Controllable features may be adjusted only from the receiver, not from the PC. The software will still allow you to access menus; you are restricted only from making changes to settings.
- *All Lock*: No changes at PC or receiver may be made while this option is turned on.

Note: If *PC Lock* or *All Lock* is selected, you will not be able to change any further system settings from the computer until you change the lock setting to either *Rx Lock* or *No Lock*.

## Changing Meter Hold Setting

Meter Hold indicates the highest-level AF and the lowest-level RF signals received from the transmitter. This feature is useful when setting up the system, performing a sound check, or diagnosing operating problems. The button displays *On* (green) or *Off* (grey) depending on the current setting. Click the button to enable or disable this feature.

## Changing Antenna Power Setting

The receiver's antenna jacks have the capability to power optional external antennas using +12V DC output on their center pins. (Powered antennas are *not* required for normal operation.) Click the *On/Off* button to enable or disable this feature.

## Muting/Unmuting System

Provided the transmitter for this receiver is on, you may mute/unmute the receiver from this window by clicking the *Rx Mute* button. (If the transmitter is off, the receiver is automatically muted.)

Note: If the *External Mute* on the receiver is engaged, the Rx Mute function will not unmute it. For more information, see the system manual.

### Navigating the File Menu

#### Open Environment

Use the **Open Environment** command to open a saved environment (collection of settings for a particular set of receivers working as a system).

#### To open a saved environment:

1. Click on **File > Open Environment**.
2. In the Open Environment input popup, select the name of the environment to open.
3. Click **OK**.

#### Save Environment

Use the **Save Environment** command to save the current environment.

#### To save an environment:

1. Click on **File > Save Environment**.
2. In the Save Environment input popup, either choose an already-entered environment name from the dropdown menu (this will save the current environment over the previous file), or select **New Environment** to enter a new name, and click **OK**.
3. If you chose to enter a new environment name, type it in the Environment Name popup and click **OK**, or click **Cancel** to return without saving the environment.

Note: **Saving an environment saves only the receiver settings**, not the receiver configuration. In other words, applying a saved setting will adjust settings on enabled receivers that are part of that environment, but **it will not enable disabled receivers** that are also in the environment, and **it will not disable enabled receivers** that are not part of the environment.

#### Receiver Configuration

Use the **Receiver Configuration** command to open the Receiver Display Setup window, where you can change the order of display of receivers in the system, or enable/disable receivers.

When the software first boots up, it looks for receivers within its network. Any receivers it finds appear in the **Network Configuration** window as **Discovered**. Any receiver that is discovered may be enabled in the Receiver Configuration window, unless it is in use by another computer.

Note: A receiver may be enabled on only one computer at a time. Other computers on the network will be able to view the receiver's IP address but will not be able to enable it.

#### To change the order of display of a receiver:

1. Click on **File > Receiver Configuration**.
2. In the Receiver Display Setup window, click on the receiver to select it.
3. Click on **Move Up** or **Move Down** to change its display order.
4. Click **OK** to accept the changes and return to the Main window, or **Cancel** to return to the Main window without applying the changes.

#### To enable or disable a receiver:

1. Click on **File > Receiver Configuration**.
2. In the Receiver Display Setup window, click on the receiver to select it.
3. Click on **Enable/Disable**. (Enable allows you to activate a discovered receiver; Disable allows you to free up a discovered receiver so that other users on the network may access it.) If the unit is enabled, Disable will display on the button, and vice versa.
4. Click **OK** to accept the changes and return to the Main window, or **Cancel** to return to the Main window without applying the changes.
5. The system applies your changes and reconnects to the network.

Note: **Disabling either channel** of an AEW-R5200 unit **disables the entire receiver** (channels 1 and 2), thus freeing an Ethernet port. Any AEW-R4100 units linked to the AEW-R5200 are also disabled.



**Caution:** Any time you make changes to the Receiver Configuration, the software performs a **Reconnect to Network**. All receivers are muted during this process. Therefore, **do not make changes to Receiver Configuration at any time when system muting would be undesirable!**

#### Network Configuration

The **Network Configuration** window shows information such as IP address, MAC address, Firmware version (of the receiver unit), Enabled status (enabled or disabled), and Discovered status (detected or added) for all receivers in the system.

Until receivers have familiar frequency settings or receiver names, you may not be able to distinguish them, unless you know which receivers are using which IP addresses.

#### To add a remote receiver by entering its IP address:

From the Network Configuration window, click **Add...** and enter the IP address in the Input popup. (See page 10 for an application of this feature.)



**Caution:** Any time you make changes to the Network Configuration, the software performs a **Reconnect to Network**. All receivers are muted during this process. Therefore, **do not make changes to Network Configuration at any time when system muting would be undesirable!**

#### Exit

Use the **Exit** command to close all windows and exit the software.

## Navigating the Tools Menu

### IntelliScan™

The *IntelliScan* command starts the automatic channel scanning and selection feature, which searches all open frequencies and sets all receivers in the system to the best available and compatible frequencies (all frequencies will belong to one frequency group). For more information on IntelliScan, see the system manual. For more information on frequency groups, see the system manual.

The IntelliScan process may take several minutes to complete.

#### To start IntelliScan:

1. Turn *off* all Artist Elite transmitters, and turn *on* all non-Artist Elite transmitters, as well as other possible sources of RF.
2. Making certain you do not have *PC Lock* on, go to *Tools > IntelliScan*.
3. In the popup window, enter the starting and ending frequencies (useful if you want to scan only a narrow band of frequencies). If no frequencies are entered, the entire operating band will be scanned.
4. From the dropdown menu, choose the receiver you wish to perform the scan, if other than the default receiver.
5. Click *Start* to begin the process (or *Cancel* to disregard changes and return to the Main GUI window).
6. The *Progress* popup shows what frequency group is currently being scanned, and a progress bar gives you an idea of how long it will take to scan the current group.
7. When the process is complete, the Master(s) and all slave receivers are set to compatible frequencies.

Note: *If IntelliScan cannot locate enough available frequencies*, it will set as many receivers as it can. Any remaining receivers will be set to the lowest frequency in the band.



**Caution:** Any time you run IntelliScan, *all receivers are muted during this process*. Therefore, *do not run IntelliScan at any time when system muting would be undesirable!*

### Spectrum Analyzer

Use the *Spectrum Analyzer* to discover which frequencies are occupied in your area and at what power level (in dBm). If you run Spectrum Analyzer with your transmitters on, the software will pick them up and show spikes on the graph; if your transmitters are off, the test can show frequencies of other transmitters or RF sources in your area.

#### To start Spectrum Analyzer:

1. Click on *Tools > Spectrum Analyzer*.
2. The *Spectrum Analyzer* popup appears. Enter the starting and ending frequencies you wish to analyze, if necessary (useful if you want to analyze only a narrow band of frequencies or if you need to save time). Then, from the dropdown menu, choose the receiver you wish to perform the analysis.
3. Click *Start* to begin testing. This process may take several minutes.
4. When the process is complete, the *Progress* popup disappears and a chart of RF power vs. frequency is displayed.



**Caution:** Any time you run Spectrum Analyzer, *all receivers are muted during this process*. Therefore, *do not run Spectrum Analyzer at any time when system muting would be undesirable!*

### Coverage Test

The *Coverage Test* helps you determine where in the performance area your transmitters are strongest and where they are weakest by providing a graph of RF power vs. time. You may choose from seven test-duration times ranging from 30 seconds to one hour.

#### To start Coverage Test:

1. Make certain the appropriate transmitter is on and has sufficient battery power for the desired test period.
2. Click on *Tools > Coverage Test*.
3. The *Coverage Test Setup* popup appears. Select the test duration from the *Choose Test Duration* dropdown menu.
4. From the *Receiver* dropdown menu, select the receiver that corresponds to the transmitter being tested.
5. Click *Start* to begin the coverage test, or *Cancel* to return to the main GUI window.

### Reconnect to Network

*Reconnect to Network* causes the GUI to rescan the network for AEW receivers. It is useful as a refresh feature if you add a receiver to the system or make other network changes that require a system update.

#### To reconnect to the network:

1. Click *Tools > Reconnect to Network*.
2. After closing the current connections, the software searches for connected receivers on the network and refreshes the GUI display.



**Caution:** Any time you Reconnect to Network, *all receivers are muted during this process*. Therefore, *do not Reconnect to Network at any time when system muting would be undesirable!*

### **Navigating the View Menu**

*The View menu gives you:*

- the opportunity to choose either large- or medium-sized receiver channel displays;
- the ability to change the display in the Main window to show all receiver names or all transmitter names.

### **Channel Display**

*To change the size of the channel display:*

1. Click **View**.
2. Select **Large Size Receivers View** to see up to ten full-height receiver channel strips.
3. Select **Medium Size Receivers View** to see up to twenty half-height channel strips.

### **Name Display**

*To change name display in the Main window:*

1. Go to **View > Show Receiver Names** to show only receiver names at bottom of each channel strip.
2. Go to **View > Show Transmitter Names** to show only transmitter names at the bottom of each channel strip.

Note: Transmitter names must be set (entered) on the transmitter itself. See the system manual for details.

### **Navigating the Help Menu**

#### **Contents**

The **Contents** of the Help Index are listed and accessible from this menu.

*To access the Help Index:*

1. Click **Help > Contents**.
2. From the list, select the topic you want to learn more about.

#### **About**

The **About** screen gives details of copyright and software version.

*To access the About screen:*

1. Click **Help > About**.
2. Click **OK** to exit.

***Visit our Web Site!***  
***www.audio-technica.com***



**Audio-Technica U.S., Inc.**, 1221 Commerce Drive, Stow, Ohio 44224 330/686-2600 [www.audio-technica.com](http://www.audio-technica.com)

P51562 ©2003 Audio-Technica U.S., Inc. Printed in U.S.A.

All trademarks and registered trademarks are the property of their respective owners.