

One-Piece Latching Raceway

BFT-Style Surface Raceway Systems



Surface Raceway System

The Surface Raceway System is a functional, affordable, attractive solution for wire enclosure applications in commercial, industrial and residential environments. The product line includes extruded raceways with pre-applied adhesive backings, fittings, and Adapter Boxes.

- One piece design features patented hinge (Lid can be opened in any mounting position.)
- Parts are made of a strong, durable, lightweight, UL 94-VO compliant PVC
- UL 5A specification for 600 volt applications
- One inch minimum bend radius accessories available for Category 5e, 6 and fiber optic installations
- All products are fully paintable

Available in three sizes:

- 3/4" x 1/2" (Model No. 03SR)
- 1" x 1/2" (Model No. 05SR)
- 1-1/2" x 3/4" (Model No. 09SR)



Description	Dimensions (mm)				Belden Part Number
	A	B	C	Tape Width	
One-Piece Latching Raceway					
03SR White, 3/4" x 1/2" 8 ft, 20 pcs	0.760" (19.3)	0.505" (12.8)	0.050" (1.27)	0.500" (12.7)	BFT-03SRW8
05SR White, 1" x 1/2" 8 ft, 20 pcs	1.010" (25.7)	0.505" (12.8)	0.050" (1.27)	0.750" (19.1)	BFT-05SRW8
09SR White, 1-1/2" x 3/4" 8 ft, 20 pcs	1.500" (38.1)	0.755" (19.2)	0.050" (1.27)	1.000" (25.4)	BFT-09SRW8

These products are in the process of being assessed for RoHS compliance. Please check our Web Site for the most current RoHS status.

Area of Raceway

Model No.	Sq. In.	mm ²
03SR	0.259	167.10
05SR	0.488	314.84
09SR	0.827	533.55

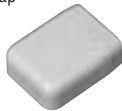
See chart on page 13.4 for Raceway fill capacities.

Accessories & Adapter Boxes

BFT-CE03W Ceiling Entry



BFT-EC03W End Cap



BFT-F003W High Radius Elbow



BFT-9003W Flat Elbow



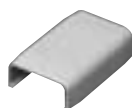
BFT-IN30W Inside Corner



BFT-OC03W Outside Corner



BFT-SC03W Splice Cover



BFT-3T03W 3-Way Tee



BFT-4T03W 4-Way Tee



AX102610 MediaFlex Double Gang Adapter Box



Surface Raceway System Accessories

A wide variety of accessories are available for the Surface Raceway System including:

- Ceiling Entries
- End Caps (End cap doubles as reducer to all three raceway sizes)
- High radius elbows
- Flat Elbows
- Inside Corners
- Splice Covers
- Outside Corners
- 3-Way and 4-Way Tees

Description	Belden Part Number		
	03SR	05SR	09SR

Surface Raceway Accessories			
Ceiling Entry, White, 10 pcs	BFT-CE03W	BFT-CE05W	BFT-CE09W
Splice Cover, White, 10 pcs	BFT-SC03W	BFT-SC05W	BFT-SC09W
End Cap, White, 10 pcs	BFT-EC03W	BFT-EC05W	BFT-EC09W
3-Way Tee, White, 10 pcs	BFT-3T03W	BFT-3T05W	BFT-3T09W
Flat 90 Elbow, White, 10 pcs	BFT-9003W	BFT-9005W	BFT-9009W
Inside Corner, White, 10 pcs	BFT-IN03W	BFT-IN05W	BFT-IN09W
Outside Corner, White, 10 pcs	BFT-OC03W	BFT-OC05W	BFT-OC09W
4-Way Tee, White, 10 pcs	BFT-4T03W	BFT-4T05W	BFT-4T09W
High Radius Elbow, White, 10 pcs	BFT-F003W	BFT-F005W	BFT-F009W

These products are in the process of being assessed for RoHS compliance. Please check our Web Site for the most current RoHS status.

Surface Raceway System Adapter Boxes

MediaFlex Surface Adapter Boxes are one part of the comprehensive line of plates and inserts that snap together to create a full line of modular workstation outlets. MediaFlex Surface Adapter Boxes are designed to work with Belden surface raceway systems. The MediaFlex Surface Adapter Boxes are available in Single and Double Gang configuration.

- Good depth allow more room for cable management and bend radius
- Comes with mounting plate for added installation flexibility
- No special tools required, therefore reduces installation time
- Sturdy design for excellent durability and network protection
- Modern unique aesthetic design

Description	Belden Part Number
-------------	--------------------

Adapter Boxes	
MediaFlex Single Gang Adapter Box, Standard, White	AX102611
MediaFlex Double Gang Adapter Box, Standard, White	AX102610

These products are in the process of being assessed for RoHS compliance. Please check our Web Site for the most current RoHS status.

Technical Information

Raceway Fill Capacity Chart

Wire Type	Wire Diameter		Wire Area		Number of Cables per Raceway		
	Inch	mm	Sq. In.	mm ²	03SR	05SR	09SR
Building Wire THHN							
14 AWG	0.108	2.74	0.0092	5.935	3	5	9
12 AWG	0.126	3.20	0.0125	8.065	2	4	7
10 AWG	0.170	4.32	0.0227	14.645	1	2	4
Signal Wire UL Style 1061 • 300V 80 C°*							
18 AWG	0.066	2.74	0.0034	2.194	30	57	97
20 AWG	0.066	1.68	0.0028	1.806	37	69	117
22 AWG	0.050	1.27	0.0020	1.290	53	99	169
24 AWG	0.045	1.14	0.0016	1.032	65	123	208
Unshielded Twisted Pair Wire (UTP) 24 AWG*							
2-Pair	0.140	3.56	0.0154	9.935	7	13	22
3-Pair	0.150	3.81	0.0177	11.419	6	11	19
4-Pair Cat 5e, Cat 6	0.220	5.59	0.0380	24.516	3	5	9
25-Pair	0.510	12.95	0.2042	131.742	0	1	2
Twisted Pair Wire (Shielding)*							
4-Pair 24 AWG	0.250	6.35	0.0491	31.677	2	4	7
25-Pair 24 AWG	0.510	12.95	0.2042	131.742	0	1	2
Type 1A 22 AWG	0.430	10.92	0.1451	93.613	1	1	2
Coax Cable (Max.)							
RG-58/U	0.193	4.90	0.0292	18.839	4	7	11
RG-59/U, RG-62/U	0.242	6.15	0.0460	29.677	2	4	7
RG-6/U	0.270	6.86	0.0572	36.903	2	3	6
Fiber Optic Cable 62.5/125/900, PVC JACKET, OFNR*							
2 Strand	0.175	4.45	0.0240	15.484	4	8	14
4 Strand	0.185	4.70	0.0269	17.355	4	7	12
6 Strand	0.210	5.33	0.0346	22.323	3	6	10

*Based on 40% fill ratio

Area of Raceway

Model No.	Sq. In.	mm ²
03SR	0.259	167.10
05SR	0.488	314.84
09SR	0.827	533.55