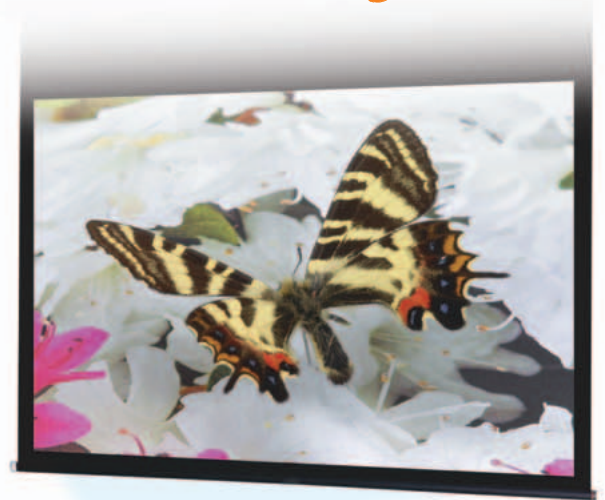


*Seeing is Believing...
Retaining and Learning*



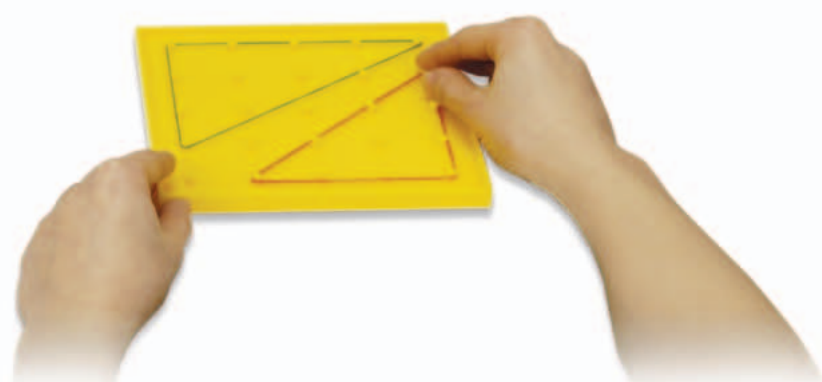


Students are fascinated by digital image technology like the video games they play at home, but how often do they see it used in the classroom? There's a good chance that the static OHP transparencies used for presentations in your classroom aren't exciting your students anymore.

ELMO introduces the TT-02s Teacher's Tool, a presentation solution that enables you to bring the same exciting visual technology into your classroom presentations for the benefit of your students. Research shows that stimulating visual displays are easily grasped, retained and absorbed by students. Whether a scientifically based instructional program or math lesson, the TT-02s will gain the attention you need to achieve positive results.




*It's All About Sharing,
Comprehension and Student Retention*




TT-02s
Teacher's Tool



What's Your District Doing About Achieving NCLB Compliance?



Scientifically proven in numerous educational white papers, improved student participation and retention are the keys to better scores on testing and NCLB reports. The lightweight and easily transportable ELMO TT-02s is offered at a budget-sensitive cost to fit any District's budget and is a great way to help start improving your students' test scores.



Create Dynamic Lessons with Ease



41.6X Zoom with Auto Focus

Optical Zoom **5.2X**

Digital Zoom **8.0X**



The 5.2X optical zoom captures crisp and detailed images. Get even closer in combination with the 8.0X digital zoom to enlarge minute features up to 41.6X. What's more, the Auto Focus function ensures that the details of objects on the TT-02s' 11" x 17" shooting area remain sharp.



Simple Control Panel for Easy Operation



A logically designed control panel with simplified buttons and LEDs makes operation easy and intuitive.



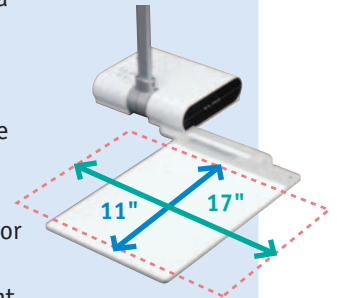
Removable Stage and Unique, Convenient Design

Versatile operation

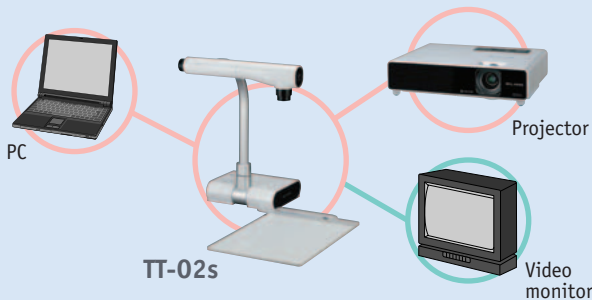


Note: Do not write directly on the stage.

Annotate easily with the stroke of a pen using the included Removable Stage. And the fact it's removable gives you several advantages. You can write on the paper on the stage from a comfortable position. The stage can also be placed out of the way when presenting large objects or visuals up to 11" x 17" ledger size. This optimal flexibility is a highlight of the TT-02s' unique design.



Versatile Input/Output Connections

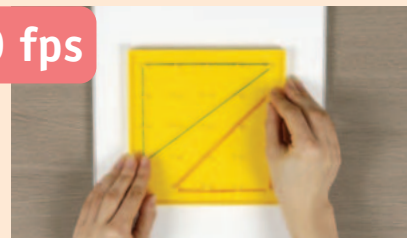


Easily switch to a PC image display or project images to any standard monitor or projector for greater presentation flexibility.



Capture Vivid Live Images

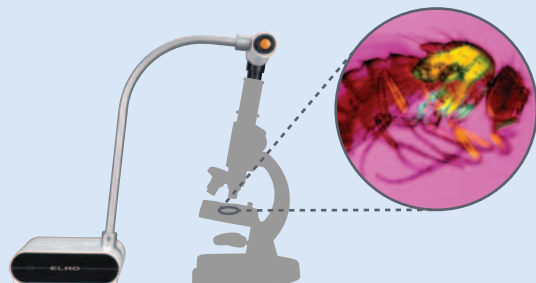
20 fps



With a frame rate of 20 fps, the TT-02s smoothly captures and displays moving objects in real-time, making hands-on lessons even easier to understand.



Microscope Viewing Mode



Capture microscope slides to easily display minuscule subject matter for science lessons.



Auto Brightness Control and LED Lamp



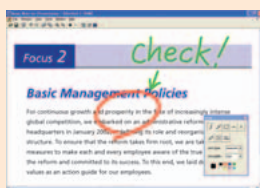
The TT-02s' camera automatically adjusts to changing levels of room brightness. Used together, the camera and the auxiliary LED lamp ensure easy-to-view presentations, even in darkened rooms.



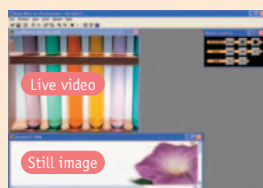
USB 2.0 PC Interface and Image Mate Software

The TT-02s is equipped with a USB port for easy image transfer to a PC.

With the convenience of the bundled Image Mate software, you can easily monitor, capture, edit and save any image on your PC.



Annotation



Split Screen function

- Monitor the image on a PC screen via USB 2.0 connection.
- Use your mouse for zoom, focus and iris control, then capture the image.
- Annotation tools let you draw lines (freehand or straight) or boxes in a variety of colors on the captured image.
- Split Screen gives you a platform for comparing live video to stored images — side by side for greater visual impact.



SD Memory Card-Ready



Images captured with the TT-02s and PC image files can be stored on an SD Memory Card (sold separately) for use in slide show presentations output through the TT-02s. And the images on the TT-02s' SD Memory Card can be easily transferred back to a PC via a USB cable.



SD Memory Card

Note: Only image files saved to the TT-02s' SD Memory Card or converted using the supplied conversion software are viewable through the TT-02s.



TT-02s Specifications

Model		TT-02s	
Camera	Image pick-up device	1/3" progressive scan CCD, 850,000 pixels	
	Effective pixels	1024 (H) x 768 (V)	
	Frame rate	20 frames/sec.	
	Resolution	600 (H) x 600 (V) TV lines	
	RGB output	400 (H) TV lines	
	Video output	400 (H) TV lines	
Optics	Zoom	Powered, 5.2X optical	
	Lens	F2.8 to 3.2, f=3.85 to 20.02 mm	
	Shooting area	Max. 16 7/8" x 12 1/2" (426 x 317 mm) Min. 3 3/4" x 2 3/4" (94 x 71 mm) for 17-inch document	
	Focus	Auto/Manual (powered)	
	Brightness control	Auto (level control provided)/Manual (powered)	
Functions	White balance	Auto/Push set/Manual	
	Negative/positive conversion	Provided	
	Text mode	Provided	
	Edge enhancement	Provided (Graphic mode only)	
	Color/B&W selection	Provided	
	Pause mode	Provided	
	Digital zoom	Provided (8X)	
	Gamma adjustment	Provided (Graphic mode only)	
	OSD (on-screen display)	Provided	
	Slide show	Provided (SD card image)	
	Image save	Provided (onto SD card)	
	Image rotation	Provided (0°, 180°)	
	State presetting	Up to 4 user settings	
	Sync. system	Internal	
	Free-stop arm	Provided	
	Microscope viewing mode	Provided	
	Interfaces	Internal selection	Int./RGB
Analog RGB output		XGA (1024 x 768 @60 Hz)	
Video output		Composite	
RGB input		Provided	
USB port		Provided	
SD card slot		Provided	
Lighting	Illumination lamp	Provided	
Others	Accessories	AC adapter, RGB cable, instruction manual, removable stage, magnet sheet, anti-glare sheet (A5 size), dust cover, USB cable, Image Mate, TWAIN DS driver	
	Dimensions (W x D x H)	Set up	13 7/8" x 14 5/8" x 16 1/4" (350 x 370.5 x 411.5 mm)
		Folded	7 3/4" x 10" x 17 1/2" (195 x 254.5 x 444.5 mm)
	Weight	6.4 lbs (2.9 kg)	
	Power consumption	9W	
Power source	DC 12V (AC adapter)		

H: horizontal, V: vertical

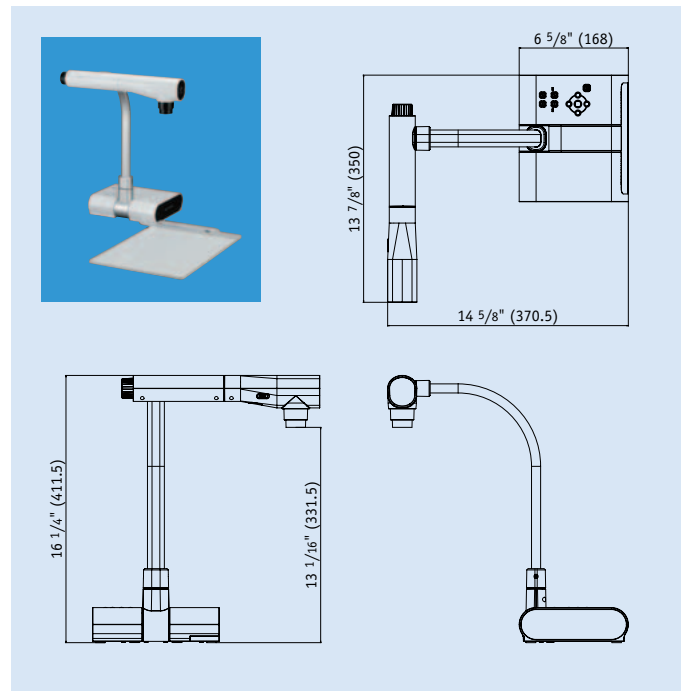
Design and specifications are subject to change without prior notice.
The images in this brochure are simulated.

ELMO is a trademark of ELMO COMPANY, LIMITED.

Other brand names and product names may be trademarks or registered trademarks of their respective owners.

Profile

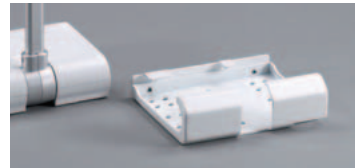
All dimensions in inches (mm)



Rear Panel



Option



Anti theft bracket

ELMO's Helping to Provide a Greener Future for Our Children

This ELMO product complies with RoHS Directive 2002/95/EC (Restriction Of the use of certain Hazardous Substances in electronic equipment). This compliance helps to ensure a healthier and greener environment for all our children.

ISO 9001
JP 95/05165QA
ISO 14001
TW 01/19851EM

ELMO CO.,LTD. (Head Office and Factory's QMS/EMS has been registered to ISO 9001 & 14001 : 2004.

ELMO
FOCUS ON THE FUTURE

ELMO CO., LTD.

6-14, Meizen-cho, Mizuho-ku
Nagoya, 467-8567, Japan

Distributed by

Additional technical information is available from any of the following subsidiary companies:

ELMO USA Corp.

Headquarters

1478 Old Country Road
Plainview, NY 11803-5034, U.S.A.
Tel. (516) 501-1400 Fax. (516) 501-0429
E-mail : elmo@elmousa.com
Web : <http://www.elmousa.com>

West Coast Branch

Cypress Pointe Business Park
5676 Corporate Avenue
Cypress, CA 90630, U.S.A.
Tel. (714) 828-8457 Fax. (714) 828-8429

ELMO (Europe) G.m.b.H.

Neanderstr. 18
40233 Düsseldorf, Germany
Tel. (0211) 386470 Fax. (0211) 376630
E-mail : info@elmoeurope.com
Web : <http://www.elmoeurope.com>



This brochure is printed on recycled paper with soy ink.

Printed in Japan (O) 06/2007