



RDL[®]
Radio Design Labs

SPECIALISTS IN PRACTICAL PRECISION ENGINEERING™

ACCESSORIES

Model FP-PSB1

Power Supply Mounting Bracket

APPLICATION: The FP-PSB1 mounts an RDL PS-24U2 power supply and it includes a provision to mount other modules. Any RDL FP-PA20 type audio power amplifier can mount directly to the FP-PSB1. RDL offers mounting brackets for mounting other modules in place of the FP-PA20.



The FP-PSB1 mounts to any flat surface or in an RDL Flat-Pak series rack mount panel (FP-RRA or FP-RRAH). The design of the FP-PSB1 allows it to slide into the Flat-Pak rack mount track. Mounting the FP-PA20 power amplifier (or other RDL modules using available adapter) together with the power supply conserves rack space and produces a convenient and professional installation.



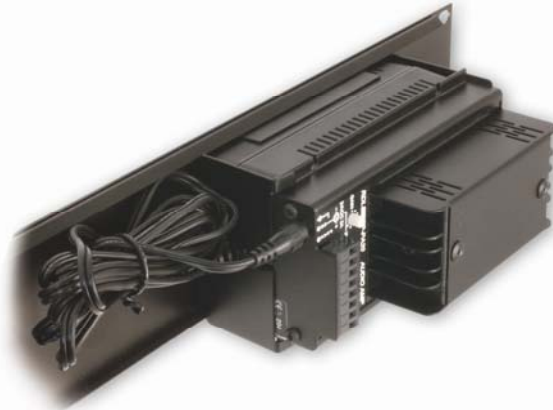
FP-PSB1 Power Supply Bracket with PS-24U2 mounted



FP-PSB1 with PS-24U2 power supply and FP-PA20 audio amplifier mounted



FP-PSB1 Power Supply Bracket with PS-24U2 mounted



FP-PSB1 mounted in FP-RRA (with PS-24U2 supply and FP-PA20 amplifier)



ACCESSORIES

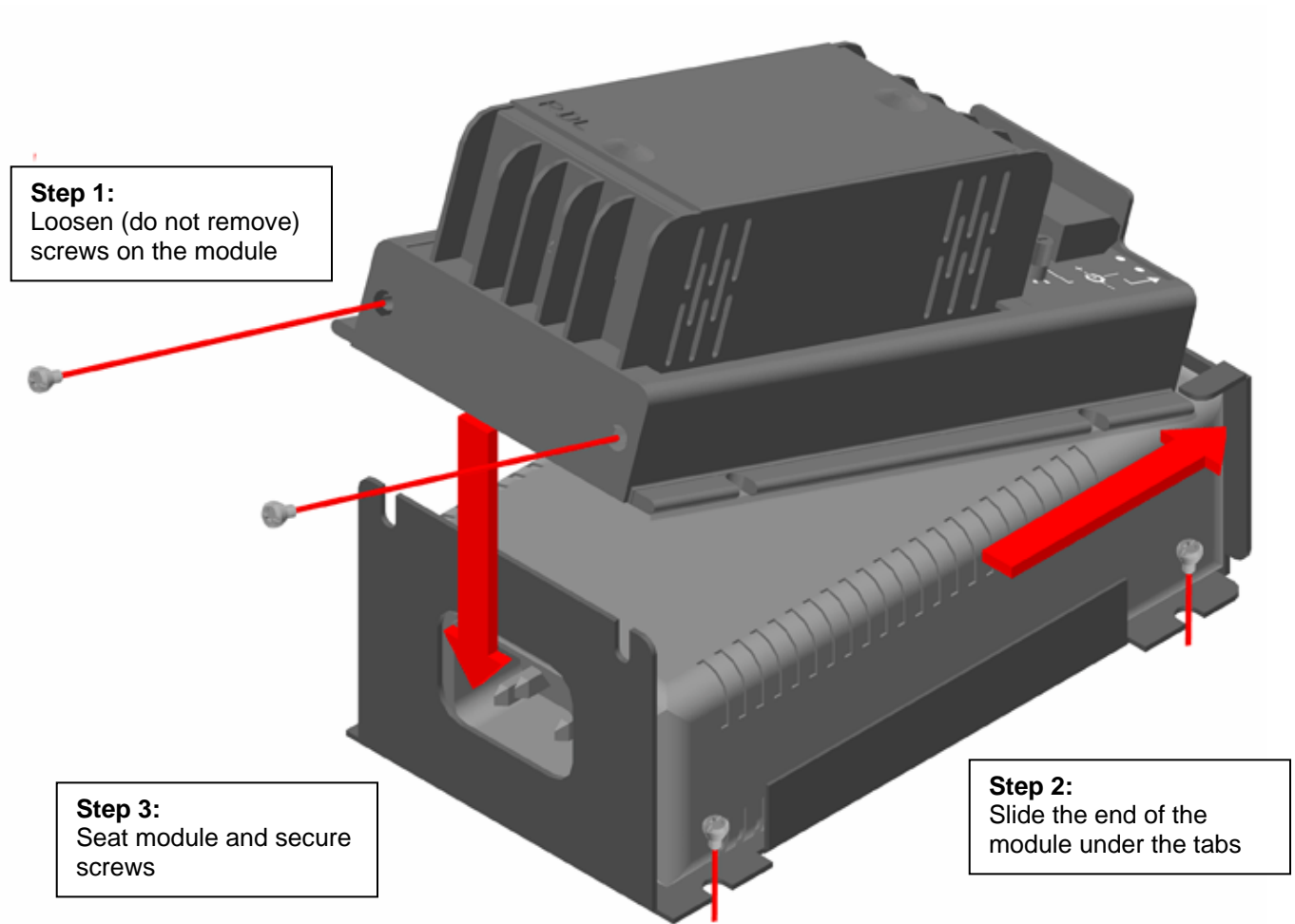
Model FP-PSB1

Power Supply Mounting Bracket

Installation/Operation

EN55103-1 E1-E5; EN55103-2 E1-E4

Typical Performance reflects product at publication time exclusive of EMC data, if any, supplied with product. Specifications are subject to change without notice.



Mount the FP-PSB1 to any flat surface or slide it into the rails on an FP-RRA or FP-RRAH rack adapter. The FP-PSB1 may be used solely to mount an RDL PS-24U2 power supply without mounting a module to the FP-PSB1. STICK-ON modules may be used with the FP-PSB1 by substituting an RDL FP-PBR4 (mounting frame for 4 STICK-ONS) for the FP-PA20 power amplifier module shown in the example above.

TYPICAL PERFORMANCE

Dimensions:

Height:	2.3 in.	5.84 cm
Width:	3.3 in.	8.38 cm
Length:	5.95 in.	15.1 cm

Radio Design Labs Technical Support Centers

U.S.A. (800) 933-1780, (928) 778-3554; Fax: (928) 778-3506

Europe [NH Amsterdam] (+31) 20-6238 983; Fax: (+31) 20-6225-287