



RDL[®]
Radio Design Labs

SPECIALISTS IN PRACTICAL PRECISION ENGINEERING™

max **RACK-UP**[®] SERIES

Model RU-SQ6A Sequencing Controller

ANYWHERE YOU NEED...

- Control of Sequential Power-Up or Events
- Adjustable Up/Down Time Interval
- Relay and Open-Collector Outputs
- Front-panel or Remote Activation
- Up to SIX Sequential Events
- **SURE-LOK**[™] Output Supervision

You Need The RU-SQ6A!



The RU-SQ6A is part of the group of versatile RACK-UP products from Radio Design Labs. RACK-UPs feature the advanced circuitry for which RDL products are known, combined with accessible, user-friendly controls and displays. The ultra-compact design permits high-density installations, with *three* products mounted in a single rack unit! Single RACK-UPs can be mounted right where they are needed using the adhesive methods popularized by RDL's STICK-ON[®] series of products. Optional brackets permit mounting a RACK-UP module above, below, or in front of any flat surface. Optional rack-mount adapters and chassis are available for conventional RACK-UP series installation.

APPLICATION: The RU-SQ6A is the ideal choice in installations where sequential **ON** and sequential **OFF** functions are desired. Control and output connections are made on the rear panel through clearly identified detachable terminal blocks.

Two types of outputs are provided for each of the 6 sequential steps. One type is an open collector capable of switching loads of 50mA. The other type is an SPST dry contact closure which may be used to control a variety of equipment. A single-turn front-panel **TIMING INTERVAL** control adjusts the time delay between channels from 1 to 10 seconds. Front-panel LEDs show when each output channel turns on and off. An internal microcontroller insures reliable, accurate timing.

The up or down sequence is user-controlled by a front-panel pushbutton switch unless the module is set for remote operation. A rear-panel switch set by the installer selects either front-panel or remote control activation. LEDs indicate whether the front-panel **SEQUENCE CONTROL** switch or the remote terminals are active. Grounding the rear-panel **ACTIVATE** terminals or turning on the front-panel **SEQUENCE CONTROL** switch causes an **UP REQUEST** that starts the RU-SQ6A outputs to turn on sequentially. The outputs remain active until the **UP REQUEST** is cancelled by turning off the front-panel or remote control switch, causing the outputs to turn off in reverse sequence. If the **ACTIVATE** terminal is permanently grounded with the module set for remote control, the RU-SQ6A outputs will turn on sequentially when power is applied to the module; all outputs will turn off simultaneously when power is removed from the RU-SQ6A. The **UP REQUEST** LED is illuminated when an **UP** sequence is requested. When the sequence is complete, the **COMPLETE** LED indicates the **SURE-LOK**[™] supervisory circuit is actively latching the outputs active until the user deactivates the sequence.

Wherever sequential up and down switching is needed the RU-SQ6A is the ideal choice. Use the RU-SQ6A individually, or combine it with other RDL RACK-UP or STICK-ON products as part of a complete audio/video system.



RDL® Radio Design Labs®

SPECIALISTS IN PRACTICAL PRECISION ENGINEERING™



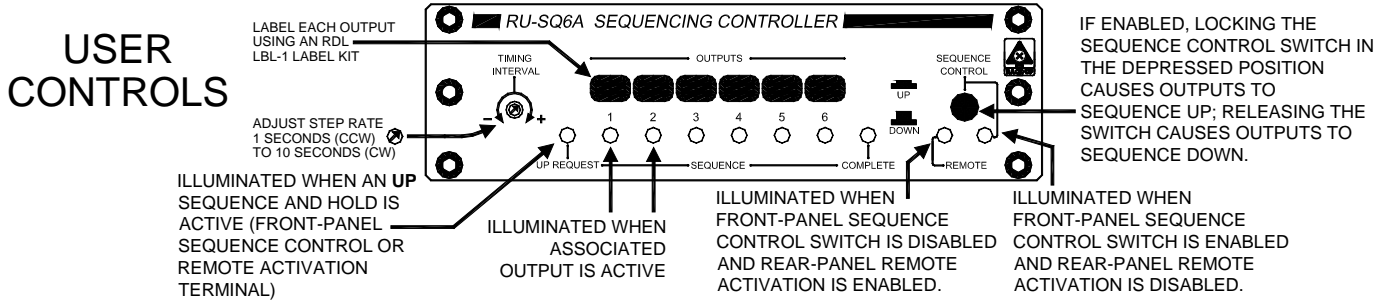
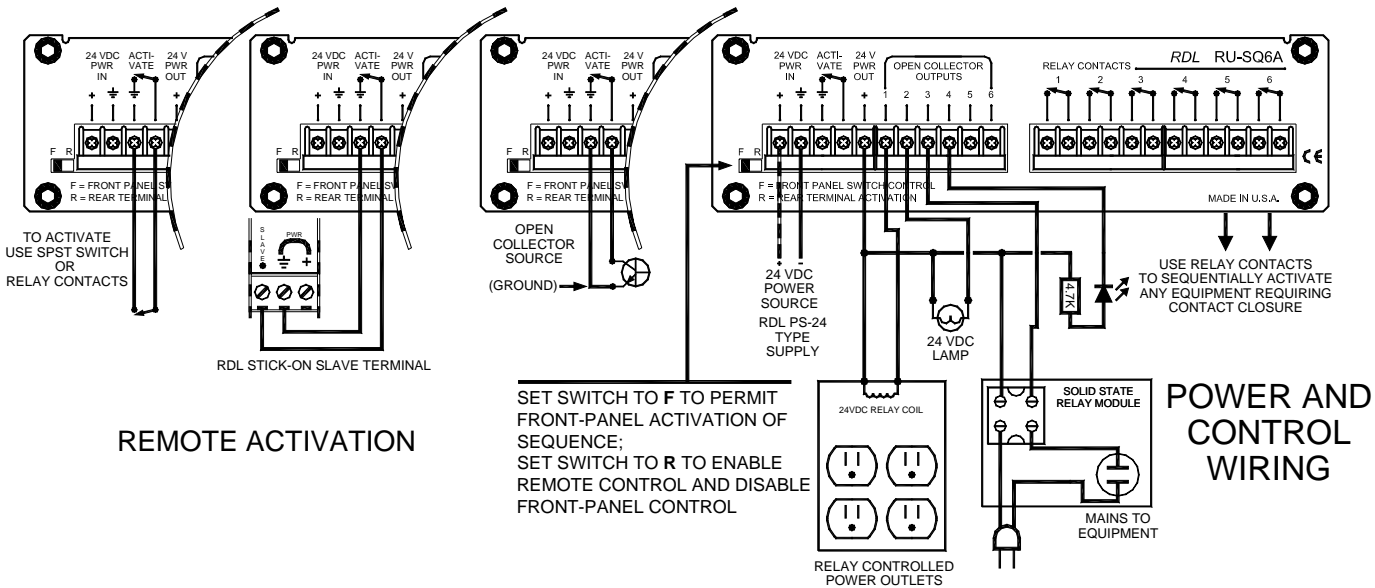
max RACK-UP® SERIES

**Model RU-SQ6A
Sequencing Controller**

Installation/Operation



EN55103-1 E1-E5; EN55103-2 E1-E4
Typical Performance reflects product at publication time exclusive of EMC data, if any, supplied with product. Specifications are subject to change without notice.



TYPICAL PERFORMANCE

Control Input:
Interval Between Outputs:
Indicators (10):

External closure < 2.5 mA @ 24 Vdc
1 to 10 seconds nominal, front-panel adjustable
Red LEDs indicating channel 'on' condition (6)
Green LED indicating UP REQUEST
Green LED indicating sequence COMPLETE
Red / Green LEDs indicating Remote or Front-Panel Activation
1.1 A maximum, 75 mA less than power supply current
200 mA surge; 50 mA continuous; 200 mA maximum
SPST (closed when active)

24 Vdc Output:
Open Collector (6):
Relay Outputs (6):
Maximum Switching Power:
Maximum Switching Voltage:
Maximum Switching Current:
Maximum Carrying Current:

60 W, 125 VA
220 Vdc, 250 Vac
2 A
3 A

Power Requirement:
Dimensions:

24 to 33 Vdc @ 100 mA + plus total load current connected to 24 Vdc output, Ground-referenced
Height: 1.7 in. 4.3 cm
Length: 5.8 in. 15.0 cm
Depth: 3.45 in. 8.8 cm

Radio Design Labs Technical Support Centers

U.S.A. (800) 933-1780, (928) 778-3554; Fax: (928) 778-3506

Europe [NH Amsterdam] (+31) 20-6238 983; Fax: (+31) 20-6225-287