

Company Overview

For more than 25 years Remeë Products has been manufacturing Electronic and Fiber Optic Communication Cables for the Voice, Video and Data markets. Located in the Mid-Hudson Valley of New York, Remeë maintains its status as one of the region's largest, privately owned employers and is consistently striving to maintain the highest quality standards such as its ISO9001 and RUS accreditations.



Our Mission Statement

Remeë's Goal is to be the Industry Leader in the Quality, Manufacture and Delivery of Electronic/Fiber Optic cables.

Manufacturing Capabilities

The physical plant exceeds 150,000 sq. ft. of manufacturing and process control. Both Fiber and Copper quality control labs have state-of-the-art test equipment, capabilities and procedures.

Customer Service

Our knowledgeable sales staff are qualified to handle all inquiries via:

- In-house Data Processing Network
- Regionalized Field Warehouses
- E-mail

In an effort to react quickly to our customers needs, Remeë Products has made *Product Specifications* available through our website at: www.remeë.com

Major Product Lines

- Copper
- Multi Conductors
- Coax & Twiaxial
- Category Cables
- Composite (coax and pairs)
- Fiber Optics
- Loose Tube (RUS)
- Tight Buffer
- Aerial (REDSS and Figure 8)
- Hybrids (MM & SM)

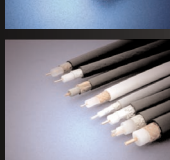
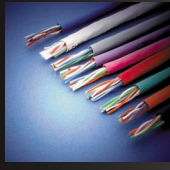
Markets Served

- Broadcast (Radio, TV)
- CATV
- Computer
- Data Communications (LAN, WAN)
- Military (Government)
- Security (Burglar, Fire Alarm CTRV)
- Telephony

Premise Wire • Coaxial Cable • Multimedia Cable • Fiber Optic Cable • Electronic Cable • Hybrid Cables • Composite Cables

Application	Approval	Warranty
Communication & Control	UL	Estimated Warranty
Non-Premium / Riser	CSA	Standard Warranty
Plenum / Listed	CSA	Rose Warranty
Sound & Security		
Fire Alarm		
Fiber Premise		
Fiber Outside		
CCTV		
Home Automation		
Local Area Network		
Copper Outside		
Armored		
Non-Armored		
Messenger		
Data Communication		
Video Conferencing		
Home Theatre		
UL		
ETL		
CSA		

Premise Wire	UL	ETL	CSA	UL	ETL	CSA	UL	ETL	CSA	UL	ETL	CSA	UL	ETL	CSA	
Category 3																
Category 5 UTP																
Category 5 STP																
Category 5E UTP																
Category 5E STP																
Category 5E-350 UTP																
Category 5E-350 STP																
Category 6																
Coaxial Cable																
RG59/U Copper Braid																
RG59/U Aluminum Braid																
RG6/U 40% Aluminum Braid																
RG6/U 60% Aluminum Braid																
RG6/U Quad Aluminum Braid																
RG6/U with Messenger																
RG11/U with Messenger																
Multimedia Cable																
2-RG6Q2- CatSe, Skipbound																
2-RG6Q2- CatSe, Jacketed																
2-RG6Q2- CatSe, & 2-Fibers, Skipbound																
2-RG6Q2- CatSe, & 2-Fibers, Jacketed																
Fiber Optic Cable																
Indoor Distribution																
Indoor/Outdoor																
Aerial/Duct Direct Burial																
All Dielectric ADSS																
Electronic Cable																
Multi-Cond. Unshld. Str.																
Multi-Cond. Shld. Str.																
Multi-Paired Ind. Shld. Str. Common Drn																
Multi-Paired Ind. Shld. Str.																
Multi-Cond. Unshld. Sol.																
Hybrid Cables																
Composite Cables																



Cable Types	Applications
2-Category 5e and 2-RG6 Quad coaxes with an O/A Jacket	Home Automation Cable For complete control over the wired infrastructure. As per TIA-570
2-Category 5e, 2-RG6 Quad Coaxes & 2-FDDI Fibers with an O/A Jacket	Home Automation Cable Same as above except with 2 FDDI fibers for future technologies.
1-Category 5e and 1-RG6 Quad coax with an O/A Siamese Jacket	Home Automation Cable For control of Video & Data over the wired infrastructure. As per TIA-570
2-Category 5e and 2-RG6 Quad coaxes with an O/A Speed-Wrap	Home Automation Cable Same as above except with 2 FDDI fibers for future technologies As per TIA-570
Security Cables & Home Theater Cables Shielded & Unshielded Plenum & Non-Plenum	In-wall home audio speakers, perimeter security, intercoms and other types of electronics communications.
CATV Single Coax RG6/U 60% Braid Plenum & Non-Plenum	Used in CATV, Direct TV, Dish Network and all other types of television broadcast.
CATV Dual Coax RG 6/U 60% Braid	Same as above except used in dual reception or multiple services.
CCTV Coax RG59 & 18/2 Plenum & Non-Plenum	Used in Closed Circuit Camera Systems and all other types of video monitoring.
Fire Alarm 12-18 AWG Plenum & Non-Plenum	For wiring of the building's Fire & Notifying Alarm system. Shielded & Unshielded
Category 3, 5e & Category 5E-350 Mhz Plenum & Non-Plenum	For infrastructure wiring of voice and data networks as per TIA 568B installations.
Category 6 Plenum & Non-Plenum	For infrastructure wiring of Gigabit Ethernet networks as per TIA 568B installations.

Series	Cable Types	Applications
10 30	Simplex/Duplex Tight Buffer, PVC OFNR (Non Plenum) OFNP (Plenum)	General Purpose Interconnect
11 16 33	Tight Buffer OFNR (Non Plenum) OFNP (Plenum)	Premise Distribution Intrabuilding
12 32	Tight Buffer OFNR (Non Plenum) OFNP (Plenum)	Breakout Design
22	All Dielectric/Water Blocked	Outside Plant Duct/Aerial
23	Armored, Jacketed, Water Blocked	Outside Plant Direct Burial
26		
28		
25	Double Jacket, Water Blocked	Outside Plant Heavy Duty
27	Riser Rated OFNR (Non Plenum)	Indoor/Outdoor
80	All Dielectric Self-Supporting Construction	HVM,VLV Power Lines
88	Figure 8 Steel or Dielectric Messenger with or without armor	MVLV Power Distribution Lines

40 Series fiber and copper composite constructions available in Loose Tube or Tight Buffer designs