

Stellar Cranes



(Shown with T3T tandem body)

The 14528 telescopic crane was developed as a result of Stellar customer demand for greater reach and increased capacity. This crane will serve the increasing demands of heavy equipment dealers, the mining industry and large construction companies who operate large fleets with even larger equipment needing service. Stellar developed the 14528 with industry first features, such as the full hydraulic reach to 28 feet! No other North American crane manufacturer has this kind of capacity with this kind of hydraulic reach. The 14528 is a 70,000 foot/pound rated crane that can lift a maximum of 14,000 pounds at 5-feet and 2,500 pounds at 28-feet. Other unique features of the 14528, and Stellar's other telescopic cranes, include hexagonal boom structure, standard variable-speed radio remote control, a planetary winch system with 60 feet per minute and a lighter shipping weight than most competitors.

Master Your Control

The Stellar 14528 is the only crane in its class to offer a state-of-the-art, variable speed radio multi functional remote as a standard feature. With the radio remote control, operators can be in the best location to see the work and the load being lifted and it also allows them to stay out of harms way. The radio remote incorporates a variable speed "trigger" that allows the operators to feather the crane for precise control capabilities. Additionally, the radio remote control handle includes multi functional capabilities, allowing you to operate up to three functions at once, engine start/stop functions, compressor on/off, engine speed controls, and an emergency shut-off.



The Speed You Need

Maximizing winch speed is a common issue with today's crane operators. Stellar has addressed this issue and incorporated a planetary winch system with speeds to 60 ft./min., giving the 14528 crane over twice the speed of the competition. The planetary winch also provides mechanical and hydraulic brakes for added security.

Stellar 14528	Winch Speed Comparison • single part line •	
60 Feet / Min.	Competitor "Y"	Competitor "Z"
	30 Feet / Min.	30 Feet / Min.

Designed & Manufactured in the USA **STELLAR** INDUSTRIES INC.

14528 Telescopic Crane

Stellar Cranes

Designed With You In Mind

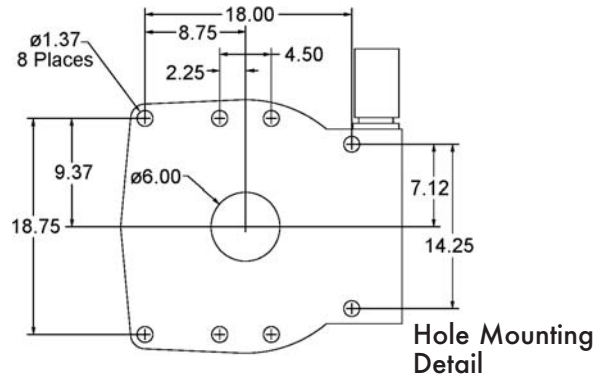
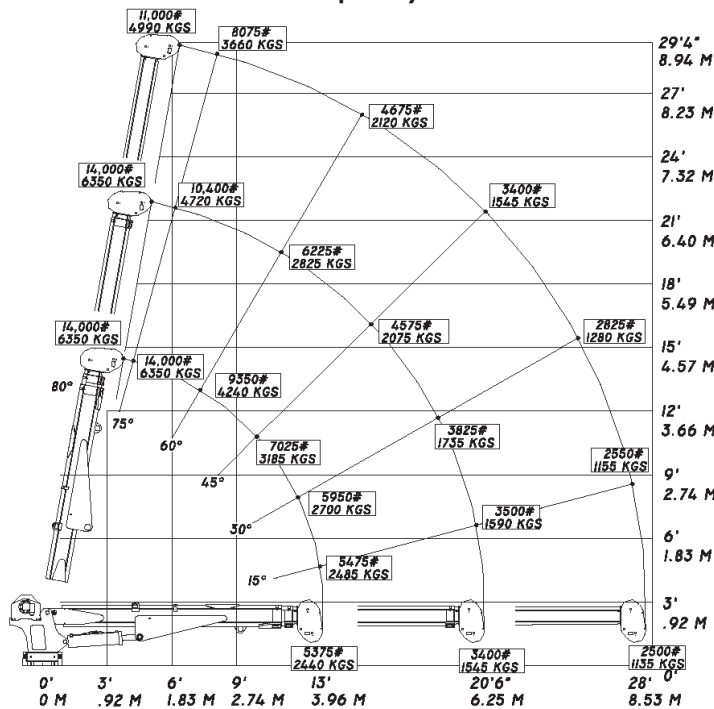
Stellar has "reached" the top of its class with the 14528. Stellar's teams of designers have set parameters that were developed from customer input. Even *more* hydraulic extension than is currently available on standard Stellar cranes has been requested. Unequaled extension to 28 feet, coupled with a multifunction valve bank, which allows more than one function to be operated at one time, and a lighter shipping weight than most competitors makes this a crane incomparable in the market place.

The Stellar 14528 features the Crane Operating Protection System (C.O.P.S.). This state-of-the-art technology measures load, coupled with the degree of boom elevation, and automatically limits functions of the crane to the values on the capacity placard so that overload conditions are not possible. Repositioning the load by lowering, retracting the extension, or booming up will allow for continued use of the crane.



(Shown with T3S single axle body)

14528 Capacity Chart



Model 14528 Crane SPECIFICATION SHEET

Crane Rating: 70,000 ft-lbs
Standard Boom Length: 13' from CL of Crane

Boom Extension:
1st stage: Hydraulic 90"
2nd stage: Hydraulic 90"

Maximum Horizontal Reach: 28' from CL of Crane
Maximum Vertical Lift: 29' 4"
(from crane base)

Boom Elevation: -5 to +80 degree

Stowed Height: 43"
(crane only)

Mounting Space Required: 25 x 22 inches
Shipping Weight: 3,100 lbs

Controls: Radio control standard for all functions

Winch Specification:

Rope Diameter: 1/2"
Line pull speed: 60 ft/min
Max. single part line: 7000 lbs
Max. double part line: 14,000 lbs
Rotation: 400 degree power (worm gear)

Lifting Capacities:
5,375 lbs @ 13'
3,400 lbs @ 20' 6"
2,500 lbs @ 28'

Power Supply Required: PTO & Pump
(12 gpm @ 2,600 psi)



190 State Street
P.O. Box 169
Garner, IA 50438
Telephone: 800-321-3741
Fax: 641-923-2812
Internet: www.mechanictruck.com
email: sales@mechanictruck.com

Quality You Ask For By Name.
Designed & Manufactured in the U.S.A.

*Specifications may change without notification.
Copyright © 2004 Stellar Industries, Inc.