

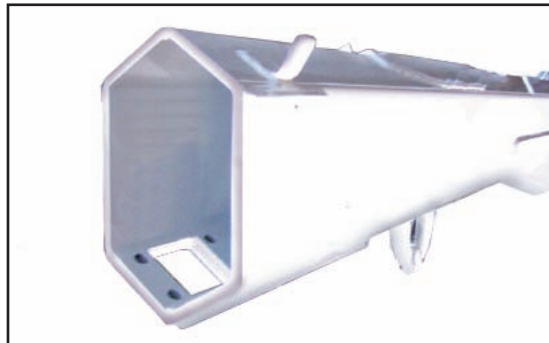
Stellar Cranes



The 3315 electric/hydraulic crane was designed to meet the needs of public utilities, municipalities, water works, construction companies and any other situations requiring an electric/hydraulic crane in medium lifting range. This crane features a 11,500-foot/pound capacity (1.59 ton-meters) and can lift a maximum of 3,200-pounds at three feet (1,451.5 kg at 91 cm). Stellar Industries is the only U.S. manufacturer in this class of crane to offer several unique features. These include a planetary winch with a hydraulic/mechanical brake system, 30 feet per minute (9.1 m/min) winch speed and hexagonal tubing boom construction.

Hexagonal Boom Construction

The exceptional hexagonal boom construction on all Stellar cranes provides a stronger cross section than square tubing. This design reduces boom flex and side to side movement.



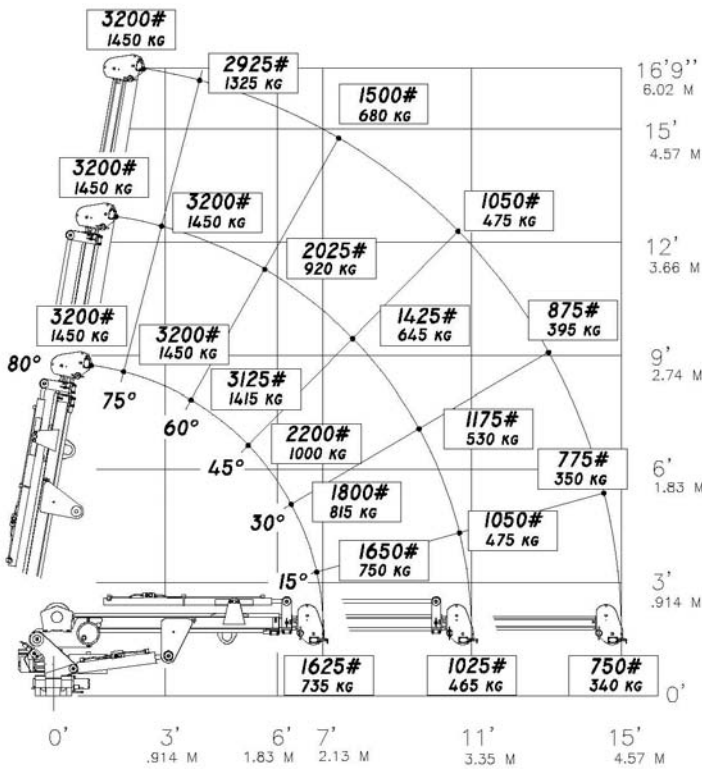
The Speed You Need

Maximizing winch speed has been the most common request from the field. Stellar has incorporated a planetary winch system with speeds to 30 ft./min. ((9.1 m/min), giving you increased speed over the competition. Since it's a planetary winch, you get the security of mechanical and hydraulic brakes.

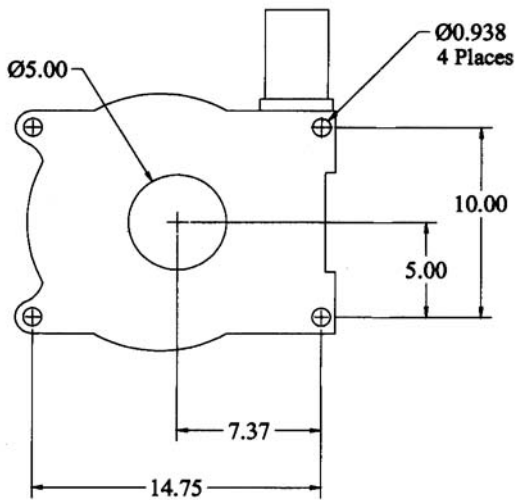


Stellar Cranes

3315 Capacity Chart



Hole Mounting Detail



**Model 3315 Crane
SPECIFICATION SHEET**

Crane Rating: 11,500 ft-lbs (1.59 ton-meters)
 Standard Boom Length: 7' (2.13 m) from CL of Crane
 Boom Extension:
 1st stage: Hydraulic 48" (121.9 cm)
 2nd stage: Manual 48" (121.9 cm)
 Max. Horizontal Reach: 15' (4.57 m) from CL of Crane
 Maximum Vertical Lift: 16'9" (5.11m)
 (from crane base)

Boom Elevation: -5 to +80 degree

Stowed Height: 32.5" (82.6 cm)
 (crane only)

Mounting Space Required: 18" x 15" (45.7 x 38.1 cm)

Shipping Weight: 800 lbs (360 kg)

Controls: 20' (6.10 m) cord with hand held control for all functions

Winch:
 Rope Diameter: 1/4" (.64 cm)
 Line pull speed: 30 ft/min (9.1 m/min)
 Max. single part line: 1600 lbs (725 Kg)
 Max. double part line: 3200 lbs (1450 Kg)

Rotation: 370 degree power
 (worm gear)

Lifting Capacities:
 1625 lbs @ 7' (737 Kg @ 2.1 m)
 1025 lbs @ 11' (465 Kg @ 3.35 m)
 750 lbs @ 15' (340 Kg @ 4.6 m)

Power Supply Required: 12 volt power unit
 (2.0 gpm @ 2300 psi)
 (7.57 lpm @ 159 bars)

NOTE: All Stellar cranes meet ANSI B30.5 and OSHA 1910.180 specifications.



190 State Street
 P.O. Box 169
 Garner, IA 50438
 Telephone: 800-321-3741
 Fax: 641-923-2812
 Internet: www.mechanictruck.com
 Email: sales@mechanictruck.com

Quality You Ask For By Name.
 Designed & Manufactured in the U.S.A.

*Specifications may change without notification.
 Copyright © 2005 Stellar Industries, Inc.