

## New Product Release



# Ethernet Switch Module

## Home Network Systems

- Creates Ethernet data network in the home
- Puts PC and peripheral connections in a central location
- Mounts in FastHome™ or similar enclosure
- Snaps into place without tools
- Indicates power and high-speed access on LED panel
- Enables auto-negotiation on all ports
- Features gold-plated beryllium copper contacts
- Supports network standards IEEE 802.3/802.3u (10/100Mbps)
- Includes a 12VDC 500mA power supply
- Dimensions:  
6 1/2" (W) x 2 7/8" (H) x 1" (D)
- Also available: FastHome™ enclosures and phone, TV, audio and power modules



Power Supply Included

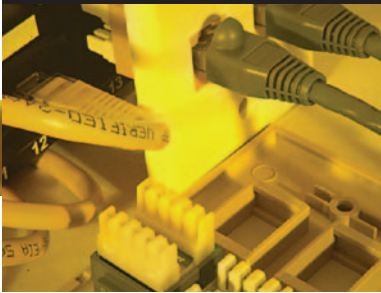
550-060

## Product Description

From a centralized location, the FastHome™ Ethernet Switch Module creates an Ethernet data network and connects up to 5 personal computers and peripherals in the home. The module supports IEEE 802.3/802.3u standards (10/100Mbps) and includes a 12VDC 500mA power supply. Auto-negotiation is featured on all 5 ports of the module. There are LED panel indicators for power on and high-speed access/status. Gold-plated beryllium copper RJ45 contacts ensure long-lasting, reliable connections. This module is constructed of high-impact ABS plastic for durability. Installation of the module in a FastHome™ enclosure is easy, as nylon pins snap the unit into place without tools.

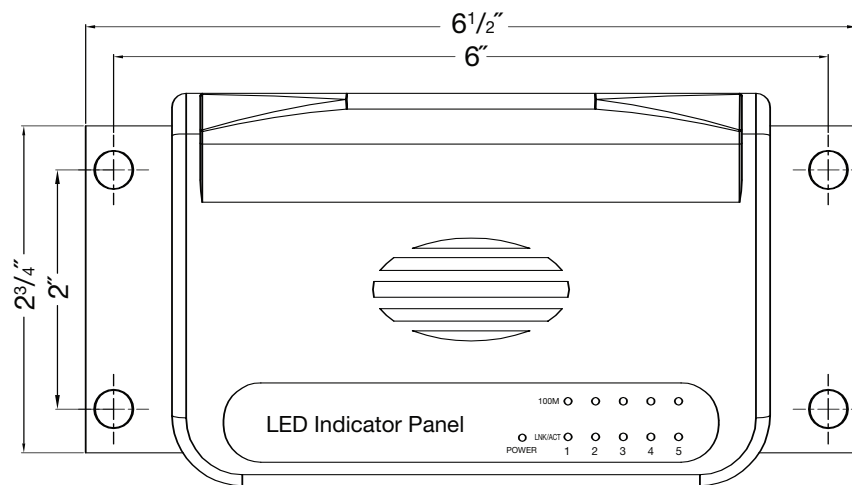
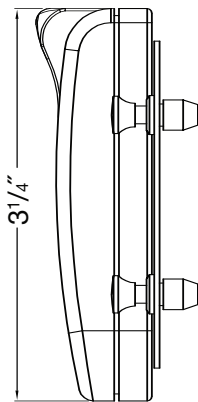
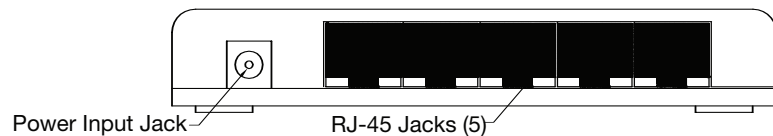
PR-014

## New Product Release



# FastHome™ Ethernet Switch Module

## Specifications



### Mechanical Construction

Body: High-Impact ABS Plastic

RJ45 Contacts: Gold-Plated Beryllium Copper

Uplink Port: Slide Switch

Pins: Nylon, Black

Power Supply: 12VDC, 500mA

### Other FastHome™ Products

- 550-010** Telephone/TV Hub Module
- 550-020** Telephone Hub Module
- 550-030** Data Hub Module
- 550-040** TV Combiner/Splitter Module
- 550-050** Audio Splitter Module
- 550-070** Power Module
- 550-080** RF Modulator Module
- 550-100** 11" Surface Mount Enclosure (7" W x 11" H x 3<sup>5</sup>/<sub>16</sub>" D)
- 550-105** 19" Surface Mount Enclosure (14<sup>9</sup>/<sub>16</sub>" W x 19" H x 4<sup>5</sup>/<sub>16</sub>" D)
- 550-200** 19" Flush Mount Enclosure (14<sup>3</sup>/<sub>8</sub>" W x 19" H x 3<sup>1</sup>/<sub>2</sub>" D)
- 550-205** 32" Flush Mount Enclosure (14<sup>3</sup>/<sub>8</sub>" W x 32" H x 3<sup>1</sup>/<sub>2</sub>" D)
- 550-210** 44" Flush Mount Enclosure (14<sup>3</sup>/<sub>8</sub>" W x 44" H x 3<sup>1</sup>/<sub>2</sub>" D)

### Ordering Information:

**550-060** FastHome™ Ethernet Switch Module

### Packaging

Each FastHome™ module is boxed individually.

PR-014