

CertainTeed

CERTA-LOK™ YELOMINE™

Restrained Joint PVC Pressure Piping System

Trenchless • Municipal • Mining • Irrigation

Modified PVC

Sunlight-Resistant,
High-Impact Formulation



Listed for
Potable Water
Applications



CertainTeed 

Quality made certain. Satisfaction guaranteed.™

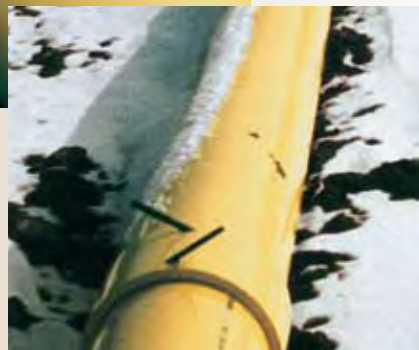
CERTA-LOK™ YELOMINE™

Restrained Joint PVC Pressure Piping System

FOR TRENCHLESS, MINING, INDUSTRIAL AND OTHER APPLICATIONS

2

Certa-Lok™ Yelomine™ is designed and engineered to meet your tough or restrained joint piping requirements. The Certa-Lok Yelomine piping system can provide a unique solution to many of your specialty and standard piping system needs, whether for temporary or permanent installations.



Certa-Lok Yelomine is performance proven for a broad range of piping applications.

The unique Certa-Lok Yelomine joining system and superior physical properties limit possible applications to only the imagination and ingenuity.

Certa-Lok Yelomine pipe and fittings are available in 2" through 16" diameters, in pressure classes of 125 to 315 psi. Low pressure (100 psi) pipe is also available – call for details. Certa-Lok Yelomine is manufactured with IPS outside diameters and is available in 20' laying lengths.

CertainTeed Certa-Lok Yelomine is manufactured from a specially formulated PVC compound that contains impact modifiers and UV (Ultraviolet) inhibitors. These modifiers and inhibitors provide higher impact strength over an extended period of time and allow Certa-Lok Yelomine to be used in above-ground, exposed applications as well as in underground or buried applications.

Only high-strength PVC compound having a minimum cell classification of 12454, as defined in ASTM D1784, is used in the production of Yelomine pipe and couplings.

The inherent properties of PVC provide a product that will not rust or corrode, and is extremely resistant to harsh environments, acids and most chemicals.



What Makes Certa-Lok Yelomine unique is its self-restraining joint.

Certa-Lok Yelomine pipe, couplings and fittings provide a restrained joint by utilizing precision-machined grooves on the pipe and in the coupling which, when aligned, allow a spline to be inserted, resulting in a fully circumferential restrained joint that locks the pipe and coupling together. A flexible elastomeric seal (O-ring) in the coupling provides a hydraulic pressure seal.

The Certa-Lok joint is fast, simple and reliable, and requires no solvent welding, butt fusion welding, bolting, wrenches, or specialty equipment to assemble. Assembled joints are strong and typically require no thrust blocking.

Certa-Lok Yelomine joints can be easily disassembled, allowing for system changes, extension, movement or reuse of the entire system.

CertainTeed offers a comprehensive line of Certa-Lok Yelomine fittings: change of direction (elbows, sweeps, tees), adapters to other materials, joining systems (flange adapters, threaded adapters, victaulic), service outlets (tapped couplings), and so on.

Certa-Lok Yelomine allows for easy field fabrication. When making field

cuts, it is best to use a PVC pipe cutter to ensure a square cut end. Square cuts are essential to ensure proper alignment. A conventional saw or power saw may be used if a pipe cutter is not available. CertainTeed offers a power routing tool for field fabrication of the pipe groove required on Certa-Lok Yelomine. For cutting and grooving instructions, see 40-90-43, "Certa-Lok Yelomine Specifications and Dimensions."

APPLICATIONS

- Above-Ground Pressure Lines
- Buried Pressure Lines
- Bridge Crossings
- River & Creek Crossings
- Drip Irrigation
- Solid Set Irrigation
- Slurry Lines
- Supply Lines (Permanent)
- Supply Lines (Temporary)
- Trenchless
- Temporary Bypass
- Industrial Piping
- Process Piping
- Transmission Lines
- Lake and Pond Intake
- Dredging
- Acid Waste
- Tough Terrain
- Aeration Supply Lines
- Boat Dock Water & Sewer Lines
- Sewer Force Mains
- Unstable Soil Applications
- Oil Field Lead Lines
- Oil Field Salt Water Disposal
- Bridge & Highway Drainage
- Center Pivot Sprinkler Lines
- Fire Protection Lines
- Temporary Potable Water & Fire Supply Lines for Recreation Areas
- Leachate Collection
- Methane Gas Collection
- Road Crossings
- In-situ Mining Wells
- Heap-Leach Mining
- Vacuum Lines
- Dewatering Systems
- Effluent and Reclaimed Water Lines
- Emergency Water Systems



Non-Permanent Use and Permanent Use

4

CERTA-LOK JOINT

Certa-Lok Yelomine pipe and fittings have been successfully servicing the industry for many years. In order to enhance performance and better accommodate customer needs, CertainTeed offers two types of Certa-Lok Yelomine: Permanent Use and Non-Permanent Use. Both couplings are similar in design: the main difference is the O-ring supplied. Non-Permanent O-rings have a slightly reduced cross-section for easy assembly and disassembly. Permanent Use O-rings have a slightly larger cross-section and are not designed for disassembly. Both types of rings are Teflon®-coated. Permanent Use Certa-Lok Joints require lubricant to assemble, which is supplied in sufficient quantities by CertainTeed.



Yelomine IB trenchless installation

Permanent Use Certa-Lok Joint

SIZES 2" THRU 16"

Permanent Use Certa-Lok Joints utilize an O-ring with a slightly larger cross-section. The joint assembles easily with lubricant. Disassembly can be achieved, but can be extremely difficult depending on the diameter of the piping system.

Permanent Use Certa-Lok Joints are intended for use in all installations that do not require disassembly during the service life of the system. Applications include buried installations, bridge, river and road crossings, and all installations that would expose joints to long-term or excessive misalignment due to external loads. CertainTeed supplies sufficient lubricant for Permanent Use Certa-Lok Joint installations.

If in doubt as to which system, Non-Permanent or Permanent Use, is best suited for your application, contact your local CertainTeed distributor or CertainTeed Territory Sales Manager.

WARNING: Under no circumstances is Certa-Lok Yelomine to be used for pressurized air or gas handling. Sudden release of stored energy in a compressible fluid can result in catastrophic failure.

Non-Permanent Use Certa-Lok Joint

SIZES 2" THRU 16"

Non-Permanent Use Certa-Lok Joints are typically used in above-ground, exposed installations, such as mining, irrigation, temporary bypass or slurry lines, or any installation that requires disassembly and reuse.

CAUTION: Non-Permanent Use Certa-Lok Joints should not be used in buried or submerged applications.

CERTA-LOK YELOMINE

Fundamental Features and Advantages



Impact Strength

Certa-Lok Yelomine greatly exceeds the impact strength of conventional PVC. Impact strength tests are regularly made on the product in accordance with ASTM standard test method D 2444. **Average impact values are up to five times greater than the impact resistance of conventional PVC pipe.**

CertainTeed Impact Production Specifications

Impact Strength, ft.- lbs.

NOM. SIZE	SDR 32.5	SDR 26	SDR 21	SDR 17	Std. Pipe (ALL SDR'S)
2"	--	--	--	170	30
3"	--	--	--	245	60
4"	--	210	255	320	90
6"	250	305	380	470	120
8"	300	400	495	610	160
10"	350	500	530	--	160
12"	400	500	530	--	160

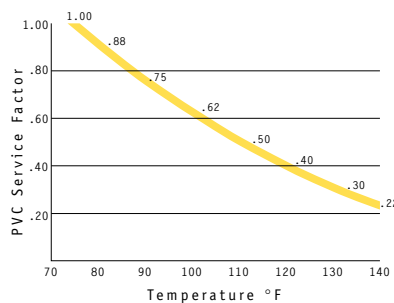
NSF Approved

Yelomine is designed and manufactured in accordance with ASTM D2241. 2" through 16" PVC pipe and couplings up to Class 250 are listed in NSF Standard 14, "Plastic Piping System Components and Related Materials" for performance. All other products have a potable water listing in accordance with NSF61.



PVC Temperature Service Factor

All pressure ratings for PVC pipe are determined in a water environment of 73.4°F (±3.6°F). As the temperature of the environment increases, PVC pipe becomes more ductile. This can be represented by graphs that show that the impact strength increases and the tensile strength decreases as the temperature rises. Because of this effect, the pressure rating of the pipe must be decreased to allow for safe operation of the line at elevated temperatures.



PVC Pipe Pressure Ratings for temperatures from 73.4°F to 140°F (For pressure rating at a temperature above 73.4°F, multiply the rating at 73.4°F by the corresponding service factor from the graph).

Non-Corrosive/ Chemical Resistant

Certa-Lok Yelomine is an excellent product for harsh environments. The inherent properties of PVC provide a product that is a non-conductor, which will not rust or corrode. Certa-Lok Yelomine is a product that does not require any cathodic protection, coating, wraps or other corrosion protection. PVC is extremely resistant to acids and most chemicals, and is unaffected by "hot" (aggressive) soils. Certa-Lok Yelomine has outstanding resistance to scale and scale build up. And, if necessary, it can be cleaned by pigging the line.

Special splines and O-rings may be required in either extremely acidic applications or hydrocarbon environments.

High Flow Rate

Certa-Lok Yelomine offers a smooth, non-wettable interior surface that accounts for a Hazen-Williams flow coefficient of C=150.

Light Weight

Two-inch Certa-Lok Yelomine weighs less than one pound per foot; 12" diameter (SDR26) weighs only 13 pounds per foot. This means most pipe sizes can be easily handled manually, even in 20' lengths, thus eliminating the need for heavy lifting equipment, and providing the ability to get into hard-to-reach areas like those found in coal mines and tunnels.





No Thrust Blocking Required
Certa-Lok Yelomine does not typically require thrust blocking for support, due to its restrained joint design.

When adapting to other piping systems, such as victaulic, metal pipe or non-restrained joints, use of thrust blocking is necessary. Also, connections to valves, pumps, pressure regulators and other appurtenances may require normal thrust blocking.

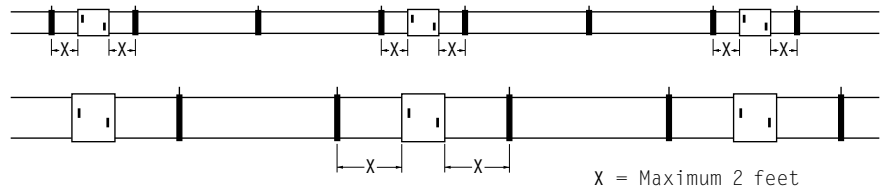
Flexibility

Certa-Lok Yelomine can bend easily around many obstructions, typically reducing the number of fittings required. Pipe *must not* be bent to a lesser (tighter) radius than shown below.

Nom. Size	Minimum Radius of Curvature (feet)*	Offset per 20' length (inches)*
2"	40	59
3"	58	41
4"	75	32
6"	110	22
8"	144	17
10"	179	13
12"	213	11
16"	267	9

*Pressure applications (non-tapped pipe)

Support Spacing for Above-Ground Applications



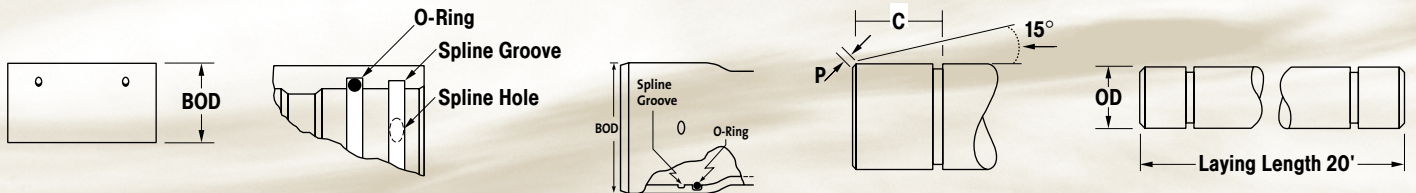
In some above-ground applications, Certa-Lok Yelomine is suspended on hangers, brackets or other supports. Proper bearing and spacing of supports is necessary to prevent excessive bending or sagging.

Supports must provide a smooth bearing surface conforming to the contour of the bottom half of the pipe. Bearing surfaces must be a minimum of 2" wide. Supports must permit longitudinal pipe movement for expansion and contraction, and must be mounted in such a way as to prevent lateral or vertical pipe movement. It is recommended that a support be secured to the pipe on both sides of a joint in order to minimize load on the joint, with the spacing between support and joint not to exceed 2 feet. The table can be used as a guide in determining hanger spacing and weight to be suspended.

Support Spacing for Suspended Pipe	
SIZE	SUPPORT SPACING
2" - 4"	4' - 8'
6"	7' - 10'
8" - 16"	8' - 17'

General guidelines only; consult the Uni-Bell Handbook of PVC Pipe Design and Construction for specific recommendations.

DIMENSIONS



Yelomine Integral Bell (IB) Piping Products

O-ring and Spline included

Size	PSI Rating	SDR	O.D.	BOD	P	C	Min. Wall	Weight Lbs/ft	Part No. ①
4"	200	21	4.500	5.11	.188	3.00	.214	1.86	266225
4"	250	17	4.500	5.27	.188	3.00	.265	2.26	266218
6"	200	21	6.625	7.50	.219	3.00	.316	3.99	266249
6"	250	17	6.625	7.74	.219	3.00	.390	4.87	266232
8"	200	21	8.625	9.75	.656	3.16	.410	6.72	266379

Certa-Lok Yelomine Pipe with Couplings

Certa-Lok Coupling, O-ring and Spline Included ②

Size	PSI Rating	SDR	O.D.	BOD	P	C	Min. Wall	Weight Lbs/ft	Part No. ①②
2"	250	17	2.375	3.20	.188	1.75	.140	0.69	216213
3"	250	17	3.500	4.38	.188	2.50	.206	1.47	217210
4"	200	21	4.500	5.47	.188	3.00	.214	2.00	226212
4"	250	17	4.500	5.47	.188	3.00	.265	2.41	218217
4" HP	315	13.5	4.500	5.96	.188	3.00	.337	3.17	250217
6"	125	32.5	6.625	7.84	.313	3.00	.204	2.97	243219
6"	160	26	6.625	7.84	.313	3.00	.255	3.57	235214
6"	200	21	6.625	7.84	.313	3.00	.316	4.27	227219
6"	250	17	6.625	7.84	.313	3.00	.390	5.13	219214
6" HP	315	13.5	6.625	8.37	.313	3.00	.491	6.63	251214
8"	125	32.5	8.625	10.19	.656	3.16	.265	4.97	244216
8"	160	26	8.625	10.19	.656	3.16	.332	6.07	236211
8"	200	21	8.625	10.19	.656	3.16	.410	7.24	228216
8"	250	17	8.625	10.95	.656	3.16	.508	9.17	220210
8" HP	315	13.5	8.625	10.95	.656	3.16	.748	11.29	237218
10"	125	32.5	10.750	12.44	.656	3.50	.331	7.49	245213
10"	160	26	10.750	12.44	.656	3.50	.413	9.19	214219
10"	200	21	10.750	12.44	.656	3.50	.511	10.98	230219
12"	125	32.5	12.750	14.65	.656	3.50	.392	10.57	246210
12"	160	26	12.750	14.65	.656	3.63	.490	12.88	215223
12"	200	21	12.750	14.65	.656	3.63	.606	15.64	239229
16"	90 ③	26	16.000	17.40	.656	3.61	.615	20.39	248214 ④
16"	160	26	16.000	17.50	.656	3.61	.615	20.55	248214 ④
16"	200	21	16.000	17.50	.656	3.61	.761	25.18	248337

HP = High Pressure

Note: All dimensions are in inches and are subject to normal manufacturing tolerances.

① Specify Permanent or Non-Permanent.

② Pipe may also be purchased without couplings, if desired. Use same part number, and specify "Pipe Only" on P.O.

③ PSI on this item is limited by the pressure rating of the coupling.

④ Specify desired pressure rating on P.O.

JOINT ASSEMBLY

Certa-Lok Yelomine Restrained Joint PVC Pipe



Clean

Clean interior of coupling and pipe spigot. Use a clean rag or paper towel to remove all foreign material. Make sure gaskets are clean and evenly seated in the gasket groove.

Lubrication

Lubrication is typically not required on Non-Permanent Use Certa-Lok Yelomine Joints up to 6" in diameter.

Lubrication is required on all Permanent Use Certa-Lok Yelomine Joints, and all non-permanent sizes above 6".

CertainTeed supplies sufficient lubricant to join the pipe. Use only approved lubricant supplied by CertainTeed.

CAUTION: Lubricants not specifically formulated for this purpose may deteriorate the pipe and/or the gasket.

When using lubricant, apply only to the exposed gasket surface and to the tapered end of the pipe. Do not apply lubricant to the pipe or coupling spline grooves or spline. Lubricant in these areas can reduce joint strength.

Assembly

After applying lubricant, align the pipe and coupling and push the pipe into the coupling. When the pipe end seats against the stop in the coupling, spline grooves are automatically aligned for spline insertion. Use a bar and block if needed; a "Comealong" or puller also can be used if sufficient care is taken to protect the pipe from chains.

The spline is then inserted through the spline insertion hole in the coupling and into the aligned grooves, until it has traveled a full 360° and is seated against itself (CertainTeed offers a spline insertion tool that may be helpful, especially in larger pipe sizes).

The spline securely locks the coupling to the pipe. The gasket in the coupling is designed to provide a hydraulic seal. Note: If needed, the joint can be disassembled and re-used to allow for system changes, extension or removal for re-use.



ASK ABOUT OUR OTHER CERTAINTEED PRODUCTS AND SYSTEMS:

EXTERIOR: ROOFING • SIDING • WINDOWS • FENCE • RAILING • TRIM • DECKING • FOUNDATIONS • PIPE
INTERIOR: INSULATION • WALLS • CEILINGS

CertainTeed Corporation
P.O. Box 860
Valley Forge, PA 19482

Telephone: 866-CT4-PIPE (866-284-7473)
Fax: 610-254-5428
www.certainteed.com

CertainTeed 