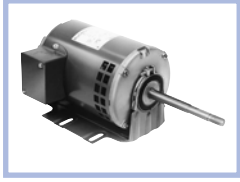


Commercial Laundry Dryer

Single Phase, Dripproof, Resilient Base



Applications: Commercial laundry dryer motors.

- Features:**
- Replaces Huebsch commercial laundry dryer motors
 - Automatic reset thermal protection
 - Special threaded shaft extension
 - X602 has 3/4" shaft adapter included
 - Ball bearings
 - 48YZ have 48/56 Fr. mounting holes

HP	RPM	VOLTS	FRAME	CAT. NO.	MODEL NO.	LIST PRICE	MULT. SYMB.	F.L. AMPS	APPROX. WGT. LBS.	"C" DIM.	FOOT NOTES
1/4	1725	100-120/200-240	48YZ	X600	48C17D2057	\$222	F1	5.4-6.6/2.7-3.3	18	12.02	16,68
1/3	1725	115/208-230	56Z	X601 *	56C17D2101	\$263	F1	5.8/2.8-2.9	19	14.41	16
1/2	1725	115/208-230	56Z	X602 *	56C17D2102	\$324	F1	8.0/4.0-4.0	23	15.41	16
3/4	1725	115/208-230	56Z	X603 *	56C17D5346	\$408	F1	12.0/5.8-6.0	25	15.10	16

★ Stock Model

Commercial Laundry Dryer

Three Phase, Dripproof, Resilient Base or Rigid Base

Applications: Commercial laundry dryer motors.

- Features:**
- Replaces Huebsch commercial laundry dryer motors
 - Automatic reset thermal protection
 - Special threaded shaft extension on X605
 - Ball bearings
 - 48YZ have 48/56 Fr. mounting holes

HP	RPM	VOLTS	FRAME	CAT. NO.	MODEL NO.	LIST PRICE	MULT. SYMB.	F.L. AMPS	APPROX. WGT. LBS.	"C" DIM.	FOOT NOTES
1/4	1725	200-240/460-480	48YZ	X605 *	48T17D2002	\$249	F1	1.3-1.8/0.8-0.9	17	12.02	d,12,68
1/3	1725	230/460	56	X606	56T17D3318	\$289	F1	1.6/0.8	22	10.35	68
1/2	1725	230/460	56Z	X607	56T17D3320	\$347	F1	1.7/0.85	28	15.10	68
3/4	1725	230/460	56Z	X608	56T17D3319	\$421	F1	2.4/1.2	29	15.60	68
	1140	208-203/460	56	X609	56T11D5317	\$539	F1	3.1-3.1/1.55	29	11.44	12

★ Stock Model

Commercial Laundry Dryer

Three Phase, Dripproof, C-Face

Applications: Commercial laundry dryer motors.

- Features:**
- Replaces Huebsch commercial laundry dryer motors
 - Automatic reset thermal protection
 - Special threaded shaft extension
 - Ball bearings

HP	RPM	VOLTS	FRAME	CAT. NO.	MODEL NO.	LIST PRICE	MULT. SYMB.	F.L. AMPS	APPROX. WGT. LBS.	"C" DIM.	FOOT NOTES
1/4	3450	200-240/460-480	56CZ	X610 *	56T34D5375	\$230	F1	1.4-1.8/0.8-0.9	21	11.80	d,68

★ Stock Model

Footnotes:

- d Will become build-up item when current stock is gone
- 1 Capacitor Start/Capacitor Run design for reduced amperage
- 5 56H, 143T, and 145T Combination Base with 12 mounting holes
- 12 With rigid base
- 16 Fixed CCW Rotation, viewing opposite shaft (or lead end) of motor
- 68 Nameplated 60/50 Hertz

DEFINITE PURPOSE

Kiln Duty, Premium Efficiency Blue Chip Severe Duty Totally Enclosed Air Over

Three Phase, Rigid Base

Applications: Fans found in kilns and other high ambient environments where long life and high efficiency are desired. These TEAO motors must be mounted within the airstream for proper cooling. Suitable for use on variable frequency drives.



- Features:**
- Blue Chip quality, 100% cast iron construction for rigidity and reduced vibration
 - Internal and external epoxy paint
 - CR²⁰⁰ Corona resistant magnet wire
 - Class H insulation system
 - Normally closed thermostats
 - Heat stabilized ball bearings and high temperature grease
 - Suitable for inverter use for 20:1 Variable Torque with 1.0 S.F.
 - Suitable for 90°C ambient at 1.15 S.F. or 100°C ambient at 1.0 S.F.
 - Extended grease tubes, regreasable in service
 - 8 Foot Leads
 - UL Recognized and CSA Certified

HP	RPM	VOLTS	FRAME	CAT. NO.	MODEL NO.	LIST PRICE	MULT. SYMB.	NOM. EFF.	F.L. AMPS	APPROX. WGT. LBS.	"C" DIM.	FOOT NOTES
1	1800	460	143T	S500	----	\$1,129	E9	85.5	1.5	65	10.43	
	1800	575	143T	S550	----	\$1,129	E9	85.5	1.2	65	10.43	
	1200	460	145T	S501	145TTTN18577	\$1,218	E9	80.0	1.7	59	11.43	
	1200	575	145T	S551	----	\$1,218	E9	80.0	1.4	59	11.43	
	900	460	182T	S502	----	\$1,699	E9	74.0	2.2	100	12.71	
	900	575	182T	S552	----	\$1,699	E9	74.0	1.8	100	12.71	
2	1800	460	145T	S503	145TTTN18531	\$1,218	E9	85.5	2.8	68	11.43	
	1800	575	145T	S553	145TTTN18532	\$1,218	E9	85.5	2.3	68	11.43	
	1200	460	184T	S504★	184TTTS18577	\$1,684	E9	87.5	3.0	115	13.71	d
	1200	575	184T	S554	184TTTS18578	\$1,684	E9	87.5	2.4	115	13.71	
	900	460	213T	S505	----	\$1,788	E9	84.0	3.8	170	15.69	
	900	575	213T	S555	----	\$1,788	E9	84.0	3.0	170	15.69	
3	1800	460	182T	S506	182TTTS18532	\$1,646	E9	90.2	3.9	110	13.71	
	1800	575	182T	S556	----	\$1,646	E9	89.5	3.2	110	13.71	
	1200	460	213T	S507	213TTTS17077	\$1,788	E9	89.5	4.3	175	15.69	
	1200	575	213T	S557	213TTTS17078	\$1,788	E9	89.8	3.5	175	15.69	
	900	460	215T	S508	----	\$2,059	E9	86.5	5.0	200	17.18	
	900	575	215T	S558	215TTTS18064	\$2,059	E9	86.5	4.0	200	17.18	
5	1800	460	184T	S509	----	\$1,684	E9	90.2	6.5	130	13.71	
	1800	575	184T	S559	----	\$1,684	E9	90.2	5.0	130	13.71	
	1200	460	215T	S510★	215TTTS17077	\$2,059	E9	87.5	6.9	200	17.19	
	1200	575	215T	S560★	215TTTS17078	\$2,059	E9	88.5	5.5	200	17.19	
	900	460	254T	S511	----	\$2,211	E9	88.5	7.5	375	20.60	
	900	575	254T	S561	----	\$2,211	E9	88.5	6.0	375	20.60	
7 1/2	1800	460	213T	S512	----	\$1,982	E9	91.7	9.6	200	15.69	
	1800	575	213T	S562	----	\$1,982	E9	91.7	7.7	200	15.69	
	1200	460	254T	S513★	254TTTNA17077	\$3,025	E9	90.2	9.8	375	20.60	
	1200	575	254T	S563	----	\$3,025	E9	90.2	7.9	375	20.60	
	900	460	256T	S514	----	\$2,828	E9	88.5	11.0	425	22.35	
	900	575	256T	S564	256TTTNA18601	\$2,828	E9	88.5	8.6	425	22.35	
10	1800	460	215T	S515	----	\$2,059	E9	91.7	12.5	225	17.19	
	1800	575	215T	S565	----	\$2,059	E9	91.7	10.0	225	17.19	
	1200	460	256T	S516★	256TTTNA18578	\$2,895	E9	91.0	12.8	425	22.35	
	1200	575	256T	S566★	256TTTNA18577	\$2,895	E9	91.0	10.2	425	22.35	d
	900	460	284T	S517	284TTTNA18601	\$3,001	E9	88.5	15.2	475	23.44	
	900	575	284T	S567★	284TTTNA17101	\$3,001	E9	88.5	12.2	475	23.44	

Blue shaded areas are Cast Iron Frames

★ Stock Model

Footnotes:

d Will become build-up item when current stock is gone

Continued on next page.

DEFINITE PURPOSE

Kiln Duty, Premium Efficiency Blue Chip Severe Duty Totally Enclosed Air Over

Three Phase, Rigid Base

HP	RPM	VOLTS	FRAME	CAT. NO.	MODEL NO.	LIST PRICE	MULT. SYMB.	NOM. EFF.	F.L. AMPS	APPROX. WGT. LBS.	"C" DIM.	FOOT NOTES
15	1800	460	254T	S518	254TTTNA18530	\$2,382	E9	92.4	18.2	425	20.60	
	1800	575	254T	S568	----	\$2,382	E9	92.4	14.4	425	20.60	
	1200	460	284T	S519	284TTTNA16577	\$3,467	E9	91.7	20.5	475	23.44	
	1200	575	284T	S569	284TTTNA18577	\$3,467	E9	91.7	16.4	475	23.44	
	900	460	286T	S520	----	\$3,797	E9	90.2	22.0	550	24.94	
	900	575	286T	S570	----	\$3,797	E9	90.2	17.6	550	24.94	
20	1800	460	256T	S521	----	\$2,762	E9	93.0	24.1	450	22.35	A
	1800	575	256T	S571	----	\$2,762	E9	93.0	19.3	450	22.35	A
	1200	460	286T	S522	286TTTNA18577	\$3,797	E9	91.7	27.0	550	24.94	A
	1200	575	286T	S572	----	\$3,797	E9	91.7	21.4	550	24.94	A
	900	460	324T	S523	324TTTS18601	\$4,640	E9	90.2	29.5	685	26.00	
	900	575	324T	S573	----	\$4,640	E9	90.2	23.5	685	26.00	
25	1800	460	284T	S524	----	\$3,001	E9	93.6	31.0	500	23.44	
	1800	575	284T	S574	----	\$3,001	E9	93.6	24.8	500	23.44	
	1200	460	324T	S525	324TTTS18577	\$4,770	E9	92.4	33.0	675	26.00	
	1200	575	324T	S575	----	\$4,770	E9	92.4	26.5	675	26.00	
	900	460	326T	S526	----	\$5,051	E9	90.2	37.0	750	27.50	
	900	575	326T	S576	----	\$5,051	E9	90.2	29.5	750	27.50	
30	1800	460	286T	S527	----	\$3,797	E9	94.1	36.5	525	24.94	
	1800	575	286T	S577	----	\$3,797	E9	94.1	29.2	525	24.94	
	1200	460	326T	S528	326TTTS18577	\$5,051	E9	93.0	38.0	725	27.50	
	1200	575	326T	S578	----	\$5,051	E9	93.0	31.5	725	27.50	

Blue shaded areas are Cast Iron Frames

★ Stock Model

DEFINITE PURPOSE

Footnotes:

A NEMA Design A

Oil Well Pumpers, Three Phase

Dripproof, Rigid Base

Applications: For use on walking beam pumps found in oil field service.

- Features:**
- NEMA design D for extra high starting and breakdown torques
 - Thermostats for thermal overload protection
 - Fully guarded with screens on all external openings
 - Shaft slinger
 - Low starting current with 5-8% slip
 - Class F insulation
 - F2 conduit box location
 - Copper bar rotor on 500 frame
 - Special "oil well" duty
 - 1.15 Service Factor



HP	RPM	VOLTS	FRAME	BEARINGS	OVER LOAD	CAT. NO.	MODEL NO.	LIST PRICE	MULT. SYMB.	NOM. EFF.	F.L. AMPS	APPROX. WGT. LBS.	"C" DIM.	FOOT NOTES
3	1200	230/460/796	215T	BALL	TSTAT	Y201	215TTDW7376	\$1,205	S7	82.5	10.6/5.3/3.1	80	17.30	
5	1200	230/460/796	215T	BALL	TSTAT	Y202★	215TTDW7377	\$1,392	S7	84.0	16.6/8.3/4.8	118	17.30	
7 1/2	1200	230/460/796	254T	BALL	TSTAT	Y203	254TTDX7377	\$1,791	S7	85.5	22.0/11.0/6.4	220	21.29	
10	1200	230/460/796	256T	BALL	TSTAT	Y204★	256TTDX7391	\$2,209	S7	86.5	29.0/14.5/8.4	225	23.04	
15	1200	230/460/796	284T	BALL	TSTAT	Y215★	284TTDP7692	\$2,672	S7	87.5	41.0/20.5/11.9	332	23.44	
20	1200	230/460/796	286T	BALL	TSTAT	Y216★	286TTDP7689	\$3,251	S7	87.5	53.0/26.5/15.3	375	24.94	
25	1200	460/796	324T	BALL	TSTAT	Y217★	324TTDP7687	\$3,991	S7	88.5	34.0/19.7	490	26.00	
30	1200	460/796	326T	BALL	TSTAT	Y218★	326TTDP7697	\$4,770	S7	88.5	40.0/23.1	548	27.50	
40	1200	460/796	365T	BALL	TSTAT	Y209	365TTDS7383	\$6,263	S7	87.5	48.0/27.7	713	29.93	
50	1200	460/796	404T	BALL	TSTAT	Y210★	404TTDS7387	\$7,567	S7	87.5	60.0/34.5	939	32.81	d
60	1200	460/796	405T	BALL	TSTAT	Y211★	405TTDS7697	\$8,926	S7	87.5	71.0/41.0	1018	34.31	d
75	1200	460/796	444T	BALL	TSTAT	Y212★	444TTDS8699	\$10,020	S7	90.2	91.5/53.0	1226	38.06	
100	1200	460/796	445T	BALL	TSTAT	Y213	445TTDS9477	\$13,361	S7	88.5	124/71.5	1327	40.06	
125	1200	460/796	505U	ROLLER	TSTAT	Y219	505UTDS1584	\$19,574	S7	90.2	175/101	2054	45.19	
150	1200	460/796	505U	ROLLER	TSTAT	Y220	505UTDS1590	\$20,917	S7	91.0	175/101	2282	45.19	

★ Stock Model

Blue shaded areas are Cast Iron Frames

DEFINITE PURPOSE

Footnotes:

d Will become build-up item when current stock is gone

Pressure Washer, Single Phase

Dripproof, Rigid Base



Applications: Portable or stationary high pressure washers and steam cleaners, compressors, and other reciprocating pumps and applications where high starting torque and low running amps are required and motors are installed in a relatively clean, dry environment.

- Features:**
- Ball bearings
 - Heavy gauge steel frame and base
 - Capacitor start/capacitor run design for low amps and high efficiency
 - Continuous duty, 1.15 Service Factor
 - Manual reset thermal protectors on some models
 - UL Recognized and CSA Certified

HP	RPM	VOLTS	FRAME	OVER LOAD	CAT. NO.	MODEL NO.	LIST PRICE	MULT. SYMB.	F.L. AMPS	APPROX. WGT. LBS.	"C" DIM.	FOOT NOTES
3/4	3600	115/208-230	56	MANUAL	D015	56C34D2094	\$233	F1	9.8/4.8-4.9	19	10.97	2
	1800	115/208-230	56	MANUAL	K016	56B17D56	\$324	F1	11.0/5.5-5.5	25	11.47	1
1	3600	115/208-230	56	MANUAL	D010*	56B34D2029	\$267	F1	10.6/5.5-5.3	23	11.72	1
	1800	115/208-230	56	MANUAL	G936*	56C17D5305	\$268	F1	13.4/6.8-6.7	29	11.44	2,7
1 1/2	3600	115/208-230	56	MANUAL	G987	56B34D2021	\$363	F1	14.8/8.0-7.4	27	11.72	1
	1800	115/208-230	56H	MANUAL	G958*	56B17D5323	\$429	F1	13.2/7.2-6.6	39	11.94	1,5,7
2	3600	115/208-230	56H	MANUAL	G976	56B34D5304	\$449	F1	17.6/9.7-8.8	34	11.44	1,5,7
	1800	115/208-230	145T	MANUAL	I127*	145TBDR5337	\$497	S1	18.8/10.2-9.4	50	13.49	1,7
	1800	115/208-230	56H	MANUAL	G979	56B17D5319	\$566	F1	18.8/10.2-9.4	50	13.44	1,5,7
3	3600	208-230	56H	MANUAL	G996	56B34D5334	\$576	F1	14.2-12.5	43	12.44	1,5,7
	1800	208-230	184T	NONE	I128*	184TBDR7631	\$580	S1	15.4-13.7	82	15.22	1
	1800	208-230	184T	MANUAL	I130	184TBDR7630	\$629	S1	15.4-13.7	82	15.22	1
5	1800	208-230	184T	MANUAL	I119*	184TBDR7375	\$829	S1	25.0-24.1	82	16.22	1
	1800	208-230	184T	NONE	I131*	184TBDR7632	\$837	S1	25.0-24.1	80	16.22	1

* Stock Model

Pressure Washer, Single Phase

Dripproof, C-Face with Rigid Base



Applications: Portable or stationary high pressure washers and steam cleaners, compressors, and other reciprocating pumps and applications where high starting torque and low running amps are required and motors are installed in a relatively clean, dry environment. NEMA C-Face mounting provisions for direct-coupled applications.

- Features:**
- Ball bearings, mechanically locked on shaft end
 - Heavy gauge steel frame and base
 - Capacitor start/capacitor run design for low amps and high efficiency
 - Continuous duty, 1.15 Service Factor
 - Manual reset thermal protector
 - UL Recognized and CSA Certified

HP	RPM	VOLTS	FRAME	OVER LOAD	CAT. NO.	MODEL NO.	LIST PRICE	MULT. SYMB.	F.L. AMPS	APPROX. WGT. LBS.	"C" DIM.	FOOT NOTES
1 1/2	3600	115/208-230	56C	MANUAL	K212	56B34D2018	\$380	F1	14.8/8.0-7.4	28	11.72	
	1800	115/208-230	56HC	MANUAL	G290	56B17D5328	\$445	F1	13.2/7.2-6.6	44	11.94	5
2	3600	115/208-230	56HC	MANUAL	G294	56B34D5307	\$464	F1	16.8/9.4-8.4	36	11.44	5
	1800	115/208-230	56HC	MANUAL	K232*	56B17D5322	\$554	F1	18.8/10.2-9.4	50	13.43	5
3	3600	208-230	56HC	MANUAL	K219	56B34D5336	\$591	F1	14.2-12.5	42	12.44	5
	1800	208-230	184TC	MANUAL	I305	184TBDR7628	\$689	S1	15.4-13.7	87	15.96	
5	1800	208-230	184TC	MANUAL	I308	184TBDR7634	\$949	S1	25.0-24.1	97	16.96	

* Stock Model

Footnotes:

1 Capacitor Start/Capacitor Run design for reduced amperage
 2 Capacitor Start Induction Run design

5 56H, 143T, and 145T Combination Base with 12 mounting holes
 7 Will accept C-Face kit, see Accessory Section

Pressure Washer, Single Phase

Totally Enclosed Fan Cooled, Rigid Base

Applications: Portable or stationary high pressure washers and steam cleaners, compressors, and other reciprocating pumps and applications where high starting torque and low running amps are required and motors are installed in a dirty or dusty environment.



- Features:**
- Ball bearings
 - Heavy gauge steel frame and base
 - Capacitor start/capacitor run design for low amps and high efficiency
 - Continuous duty, 1.15 Service Factor
 - Manual reset thermal protector
 - UL Recognized and CSA Certified

HP	RPM	VOLTS	FRAME	OVER LOAD	CAT. NO.	MODEL NO.	LIST PRICE	MULT. SYMB.	F.L. AMPS	APPROX. WGT. LBS.	"C" DIM.	FOOT NOTES
3/4	3600	115/208-230	56	MANUAL	G379★	56C34F5309	\$259	F1	10.6/5.3-5.3	28	12.32	2,7
	1800	115/208-230	56	MANUAL	G356★	56C17F5308	\$357	F1	11.0/5.4-5.5	29	12.32	2,7
1	3600	115/208-230	56	MANUAL	G390★	56C34F5311	\$293	F1	12.4/6.7-6.2	31	12.32	2,7
	1800	115/208-230	56	MANUAL	G373★	56C17F5311	\$374	F1	13.4/6.8-6.7	32	12.82	2,7
1 1/2	3600	115/208-230	56	MANUAL	K332	56B34F5303	\$397	F1	12.1/6.9-6.1	37	13.32	1,7
	1800	115/208-230	56H	MANUAL	G378★	56B17F5302	\$429	F1	15.2/8.2-7.6	41	13.82	1,5,7
2	3600	115/230	56H	MANUAL	K335	-----	\$434	F1	17.5/8.7	40	13.32	1,5,7
	1800	115/230	56H	MANUAL	K316	-----	\$530	F1	18.8/9.4	52	14.82	1,5,7
	1800	115/230	145T	MANUAL	I702★	145TBFR5336	\$550	S1	18.8/9.4	52	14.87	d,1,7
3	3600	230	56H	MANUAL	K338	-----	\$603	F1	11.8	51	14.82	1,5,7
	1800	230	184T	MANUAL	I704	-----	\$778	S1	13.7	88	16.86	1
5	1800	230	184T	MANUAL	I706	-----	\$961	S1	21.0	95	17.86	1

★ Stock Model

Pressure Washer, Single Phase

Totally Enclosed Fan Cooled, C-Face with Rigid Base

Applications: Portable or stationary high pressure washers and steam cleaners, compressors, and other reciprocating pumps and applications where high starting torque and low running amps are required and motors are installed in a dirty or dusty environment. NEMA C-Face mounting provisions for direct-coupled applications.



- Features:**
- Ball bearings, mechanically locked on shaft end
 - Heavy gauge steel frame and base
 - Capacitor start/capacitor run design for low amps and high efficiency
 - Continuous duty, 1.15 Service Factor, except where noted
 - Manual reset thermal protector
 - UL Recognized and CSA Certified

HP	RPM	VOLTS	FRAME	OVER LOAD	CAT. NO.	MODEL NO.	LIST PRICE	MULT. SYMB.	F.L. AMPS	APPROX. WGT. LBS.	"C" DIM.	FOOT NOTES
1/2	1800	115/208-230	56C	MANUAL	G380	56C17F5957	\$330	F1	8.8/4.2-4.4	27	11.82	2
3/4	1800	115/208-230	56C	MANUAL	G381★	56C17F5955	\$395	F1	11/5.4-5.5	33	12.32	2
1	1800	115/208-230	56C	MANUAL	G382★	56C17F5956	\$413	F1	13.4/6.8-6.7	35	12.82	2
1 1/2	3600	115/208-230	56C	MANUAL	K612★	56B34F5306	\$412	F1	12.1/6.9-6.0	40	13.32	1
	1800	115/208-230	56HC	MANUAL	G396★	56B17F5310	\$471	F1	13.6/7.5-6.8	45	13.82	1,5
2	3600	115/230	56HC	MANUAL	K615★	56B34F5312	\$489	F1	17.5/8.7	42	13.32	1,5
	1800	115/230	145TC	MANUAL	I311	145TBFR5333	\$666	S1	18.8/9.4	52	14.87	1
	1800	115/230	56HC	MANUAL	K319★	56B17F5319	\$559	F1	18.8/9.4	53	14.82	1,5
3	3600	230	56HC	MANUAL	K618★	56B34F5318	\$617	F1	11.8	52	14.82	1,5
	1800	230	184TC	MANUAL	I314★	184TBFR7041	\$838	S1	13.7	104	17.61	1
5	1800	230	184TC	MANUAL	I315★	184TBFR7034	\$1,000	S1	21.0	98	18.72	1,17

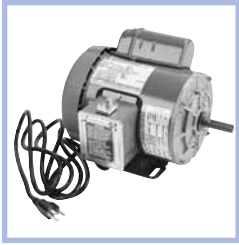
★ Stock Model

Footnotes:

- d Will become build-up item when current stock is gone
- 1 Capacitor Start/Capacitor Run design for reduced amperage
- 2 Capacitor Start Induction Run design
- 5 56H, 143T, and 145T Combination Base with 12 mounting holes
- 7 Will accept C-Face kit, see Accessory Section
- 17 1.0 Service Factor

Woodworking/Power Tool, Single Phase

Totally Enclosed, Rigid Base



Applications: Replacement motors for table saws, planers, lathes, and other equipment found in the woodworking and metalworking trades. These totally enclosed, fan cooled motors are well suited for use in dusty and dirty environments or where wood or metal shavings are present.

- Features:**
- Capacitor start design for high starting torque with low amps
 - Double sealed ball bearings
 - Heavy gauge steel frame and base
 - 1.15 Service Factor
 - Manual reset thermal protector
 - Dependable, dust-proof centrifugal starting switch
 - On/off toggle switch and 8 foot cord with 115 volt plug included on 1/2 to 1-1/2 HP models
 - UL Recognized and CSA Certified

HP	RPM	VOLTS	FRAME	OVER LOAD	CAT. NO.	MODEL NO.	LIST PRICE	MULT. SYMB.	F.L. AMPS	APPROX. WGT. LBS.	"C" DIM.	FOOT NOTES
1/2	1800	115/208-230	56	MANUAL	T010	56C17F5351	\$341	F1	8.8/4.2-4.4	29	11.82	2
3/4	3600	115/208-230	56	MANUAL	T013*	56C34F5340	\$309	F1	10.6/5.3-5.3	43	12.32	2
	1800	115/208-230	56	MANUAL	T014*	56C17F5350	\$399	F1	11.0/5.4-5.5	30	12.32	d,2
1	3600	115/208-230	56	MANUAL	T015*	56C34F5339	\$343	F1	12.4/6.7-6.2	31	12.32	2
	1800	115/208-230	56	MANUAL	T016*	56C17F5349	\$422	F1	13.4/6.8-6.7	31	12.82	d,2
1 1/2	3600	115/208-230	56	MANUAL	T017*	56B34F5332	\$421	F1	14.2/7.7-7.1	35	12.82	1
	1800	115/208-230	56	MANUAL	T018	56B17F5328	\$513	F1	13.6/7.5-6.8	45	13.73	1
2	3600	115/230	56H	MANUAL	T019*	56B34F5333	\$459	F1	17.5/8.7	37	13.41	1,5
	1800	115/230	56H	MANUAL	T030*	56B17F5329	\$566	F1	18.8/9.4	50	14.82	1,5,d
3	3600	208-230	145T	MANUAL	T031*	145TBFR5309	\$636	S1	13.1/11.8	51	14.87	1

* Stock Model

DEFINITE PURPOSE

Footnotes:

- d Will become build-up item when current stock is gone
- 1 Capacitor Start/Capacitor Run design for reduced amperage
- 2 Capacitor Start Induction Run design
- 5 56H, 143T, and 145T Combination Base with 12 mounting holes