

# ODP • 575 VOLT MOTORS

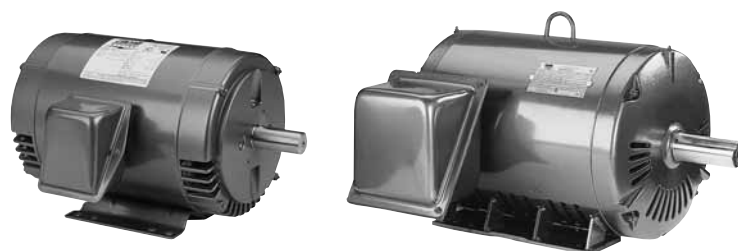
**3-PHASE  
FOOT MOUNT & C-FACE  
1/3 TO 450 HP**



### Features:

- Meets energy efficiency requirements of the United States and Canada.
- Industry leading 1.25 service factor through 200 HP\*
- Superior speed-torque curves – some models\* are nameplated Design B & C - see "Notes" column.
- Continuous Duty
- Construction materials –  
56-256T: steel frame / cast aluminum brackets  
284T-449T: steel frame / cast iron brackets
- Premium Insulation Systems –  
56 frames: Class B  
143T-449T frames: Class F
- Y-delta start capability frames 284T-449T (reference "Y" in Model Number).
- Warranty  
(sine-wave power & inverter power) –  
48 & 56 frames: 18 months from date of manufacture and 12 months from date of installation which ever period expires first.  
143T-256T frames: 30 months from date of manufacture and 24 months from date of installation which ever period expires first.  
(sine-wave power) –  
284T-449T frames: 42 months from date of manufacture and 36 months from date of installation which ever period expires first.
- Shielded ball bearing for direct coupled applications. Contact your local sales office for belted applications.
- Made in the U.S.A.

\* P efficiency codes.



### Applications:

For use where water and dust exposure is moderate. Ideally suited for use on pumps, compressors, blowers, fans and other standard industrial applications.

## FOOT MOUNT

HP	SYN RPM	Frame	FL Nom Eff (%)	SF	Volts	Model Number	Product Number	Notes (see page 306)	Approx Shpg Wght (lbs)	List Price	Mult Sym
1/3	1800	56	65.5	1.15	575	SRD4S0.33T65	LM25054		15	\$276	LT-1A
1/2	3600	56	66.0	1.25	575	SRD2S0.5T65	LM25055		22	278	LT-1A
	1800	56	70.0	1.25	575	SRD4S0.5T65	LM24161		17	318	LT-1A
3/4	3600	56	74.0	1.25	575	SRD2S0.75T65	LM25056		21	326	LT-1A
	1800	56	75.5	1.15	575	SRD4S0.75T65	LM25057		20	353	LT-1A
1	3600	56	74.0	1.25	575	SRD2S1T65	LM25058		24	378	LT-1A
	1800	56	77.0	1.15	575	SRD4S1T65	LM25059		22	367	LT-1A
	1800	143T	82.5	1.25	575	SSD4P1T65	LM24170		34	382	LT-1B
1 1/2	3600	56	80.0	1.15	575	SRD2S1.5T65	LM25060		23	423	LT-1A
	3600	143T	82.5	1.25	575	SSD2P1.5T65	LM25065		28	456	LT-1B
	1800	56H	80.0	1.15	575	SRD4S1.5T65	LM25061		28	389	LT-1A
	1800	145T	84.0	1.25	575	SSD4P1.5T65	LM25066		40	404	LT-1B
2	3600	56H	80.0	1.15	575	SRD2S2T65	LM25062		25	495	LT-1A
	3600	145T	84.0	1.25	575	SSD2P2T65	LM25067		28	537	LT-1B
	1800	56H	81.5	1.15	575	SRD4S2T65	LM25063		36	480	LT-1A
	1800	145T	84.0	1.25	575	SSD4P2T65	LM24124		44	460	LT-1B
3	3600	56H	84.0	1.15	575	SRD2S3T65	LM25064		33	472	LT-1A
	3600	145T	84.0	1.25	575	SSD2P3T65	LM25068		33	493	LT-1B
	1800	182T	86.5	1.25	575	SSD4P3T65	LM24227		83	475	LT-1B
5	3600	182T	86.5	1.25	575	SSD2P5T65	LM25069		88	553	LT-1B
	1800	184T	87.5	1.25	575	SSD4P5T65	LM25070		87	529	LT-1B
7 1/2	3600	184T	87.5	1.15	575	SSD2P7.5T65	LM25071		88	762	LT-1B
	1800	213T	88.5	1.25	575	SSD4P7.5T65	LM24229		121	747	LT-1B
10	3600	213T	88.5	1.25	575	SSD2P10T65	TBD		-	955	LT-1B
	1800	215T	89.5	1.25	575	SSD4P10T65	LM24231	A	138	917	LT-1B

Prices and data subject to change without notice.

Product numbers in red are STOCK items.



# ODP • 575 VOLT MOTORS

**3-PHASE  
FOOT MOUNT & C-FACE  
1/3 TO 450 HP**

## FOOT MOUNT (cont'd)

HP	SYN RPM	Frame	FL Nom Eff (%)	SF	Volts	Model Number	Product Number	Notes (see page 306)	Approx Shpg Wght (lbs)	List Price	Mult Sym
15	3600	215T	89.5	1.25	575	SSD2P15T65	TBD		-	\$1277	LT-1B
	1800	254T	91.0	1.25	575	SSD4P15T65	LM24219		215	1327	LT-1B
20	3600	254T	90.2	1.25	575	SSD2P20T65	TBD		245	1607	LT-1B
	1800	256T	91.0	1.25	575	SSD4P20T65	LM24232	A	233	1667	LT-1B
25	3600	256T	91.0	1.25	575	SSD2P25T65	TBD		-	1957	LT-1B
	1800	284T	91.7	1.25	575	CCD4P25T65Y	LM29581		350	2261	LT-1C
30	3600	284TS	91.0	1.25	575	SD2P30TS65Y	LM20081		348	2623	LT-1C
	1800	286T	92.4	1.25	575	CCD4P30T65Y	LM29865		400	2623	LT1-C
40	3600	286TS	91.7	1.25	575	SD2P40TS65Y	LM15599		389	3389	LT-1C
	1800	324T	93.0	1.25	575	SD4P40T65Y	LM14402	C	469	3395	LT-1C
50	3600	324TS	92.4	1.25	575	SD2P50TS65Y	LM14401		469	4621	LT-1C
	1800	326T	93.0	1.25	575	SD4P50T65Y	LM14405	C	522	3834	LT-1C
60	3600	326TS	93.0	1.25	575	SD2P60TS65Y	LM14404		522	4805	LT-1C
	1800	364T	93.6	1.25	575	SD4P60T65Y	LM18378		712	4858	LT-1C
75	3600	364TS	93.0	1.25	575	SD2P75TS65Y	LM18379		712	6053	LT-1C
	1800	365T	94.1	1.25	575	SD4P75T65Y	LM18384		763	5142	LT-1C
100	3600	365TS	93.0	1.25	575	SD2P100TS65Y	LM18385		763	7465	LT-1C
	1800	404T	94.1	1.25	575	SD4P100T65Y	LM18298		882	6503	LT-1D
125	3600	404TS	93.6	1.25	575	SD2P125TS65Y	LM18296		882	9066	LT-1D
	1800	405T	95.4	1.25	575	SD4P125T65Y	LM18306		958	7488	LT-1D
150	3600	405TS	93.6	1.25	575	SD2P150TS65Y	LM18302		958	10841	LT-1D
	1800	444T	95.0	1.15	575	SD4P150T65Y	LM15101	C	1277	10079	LT-1D
200	3600	444TS	94.5	1.25	575	SD2P200TS65Y	LM15100		1277	13302	LT-1D
	1800	445T	95.0	1.15	575	SD4P200T65Y	LM15106	C	1449	11801	LT-1D
250	3600	445TS	94.5	1.15	575	SD2P250TS65Y	LM15103		1438	17740	LT-1D
	1800	445T	95.4	1.15	575	SD4P250T65Y	LM15104		1438	16362	LT-1D
300	3600	447TS	95.0	1.15	575	SD2P300TS65Y	LM15111		1745	20694	LT-1D
	1800	447T	95.4	1.15	575	SD4P300T65Y	LM15061		1745	17274	LT-1D
350	3600	447TS	95.0	1.15	575	SD2P350TS65Y	LM15108		1745	22764	LT-1D
	1800	447T	95.4	1.15	575	SD4P350T65Y	LM15109		1745	19878	LT-1D
400	3600	449TS	95.4	1.15	575	SD2P400TS65Y	LM15116		2112	25748	LT-1D
	1800	449T	95.4	1.15	575	SD4P400T65Y	LM15117		2112	24834	LT-1D
450	3600	449TS	95.8	1.00	575	SD2P450TS65Y	TBD		TBD	TBD	TBD
	1800	449T	95.8	1.00	575	SD4P450T65Y	TBD		TBD	TBD	TBD

♦ Cast iron design contact Lincoln Motors.  
Prices and data subject to change without notice.

Product numbers in red are STOCK items.

# ODP • 575 VOLT MOTORS

3-PHASE  
FOOT MOUNT & C-FACE  
1/3 TO 450 HP



## C-FACE WITH FEET

HP	SYN RPM	Frame	FL Nom Eff (%)	SF	Volts	Model Number	Product Number	Notes (see page 306)	Approx Shpg Wght (lbs)	List Price	Mult Sym
1/3	1800	56C	67.0	1.35	575	SRD4S0.33TC65	LM25072		15	\$316	LT-1A
1/2	3600	56C	66.0	1.25	575	SRD2S0.5TC65	LM25073		18	318	LT-1A
	1800	56C	68.0	1.15	575	SRD4S0.5TC65	LM25074		17	358	LT-1A
3/4	3600	56C	74.0	1.25	575	SRD2S0.75TC65	LM25075		21	368	LT-1A
	1800	56C	75.5	1.25	575	SRD4S0.75TC65	LM25076		20	395	LT-1A
1	3600	56C	74.0	1.25	575	SRD2S1TC65	LM25077		24	420	LT-1A
	1800	56C	77.0	1.15	575	SRD4S1TC65	LM25078		22	407	LT-1A
	1800	143TC	82.5	1.25	575	SSD4P1TC65	LM25084		34	454	LT-1B
1 1/2	3600	56C	80.0	1.15	575	SRD2S1.5TC65	LM25079		23	464	LT-1A
	1800	56HC	80.0	1.15	575	SRD4S1.5TC65	LM25080		28	429	LT-1A
	1800	145TC	84.0	1.25	575	SSD4P1.5TC65	LM25085		40	477	LT-1B
2	3600	56HC	80.0	1.15	575	SRD2S2TC65	LM25081		25	512	LT-1A
	1800	56C	81.5	1.15	575	SRD4S2TC65	LM25082		36	510	LT-1A
	1800	145TC	84.0	1.25	575	SSD4P2TC65	LM25086		44	510	LT-1B
3	3600	56HC	84.0	1.15	575	SRD2S3TC65	LM25083		33	512	LT-1A
	1800	182TC	86.5	1.25	575	SSD4P3TC65	LM25087		83	598	LT-1B
5	1800	184TC	87.5	1.25	575	SSD4P5TC65	LM25088		93	682	LT-1B
7 1/2	1800	213TC	88.5	1.25	575	SSD4P7.5TC65	LM25089		115	879	LT-1B
10	1800	215TC	89.5	1.25	575	SSD4P10TC65	LM25090	A	138	1082	LT-1B
15	1800	254TC	91.0	1.25	575	SSD4P15TC65	LM25091		215	1421	LT-1B
20	1800	256TC	91.0	1.25	575	SSD4P20TC65	LM25092	A	233	1762	LT-1B
25	1800	284TC	91.7	1.25	575	CCD4P25TC65	LM30138		350	2430	LT-1C
30	1800	286TC	92.4	1.25	575	CCD4P30TC65	LM30139		396	2794	LT-1C
40	1800	324TC	93.0	1.25	575	SD4P40TC65Y	LM14556	C	479	3676	LT-1C
50	1800	326TC	93.0	1.25	575	SD4P50TC65Y	LM14559	C	535	4118	LT-1C
60	1800	364TC	93.6	1.25	575	SD4P60TC65Y	LM19713		724	5198	LT-1C
75	1800	365TC	94.1	1.25	575	SD4P75TC65Y	LM19716		771	5607	LT-1C
100	1800	404TC	94.1	1.25	575	SD4P100TC65Y	LM19719		898	7046	LT-1D
125	1800	405TC	94.5	1.25	575	SD4P125TC65Y	LM19722	C	974	8032	LT-1D
150	1800	444TC	95.0	1.15	575	SD4P150TC65Y	LM19725	C	1292	10751	LT-1D
200	1800	445TC	95.0	1.25	575	SD4P200TC65Y	LM19728	C	1470	12459	LT-1D
250	1800	445TC	95.4	1.15	575	SD4P250TC65Y	LM19731		1459	17013	LT-1D
300	1800	447TC	95.4	1.15	575	SD4P300TC65Y	LM19734		1766	17988	LT-1D

Prices and data subject to change without notice.

Product numbers in red are STOCK items.