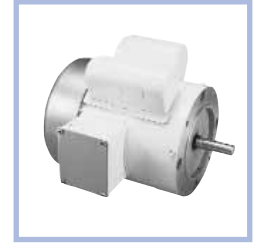


# PowerWash™ XT Washdown Duty, Single Phase

White Epoxy, Totally Enclosed

**Applications:** Gear reducers, pumps, fans, blowers, conveyors, and other machinery found in food processing, dairies, slaughter houses, beverage plants, car washes, and other high humidity or wet environments or where motor is subject to high pressure washdowns.



- Features:**
- Double sealed ball bearings
  - 303 Stainless steel shaft with spring loaded contact seals in each endshield
  - Encapsulated electronic starting switch is impervious to moisture
  - Cast oversized conduit box with high temperature Nitrile gaskets and threaded entrance
  - Internal corrosion resistant coatings on frame, base, endshields, rotor and stator
  - Stainless steel conduit box cover, nameplate, fan guard (TEFC) and hardware
  - USDA-approved, white epoxy RUST-OLEUM® paint
  - Plugged drain holes in each endshield for all angle mounting
  - Capacitor start induction run design for high starting torque unless otherwise noted
  - Class F insulation
  - 1.15 Service Factor
  - UL Recognized and CSA Certified

## Rigid Base

HP	RPM	VOLTS	FRAME	CAT NO.	MODEL NO.	LIST PRICE	MULT SYMB	F.L. AMPS	APPROX. WGT. LBS.	"C" DIM.	FOOT NOTES
1/2	1800	115/208-230	56	N680	56C17W5336	\$427	F3	8.8/4.4-4.4	30	10.81	
3/4	1800	115/208-230	56	N681 *	56C17W5337	\$501	F3	10.8/5.4-5.4	25	11.31	d
1	1800	115/208-230	56	N682	56C17W5338	\$573	F3	12.8/6.4-6.4	34	11.81	
1 1/2	1800	115/208-230	145T	N683	145TCWR5326	\$730	F3	19.0/9.5-9.5	50	13.75	
2	1800	115/208-230	182T	N684	182TCWR7026	\$1,061	F3	25.2/12.6-2.6	60	13.46	

★ Stock Model

## C-Face

HP	RPM	VOLTS	FRAME	CAT NO.	MODEL NO.	LIST PRICE	MULT. SYMB.	F.L. AMPS	APPROX. WGT. LBS.	"C" DIM.	FOOT NOTES
1/3	1800	115/208-230	56C	N531 *	56C17W5326	\$424	F3	6.4/3.2-3.2	26	10.69	
1/2	3600	115/208-230	56C	N532	56C34W5302	\$424	F3	7.6/4.0-3.8	28	10.69	
	1800	115/208-230	56C	N523 *	56C17W5327	\$435	F3	8.8/4.4-4.4	32	11.19	
3/4	3600	115/208-230	56C	N524 *	56C34W5303	\$427	F3	10.0/5.2-5.0	34	11.69	
	1800	115/208-230	56C	N525 *	56C17W5328	\$503	F3	10.8/5.4-5.4	34	11.69	
1	3600	115/208-230	56C	N526 *	56C34W5304	\$429	F3	12.0/6.2-6.0	32	12.19	
	1800	115/208-230	56C	N527 *	56C17W5329	\$570	F3	12.8/6.4-6.4	37	12.19	
1 1/2	3600	115/208-230	56C	N528	56C34W5305	\$633	F3	17.0/8.5-8.5	39	12.69	
	1800	115/208-230	56C	N529	56C17W5330	\$730	F3	19.0/9.5-9.5	46	13.69	

★ Stock Model

## C-Face with Rigid Base

HP	RPM	VOLTS	FRAME	CAT NO.	MODEL NO.	LIST PRICE	MULT. SYMB.	F.L. AMPS	APPROX. WGT. LBS.	"C" DIM.	FOOT NOTES
1/3	1800	115/208-230	56C	N557 *	56C17W5331	\$427	F3	6.4/3.2-3.2	31	10.69	
1/2	3600	115/208-230	56C	N558 *	56C34W5307	\$427	F3	7.6/4.0-3.8	28	10.69	
	1800	115/208-230	56C	N559 *	56C17W5332	\$441	F3	8.8/4.4-4.4	31	11.19	
3/4	3600	115/208-230	56C	N540 *	56C34W5308	\$431	F3	10.0/5.2-5.0	34	11.69	d
	1800	115/208-230	56C	N541 *	56C17W5333	\$500	F3	10.8/5.4-5.4	33	11.69	
1	3600	115/208-230	56C	N542 *	56C34W5309	\$433	F3	12.0/6.2-6.0	34	12.19	
	1800	115/208-230	56C	N543 *	56C17W5334	\$575	F3	12.8/6.4-6.4	36	12.19	
	1800	115/208-230	56HC	N553	56B17T5304	\$521	F3	12.8/6.4-6.4	36	13.43	N,1,5,6
1 1/2	3600	115/208-230	56C	N544 *	56C34W5310	\$634	F3	17.0/8.5-8.5	39	12.69	
	1800	115/208-230	56HC	N545 *	56C17W5335	\$734	F3	19.0/9.5-9.5	45	13.69	5

★ Stock Model

**Footnotes:**

d Will become build-up item when current stock is gone

N Totally Enclosed, Non-Ventilated

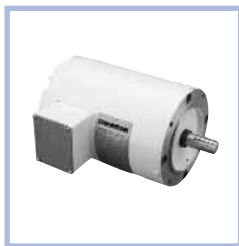
1 Capacitor Start/Capacitor Run design for reduced amperage

5 56H, 143T, and 145T combination base with 12 mounting holes

6 Bolt-on, removable base for footless mounting option.

# PowerWash™ XT Washdown Duty, Three Phase

White Epoxy, Totally Enclosed



**Applications:** Gear reducers, pumps, fans, blowers, conveyors, and other machinery found in food processing, dairies, slaughter houses, beverage plants, car washes, and other high humidity or wet environments or where motor is subject to high pressure washdowns.

- Features:**
- 10:1 Variable torque, Constant torque speed range as listed below
  - MAX GUARD® Class F insulation system
  - 1.15 Service Factor on sinewave, 1.0 Service Factor on IGBT power
  - Double sealed ball bearings
  - 303 Stainless steel shaft with spring loaded contact seals in each endshield (Drive end only on TENV motors)
  - Stainless steel conduit box cover, nameplate, fan guard (TEFC only) and hardware
  - Cast oversized conduit box with high temperature nitrile gaskets and threaded entrance
  - Plugged drain holes in each endshield for all angle mounting
  - Internal corrosion resistant coatings on frame, base, endshields, rotor and stator
  - USDA-approved, white epoxy RUST-OLEUM® paint
  - UL Recognized, CSA Certified and CE Marked



**IP55**



**Rigid Base**

HP	RPM	VOLTS	FRAME	CAT. NO.	MODEL NO.	CT SPEED RANGE*	LIST PRICE	MULT. SYMB.	NOM. EFF.	F.L. AMPS	APPROX. WGT. LBS.	"C" DIM.	FOOT NOTES
<b>1/2</b>	1800	208-230/460	56	N322★	56T17W5344	10:1	\$430	F3	74.0	2.0-2.0/1.0	30	10.81	V
<b>3/4</b>	1800	208-230/460	56	N320★	56T17W5340	10:1	\$458	F3	77.0	2.8-2.8/1.4	30	10.81	V
<b>1</b>	1800	208-230/460	56	N309	56T17V5346	1000:1	\$481	F3	80.0	3.2-3.2/1.6	35	11.18	N
	1800	208-230/460	143T	<b>N310★</b>	143TTVR5329	1000:1	\$525	F3	82.5	3.2-3.2/1.6	35	11.62	N
<b>1 1/2</b>	1800	208-230/460	145T	<b>N321★</b>	145TTWR4029	10:1	\$527	F3	84.0	4.2-4.2/2.1	59	13.12	V
<b>2</b>	1800	208-230/460	145T	<b>N312★</b>	145TTWR4027	10:1	\$655	F3	84.0	6.5-6.2/3.1	49	13.25	V
<b>3</b>	1800	208-230/460	56HZ	N313★	56T17W5328	10:1	\$661	F3	82.5	8.6-8.6/4.3	52	14.25	d,V,Z,5,17
	1800	208-230/460	182T	<b>N314★</b>	182TTWR4027	10:1	\$866	F3	87.5	8.2-8.2/4.1	75	13.97	d,V
	1800	208-230/460	182T	<b>N1314★</b>	182TTWW4027	10:1	\$866	F3	87.5	8.2-8.2/4.1	75	13.97	V
<b>5</b>	3600	208-230/460	184T	<b>N315</b>	184TTWR4004	10:1	\$990	F3	87.5	13.0-13.0/6.5	81	14.46	V
	1800	208-230/460	184T	<b>N316★</b>	184TTWR4027	10:1	\$990	F3	87.5	13.0-13.0/6.5	79	14.97	V
<b>7 1/2</b>	3600	208-230/460	184T	<b>N317★</b>	184TTWR4003	10:1	\$1,236	F3	88.5	17.6-16.8/8.4	87	15.96	V
	1800	208-230/460	213T	<b>N318★</b>	213TTWR4027	10:1	\$1,236	F3	89.5	20.4-20.4/10.2	149	17.71	V
<b>10</b>	1800	208-230/460	215T	<b>N319★</b>	215TTWR4027	10:1	\$1,479	F3	89.5	26.0-26.0/13.0	165	18.71	d,V

★ Stock Model

\* Requires nameplate modification

Catalog numbers (Cat No.) highlighted in bold blue have efficiency levels that meet or exceed U.S. EPAAct and/or NRCan Canadian standards.

## C-Face

HP	RPM	VOLTS	FRAME	CAT. NO.	MODEL NO.	CT SPEED RANGE*	LIST PRICE	MULT. SYMB.	NOM. EFF.	F.L. AMPS	APPROX. WGT. LBS.	"C" DIM.	FOOT NOTES
<b>1/4</b>	1800	208-230/460	56C	N640★	56T17V5326	1000:1	\$408	F3	68.0	1.1-1.1/55	50	9.56	d,N
<b>1/3</b>	1800	208-230/460	56C	N641★	56T17V5327	1000:1	\$433	F3	72.0	1.3-1.3/65	22	9.56	d,N
<b>1/2</b>	1800	208-230/460	56C	N642★	56T17V5328	1000:1	\$447	F3	78.5	1.8-1.8/9	26	10.06	N
<b>3/4</b>	3600	208-230/460	56C	N643	56T34V5301	1000:1	\$451	F3	75.5	2.6-2.4/1.2	50	10.06	N
	1800	208-230/460	56C	<b>N644★</b>	56T17V5329	1000:1	\$517	F3	80.0	2.5-2.5/1.25	28	10.56	N
<b>1</b>	3600	208-230/460	56C	N645★	56T34V5302	1000:1	\$527	F3	78.5	2.8-2.6/1.3	60	11.56	d,N
	1800	208-230/460	56C	N646★	56T17V5330	1000:1	\$539	F3	80.0	3.2-3.2/1.6	50	11.56	N
	1800	208-230/460	143TC	N647★	143TTVR5326	1000:1	\$539	F3	80.0	3.2-3.2/1.6	38	11.75	N
<b>1 1/2</b>	3600	208-230/460	56C	N648	56T34V5303	1000:1	\$558	F3	80.0	4.2-3.8/1.9	43	12.56	N
	1800	208-230/460	56C	N649★	56T17V5331	1000:1	\$562	F3	84.0	4.2-4.2/2.1	35	13.06	N
	1800	208-230/460	143TC	<b>N650★</b>	143TTVR5327	1000:1	\$562	F3	84.0	4.2-4.2/2.1	50	13.25	N
<b>2</b>	3600	208-230/460	56C	N651	56T34V5304	1000:1	\$639	F3	82.5	5.6-5.0/2.5	34	13.06	N
	3600	208-230/460	145TC	<b>N652★</b>	145TTVR5301	1000:1	\$639	F3	82.5	5.6-5.0/2.5	42	13.25	d,N
	1800	208-230/460	56C	N653★	56T17W5326	10:1	\$655	F3	81.5	6.2-6.2/3.1	39	12.69	V
	1800	208-230/460	145TC	<b>N654★</b>	145TTWR5326	10:1	\$655	F3	81.5	6.2-6.2/3.1	42	12.75	V
<b>3</b>	3600	208-230/460	145TC	N655	145TTWR5301	10:1	\$780	F3	80.0	8.4-7.6/3.8	36	13.25	V
	1800	208-230/460	182TC	<b>N656★</b>	182TTWR7026	10:1	\$858	F3	82.5	9.0-9.0/4.5	64	14.47	V
<b>5</b>	3600	208-230/460	184TC	<b>N657★</b>	184TTWR7001	10:1	\$1,088	F3	85.5	13.6-12.4/6.2	90	14.47	d,V
	1800	208-230/460	184TC	<b>N658★</b>	184TTWR7026	10:1	\$972	F3	82.5	14.0-13.2/6.6	76	14.47	V
<b>7 1/2</b>	3600	208-230/460	213TC	N659	213TTWR7001	10:1	\$1,349	F3	86.5	19.6-18.4/9.2	85	15.47	V
	1800	208-230/460	213TC	<b>N660★</b>	213TTWR7026	10:1	\$1,235	F3	89.5	24.0-22.0/11.0	175	17.71	V
<b>10</b>	1800	208-230/460	215TC	<b>N661★</b>	215TTWR7026	10:1	\$1,402	F3	89.5	29.0-28.0/14.0	150	18.71	V

Footnotes:

★ Stock Model

\* Requires nameplate modification

d Will become build-up item when current stock is gone

N Totally Enclosed, Non-Ventilated

V Suitable for 10:1 CT 60 minute duty, otherwise 2:1 CT

Z 56HZ with 7/8" shaft dia., 3-1/2" shaft height, and slotted 56 frame base

5 56H, 143T, and 145T combination base with 12 mounting holes

17 1.0 Service Factor

# PowerWash™ XT Washdown Duty, Three Phase

White Epoxy, Totally Enclosed

C-Face with Rigid Base

Same features as shown on page 74

HP	RPM	VOLTS	FRAME	CAT. NO.	MODEL NO.	CT SPEED RANGE*	LIST PRICE	MULT. SYMB.	NOM. EFF.	F.L. AMPS	APPROX. WGT. LBS.	"C" DIM.	FOOT NOTES
<b>1/4</b>	1800	208-230/460	56C	N564	56T17V5332	1000:1	\$410	F3	68.0	1.1-1.1/55	20	10.08	N
	1800	575	56C	N620 ★	56T17W5333	10:1	\$410	F3	68.0	0.44	20	10.69	d,V
<b>1/3</b>	1800	208-230/460	56C	N565	56T17V5334	1000:1	\$434	F3	72.0	1.3/65	23	10.08	N
	1800	208-230/460	56C	N628	56T17W5334	10:1	\$450	F3	68.0	1.7-1.7/85	23	10.69	
	1800	575	56C	N621	56T17W5335	10:1	\$450	F3	68.0	0.68	23	10.69	V
<b>1/2</b>	3600	208-230/460	56C	N566 ★	56T34V5305	1000:1	\$409	F3	76.0	1.7-1.6/8	30	10.58	N
	1800	208-230/460	56C	N567 ★	56T17V5336	1000:1	\$458	F3	78.5	1.8-1.8/9	26	10.06	N
	1800	575	56C	N622 ★	56T17V5337	1000:1	\$458	F3	78.5	0.80	25	10.08	d,N
	1200	208-230/460	56C	N568	56T11V5376	1000:1	\$572	F3	77.0	2.3-2.3/1.15	23	11.56	N
<b>3/4</b>	3600	208-230/460	56C	N569	56T34V5306	1000:1	\$449	F3	75.5	2.6-2.4/1.2	24	10.08	N
	1800	208-230/460	56C	N599 ★	56T17V5338	1000:1	\$530	F3	80.0	2.5-2.5/1.25	33	10.56	N
	1800	575	56C	N623	56T17W5339	10:1	\$530	F3	77.0	1.12	27	11.19V	
	1200	208-230/460	56C	N600	56T11V5377	1000:1	\$622	F3	78.5	3.0-3.0/1.5	25	13.06	N,5
<b>1</b>	3600	208-230/460	56C	N601 ★	56T34V5307	1000:1	\$525	F3	78.5	2.8-2.6/1.3	35	11.56	N
	1800	208-230/460	56C	N602 ★	56T17V5340	1000:1	\$553	F3	80.0	3.2-3.2/1.6	36	11.58	N
	1800	575	56C	N627	56T17W5341	10:1	\$553	F3	77.0	1.5	30	11.69	V
	1800	208-230/460	143TC	N626 ★	143TTWR4028	10:1	\$553	F3	82.5	3.2-3.1/1.55	38	13.25	V
	1200	208-230/460	56HC	N604	56T11W5377	10:1	\$667	F3	78.5	4.0-4.0/2.0	26	13.06	5,V
<b>1 1/2</b>	3600	208-230/460	56C	N605 ★	56T34V5308	1000:1	\$580	F3	80.0	4.2-3.8/1.9	44	12.56	N
	1800	208-230/460	56C	N606 ★	56T17V5342	1000:1	\$577	F3	84.0	4.2-4.2/2.1	34	13.06	N
	1800	208-230/460	145TC	N607 ★	145TTVR5326	1000:1	\$577	F3	84.0	4.2-4.2/2.1	48	13.12	N
	1200	208-230/460	56HC	N608 ★	56T11W5378	10:1	\$704	F3	77.0	5.7-5.7/2.85	31	14.18	5,V
<b>2</b>	3600	208-230/460	56HC	N609 ★	56T34V5309	1000:1	\$644	F3	82.5	5.6-5.0/2.5	48	13.06	d,N,V,5,17
	3600	208-230/460	145TC	N610 ★	145TTVR5302	10:1	\$714	F3	84.0	5.6-5.0/2.5	47	13.12	N
	1800	208-230/460	56C	N611 ★	56T17W5327	10:1	\$662	F3	81.5	6.2-6.2/3.1	39	12.69	V
	1800	208-230/460	145TC	N612 ★	145TTWR4026	10:1	\$714	F3	84.0	6.0-5.6/2.8	50	13.75	V
<b>3</b>	3600	208-230/460	145TC	N613 ★	145TTWR4001	10:1	\$842	F3	85.5	8.4-7.6/3.8	45	13.75	V
	1800	208-230/460	182TC	N614 ★	182TTWR4026	10:1	\$939	F3	87.5	8.2-8.2/4.1	77	14.47	d,V
	1800	208-230/460	182TC	N1614 ★	182TTWW4026	10:1	\$939	F3	87.5	8.2-8.2/4.1	77	14.47	V
<b>5</b>	3600	208-230/460	184TC	N615 ★	184TTWR4001	10:1	\$1,175	F3	87.5	12.8-12.0/6.0	84	14.47	V
	1800	208-230/460	184TC	N616 ★	184TTWR4026	10:1	\$1,061	F3	87.5	13.8-13.0/6.5	90	14.97	d,V
	1800	208-230/460	184TC	N1616 ★	184TTWW4026	10:1	\$1,061	F3	87.5	13.8-13.0/6.5	90	14.97	V
<b>7 1/2</b>	3600	208-230/460	213TC	N617	213TTWR4002	10:1	\$1,459	F3	88.5	17.6-16.8/8.4	120	17.47	V
	1800	208-230/460	213TC	N618 ★	213TTWR4026	10:1	\$1,345	F3	89.5	24.0-22.0/11.0	145	17.71	V
<b>10</b>	1800	208-230/460	215TC	N619 ★	215TTWR4026	10:1	\$1,529	F3	89.5	29.0-28.0/14.0	145	18.71	V

★ Stock Model

\* Requires nameplate modification

WASHDOWN DUTY

**Footnotes:**

- d Will become build-up item when current stock is gone
- N Totally Enclosed, Non-Ventilated
- V Suitable for 10:1 CT 60 minute duty, otherwise 2:1 CT

- 5 56H, 143T, and 145T combination base with 12 mounting holes
- 17 1.0 Service Factor

# PowerWash™ SXT Washdown Duty, Three Phase

All Stainless Steel, Totally Enclosed



**Applications:** For use in pharmaceutical and food processing industries where maximum sanitation requirements are specified. Suitable for use in severe chemical processing industries where nitric acid and caustic lye may be present.

- Features:**
- Suitable for use on VFD 10:1 Variable torque, 10:1 (TEFC) or 1000:1 (TENV) Constant Torque
  - MAX GUARD® Class F insulation system
  - Double sealed ball bearings
  - 1.15 Service Factor on sinewave, 1.0 Service Factor on IGBT power
  - 303 stainless steel shaft with springloaded contact seals in each end. (Drive end only on TENV)
  - 300 Series Stainless steel external construction: frame, endshields, conduit box, box cover, base and hardware for superior corrosion resistance
  - Internal corrosion resistant coatings on frame, base, endshields, rotor and stator
  - 100% Paint-free construction
  - One way condensation drains in each endshield and conduit box for all angle mounting
  - Nitrile Buna - N gaskets and seals on conduit box, through bolts and endshields
  - Rated 60/50 hertz, 190/380 volt at next lower horsepower
  - Nameplate information laser etched on frame
  - UL Recognized and CSA Certified, CE Marked



WASHDOWN DUTY

## C-Face

HP	RPM	VOLTS	FRAME	CAT. NO.	MODEL NO.	LIST PRICE	MULT. SYMB.	NOM. EFF.	F.L. AMPS	APPROX. WGT. LBS.	"C" DIM.	FOOT NOTES
<b>1/3</b>	1800	208-230/460	56C	N430 ★	56T17VD5329	\$479	F3	78.5	1.2-1.3/65	30	9.40	DS,N
<b>1/2</b>	1800	208-230/460	56C	N431 ★	56T17VD5330	\$491	F3	81.5	1.5-1.6/1.8	32	9.40	DS,N
<b>3/4</b>	1800	208-230/460	56C	N432 ★	56T17VD5331	\$571	F3	82.5	2.4-2.3/1.15	30	9.40	DS,N
<b>1</b>	1800	208-230/460	56C	N433 ★	56T17WD5330	\$595	F3	82.5	3.2-3/1.5	39	13.40	DS
	1800	208-230/460	143TC	N434 ★	143TTWD5527	\$613	F3	82.5	3.2-3/1.5	40	13.87	DS
<b>1 1/2</b>	1800	208-230/460	56C	N435 ★	56T17WD5331	\$621	F3	84.0	5.8-5.4/4.4	42	13.40	DS
	<b>2</b>	1800	208-230/460	56C	N437 ★	56T17WD5332	\$709	F3	84.0	6.2-5.8/2.9	49	13.40
		1800	208-230/460	145TC	N438 ★	145TTWD5528	\$729	F3	84.0	6.2-5.8/2.9	50	13.87

★ Stock Model

Catalog numbers (Cat No.) highlighted in bold blue have efficiency levels that meet or exceed U.S. EPCa and/or NRCa Canadian standards.

## C-Face with Rigid Base

HP	RPM	VOLTS	FRAME	CAT. NO.	MODEL NO.	LIST PRICE	MULT. SYMB.	NOM. EFF.	F.L. AMPS	APPROX. WGT. LBS.	"C" DIM.	FOOT NOTES
<b>1/3</b>	3600	208-230/460	56C	N450 ★	56T34VD5301	\$431	F3	74.0	1.1-1.0/0.5	20	9.40	DS,N,d
	1800	208-230/460	56C	N410	56T17VD5326	\$482	F3	78.5	1.2-1.3/65	30	9.40	DS,N
<b>1/2</b>	3600	208-230/460	56C	N451	56T34VD5302	\$441	F3	77.0	1.6-1.5/75	28	9.40	DS,N
	1800	208-230/460	56C	N411 ★	56T17VD5328	\$496	F3	81.5	1.5-1.6/8	34	9.40	DS,N
<b>3/4</b>	3600	208-230/460	56C	N452	56T34VD5303	\$484	F3	78.5	2.2-2.0/1.0	29	9.40	d,DS,N
	1800	208-230/460	56C	N412 ★	56T17VD5327	\$573	F3	82.5	2.4-2.3/1.15	40	12.06	DS,N
<b>1</b>	3600	208-230/460	56C	N453 ★	56T34WD5301	\$569	F3	80.0	2.9-2.6/1.3	39	13.40	d,DS,5
	3600	208-230/460	143TC	N454 ★	143TTWD4001	\$611	F3	80.0	2.9-2.6/1.3	39	13.87	d,DS
	1800	208-230/460	56C	N413 ★	56T17WD5326	\$597	F3	82.5	3.2-3.0/1.5	40	12.13	DS,5
	1800	208-230/460	143TC	N414 ★	143TTWD4026	\$642	F3	82.5	3.2-3.0/1.5	41	13.69	DS
<b>1 1/2</b>	3600	208-230/460	56C	N455 ★	56T34WD5302	\$627	F3	82.5	4.2-3.8/1.9	45	13.40	DS,5
	3600	208-230/460	143TC	N456 ★	143TTWD4002	\$675	F3	82.5	4.2-3.8/1.9	45	13.87	DS
	1800	208-230/460	56C	N415 ★	56T17WD5329	\$623	F3	84.0	5.0-4.8/2.4	40	14.25	DS,5
<b>2</b>	3600	208-230/460	56C	N457 ★	56T34WD5303	\$695	F3	84.0	5.6-5.0/2.5	47	13.40	DS,5
	3600	208-230/460	145TC	N458 ★	145TTWD4001	\$809	F3	84.0	5.6-5.0/2.5	47	13.87	d,DS
	1800	208-230/460	56C	N417 ★	56T17WD5328	\$711	F3	84.0	6.2-5.8/2.9	46	14.25	DS,5
	1800	208-230/460	145TC	N418 ★	145TTWD4029	\$793	F3	84.0	6.2-5.8/2.9	49	13.69	DS

★ Stock Model

Catalog numbers (Cat No.) highlighted in bold blue have efficiency levels that meet or exceed U.S. EPCa and/or NRCa Canadian standards.

### Footnotes:

d Will become build-up item when current stock is gone  
 DS Sourced

N Totally Enclosed, Non-Ventilated  
 5 56H, 143T, and 145T combination base with 12 mounting holes

# PowerWash™ SXT-Plus Washdown Duty, Three Phase

All Stainless Steel, Totally Enclosed, C-Face with Rigid Base

**Applications:** For use in pharmaceutical and food processing industries where maximum sanitation requirements are specified. Suitable for use in severe chemical processing industries where nitric acid and caustic lye may be present.

- Features:**
- Suitable for use on VFD, 10:1 Variable torque, 10:1 (TEFC) or 1000:1 (TENV) Constant Torque, 1.0 Service Factor
  - MAX GUARD® Class F insulation system
  - 300 Series Stainless steel external construction: frame, endshields, shaft, conduit box, box cover, base and hardware for superior corrosion resistance
  - Double sealed ball bearings with moisture resistant, high temperature grease
  - 1.15 Service Factor on sinewave, 1.0 Service Factor on IGBT power
  - Fully coated interior to guard against moisture and corrosion
  - 100% Paint-free construction
  - Viton® o-rings, shaft seals, and gaskets for superior sealing against chemicals
  - Hydrophobic breather in OP endshield and conduit box equalize air pressure
  - Nameplate information laser etched on frame
  - BISSC Certified for baking industry
  - UL Recognized and CSA Certified, CE Marked



WASHDOWN DUTY

HP	RPM	VOLTS	FRAME	CAT. NO.	MODEL NO.	LIST PRICE	MULT. SYMB.	NOM. EFF.	F.L. AMPS	APPROX. WGT. LBS.	"C" DIM.	FOOT NOTES
<b>1/2</b>	1800	208-230/460	56HC	N400★	56T17V5347	<b>\$904</b>	F3	78.0	1.6-1.6/8	34	12.54	d,N,5
<b>3/4</b>	1800	208-230/460	56HC	N401★	56T17V5348	<b>\$938</b>	F3	83.6	2.4-2.3/1.15	40	11.71	d,N,5
<b>1</b>	1800	208-230/460	56HC	N402★	56T17V5349	<b>\$960</b>	F3	82.0	2.4-2.3/1.15	48	13.54	d,N,5
	1800	208-230/460	143TC	N403	143TTVD5326	<b>\$960</b>	F3	82.0	3.1-3.0/1.5	46	13.61	N,5
<b>1 1/2</b>	1800	208-230/460	145TC	<b>N404</b>	145TTWD4026	<b>\$960</b>	F3	84.0	4.5-4.4/2.2	46	14.25	
<b>2</b>	1800	208-230/460	145TC	<b>N405</b> ★	145TTWD4027	<b>\$1,193</b>	F3	84.0	6.0-6.0/3.0	47	14.25	
<b>3</b>	1800	208-230/460	182TC	<b>N406</b> ★	182TTWD14031	<b>\$1,433</b>	F3	87.5	8.8-8.2/4.1	82	14.87	
<b>5</b>	1800	208-230/460	184TC	<b>N407</b> ★	184TTWD14031	<b>\$1,634</b>	F3	87.5	13.8-13.0/6.5	93	15.37	d
<b>7 1/2</b>	1800	208-230/460	213TC	<b>N408</b> ★	213TTWD14031	<b>\$2,445</b>	F3	89.5	20.4-22.0/11.0	153	18.69	d
<b>10</b>	1800	208-230/460	215TC	<b>N409</b> ★	215TTWD14031	<b>\$2,518</b>	F3	89.5	29.0-28.0/14.0	170	18.69	

★ Stock Model

Catalog numbers (Cat No.) highlighted in bold blue have efficiency levels that meet or exceed U.S. EPA and/or NRC Canadian standards.

## PowerWash™ Coupler Brakes

PowerWash™ coupler brakes are specifically designed for use with PowerWash™ Washdown Duty motors. Rated for NEMA 4X/IP55, these brakes are suitable for applications with high moisture or pressure washdown. Painted with a special white epoxy food-safe paint, these brakes are **BISSC Certified**.

ENCLOSURE NEMA 4X/IP55	CAT. NO.	KIT NO.	LIST PRICE	MULT. SYMB.
<b>3 ft. lb.</b>	A909★	KIT 909	<b>\$674</b>	S4
<b>6 ft. lb.</b>	A910★	KIT 910	<b>\$729</b>	S4
<b>10 ft. lb.</b>	A911★	KIT 911	<b>\$801</b>	S4

★ Stock Model

**Footnotes:**

- d Will become build-up item when current stock is gone
- N Totally Enclosed, Non-Ventilated
- 5 56H, 143T, and 145T combination base with 12 mounting holes