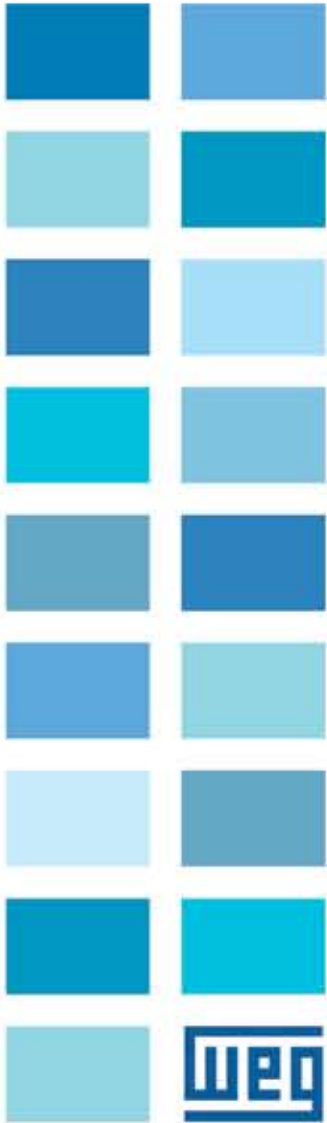


Rolled Steel Motors



RS507AB





Rolled Steel Line General Purpose Motors



Standard Features

- Frames (143/5T up to 254/6T)
- Voltages: 208-230/460V
- Degree of Protection: IP55
- V-ring seal
- Ball bearings (ZZ up to 256T)
- Plastic fan
- Class "F" insulation
- Service factor: 1.15
- Color: Munsell N1 (Black)

Optional Features

- Voltage: 575V and others
- Degree of Protection: IP56
- Lip seal, Oil seal
- Class "H" insulation
- * More options available upon request

Applications

- Pumps
- Compressors
- Fans
- Machine Tools
- Other General Purpose

Rolled Steel – General Purpose Motors

TEFC – High Efficiency – Three Phase

FAN COVER Made of steel, the fan cover offers superior mechanical rigidity, corrosion resistance and extended lifetime.

FAN

WEG has designed fans and fan covers to produce one of the quietest electric motors in the market. Fans are fully efficient cooling ensuring low motor temperature rise, this minimizes winding losses, thus increasing motor efficiency.

WEG uses the Finite Element Analysis (FEA) software on its motor parts (endshield, frames, T-boxes). FEA is used to detect irregularities and thermal simulations of mechanical components. This system provides a unified product development environment offering a tight integration across a wide range of design processes ranging from geometry modeling and CAD editing, meshing and pre-processing, advanced analysis (structural, thermal, electromagnetics, etc.) and robust design optimization.

BEARINGS

WEG motors are fitted with the highest quality bearings selected among the best manufacturers in the world and designed to ensure long life to the motor even under heavy working conditions

FRAME Made of cold laminated steel plate with an anti-corrosive treatment.

WINDING

The wire are supplied with patented WISE (WEG Insulation System Evolution), which allows three times longer motor lifetime designed to work in environments with excess moisture and are suitable for Variable Frequency Drive application.

DRAIN PLUGS Provided with plastic drain plug allowing drainage of condensed water.

ENDSHIELDS

Made of cast iron, provided with external fins for better heat dissipation, thus increasing bearing life.

SEALS WEG motors are fitted with V-ring seals (Oil seals and Lip seals as optional) to provide the best possible protection in dusty and high moisture environments.

STATOR

Composed of highest quality steel laminations.

ROTOR

Composed of magnetic laminations with low electrical losses. Pure alloy aluminum bars form the cage and are cast under pressure into one piece.

SHAFT WEG uses SAE/AISI 1040/45 steel as standard, which provides high mechanical resistance, preventing flexing under load and minimizes fatigue which extends lifetime performance. Specially designed to withstand torques caused during motor acceleration and deceleration (brake). Size is larger than standard motor and upon special design, shaft can have second end.





Rolled Steel – W21 High Efficiency – General Purpose Motors Three Phase – Foot Mount



HP	RPM	NEMA FRAME	Catalog Number	List Price	Mult. Sym	Approx. Ship. Weight Lbs.	FL Amps 460V	FL Eff. %	C' Dimension (in.)	Voltage	Notes
1	1800	143T	00118EP3ERS143T	377	RS	39	1.45	80.0	14.095	208-230/460V	RS
	1200	145T	00112EP3ERS145T	463	RS	45	1.83	80.0	14.095	208-230/460V	RS
1.5	3600	143T	00156EP3ERS143T	395	RS	40	1.95	82.5	14.095	208-230/460V	RS
	1800	145T	00158EP3ERS145T	382	RS	43	2.25	81.0	14.095	208-230/460V	RS
2	1200	182T	00152EP3ERS182T	576	RS	74	2.37	85.5	16.404	208-230/460V	RS
	3600	145T	00236EP3ERS145T	450	RS	44	2.60	84.0	14.095	208-230/460V	RS
3	1800	145T	00218EP3ERS145T	426	RS	50	2.85	82.0	14.095	208-230/460V	RS
	1200	184T	00212EP3ERS184T	626	RS	91	3.20	86.5	16.404	208-230/460V	RS
5	3600	W182/4T	00336EP3ERS182T	540	RS	61	3.67	85.5	17.719	208-230/460V	RS
	1800	W182/4T	00318EP3ERS182T	483	RS	59	4.15	87.5	17.719	208-230/460V	RS
7.5	1200	213T	00312EP3ERS213T	817	RS	104	4.26	87.5	20.257	208-230/460V	RS
	3600	W182/4T	00536EP3ERS184T	660	RS	64	6.10	87.5	17.719	208-230/460V	RS
10	1800	W182/4T	00518EP3ERS184T	572	RS	68	6.90	87.5	17.719	208-230/460V	RS
	1200	215T	00512EP3ERS215T	1,049	RS	145	7.08	87.5	20.257	208-230/460V	RS
15	3600	213T	00736EP3ERS213T	901	RS	112	9.00	88.5	20.257	208-230/460V	RS
	1800	213T	00718EP3ERS213T	757	RS	120	9.64	89.5	20.257	208-230/460V	RS
20	1200	254T	00712EP3ERS254T	1,512	RS	190	9.52	89.5	22.956	208-230/460V	RS
	3600	215T	01036EP3ERS215T	1,049	RS	136	11.8	89.5	20.257	208-230/460V	RS
25	1800	215T	01018EP3ERS215T	901	RS	134	12.8	89.5	20.257	208-230/460V	RS
	1200	256T	01012EP3ERS256T	1,740	RS	206	13.3	89.5	22.956	208-230/460V	RS
30	3600	W254/6T	01536EP3ERS254T	1,503	RS	162	17.0	90.2	21.500	208-230/460V	RS
	1800	W254/6T	01518EP3ERS254T	1,371	RS	178	18.5	91.0	21.500	208-230/460V	RS
40	3600	W254/6T	02036EP3ERS256T	1,821	RS	167	23.7	90.2	22.956	208-230/460V	RS
	1800	W254/6T	02018EP3ERS256T	1,682	RS	182	24.4	91.0	24.925	208-230/460V	RS

Rolled Steel – W21 High Efficiency – General Purpose Motors Three Phase Motors – Foot Mount – C-Flange

HP	RPM	NEMA FRAME	Catalog Number	List Price	Mult. Sym	Approx. Ship. Weight Lbs.	FL Amps 460V	FL Eff. %	C' Dimension (in.)	Voltage	Notes
1	1800	143TC	00118EP3ERS143TC	403	RS	39	1.45	80.0	14.095	208-230/460V	RS
	1200	145TC	00112EP3ERS145TC	489	RS	45	1.83	80.0	14.095	208-230/460V	RS
1.5	3600	143TC	00156EP3ERS143TC	420	RS	40	1.95	82.5	14.095	208-230/460V	RS
	1800	145TC	00158EP3ERS145TC	408	RS	43	2.25	81.0	14.095	208-230/460V	RS
2	1200	182TC	00152EP3ERS182TC	611	RS	74	2.37	85.5	16.404	208-230/460V	RS
	3600	145TC	00236EP3ERS145TC	475	RS	44	2.60	84.0	14.095	208-230/460V	RS
3	1800	145TC	00218EP3ERS145TC	451	RS	50	2.85	82.0	14.095	208-230/460V	RS
	1200	184TC	00212EP3ERS184TC	661	RS	91	3.20	86.5	16.404	208-230/460V	RS
5	3600	W182/4TC	00336EP3ERS182TC	575	RS	61	3.67	85.5	17.719	208-230/460V	RS
	1800	W182/4TC	00318EP3ERS182TC	518	RS	59	4.15	87.5	17.719	208-230/460V	RS
7.5	1200	213TC	00312EP3ERS213TC	865	RS	104	4.26	87.5	20.257	208-230/460V	RS
	3600	W182/4TC	00536EP3ERS184TC	695	RS	64	6.10	87.5	17.719	208-230/460V	RS
10	1800	W182/4TC	00518EP3ERS184TC	607	RS	68	6.90	87.5	17.719	208-230/460V	RS
	1200	215TC	00512EP3ERS215TC	1,096	RS	145	7.08	87.5	20.257	208-230/460V	RS
15	3600	213TC	00736EP3ERS213TC	948	RS	112	9.00	88.5	20.257	208-230/460V	RS
	1800	213TC	00718EP3ERS213TC	804	RS	120	9.64	89.5	20.257	208-230/460V	RS
20	1200	254TC	00712EP3ERS254TC	1,576	RS	190	9.52	89.5	22.956	208-230/460V	RS
	3600	215TC	01036EP3ERS215TC	1,096	RS	136	11.8	89.5	20.257	208-230/460V	RS
25	1800	215TC	01018EP3ERS215TC	948	RS	134	12.8	89.5	20.257	208-230/460V	RS
	1200	256TC	01012EP3ERS256TC	1,803	RS	206	13.3	89.5	22.956	208-230/460V	RS
30	3600	W254TC	01536EP3ERS254TC	1,566	RS	162	17.0	90.2	21.500	208-230/460V	RS
	1800	W254TC	01518EP3ERS254TC	1,434	RS	178	18.5	91.0	21.500	208-230/460V	RS
40	3600	W256TC	02036EP3ERS256TC	1,884	RS	167	23.7	90.2	22.956	208-230/460V	RS
	1800	W256TC	02018EP3ERS256TC	1,745	RS	182	24.9	91.0	24.925	208-230/460V	RS



Rolled Steel – W21 High Efficiency – General Purpose Motors Three Phase – Footless with C-Flange



HP	RPM	NEMA FRAME	Catalog Number	List Price	Mult. Sym	Approx. Ship. Weight Lbs.	FL Amps 460V	FL Eff. %	C' Dimension (in.)	Voltage	Notes
1	1800	143TC	00118EP3ERSR143TC	403	RS	39	1.47	80.0	14.095	208-230/460V	RS
	1200	145TC	00112EP3ERSR145TC	489	RS	45	1.70	80.0	14.095	208-230/460V	RS
1.5	3600	143TC	00156EP3ERSR143TC	420	RS	40	1.99	82.5	14.095	208-230/460V	RS
	1800	145TC	00158EP3ERSR145TC	408	RS	43	2.05	81.0	14.095	208-230/460V	RS
2	1200	182TC	00152EP3ERSR182TC	611	RS	74	2.37	85.5	16.404	208-230/460V	RS
	3600	145TC	00236EP3ERSR145TC	475	RS	44	2.60	84.0	14.095	208-230/460V	RS
	1800	145TC	00218EP3ERSR145TC	451	RS	50	2.70	82.0	14.095	208-230/460V	RS
3	1200	184TC	00212EP3ERSR184TC	661	RS	91	3.20	86.5	16.404	208-230/460V	RS
	3600	W182/4TC	00336EP3ERSR182TC	575	RS	61	3.67	85.5	17.719	208-230/460V	RS
	1800	W182/4TC	00318EP3ERSR182TC	518	RS	59	4.15	87.5	17.719	208-230/460V	RS
5	1200	213TC	00312EP3ERSR213TC	865	RS	104	4.26	87.5	20.257	208-230/460V	RS
	3600	W182/4TC	00536EP3ERSR184TC	695	RS	64	6.10	87.5	17.719	208-230/460V	RS
	1800	W182/4TC	00518EP3ERSR184TC	607	RS	68	6.90	87.5	17.719	208-230/460V	RS
7.5	1200	215TC	00512EP3ERSR215TC	1,096	RS	145	7.08	87.5	20.257	208-230/460V	RS
	3600	213TC	00736EP3ERSR213TC	948	RS	112	9.00	88.5	20.257	208-230/460V	RS
10	1800	213TC	00718EP3ERSR213TC	804	RS	120	9.64	89.5	20.257	208-230/460V	RS
	3600	215TC	01036EP3ERSR215TC	1,096	RS	136	11.8	89.5	20.257	208-230/460V	RS
15	1800	215TC	01018EP3ERSR215TC	948	RS	134	12.8	89.5	20.257	208-230/460V	RS
	3600	W254TC	01536EP3ERSR254TC	1,566	RS	162	17.0	90.2	21.500	208-230/460V	RS
20	1800	W254TC	01518EP3ERSR254TC	1,434	RS	178	18.5	91.0	21.500	208-230/460V	RS
	3600	W256TC	02036EP3ERSR256TC	1,884	RS	167	23.3	90.2	22.956	208-230/460V	RS
	1800	W256TC	02018EP3ERSR256TC	1,745	RS	182	24.4	91.0	24.925	208-230/460V	RS

Rolled Steel – General Purpose Motors – Three Phase NEMA Premium Efficiency – TEFC IP55 – Foot Mount

HP	RPM	NEMA FRAME	Catalog Number	List Price	Mult. Sym	Approx. Ship. Weight Lbs.	FL Amps 460V	FL Eff. %	C' Dimension (in.)	Voltage	Notes
1	1800	143T	00118ET3ERS143T	483	RSP	36	1.45	85.5	14.095	208-230/460V	RS
1.5	3600	143T	00156ET3ERS143T	498	RSP	38	1.95	84.0	14.095	208-230/460V	RS
	1800	145T	00158ET3ERS145T	505	RSP	39	2.25	86.5	14.095	208-230/460V	RS
2	1200	182T	00152ET3ERS182T	691	RSP	74	2.39	87.5	16.404	208-230/460V	RS
	3600	145T	00236ET3ERS145T	541	RSP	42	2.50	85.5	14.095	208-230/460V	RS
	1800	145T	00218ET3ERS145T	561	RSP	46	2.85	86.5	14.095	208-230/460V	RS
3	1200	184T	00212ET3ERS184T	751	RSP	91	3.22	88.5	16.404	208-230/460V	RS
	3600	182T	00336ET3ERS182T	700	RSP	80	3.68	87.5	16.404	208-230/460V	RS
	1800	182T	00318ET3ERS182T	607	RSP	74	3.91	89.5	16.404	208-230/460V	RS
5	1200	213T	00312ET3ERS213T	1,035	RSP	122	4.41	89.5	20.257	208-230/460V	RS
	3600	184T	00536ET3ERS184T	800	RSP	93	5.96	89.5	16.404	208-230/460V	RS
	1800	184T	00518ET3ERS184T	707	RSP	92	6.40	89.5	16.404	208-230/460V	RS
7.5	1200	215T	00512ET3ERS215T	1,221	RSP	146	6.83	89.5	20.257	208-230/460V	RS
	3600	213T	00736ET3ERS213T	1,032	RSP	125	8.63	91.0	20.257	208-230/460V	RS
	1800	213T	00718ET3ERS213T	998	RSP	139	9.29	91.7	20.257	208-230/460V	RS
10	1200	254T	00712ET3ERS254T	1,894	RSP	237	9.73	91.0	24.925	208-230/460V	RS
	3600	215T	01036ET3ERS215T	1,221	RSP	158	11.5	91.7	20.257	208-230/460V	RS
	1800	215T	01018ET3ERS215T	1,168	RSP	153	12.7	91.7	20.257	208-230/460V	RS
15	1200	256T	01012ET3ERS256T	2,198	RSP	260	13.3	91.0	24.925	208-230/460V	RS
	3600	254T	01536ET3ERS254T	1,673	RSP	214	16.9	91.7	22.956	208-230/460V	RS
20	1800	254T	01518ET3ERS254T	1,695	RSP	238	18.0	92.4	24.925	208-230/460V	RS
	3600	256T	02036ET3ERS256T	2,185	RSP	237	22.9	92.4	24.925	208-230/460V	RS
	1800	256T	02018ET3ERS256T	2,019	RSP	259	24.4	93.0	24.925	208-230/460V	RS



Rolled Steel – NEMA Premium Efficiency – General Purpose Motors Three Phase – TEFC IP55 – C-Flange

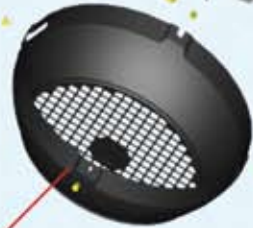


HP	RPM	NEMA FRAME	Catalog Number	List Price	Mult. Sym	Approx. Ship. Weight Lbs.	FL Amps 460V	FL Eff. %	C' Dimension (in.)	Voltage	Notes
1	1800	143TC	00118ET3ERS143TC	509	RSP	36	1.45	85.5	14.095	208-230/460V	RS
	3600	143TC	00156ET3ERS143TC	523	RSP	38	1.95	84.0	14.095	208-230/460V	RS
1.5	1800	145TC	00158ET3ERS145TC	531	RSP	39	2.25	86.5	14.095	208-230/460V	RS
	1200	182TC	00152ET3ERS182TC	726	RSP	74	2.39	87.5	16.404	208-230/460V	RS
2	3600	145TC	00236ET3ERS145TC	567	RSP	42	2.50	85.5	14.095	208-230/460V	RS
	1800	145TC	00218ET3ERS145TC	587	RSP	46	2.85	86.5	14.095	208-230/460V	RS
	1200	184TC	00212ET3ERS184TC	786	RSP	91	3.22	88.5	16.404	208-230/460V	RS
3	3600	182TC	00336ET3ERS182TC	735	RSP	80	3.68	87.5	16.404	208-230/460V	RS
	1800	182TC	00318ET3ERS182TC	642	RSP	74	3.91	89.5	16.404	208-230/460V	RS
	1200	213TC	00312ET3ERS213TC	1,082	RSP	122	4.41	89.5	20.257	208-230/460V	RS
5	3600	184TC	00536ET3ERS184TC	835	RSP	93	5.96	89.5	16.404	208-230/460V	RS
	1800	184TC	00518ET3ERS184TC	743	RSP	92	6.40	89.5	16.404	208-230/460V	RS
	1200	215TC	00512ET3ERS215TC	1,269	RSP	146	6.83	89.5	20.257	208-230/460V	RS
7.5	3600	213TC	00736ET3ERS213TC	1,079	RSP	125	8.63	91.0	20.257	208-230/460V	RS
	1800	213TC	00718ET3ERS213TC	1,046	RSP	139	9.29	91.7	20.257	208-230/460V	RS
	1200	254TC	00712ET3ERS254TC	1,957	RSP	237	9.73	91.0	24.925	208-230/460V	RS
10	3600	215TC	01036ET3ERS215TC	1,268	RSP	158	11.5	91.7	20.257	208-230/460V	RS
	1800	215TC	01018ET3ERS215TC	1,215	RSP	153	12.7	91.7	20.257	208-230/460V	RS
	1200	256TC	01012ET3ERS256TC	2,261	RSP	260	13.3	91.0	24.925	208-230/460V	RS
15	3600	254TC	01536ET3ERS254TC	1,736	RSP	214	16.9	91.7	22.956	208-230/460V	RS
	1800	254TC	01518ET3ERS254TC	1,758	RSP	238	18.0	92.4	24.925	208-230/460V	RS
20	3600	256TC	02036ET3ERS256TC	2,248	RSP	237	22.9	92.4	24.925	208-230/460V	RS
	1800	256TC	02018ET3ERS256TC	2,082	RSP	259	24.4	93.0	24.925	208-230/460V	RS

FEATURES AND BENEFITS

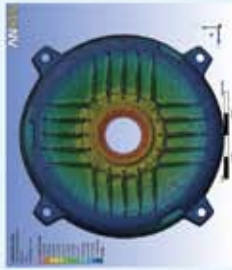
Fan Cover

Made of steel. It offers a superior mechanical rigidity, corrosion-resistance and extended lifetime.



Fan

WEG has designed fans and fan covers to produce one of the quietest electric motors in the market. Fans are fully efficient cooling ensuring low motor temperature rise, this minimizes winding losses, thus increasing motor efficiency.



WEG uses the Finite Element Analysis (FEA) software in its motor parts (endshields, frames, T-boxes, etc). FEA is used in order to detect deformations and thermal simulations of mechanical components. This system provides a unified product development environment offering a tight integration across a wide range of design processes ranging from geometry modeling and CAD editing, meshing and pre-processing, advanced analysis (structural, thermal, electromagnetics, etc.) and robust design optimization.

Winding

The wires are supplied with patented WISE (WEG Insulation System Evolution), which allows three times longer motor lifetime designed to work in environments with excess of moisture and suitable for VFD application.



Bearings

WEG motors are fitted with the highest quality bearings selected among the best manufacturers in the world and designed to ensure long life to the motor even under heavy working conditions.



Frame

Made of cold laminated steel plate with an anti-corrosive treatment.



Shaft

WEG uses SAE/AISI 1040/45 steel as standard, which provides high mechanical resistance, preventing flexing under load and minimizes fatigue which extends lifetime performance. Specially designed to withstand torques caused during motor acceleration and deceleration (brake). Size is larger than standard motor and, upon special design, shaft can have second end.

Endshields

Made of cast iron, provided with external fins for better heat dissipation, thus increasing bearing life.

Stator

Composed of highest quality steel laminations.

Rotor

Composed of magnetic laminations with low electrical losses. Pure alloy aluminum bars, form the cage and are cast under pressure into one piece.

Drain plugs

Provided with plastic drain plug allowing drainage of condensed water.

Seals

WEG motors are fitted with V-ring seals, Oil seals, Lip seals to provide the best possible protection in dusty and high moisture environments

Some worldwide entities that have approved WEG:





WEG Electric Motors Corp.
1327 Northbrook Parkway, Suite 490
Suwanee, GA 30024
Phone: 1-800-ASK-4WEG
web: www.wegelectric.com

Please contact your authorized distributor:

RS507AB