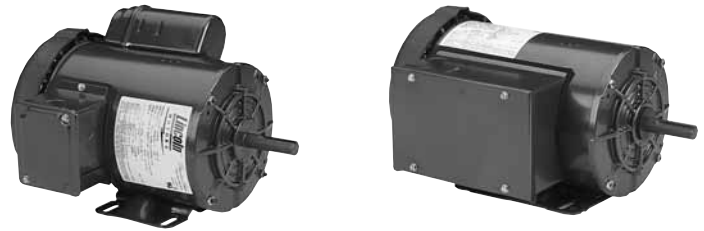


Signature Series **TEFC GENERAL PURPOSE**
 115, 208 AND 230 VOLTS • 1-PHASE
 FOOT MOUNT AND C-FACE
 1/4 TO 10 HP



Features:

- Durable rolled steel frame construction
- NEMA Design B performance
- Maintenance-free double sealed ball bearings
- Continuous Duty
- Premium Class B Insulation system
- Durable, easy-to-read mylar nameplate
- UL Recognized Component Listing and CSA certified
- Warranty - 18 months from date of manufacture and 12 months from date of installation which ever period expires first.
- Made in U.S.A.



Applications:

For use where exposure to water, dust and dirt exists. Ideally suited for use on pumps, compressors, fans, conveyors and other industrial equipment.

See page 189 for TEFC Single Phase motors with built-in overload protection.

FOOT MOUNT

HP	SYN RPM	Frame	SF	Volts	Model Number	Product Number	Notes (see page 306)	Approx Shpg Wght (lbs)	List Price	Mult Sym
1/4	1800	56	1.15	115/208-230	SRF4S0.25T1C6028	LM24606		18	\$379	SP-1
	1200	56	1.15	115/208-230	SRF6S0.25T1C6028	LM24545		25	472	SP-1
1/3	3600	56	1.15	115/208-230	SRF2S0.33T1C6028	LM24705		19	276	SP-1
	1800	56	1.15	115/208-230	SRF4S0.33T1C6028	LM24597		19	323	SP-1
	1200	56	1.15	115/208-230	SRF6S0.33T1C6028	LM24546		28	495	SP-1
1/2	3600	56	1.15	115/208-230	SRF2S0.5T1C6028	LM24706		23	317	SP-1
	1800	56	1.15	115/208-230	SRF4S0.5T1C6028	LM24627		24	369	SP-1
	1200	56	1.15	115/208-230	SRF6S0.5T1B6028	LM24496		36	704	SP-1
3/4	3600	56	1.15	115/208-230	SRF2S0.75T1C6028	LM24707		30	352	SP-1
	1800	56	1.15	115/208-230	SRF4S0.75T1C6028	LM24607		30	438	SP-1
	1200	56	1.15	115/208-230	SRF6S0.75T1B6028	LM24497		41	814	SP-1
1	3600	56	1.15	115/208-230	SRF2S1T1C6028	LM24708		31	413	SP-1
	1800	56	1.15	115/208-230	SRF4S1T1C6028	LM24610		32	505	SP-1
	1800	143T*	1.15	115/208-230	SSF4S1T1C6028	LM24709		34	556	SP-1
1 1/2	3600	56H*	1.15	115/208-230	SRF2S1.5T1B6028	LM24531		35	542	SP-1
	3600	143T*	1.15	115/208-230	SSF2S1.5T1B6028	LM24710		39	542	SP-1
	1800	56H*	1.15	115/208-230	SRF4S1.5T1B6028	LM24513		41	572	SP-1
	1800	145T*	1.15	115/208-230	SSF4S1.5T1B6028	LM24711		42	572	SP-1
2	3600	56H*	1.15	115/208-230	SRF2S2T1B6028	LM24533		40	707	SP-1
	3600	145T*	1.15	115/208-230	SSF2S2T1B6028	LM24712		41	707	SP-1
	1800	182T	1.15	115/208-230	SS182F4S2T1B6028	LM24713	D - 131509	54	811	SP-1
3	3600	145T*	1.15	208-230	SS145F2S3T1B6008	LM24714		48	762	SP-1
	3600	182T	1.00	115/208-230	SSF2S3T1B6028	LM24715	D - 131637	69	828	SP-1
	1800	184T	1.00	115/208-230	SS184F4S3T1C6028	LM24716	D - 131533	99	948	SP-1
5	3600	184T	1.00	208-230	SSF2S5T1B6008	LM24717	D - 131549	98	1145	SP-1
	1800	184T	1.00	208-230	SSF4S5T1B6008	LM24718	D - 131538	98	1130	SP-1
7 1/2	3600	213T	1.00	208-230	SSF2S7.5T1B6008	LM24719		120	1549	SP-1
	1800	215T	1.00	208-230	SS215F4S7.5T1B6008	LM24720		133	1495	SP-1
10	3600	215T	1.00	208-230	SSF2S10T1B6008	LM24721		138	1901	SP-1
	1800	215T	1.00	230	SSF4S10T1B66	LM24722		155	1940	SP-1

* 56H, 143T and 145T Combination Base with 12 mounting holes.

Prices and data subject to change without notice.

Product numbers in red are STOCK items.



Signature Series **TEFC GENERAL PURPOSE**
115, 208 AND 230 VOLTS • 1-PHASE
FOOT MOUNT AND C-FACE
1/4 TO 10 HP

C-FACE WITH FEET

HP	SYN RPM	Frame	SF	Volts	Model Number	Product Number	Notes (see page 306)	Approx Shpg Wght (lbs)	List Price	Mult Sym
1/4	1800	56C	1.15	115/208-230	SRF4S0.25TLC1C6028	LM24723		17	\$338	SP-1
1/3	3600	56C	1.15	115/208-230	SRF2S0.33TLC1C6028	LM24724		21	334	SP-1
	1800	56C	1.15	115/208-230	SRF4S0.33TLC1C6028	LM24600		19	358	SP-1
1/2	3600	56C	1.15	115/208-230	SRF2S0.5TLC1C6028	LM24725		23	339	SP-1
	1800	56C	1.15	115/208-230	SRF4S0.5TLC1C6028	LM24628		24	434	SP-1
3/4	3600	56C	1.15	115/208-230	SRF2S0.75TLC1C6028	LM24726		30	382	SP-1
	1800	56C	1.15	115/208-230	SRF4S0.75TLC1C6028	LM24615		30	521	SP-1
1	3600	56C	1.15	115/208-230	SRF2S1TLC1C6028	LM24727		31	439	SP-1
	1800	56C	1.15	115/208-230	SRF4S1TLC1C6028	LM24616		32	588	SP-1
1 1/2	3600	56HC	1.15	115/208-230	SRF2S1.5TLC1B6028	LM24539		35	571	SP-1
	1800	56HC	1.15	115/208-230	SRF4S1.5TLC1B6028	LM24728		41	695	SP-1
2	3600	56HC	1.15	115/208-230	SRF2S2TLC1B6028	LM24729		40	749	SP-1
	3600	145TC	1.15	115/208-230	SSF2S2TLC1B6028	LM24730		40	749	SP-1
	1800	145TC	1.15	115/230	SSF4S2TLC1B6028	LM24731		52	943	SP-1
3	3600	145TC	1.15	208-230	SS145F2S3TLC1B6008TP1	LM29441		48	833	SP-1

C-FACE FOOTLESS

HP	SYN RPM	Frame	SF	Volts	Model Number	Product Number	Notes (see page 306)	Approx Shpg Wght (lbs)	List Price	Mult Sym
1/4	1800	56C	1.15	115/208-230	SRN4S0.25TLCN1C6028	LM24733		18	\$302	SP-1
1/3	3600	56C	1.15	115/208-230	SRN2S0.33TLCN1C6028	LM24734		20	300	SP-1
	1800	56C	1.15	115/208-230	SRF4S0.33TLCN1C6028	LM24598		19	328	SP-1
	1200	56C	1.15	115/208-230	SRF6S0.33TLCN1C6028	LM24735		28	501	SP-1
1/2	3600	56C	1.15	115/208-230	SRF2S0.5TLCN1C6028	LM24736		23	341	SP-1
	1800	56C	1.15	115/208-230	SRF4S0.5TLCN1C6028	LM24599		24	389	SP-1
	1200	56C	1.15	115/208-230	SRF6S0.5TLCN1B6028	LM24737		36	540	SP-1
3/4	3600	56C	1.15	115/208-230	SRF2S0.75TLCN1C6028	LM24738		30	357	SP-1
	1800	56C	1.15	115/208-230	SRF4S0.75TLCN1C6028	LM24613		30	415	SP-1
	1200	56C	1.15	115/208-230	SRF6S0.75TLCN1B6028	LM24739		41	566	SP-1
1	3600	56C	1.15	115/208-230	SRF2S1TLCN1C6028	LM24740		31	423	SP-1
	1800	56C	1.15	115/208-230	SRF4S1TLCN1C6028	LM24614		32	443	SP-1
	1800	143TC	1.15	115/208-230	SSF4S1TLCN1C6028	LM24741		35	443	SP-1
1 1/2	3600	56C	1.15	115/208-230	SRF2S1.5TLCN1B6028	LM24535		35	464	SP-1
	1800	56C	1.15	115/208-230	SRF4S1.5TLCN1B6028	LM24622		41	471	SP-1
2	3600	56C	1.15	115/208-230	SRF2S2TLCN1B6028	LM24530		40	529	SP-1
3	3600	145TC	1.15	208-230	SS145F2S3TLCN1B6008	LM24742		48	604	SP-1

* 56H, 143T and 145T Combination Base with 12 mounting holes.
 Prices and data subject to change without notice.

Product numbers in red are STOCK items.

115, 208 AND 230 VOLTS • 1-PHASE
FOOT MOUNT
1/3 TO 3 HP**Features:**

- Built-in thermal overload protection
- Durable rolled steel frame construction
- NEMA Design B performance
- Maintenance-free double sealed ball bearings
- Continuous Duty
- Premium Class B Insulation system
- Durable, easy-to-read mylar nameplate
- UL Recognized Component Listing and CSA certified
- Warranty - 18 months from date of manufacture and 12 months from date of installation which ever period expires first.
- Made in U.S.A.

Applications:

For use where exposure to water, dust and dirt exists. Ideally suited for use on pumps, compressors, fans, conveyors and other industrial equipment where thermal overload protection is desired.



CAUTION A motor with an auto reset protector (TP2 suffix) must not be used where automatic restarting (after motor cool-down) would endanger personnel or equipment. Such applications should use a manual reset protector (TP1).

FOOT MOUNT

HP	SYN RPM	Frame	SF	Volts	Model Number	Product Number	Notes (see page 306)	Approx Shpg Wght (lbs)	List Price	Mult Sym
1/3	1800	56	1.15	115/208-230	SRF4S0.33T1C6028TP1	LM24602	ML	20	\$369	SP-1
	1800	56	1.15	115/208-230	SRF4S0.33T1C6028TP2	LM24601	AT	19	378	SP-1
1/2	3600	56	1.15	115/208-230	SRF2S0.5T1C6028TP1	LM24743	ML	23	339	SP-1
	1800	56	1.15	115/208-230	SRF4S0.5T1C6028TP1	LM24604	ML	24	433	SP-1
	1800	56	1.15	115/208-230	SRF4S0.5T1C6028TP2	LM24603	AT	24	441	SP-1
3/4	3600	56	1.15	115/208-230	SRF2S0.75T1C6028TP1	LM24744	ML	26	375	SP-1
	1800	56	1.15	115/208-230	SRF4S0.75T1C6028TP1	LM24609	ML	30	510	SP-1
	1800	56	1.15	115/208-230	SRF4S0.75T1C6028TP2	LM24608	AT	30	536	SP-1
1	3600	56	1.15	115/208-230	SRF2S1T1C6028TP1	LM24745	ML	31	464	SP-1
	1800	56	1.15	115/208-230	SRF4S1T1C6028TP1	LM24612	ML	32	580	SP-1
	1800	56	1.15	115/208-230	SRF4S1T1C6028TP2	LM24611	AT	32	601	SP-1
1 1/2	3600	56H*	1.15	115/208-230	SRF2S1.5T1B6028TP1	LM24532	ML	35	635	SP-1
	1800	56H*	1.15	115/208-230	SRF4S1.5T1B6028TP1	LM24515	ML	41	657	SP-1
	1800	56H*	1.15	115/208-230	SRF4S1.5T1B6028TP2	LM24514	AT	41	714	SP-1
	1800	145T	1.15	115/208-230	SSF4S1.5T1B6028TP1	LM24746	ML	43	657	SP-1
2	3600	56H*	1.15	115/208-230	SRF2S2T1B6028TP1	LM24534	ML	40	744	SP-1
	3600	145T	1.15	115/208-230	SSF2S2T1B6028TP1	LM24747	ML	40	744	SP-1
3	3600	145T	1.15	208-230	SS145F2S3T1B6028TP1	LM24748	ML	48	762	SP-1

Prices and data subject to change without notice.

Product numbers in red are STOCK items.