

## Grain Stirring, Single Phase

### Totally Enclosed Fan Cooled, Rigid Base

**Applications:** Definite purpose for grain stirring systems inside grain bins.

- Features:**
- 1.15 Service Factor
  - Fully gasketed construction to keep grain dust out
  - 7/8" diameter shaft
  - Fan/Fan guard on shaft end keeps grain dust out of motor
  - Durable powder coat paint
  - Manual reset thermal protector
  - Ball bearings



HP	RPM	VOLTS	FRAME	CAT. NO.	MODEL NO.	LIST PRICE	MULT. SYMB.	F.L. AMPS	APPROX. WGT. LBS.	"C" DIM.	FOOT NOTES
<b>1 1/2</b>	1800	115/208-230	56HZ	X902	56B17F5324	\$425	F1	15.2/8.2-7.6	46	13.21	1,5

## Agriculture Fan, Single Phase, Belt Drive

### Totally Enclosed, Air Over, Rigid Base

**Applications:** Designed for demanding agricultural belt drive fan applications such as poultry house fans and barn exhaust fans. **Catalog X912 is Totally Enclosed Air Over and must be mounted within the airstream for proper cooling.**

- Features:**
- Capacitor start/capacitor run design for higher efficiency
  - Ball bearings
  - Continuous duty
  - Automatic reset thermal protector
  - Fully gasketed



HP	RPM	VOLTS	FRAME	CAT. NO.	MODEL NO.	LIST PRICE	MULT. SYMB.	F.L. AMPS	APPROX. WGT. LBS.	"C" DIM.	FOOT NOTES
<b>1/2</b>	1725	115/230	56	X913 ★	56B17T20	\$284	F1	4.6/2.3	20	10.47	1
<b>1</b>	1725	115/230	56	X912 ★	56B17T5303	\$371	F1	9.2/4.6	32	11.44	1

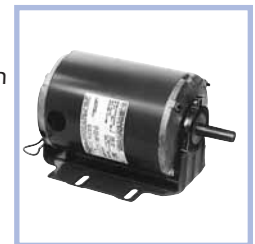
★ Stock Model

## Agriculture Fan, Single Phase, PSC Variable Speed

### Totally Enclosed-Air Over, Resilient Base-Thru Bolt

**Applications:** Designed for demanding agricultural fan applications such as poultry houses and barn exhaust fans. Must be mounted within the airstream for proper cooling. Variable speed capabilities when used with a single phase speed control unit—NOT supplied by Marathon Electric. Super Variable speed motors, catalog X030, X031, and X032, are designed for lower temperature rise throughout a greater speed range.

- Features:**
- Ball bearings
  - Extended thru-bolts
  - Fully gasketed
  - Continuous duty
  - Automatic reset thermal protector
  - 1/2" dia. x 2-1/2" long shaft with two flats, 90° apart
  - 48Y & 48YZ have 48/56 Fr. mounting holes



HP	RPM	VOLTS	FRAME	CAT. NO.	MODEL NO.	LIST PRICE	MULT. SYMB.	F.L. AMPS	APPROX. WGT. LBS.	"C" DIM.	FOOT NOTES
<b>1/4</b>	1625	115/230	48YZ	X030 ★	48A17T118	\$203	F1	3.6/1.8	20	11.06	
	1625	115/230	48YZ	X024 ★	48A17T2002	\$166	F1	3.2/1.6	19	10.09	
	1075	115/230	48YZ	X027 ★	48A11T2021	\$180	F1	3.2/1.6	14	10.09	
<b>1/3</b>	1625	115/230	48YZ	X031 ★	48A17T237	\$224	F1	3.8/1.9	23	11.81	
	1625	115/230	48YZ	X025 ★	48A17T2003	\$184	F1	4.4/2.2	17	10.09	
	1075	115/230	48YZ	X028 ★	48A11T2022	\$195	F1	4.2/2.1	15	10.84	
<b>1/2</b>	1625	115/230	48YZ	X032 ★	48A17T119	\$247	F1	5.4/2.7	23	11.81	
	1625	115/230	48YZ	X026 ★	48A17T2004	\$200	F1	6.0/3.0	21	10.84	
	1075	115/230	48YZ	X029 ★	48A11T2023	\$209	F1	6.4/3.2	19	10.84	

★ Stock Model

**Footnotes:**

- 1 Capacitor Start/Capacitor Run design for reduced amperage  
 5 56H, 143T, and 145T Combination Base with 12 mounting holes

## Agriculture Fan, Single Phase

### Totally Enclosed, Direct Drive-Thru Bolt



**Applications:** Designed for demanding, direct drive agricultural fan applications such as poultry house fans and barn exhaust fans.

- Features:**
- Economical split phase, single speed design
  - Continuous duty
  - 1/2" Extended thru-bolts
  - 1/2" diameter x 1.5" long shaft with flat
  - Ball bearings
  - Manual reset thermal protector
  - Fully gasketed

HP	RPM	VOLTS	FRAME	CAT. NO.	MODEL NO.	LIST PRICE	MULT. SYMB.	F.L. AMPS	APPROX. WGT. LBS.	"C" DIM.	FOOT NOTES
1/4	1725	115	48Y	X909 *	48S17T2004	\$145	F1	4.0	10	7.62	3

★ Stock Model

## Agriculture Fan, Single Phase, Single Speed

### Totally Enclosed-Air Over, Resilient Base-Thru Bolt



**Applications:** Designed for demanding agricultural fan applications such as poultry house fans and barn exhaust fans. Must be mounted within the airstream for proper cooling.

- Features:**
- Economical split phase, single speed design
  - Ball bearings
  - Continuous duty
  - Automatic reset thermal protector
  - Extended thru-bolts on X903 and X904
  - Fully gasketed
  - 48Z Frame has 1/2" dia. x 2-1/2" long shaft with two flats
  - 56Z Frame has 1/2" dia. x 1-7/8" long with 1-5/8" flat
  - 48Y & 48YZ have 48/56 Fr. mounting holes

HP	RPM	VOLTS	FRAME	CAT. NO.	MODEL NO.	LIST PRICE	MULT. SYMB.	F.L. AMPS	APPROX. WGT. LBS.	"C" DIM.	FOOT NOTES
1/4	1725	115	48YZ	X903 *	48S17T2001	\$147	F1	3.5	18	11.34	3,53
1/3	1725	115	48YZ	X904 *	48S17T2000	\$166	F1	4.5	21	11.34	3,53
1/2	1725	115/230	56Z	X900 *	56S17T2002	\$225	F1	6.6/3.3	24	10.72	3,53
3/4	1725	115/230	56	X905	56C17T5301	\$291	F1	11.0/5.5	28	11.35	2
1	1725	115/230	56	X906	56C17T5302	\$341	F1	13.4/6.7	30	11.85	2
1 1/2	1725	115/208-230	56H	X908	56B17T5302	\$401	F1	13.6/7.5-6.8	43	12.85	1,5

★ Stock Model

## Agriculture Fan, Single Phase, Two Speed

### Totally Enclosed-Air Over, Direct Drive-Thru Bolt



**Applications:** Designed for demanding, direct drive agricultural fan applications such as poultry house fans and barn exhaust fans where two speeds are desired. Must be mounted within the airstream for proper cooling.

- Features:**
- Economical split phase, two-speed design
  - Ball bearings
  - Continuous duty
  - Automatic reset thermal protector
  - Extended thru-bolts
  - Fully gasketed
  - 1/2" dia. x 2-1/2" long shaft with two flats, 90 degrees apart

HP	RPM	VOLTS	FRAME	CAT. NO.	MODEL NO.	LIST PRICE	MULT. SYMB.	F.L. AMPS	APPROX. WGT. LBS.	"C" DIM.	FOOT NOTES
1/4	1725/1140	115	48YZ	X910 *	48S17T366	\$188	F1	4.1/2.5	17	11.09	3
1/3	1725/1140	115	48YZ	X911 *	48S17T365	\$236	F1	5.3/2.9	18	11.34	3

★ Stock Model

**Footnotes:**

- 1 Capacitor Start/Capacitor Run design for reduced amperage  
 2 Capacitor Start Induction Run design

- 3 Split Phase design  
 5 56H, 143T, and 145T Combination Base with 12 mounting holes  
 53 Includes 5/8" dia. shaft adapter sleeve with key

# Crop Dryer, Single Phase

## Dripproof/Air Over, Rigid Base

**Applications:** Crop dryers with air over/fan on shaft designs.

- Features:**
- Double sealed ball bearings
  - Continuous duty
  - Class F insulation system
  - Thermostats for thermal overload protection (auto reset protector on Z304)
  - 34" long leads for ease of installation
  - Keyed shafts with 1/4"-20 UNC tapped hole in end
  - Frame mounted capacitors on catalog Z304, Z305, Z306, Z309, Z313, Z314, and Z315
  - Capacitors included, shipped loose on catalog Z307 and Z308
  - Extra nameplate included, loose, for remote mounting
  - See dimensions section for typical outline drawing

HP	RPM	VOLTS	FRAME	OVER LOAD	CAT. NO.	MODEL NO.	LIST PRICE	MULT. SYMB.	F.L. AMPS	APPROX. WGT. LBS.	"C" DIM.	FOOT NOTES
<b>3-4.5</b>	3600	230	145TZ	AUTO	Z304★	145TBDR5309	\$568	S1	13.0-19.0	44	13.74	1
<b>3-5</b>	3600	230	182TZ	TSTAT	Z309	182TCDR7013	\$683	S1	15.8-25.3	67	15.00	2
<b>5-7.5</b>	3600	230	184TZ	TSTAT	Z305★	184TCDR7615	\$832	S1	27.0-36.3	73	14.50	2
<b>7-10</b>	3600	230	184TZ	TSTAT	Z307★	184TBDR7009	\$1,047	S1	28.0-42.0	95	16.00	1
<b>7.5-10</b>	3600	230	184TZ	TSTAT	Z313	184TBDR7324	\$1,047	S1	30.0-42.0	89	16.43	1
<b>7.5-10.5</b>	3600	230	215TZ	TSTAT	Z314	215TCDW7012	\$1,224	S1	37.0-49.5	139	19.16	2
<b>7-9</b>	3600	230	184TZ	TSTAT	Z306★	184TCDR7617	\$939	S1	36.0-45.0	85	15.50	2
<b>10-15</b>	3600	230	215TZ	TSTAT	Z315	215TBDW7013	\$1,409	S1	39.5-61.5	159	20.42	1
	3600	230	215TZ	TSTAT	Z308★	215TCDW7003	\$1,409	S1	46.0-71.0	135	18.16	2

★ Stock Model

# Crop Dryer, Three Phase

## Dripproof/Air Over, Rigid Base

**Applications:** Crop dryers with air over/fan on shaft designs where three phase power is available.

- Features:**
- Ball bearings
  - Thermostats for thermal overload protection
  - 34" long leads exit elbow connector in bracket
  - Keyed shafts with 1/4"-20 UNC tapped hole in end
  - Extra nameplate included, loose, for remote mounting
  - See dimension section for typical outline drawing
  - Continuous duty
  - Class F insulation

HP	RPM	VOLTS	FRAME	CAT. NO.	MODEL NO.	LIST PRICE	MULT. SYMB.	F.L. AMPS	APPROX. WGT. LBS.	"C" DIM.
<b>3-3.9</b>	3600	208-220/440	182TZ	Y301	-----	\$655	E6	8.6-8.4/4.2	70	13.71
<b>5-7</b>	3600	208-220/440	184TZ	Y302★	184TTDR7611	\$697	E6	17-17/8.5	67	13.71
<b>7-10</b>	3600	208-220/440	184TZ	Y303★	184TTDR7612	\$739	E6	28.0-27.0/13.5	73	14.22
<b>10-15</b>	3600	208-220/440	215TZ	Y304★	215TTDW7301	\$975	E6	28-26.1/13.1	95	17.41

★ Stock Model

**Footnotes:**

- 1 Capacitor Start/Capacitor Run design for reduced amperage
- 2 Capacitor Start Induction Run design

## Farm Duty/Agriculture, High Torque

### Single Phase, Totally Enclosed Fan Cooled, Rigid Base



**Applications:** Feeders, conveyors, fans, compressors, spray washers, grinders, elevators, pumps, and other demanding agricultural applications that require high starting torques.

- Features:**
- Ball bearings
  - 1.15 Service Factor
  - Manual reset thermal protector
  - Low temperature manual reset thermal protector
  - Totally enclosed and fully gasketed construction for dirty environments
  - Condensate drains
  - Shaft slinger
  - UL Recognized and CSA Certified

HP	RPM	VOLTS	FRAME	CAT. NO.	MODEL NO.	LIST PRICE	MULT. SYMB.	F.L. AMPS	APPROX. WGT. LBS.	"C" DIM.	FOOT NOTES
<b>1/3</b>	1800	115/208-230	56	F101 ★	56C17F5324	\$266	F1	6.6/3.1-3.3	24	11.82	2
<b>1/2</b>	1800	115/208-230	56	F102 ★	56C17F5325	\$304	F1	8.8/4.2-4.4	25	11.82	2
<b>3/4</b>	1800	115/208-230	56	F103 ★	56C17F5326	\$363	F1	11.0/5.4-5.5	29	12.32	2
<b>1</b>	1800	115/208-230	143T	Z123 ★	143TCFR5328	\$420	S1	13.4/6.8-6.7	33	12.87	2
	1800	115/208-230	56	F104 ★	56C17F5327	\$395	F1	13.4/6.8-6.7	32	12.82	2
<b>1 1/2</b>	1800	115/208-230	145T	Z118 ★	145TBFR5328	\$495	S1	15.2/8.2-7.6	42	13.87	1
	1800	115/208-230	56H	F105 ★	56B17F5307	\$486	F1	15.2/8.2-7.6	41	13.82	1,5
<b>2</b>	1800	115/230	145T	Z128 ★	145TBFR5341	\$550	S1	18.8/9.4	50	14.87	1
	1800	115/230	182T	Z119 ★	182TCFR7072	\$599	S1	26.8/13.4	64	15.53	2
<b>3</b>	1800	230	184T	Z120 ★	184TCFR7061	\$746	S1	17.0	92	18.03	2
<b>5</b>	1800	230	184T	Z121 ★	184TBFR7737	\$908	S1	20.2	99	18.06	1
<b>7 1/2</b>	1800	230	215T	Z122 ★	215TBFW7029	\$1,347	S1	30.0	138	21.48	1

★ Stock Model

## Farm Duty/Agriculture, High Torque

### Single Phase, Totally Enclosed Fan Cooled, C-Face, Rigid Base



**Applications:** Feeders, conveyors, fans, compressors, spray washers, grinders, elevators, pumps, and other demanding agricultural applications that require high starting torques.

- Features:**
- Ball bearings
  - 1.15 Service Factor
  - Manual reset thermal protector
  - Low temperature manual reset thermal protector
  - Totally enclosed and fully gasketed construction for dirty environments
  - Condensate drains
  - Shaft slinger
  - UL Recognized and CSA Certified
  - Made in the U.S.A.

HP	RPM	VOLTS	FRAME	CAT. NO.	MODEL NO.	LIST PRICE	MULT. SYMB.	F.L. AMPS	APPROX. WGT. LBS.	"C" DIM.	FOOT NOTES
<b>1/3</b>	1800	115/208-230	56C	F131★	56C17F5358	\$325	F1	6.6/3.1-3.3	24	11.82	2
<b>1/2</b>	1800	115/208-230	56C	F132★	56C17F5912	\$363	F1	8.8/4.2-4.4	25	11.82	2
<b>3/4</b>	1800	115/208-230	56C	F133★	56C17F5913	\$422	F1	11/5.4-5.5	29	12.32	2
<b>1</b>	1800	115/208-230	56C	F134★	56C17F5914	\$454	F1	13.4/6.8-6.7	35	12.82	2
<b>1 1/2</b>	1800	115/208-230	56HC	F135★	56B17F5584	\$545	F1	15.2/8.2-7.6	41	13.82	1,5
<b>2</b>	1800	115/230	56HC	K319★	56B17F5319	\$559	F1	18.8/9.4	53	14.82	1,5
<b>3</b>	1800	230	184TC	I314★	184TBFR7041	\$838	S1	13.7	104	17.61	1
<b>5</b>	1800	230	184TC	I315★	184TBFR7034	\$1,000	S1	21.0	98	18.72	1

★ Stock Model

**Footnotes:**

- 1 Capacitor Start/Capacitor Run design for reduced amperage
- 2 Capacitor Start Induction Run design
- 5 56H, 143T, and 145T Combination Base with 12 mounting holes

# Farm Duty/Agriculture, Extra-High Torque Chore Motor®

## Single Phase, Totally Enclosed Fan Cooled, Rigid Base

**Applications:** Silo unloaders, barn cleaners, bunk feeders, conveyors, and other machinery requiring extra-high starting torque in demanding farm duty environments.

- Features:**
- Class F insulation
  - 1.15 Service Factor
  - 300% and greater starting torque for hard-to-start applications
  - Totally enclosed and fully gasketed for dirty environments
  - 213TZ/215TZ models have 1-1/8" shaft, 182TZ model has 7/8" shaft
  - See dimension section for typical outline drawing
  - Manual reset thermal protector
  - Condensate drains
  - Shaft slinger



HP	RPM	VOLTS	FRAME	BRGS.	CAT. NO.	MODEL NO.	LIST PRICE	MULT. SYMB.	F.L. AMPS	APPROX. WGT. LBS.	"C" DIM.	FOOT NOTES
<b>2</b>	1800	115/230	182TZ	BALL	Z112★	182TCFR9061	\$634	S1	25.6/12.8	63	15.31	CF,2
<b>3</b>	1800	230	184T	BALL	Z113★	184TCFR9057	\$789	S1	18.0	83	16.81	CF,2
<b>5</b>	1800	208-230	184T	BALL	Z114★	184TBFR7070	\$962	S1	24.0-22.5	97	17.36	1
	1800	230	213TZ	BALL	Z117★	213TBFW7027	\$1,070	S1	23.0	119	18.73	1
<b>7 1/2</b>	1800	230	215TZ	BALL	Z115★	215TBFW7028	\$1,428	S1	32.0	142	21.48	1
<b>10</b>	1800	230	215T	BALL	Z116★	215TBFW7044	\$1,778	S1	40.0	148	21.48	1,17

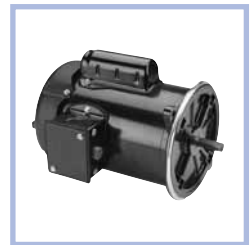
★ Stock Model

## Auger Drive, Single Phase

### Totally Enclosed Fan Cooled, 56N Flange Mount

**Applications:** Replacement motors for poultry feed auger drive systems bolt to existing gearbox for easy installation.

- Features:**
- NEMA 56N, two bolt flange mounting
  - Fully gasketed, side mount conduit box
  - Extended fan-end shaft with flats for manual jogging auger drive
  - Mechanical start switch protected from overspeeded auger drive
  - Catalog Nos. F201, F202, & F203 have 1/2" dia. X 1 1/2" long shaft with flat
  - Catalog Nos. F204 & F205 have 5/8" dia. x 2" long shaft with key
  - See dimension section for typical outline drawing
  - Manual reset thermal protector



HP	RPM	VOLTS	FRAME	BRGS.	CAT. NO.	MODEL NO.	LIST PRICE	MULT. SYMB.	F.L. AMPS	APPROX. WGT. LBS.	"C" DIM.	FOOT NOTES
<b>1/3</b>	1800	115/230	48N	BALL	F201★	48C17F2000	\$286	F1	5.0/2.5	13	11.31	2
	1800	115/230	48NZ	BALL	F1201★	48C17F11005	\$286	F1	6.2/3.1	21	10.31	E,2
<b>1/2</b>	1800	115/208-230	48N	BALL	F202★	48C17F2001	\$314	F1	6.8/3.7-3.4	25	11.81	2
	1800	115/208-230	48NZ	BALL	F1202★	48C17F11006	\$314	F1	8.0/3.8-4.0	22	10.56	E,2
<b>3/4</b>	1800	115/208-230	56NZ	BALL	F203★	56C17F5356	\$371	F1	11.0/5.4-5.5	34	12.58	2
	1800	115/208-230	48NZ	BALL	F1203★	48C17F11007	\$371	F1	10.8/5.3-5.4	24	11.31	E,2
<b>1</b>	1800	115/208-230	56NZ	BALL	F204★	56C17F5357	\$416	F1	13.4/6.8-6.7	34	13.38	2
	1800	115/230	56NZ	BALL	F1204★	56C17F15537	\$416	F1	13.4/6.7	31	13.38	E,2
<b>1 1/2</b>	1800	115/208-230	56NZ	BALL	F205★	56B17F5331	\$501	F1	15.2/8.2-7.6	44	14.38	1
	1800	115/230	56NZ	BALL	F1205★	56B17F15516	\$501	F1	15.2/7.6	40	14.38	E,1

★ Stock Model

**Footnotes:**

- CF Consult Factory for Accessory Kit and/or Modification Selection
- E Design incorporates electronic switch
- 1 Capacitor Start/Capacitor Run design for reduced amperage
- 2 Capacitor Start Induction Run design
- 17 1.0 Service Factor