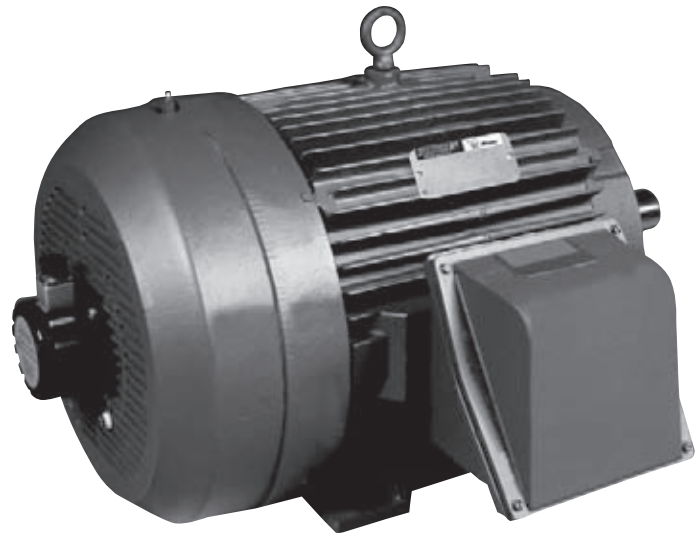


V*S MASTER

VARIABLE SPEED MOTORS

- 1000:1 Constant Torque Inverter Duty AC Motors
- TEFC Enclosures in Standard NEMA Frame Ratings
- Totally Enclosed Blower Cooled Performance in TEFC Enclosures
- 2 to 500HP



The V*S Master Inverter Duty AC Motors are designed to provide full load torque continuously from 0 to base speed, often referred to as a 1000:1 constant torque rating. All V*S Master motors are in standard NEMA frame sizes, smaller ratings in TENV or TEFC enclosures and larger ratings are TEFC.

V*S Master Inverter Duty AC Motors are specifically designed for operation on inverter power, not for "across the line" operation. The V*S Master has Reliance's inverter duty insulation system which exceeds NEMA's recommendation for Inverter-fed AC motors. Reliance's inverter duty AC motors eliminate the formation of corona that will greatly shorten the insulation life of an AC motor that is connected to a PWM inverter. Reliance's Corona-Free insulation system provides much longer life to AC motors compared to a motor that only uses "corona resistant or spike resistant" materials. The V*S Master motors provide an insulated bearing as standard on all 440 frames.

Features:

- Ratings (HP) in NEMA standard frame sizes - TENV or TEFC
- Continuous constant rated torque from 0 to base speed (1000:1)
- TEFC enclosures provide class B rise over the 4:1 constant torque speed range
- Cast Iron frames and end shields

- 200% overload torque for 1 minute below base speed
- Standard base speeds available: 900, 1200 and 1800 RPM.
- Constant horsepower operation to 1.5 times base speed
- Three normally closed thermostats
- Hole drilled and tapped in shaft for encoder mounting
- Opposite drive end insulated bearing on all 440T frames
- Stocked ratings from 2 HP to 300 HP
- C-face with feet stocked from 2 HP to 20 HP
- Inverter Duty insulation system
- Optimized electrical design for inverter power, not for "across the line" power
- Class F insulation
- 40°C ambient temperature
- Continuous duty
- 1.0 service factor on inverter power
- Re-greaseable bearings
- Stainless steel nameplates
- Hex head hardware

✓ Aggregate/Cement

✓ Food

✓ Mining

✓ Forest/Paper

✓ Petro/Chem

✓ Unit/Baggage Handling

✓ HVAC/Industrial Air Handling

✓ Environmental/Fluid Power

✓ Automotive

✓ Metals

- Many modifications available through production or stock modification
- Encoder mounting kits available from stock for hollow shaft encoders such as the RA HS35-MS, BEI HS35 and Lakeshore HSD35.

- Large Selection of different types of encoders available on production orders.

Applications:

Inverter Duty Applications that require variable or constant torque over 2:1, 4:1, 10:1 or 1000:1 speed ranges. Best

solution for Extruders, Web Processing, Paper Machines, Paper Converting, Metal Processing and other applications that require a large constant torque speed range. Replace troublesome totally enclosed blower-cooled (TEBC) motors with this TEFC motor.

RATINGS for 2-500HP

| HP | BASE RPM | FRAME | ENCL | M/N | *460V AMPS |
|-----|----------|-------|--------|----------|------------|
| 2 | 1200 | TEFC | 184TC | P18G1192 | 2.6 |
| 2 | 1200 | TENV | 184TC | P18G1187 | 2.7 |
| 3 | 1800 | TEFC | 182TC | P18G1193 | 3.8 |
| 3 | 1800 | TENV | 184TC | P18G1188 | 3.7 |
| 3 | 1200 | TEFC | 213TC | P21G1165 | 3.9 |
| 3 | 1200 | TENV | 215T | P21G3205 | 3.9 |
| 5 | 1800 | TEFC | L184TC | P18G1194 | 6.4 |
| 5 | 1800 | TENV | L184TC | P18G1189 | 6.4 |
| 5 | 1200 | TEFC | L215TC | P21G1166 | 6.3 |
| 5 | 1200 | TENV | L215T | P21G3206 | 6.2 |
| 7.5 | 1800 | TEFC | 213TC | P21G1167 | 10.8 |
| 7.5 | 1800 | TENV | L215TC | P21G1162 | 9.2 |
| 7.5 | 1200 | TEFC | 254T | P25G3205 | 9.5 |
| 10 | 1800 | TENV | 254TC | P25G1152 | 12.7 |
| 10 | 1800 | TEFC | L215TC | P21G1164 | 12.4 |
| 10 | 1200 | TEFC | 256T | P25G3206 | 12.6 |
| 15 | 1800 | TEFC | 254TC | P25G1153 | 18.4 |
| 15 | 1800 | TENV | 256TC | P25G1150 | 18.7 |
| 15 | 1200 | TEFC | 284T | P28G3205 | 19.2 |
| 20 | 1800 | TENV | 284T | P28G3208 | 24.3 |
| 20 | 1800 | TEFC | 256TC | P25G1151 | 25.6 |
| 20 | 1200 | TEFC | 286T | P28G3206 | 25.3 |
| 25 | 1800 | TENV | 324T | P32G3210 | 30.6 |
| 25 | 1800 | TEFC | 284TC | P28G1083 | 31.0 |
| 25 | 1200 | TEFC | 324T | P32G3205 | 31.6 |
| 30 | 1800 | TENV | 326T | P32G3209 | 36.4 |
| 30 | 1800 | TEFC | 286T | P28G3207 | 38.3 |
| 30 | 1200 | TEFC | 326T | P32G3206 | 37.5 |
| 40 | 1800 | TENV | 364T | P36G3209 | 48.2 |
| 40 | 1800 | TEFC | 324T | P32G3207 | 49.8 |
| 40 | 1200 | TEFC | 364T | P36G3205 | 49.6 |

2-500HP (continued)

| HP | BASE RPM | ENCL | FRAME | M/N | *460V AMPS |
|-----|----------|------|-------|----------|------------|
| 50 | 1800 | TENV | 404T | P40G3208 | 57.9 |
| 50 | 1800 | TEFC | 326T | P32G3208 | 62.6 |
| 50 | 1200 | TEFC | 365T | P36G3206 | 60.7 |
| 60 | 1800 | TEFC | 364T | P36G3207 | 71.4 |
| 60 | 1200 | TEFC | 404T | P40G3205 | 71.1 |
| 75 | 1800 | TEFC | 365T | P36G3208 | 89.4 |
| 75 | 1200 | TEFC | 405T | P40G3206 | 85.1 |
| 100 | 1800 | TEFC | 405T | P40G3207 | 116.0 |
| 100 | 1200 | TEFC | 444T | P44G3205 | 115.0 |
| 125 | 1800 | TEFC | 444T | P44G3207 | 151.0 |
| 125 | 1200 | TEFC | 445T | P44G3206 | 151.0 |
| 150 | 1800 | TEFC | 445T | P44G3208 | 177.0 |
| 150 | 1200 | TEFC | 447T | P44G3209 | 177.0 |
| 200 | 1800 | TEFC | 447T | P44G3213 | 226.0 |
| 200 | 1200 | TEFC | 449T | P44G3210 | 224.0 |
| 250 | 1800 | TEFC | 449T | P44G3214 | 279.0 |
| 250 | 1200 | TEFC | L449T | P44G3211 | 283.0 |
| 300 | 1800 | TEFC | 449T | P44G3215 | 339.0 |
| 300 | 1200 | TEFC | L449T | P44G3212 | 354.0 |
| 350 | 1800 | TEFC | L449T | P44G3216 | 398.0 |
| 400 | 1800 | TEFC | L449T | P44G3217 | 446.0 |
| 450 | 1800 | TEFC | L449T | P44G3218 | 502.0 |
| 500 | 1800 | TEFC | L449T | P44G3221 | 551.0 |

*Typical full load AMPS. Ratings 2HP @ 1200 RPM through 15HP @ 1800 RPM are stocked as 230/460 VAC.

Notes: Other base speeds and voltages available.

All V*S Master motors are manufactured in the U.S.A.

www.baldor.com www.ptplace.com www.dodge-pt.com www.reliance.com



Baldor Electric Company Headquarters

P.O. Box 2400, Fort Smith, AR 72902-2400 U.S.A., Ph: (1) 479.646.4711, Fax (1) 479.648.5792, International Fax (1) 479.648.5895

Baldor - DODGE/Reliance

6040 Ponders Court, Greenville, SC 29615-4617 U.S.A., Ph: (1) 864.297.4800, FAX: (1) 864.281.2433

RAPS-540-3 6/07-00M-K Copyright © 2007 Baldor Electric Company All Rights Reserved. Printed in USA.

This material is not intended to provide operational instructions. Appropriate instruction manuals and precautions should be studied prior to installation, operation or maintenance of equipment.