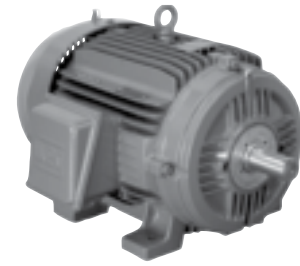


THREE PHASE

WEG's W21™ NEMA Premium motors meet or exceed all NEMA Premium and CEE requirements for energy efficiency. These WEG IEEE 841 High Efficiency Mill and Chemical Duty Motors are specially suited for Pulp and Paper Mills, Petrochemical, Steel Mills and applications requiring Severe Duty long life motors.



Meets IEEE - 2001 Specification

FRACTIONAL HP

GENERAL PURPOSE

NEMA PREMIUM EFFICIENCY

CRUSHER® DUTY

IEC TRU-METRIC™

PUMP MOTORS

DEFINITE PURPOSE

ADD-ON™ MODIFICATIONS

MOTOR TECHNICAL DATA

DRIVES & SOFT STARTERS

CONTROLS

APPLICATIONS STANDARD FEATURES SPECIAL INCLUDED FEATURES

- Pumping applications
- Pulp and paper mills
- Petrochemical
- Other
- Three-phase, II, IV or VI pole, 60Hz
- Voltage: 460V (3 wire)
- Totally enclosed fan cooled (TEFC)
- Inproseal
- Degree of protection: IP55
- Class 'F' insulation ('B' Temperature rise)
- Class 'H' resin
- Service Factor:
 - 1.25 - up to 100 HP
 - 1.15 - from 125HP and up
- Squirrel cage rotor / Aluminum die cast
- Ball bearings are supplied as standard
- 1045 Carbon Steel Shaft for frames up to 365T.
- 4140 steel shaft for motors 404T and above. (3600 RPM motors supplied with 1045)
- 143T up to 586/7 cast iron frame
- All cast iron reinforced construction: frame, endshields, terminal box and fan cover
- Stainless steel nameplate
- NEMA Ratings Design 'B'
- Corrosion resistant epoxy finish
- Color: RAL 6002 (Green)
- Regreasable ball bearings D.E. and O.D.E.
- Class 1, Div 2, Groups B, C & D, T3C

- Color: RAL 6002 (Green)
- IP55 and IP65: This brass seal has no contact surfaces to wear out.
- Bearing life 50,000 hours
- Paint: Epoxy polyamide enamel
- Non-sparking fan
- Internal epoxy paint

OPTIONAL FEATURES

- Special voltages
- Specially designed shaft
- Space heaters
- Second shaft end
- Thermistor, Thermostats or RTD's (PT100)
- Additional terminal box
- Drip cover (canopy) for shaft down applications
- Cable glands
- Flange mount



Note: All motors supplied with IEEE841 Test Report. Energy efficiency motors verified by UL in addition to the DOE.



IEEE 841 PETROCHEM

Meets IEEE - 2001 Specification



TEFC – NEMA PREMIUM – THREE-PHASE

HP	RPM	NEMA Frame	Catalog Number	List Price	Mult. Sym.	Approx. Shipp. Weight Lbs	FL Amps 460V	FL Eff. %	"C" Dimension (in.)	Voltage	Notes
1	1800	143T	00118ST3QIE143T	922	11	54	1.43	85.5	12.250	460V	
	1200	145T	00112ST3QIE145T	1,062	11	56	1.73	82.5	13.234	460V	
1.5	3600	143T	00156ST3QIE143T	981	11	45	1.98	84.0	12.250	460V	
	1800	145T	00158ST3QIE145T	981	11	56	2.00	86.5	13.234	460V	
2	1200	182T	00152ST3QIE182T	1,286	11	79	2.39	87.5	14.860	460V	
	3600	145T	00236ST3QIE145T	1,023	11	52	2.65	85.5	13.234	460V	
3	1800	145T	00218ST3QIE145T	1,023	11	58	2.63	86.5	13.234	460V	
	1200	184T	00212ST3QIE184T	1,363	11	97	3.23	88.5	15.860	460V	
5	3600	182T	00336ST3QIE182T	1,267	11	99	3.68	87.5	14.860	460V	
	1800	182T	00318ST3QIE182T	1,224	11	99	3.90	89.5	14.860	460V	
7.5	1200	213T	00312ST3QIE213T	1,537	11	134	4.41	89.5	18.021	460V	
	3600	184T	00536ST3QIE184T	1,429	11	114	5.76	89.5	15.860	460V	
10	1800	184T	00518ST3QIE184T	1,371	11	108	6.40	89.5	15.860	460V	
	1200	215T	00512ST3QIE215T	1,901	11	175	6.83	89.5	19.517	460V	
15	3600	213T	00736ST3QIE213T	1,751	11	134	8.63	91.0	18.021	460V	
	1800	213T	00718ST3QIE213T	1,646	11	165	9.29	91.7	18.021	460V	
20	1200	254T	00712ST3QIE254T	2,544	11	282	9.73	91.0	23.213	460V	
	3600	215T	01036ST3QIE215T	1,920	11	173	11.5	91.7	19.517	460V	
25	1800	215T	01018ST3QIE215T	1,760	11	172	12.6	91.7	19.517	460V	
	1200	256T	01012ST3QIE256T	2,834	11	316	13.3	91.0	24.945	460V	
30	3600	254T	01536ST3QIE254T	2,428	11	280	16.9	91.7	23.213	460V	
	1800	254T	01518ST3QIE254T	2,257	11	291	18.0	92.4	23.213	460V	
35	1200	284T	01512ST3QIE284T	4,203	11	360	17.3	91.7	26.433	460V	
	3600	256T	02036ST3QIE256T	2,957	11	313	22.9	92.4	24.945	460V	
40	1800	256T	02018ST3QIE256T	2,597	11	324	24.4	93.0	24.945	460V	
	1200	286T	02012ST3QIE286T	4,773	11	503	24.1	91.7	27.929	460V	
45	3600	284TS	02536ST3QIE284TS	3,368	11	353	28.4	93.0	25.061	460V	
	1800	284T	02518ST3QIE284T	2,926	11	481	29.5	93.6	26.433	460V	
50	1200	324T	02512ST3QIE324T	5,211	11	605	30.5	93.0	29.620	460V	
	3600	286TS	03036ST3QIE286TS	3,799	11	428	33.4	93.0	26.557	460V	
55	1800	286T	03018ST3QIE286T	3,509	11	525	35.1	93.6	27.929	460V	
	1200	326T	03012ST3QIE326T	5,359	11	673	35.8	93.0	31.116	460V	

- ELECTRICAL FEATURES ON PAGE B-26.
- MECHANICAL FEATURES ON PAGE B-78.

FRACTIONAL HP

GENERAL PURPOSE

NEMA PREMIUM EFFICIENCY

CRUSHER® DUTY

IEC TRU-METRIC™

PUMP MOTORS

DEFINITE PURPOSE

ADD-ON™ MODIFICATIONS

MOTOR TECHNICAL DATA

DRIVES & SOFT STARTERS

CONTROLS

IEEE 841 PETROCHEM



Meets IEEE - 2001 Specification



TEFC – NEMA PREMIUM – THREE-PHASE

HP	RPM	NEMA Frame	Catalog Number	List Price	Mult. Sym.	Approx. Shipp. Weight Lbs	FL Amps 460V	FL Eff. %	"C" Dimension (in.)	Voltage	Notes
40	3600	324TS	04036ST3QIE324TS	5,306	I1	561	45.8	93.6	28.120	460V	
	1800	324T	04018ST3QIE324T	4,692	I1	640	48.3	94.1	29.620	460V	
	1200	364T	04012ST3QIE364T	8,636	I1	1076	47.1	94.1	33.709	460V	
50	3600	326TS	05036ST3QIE326TS	5,970	I1	607	55.5	94.1	29.616	460V	
	1800	326T	05018ST3QIE326T	5,233	I1	662	60.6	94.5	31.116	460V	
	1200	365T	05012ST3QIE365T	9,369	I1	1127	58.0	94.1	33.709	460V	
60	3600	364TS	06036ST3QIE364TS	8,665	I1	992	68.3	94.1	31.583	460V	
	1800	364T	06018ST3QIE364T	8,044	I1	1036	68.4	95.0	33.709	460V	
	1200	404T	06012ST3QIE404T	11,790	I1	1346	70.4	94.5	38.077	460V	
75	3600	365TS	07536ST3QIE365TS	10,210	I1	1025	82.6	95.0	31.583	460V	
	1800	365T	07518ST3QIE365T	9,289	I1	1047	82.3	95.4	33.709	460V	
	1200	405T	07512ST3QIE405T	12,866	I1	1478	87.0	94.5	38.077	460V	
100	3600	405TS	10036ST3QIE405TS	12,806	I1	1361	111	95.0	35.077	460V	
	1800	405T	10018ST3QIE405T	12,471	I1	1302	112	95.4	38.077	460V	
	1200	444T	10012ST3QIE444T	17,933	I1	2006	121	95.0	43.776	460V	
125	3600	444TS	12536ST3QIE444TS	18,198	I1	1794	133	95.0	40.026	460V	
	1800	444T	12518ST3QIE444T	16,564	I1	1841	138	95.4	43.776	460V	
	1200	445T	12512ST3QIE445T	20,158	I1	2082	145	95.0	43.776	460V	
150	3600	445TS	15036ST3QIE445TS	21,433	I1	1865	161	95.4	40.026	460V	
	1800	445T	15018ST3QIE445T	18,587	I1	1940	170	95.8	43.776	460V	
	1200	447T	15012ST3QIE447T	23,181	I1	2738	174	94.8	47.299	460V	
	1200	504	15012ST3QIE504	23,181	I1	2738	174	94.8	49.449	460V	
200	3600	447TS	20036ST3QIE447TS	28,568	I1	2072	221	95.8	43.549	460V	
	1800	447T	20018ST3QIE447T	23,696	I1	2216	230	96.2	47.299	460V	
	1800	504	20018STEQIE504	23,696	I1	2216	230	96.2	49.449	460V	
	1200	447T	20012ST3QIE447T	26,205	I1	2816	234	95.8	47.299	460V	
	1200	505	20012ST3QIE505	26,205	I1	2816	234	95.8	49.449	460V	
250	3600	447TS	25036ST3QIE447TS	30,330	I1	2266	269	95.8	43.549	460V	
	3600	505S	25036ST3QIE505S	30,330	I1	2266	269	95.8	43.569	460V	
	1800	447T	25018ST3QIE447T	30,007	I1	2414	284	96.2	47.299	460V	
	1800	505	25018ST3QIE505	30,007	I1	2414	284	96.2	49.449	460V	
	1200	586/7	25012ST3QIE586/7	47,488	I1	4002	303	95.8	59.421	460V	
300	3600	586/7S	30036ST3QIE586/7S	48,246	I1	3374	328	95.8	48.845	460V	
	1800	586/7	30018ST3QIE586/7	39,540	I1	3837	338	96.2	59.421	460V	
	1200	586/7	30012ST3QIE586/7	50,135	I1	4487	351	95.8	59.421	460V	
350	3600	586/7S	35036ST3QIE586/7S	55,259	I1	3605	388	95.8	48.845	460V	
	1800	586/7	35018ST3QIE586/7	47,754	I1	4300	399	96.2	59.421	460V	
400	1800	586/7	40018ST3QIE586/7	52,344	I1	4723	426	95.8	59.421	460V	
	1200	586/7	40012ST3QIE586/7	65,795	I1	4961	491	95.8	59.421	460V	
450	1800	586/7	45018ST3QIE586/7	54,588	I1	5204	506	96.2	59.421	460V	
	1200	586/7	45012ST3QIE586/7	70,448	I1	5248	540	95.8	59.421	460V	
500	1800	586/7	50018ST3QIE586/7	57,601	I1	5424	568	96.2	59.421	460V	

- ELECTRICAL FEATURES ON PAGE B-26-B-27.
- MECHANICAL FEATURES ON PAGE B-78.

FRACTIONAL HP
GENERAL PURPOSE
NEMA PREMIUM EFFICIENCY
CRUSHER® DUTY
IEC TRU-METRIC™
PUMP MOTORS
DEFINITE PURPOSE
ADD-ON™ MODIFICATIONS
MOTOR TECHNICAL DATA
DRIVES & SOFT STARTERS
CONTROLS