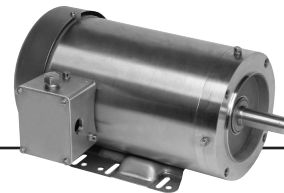


All Stainless Steel Washdown, Three Phase Totally Enclosed, C-Face



APPLICATIONS:

Designed to meet requirements for food processors, canners, meat packers, bakeries, dairies, drug and cosmetic manufacturers for sanitary, easily cleaned motors.

FEATURES:

- All Stainless Steel External Construction
- Inverter Grade[®] Insulation System (Meets NEMA[®] MG-1 Part 31)
- 303 Stainless Steel Shaft
- Multiple Stainless Steel T-type Drains
- Totally Enclosed Fan Cooled (TEFC) Except Where Noted
- VBX[®] Bearing Isolators by Inpro/Seal on both ends (Drive end only TENV)
- Double Contact Double Sealed Ball Bearings
- Laser-Etched Oversized Nameplate
- RTV-Sealed Lead Exit
- Nitrile Gasket on Conduit Box

Footed

HP	RPM	Voltage	Frame	Catalog Number	List	Discount Symbol	SF	"C" Dim. (inches)	Ship Wt. (lbs.)	Full Load Eff.	Full Load Amps	Notes
1/2	1800	208-230/460	56HC	WDS12S2AHC	\$906	DS-3PF	1.15	11.9	34	78.5	1.8-1.9/1	28
3/4	1800	208-230/460	56HC	WDS34S2AHC	\$937	DS-3PF	1.15	11.9	38	82.5	2.4-2.4/1.2	28
1	1800	208-230/460	143TC	WDS1E2AC	\$963	DS-3PF	1.15	11.9	39	85.5	3.1-2.9/1.4	28
	1800	208-230/460	56HC	WDS1S2AHC	\$963	DS-3PF	1.15	11.9	39	85.5	3.1-2.9/1.4	28
1-1/2	1800	208-230/460	145TC	WDS32E2AC	\$983	DS-3PF	1.15	13.2	46	86.5	4.3-4.1/2.1	-
2	1800	208-230/460	145TC	WDS2E2AC	\$1,197	DS-3PF	1.15	13.2	47	86.5	5.7-5.4/2.7	-

Footless

HP	RPM	Voltage	Frame	Catalog Number	List	Discount Symbol	SF	"C" Dim. (inches)	Ship Wt. (lbs.)	Full Load Eff.	Full Load Amps	Notes
1/2	1800	208-230/460	56C	WDS12S2ACR	\$886	DS-3PF	1.15	11.9	34	78.5	1.8-1.9/1	28
3/4	1800	208-230/460	56C	WDS34S2ACR	\$912	DS-3PF	1.15	11.9	38	82.5	2.4-2.4/1.2	28
1	1800	208-230/460	143TC	WDS1S2ACR	\$942	DS-3PF	1.15	11.9	39	85.5	3.1-2.9/1.4	28
	1800	208-230/460	56C	WDS1S2AFCR	\$942	DS-3PF	1.15	11.9	39	85.5	3.1-2.9/1.4	28
1-1/2	1800	208-230/460	145TC	WDS32S2ACR	\$963	DS-3PF	1.15	13.2	46	86.5	4.3-4.1/2.1	-
	1800	208-230/460	56C	WDS32S2AFCR	\$963	DS-3PF	1.15	13.2	46	86.5	4.3-4.1/2.1	-
2	1800	208-230/460	145TC	WDS2S2ACR	\$1,171	DS-3PF	1.15	13.2	47	86.5	5.7-5.4/2.7	-
	1800	208-230/460	56C	WDS2S2AFCR	\$1,171	DS-3PF	1.15	13.2	49	86.5	5.7-5.4/2.7	-



Note 28 TENV Enclosure

† All non-Emerson Electric Co. marks shown within this document are properties of their other respective owners