

CLOSE COUPLED PUMP MOTORS

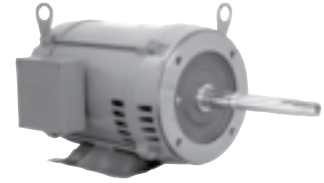
STANDARD EFFICIENCY



JM

ODP – THREE PHASE

WEG offers both JM and JP standardized types of ODP close coupled pump line of motors. Remember that ODP are suitable where dirt and moisture are at a minimum.



JP

FRACTIONAL HP

GENERAL PURPOSE

NEMA PREMIUM EFFICIENCY

CRUSHER® DUTY

IEC TRU-METRIC™

PUMP MOTORS

DEFINITE PURPOSE

ADD-ON™ MODIFICATIONS

MOTOR TECHNICAL DATA

DRIVES & SOFT STARTERS

CONTROLS

APPLICATIONS

Specially developed line for industrial and commercial pumping applications.

- Water pumping
- Process
- Transfer and circulating pumps

STANDARD FEATURES

- Three-phase, II and IV pole, 60Hz
- Voltage: 208-230/460V, 460
- Squirrel cage rotor / Aluminum die cast
- Open drip proof (ODP)
- Class 'F' Insulation
- Temperature rise: Class 'B' (80°C)
- Service factor: 1.15
- NEMA dimensions
- Continuous duty (S1)
- 104°F (40°C) ambient temperature
- Altitude: 3300ft (1000m)
- Stainless steel name plate
- 1045 carbon steel shaft
- F1 mount (with cast iron 'C' flange)
- Paint: Enamel alkyd resin base
- Color: RAL 7022 (Dark Gray)
- NPT threaded terminal box

OPTIONAL FEATURES

- Cable glands
- Special Voltages
- Cast iron NEMA C-flange or D-flange (D-flange only for frames 254T and up)
- Special designed shaft
- Second shaft end
- Thermistors, Thermostats or RTD's (PT100)
- Roller bearing on drive end
- IEC metric frames (on request) for frame 254T up to 445T
- Stainless steel shaft
- Class H insulation
- Design C
- 575V

FRAME – SPECIFIC FEATURES

FOR FRAME 143/5JM/JP, ONLY

- Welded steel plate frames (welded feet)
- Cast iron endshields fixed with through bolt construction
- 'ZZ' bearings (double shielded)
- Degree of protection: IP21

FOR FRAME 182JM up to 215JM

- Welded steel plate frames (welded feet)
- Aluminum endshields and Terminal box
- Cooling system with finned rotor
- Cast iron endshields fixed with through bolt construction
- "ZZ" bearings (double shielded)
- Degree of protection: IP21

FOR FRAME 254JM UP TO 445JM

- Cast iron frames
- Cast iron endshields and terminal box
- Cooling system with finned rotor
- Regreasable bearings positive pressure lubrication system (frame 254T and up)
- Degree of protection: IP23

ALL MOTORS ARE TESTED ACCORDING TO IEEE 112 STD. - METHOD 'B' OR C390 CSA



APPROVED BY



E 104590



APPROVED BY



LR 38324



CLOSE COUPLED PUMP MOTORS

STANDARD EFFICIENCY



"JM" TYPE - ODP - THREE-PHASE

HP	RPM	NEMA Frame	Catalog Number	List Price	Mult. Sym.	Approx. Shipp. Weight Lbs	FL Amps 460V	FL Eff. %	"C" Dimension (in.)	Voltage	Notes
1	1800	143JM	00118OS3E143JM	379	P1C	36	1.52	78.5	14.055	208-230/460V	
1.5	3600	143JM	00156OS3E143JM	400	P1C	32	2.07	78.5	14.055	208-230/460V	
	1800	145JM	00158OS3E145JM	414	P1C	41	2.19	77.0	14.055	208-230/460V	
2	3600	145JM	00236OS3E145JM	432	P1C	43	2.71	80.0	14.055	208-230/460V	
	1800	145JM	00218OS3E145JM	433	P1C	43	2.72	82.5	14.055	208-230/460V	
3	3600	145JM	00336OS3E145JM	482	P1C	49	3.92	80.0	14.055	208-230/460V	
	1800	182JM	00318OS3E182JM	507	P1C	56	3.94	82.5	14.527	208-230/460V	
5	3600	182JM	00536OS3E182JM	628	P1C	57	6.15	85.5	14.527	208-230/460V	
	1800	184JM	00518OS3E184JM	652	P1C	69	6.50	84.0	15.315	208-230/460V	
7.5	3600	184JM	00736OS3E184JM	785	P1C	69	8.85	86.5	15.315	208-230/460V	
	1800	213JM	00718OS3E213JM	886	P1C	85	9.75	87.5	17.323	208-230/460V	
10	3600	213JM	01036OS3E213JM	1,007	P1C	108	12.1	87.5	17.323	208-230/460V	
	1800	215JM	01018OS3E215JM	1,078	P1C	109	12.5	86.5	17.323	208-230/460V	
15	3600	215JM	01536OS3E215JM	1,264	P1C	139	18.0	85.5	17.323	208-230/460V	
	1800	254JM	01518OS3E254JM	1,513	P1C	194	20.0	87.5	22.169	208-230/460V	
20	3600	254JM	02036OS3E254JM	1,571	P1C	213	25.5	86.8	22.169	208-230/460V	
	1800	256JM	02018OS3E256JM	1,825	P1C	258	26.3	88.5	23.902	208-230/460V	
25	3600	256JM	02536OS3E256JM	1,941	P1C	262	30.2	88.5	23.902	208-230/460V	
	1800	284JM	02518OS3E284JM	2,209	P1C	300	30.3	90.2	24.261	208-230/460V	
30	3600	284JM	03036OS3E284JM	2,365	P1C	300	37.2	89.5	24.261	208-230/460V	
	1800	286JM	03018OS3E286JM	2,549	P1C	346	36.3	89.5	25.754	208-230/460V	
40	3600	286JM	04036OS3E286JM	2,822	P1C	388	47.5	90.2	25.754	208-230/460V	
	1800	324JM	04018OS3E324JM	2,824	P1C	424	52.0	90.2	26.431	208-230/460V	
50	3600	324JM	05036OS3E324JM	3,610	P1C	471	57.0	92.4	26.431	208-230/460V	
	1800	326JM	05018OS3E326JM	3,553	P1C	515	64.0	91.0	27.927	208-230/460V	
60	3600	326JM	06036OS3E326JM	4,208	P1C	552	69.5	92.4	27.927	208-230/460V	
	1800	364JM	06018OS3E364JM	4,549	P1C	705	73.4	91.6	29.139	208-230/460V	
75	3600	364JM	07536OS3E364JM	5,390	P1C	681	84.0	93.0	29.139	208-230/460V	
	1800	365JM	07518OS3E365JM	5,185	P1C	749	88.6	91.7	29.139	208-230/460V	
100	3600	365JM	10036OS3E365JM	6,368	P1C	727	112	93.0	29.139	208-230/460V	
	3600	365JM	10036OS3G365JM	6,368	P1C	727	112	93.0	29.139	460V	

- ELECTRICAL FEATURES ON PAGE B-33.
- MECHANICAL FEATURES ON PAGE B-84 - B-85.

FRACTIONAL HP

GENERAL PURPOSE

NEMA PREMIUM EFFICIENCY

CRUSHER® DUTY

IEC TRU-METRIC™

PUMP MOTORS

DEFINITE PURPOSE

ADD-ON™ MODIFICATIONS

MOTOR TECHNICAL DATA

DRIVES & SOFT STARTERS

CONTROLS

CLOSE COUPLED PUMP MOTORS STANDARD EFFICIENCY



3" TFE - OB - THREE-PHASE

HP	RPM	NEMA Frame	Catalog Number	List Price	Mult. Sym.	Approx. Shipp. Weight Lbs	FL Amps 460V	FL Eff. %	"C" Dimension (in.)	Voltage	Notes
1	1800	143JP	00118OS3E143JP	379	P1C	36	1.52	78.5	17.126	208-230/460V	
	3600	143JP	00156OS3E143JP	400	P1C	32	2.07	78.5	17.126	208-230/460V	
1.5	1800	145JP	00158OS3E145JP	414	P1C	41	2.19	77.0	17.126	208-230/460V	
	3600	145JP	00236OS3E145JP	432	P1C	43	2.71	80.0	17.126	208-230/460V	
2	1800	145JP	00218OS3E145JP	433	P1C	43	2.72	82.5	17.126	208-230/460V	
	3600	145JP	00336OS3E145JP	482	P1C	49	3.92	80.0	17.126	208-230/460V	
3	1800	182JP	00318OS3E182JP	507	P1C	56	3.94	82.5	20.236	208-230/460V	
	3600	182JP	00536OS3E182JP	628	P1C	57	6.15	85.5	20.236	208-230/460V	
5	1800	184JP	00518OS3E184JP	652	P1C	69	6.5	84.0	21.023	208-230/460V	
	3600	184JP	00736OS3E184JP	785	P1C	69	8.85	86.5	21.023	208-230/460V	
7.5	1800	213JP	00718OS3E213JP	886	P1C	85	9.75	87.5	21.240	208-230/460V	
	3600	213JP	01036OS3E213JP	1,007	P1C	108	12.1	87.5	21.240	208-230/460V	
10	1800	215JP	01018OS3E215JP	1,078	P1C	109	12.5	86.5	21.240	208-230/460V	
	3600	215JP	01536OS3E215JP	1,264	P1C	139	18.0	85.5	21.240	208-230/460V	
15	1800	254JP	01518OS3E254JP	1,513	P1C	194	20.0	87.5	25.049	208-230/460V	
	3600	254JP	02036OS3E254JP	1,571	P1C	213	25.5	86.8	25.049	208-230/460V	
20	1800	256JP	02018OS3E256JP	1,825	P1C	258	26.3	88.5	26.782	208-230/460V	
	3600	256JP	02536OS3E256JP	1,941	P1C	262	30.2	88.5	26.782	208-230/460V	
25	1800	284JP	02518OS3E284JP	2,209	P1C	300	30.3	90.2	27.141	208-230/460V	
	3600	284JP	03036OS3E284JP	2,365	P1C	300	37.2	89.5	27.141	208-230/460V	
30	1800	286JP	03018OS3E286JP	2,549	P1C	346	36.3	89.5	28.634	208-230/460V	
	3600	286JP	04036OS3E286JP	2,822	P1C	388	47.5	90.2	28.634	208-230/460V	
40	1800	324JP	04018OS3E324JP	2,810	P1C	424	52.0	90.2	29.311	208-230/460V	
	3600	324JP	05036OS3E324JP	3,610	P1C	471	57.0	92.4	29.311	208-230/460V	
50	1800	326JP	05018OS3E326JP	3,553	P1C	515	64.0	91.0	30.807	208-230/460V	
	3600	326JP	06036OS3E326JP	4,208	P1C	552	69.5	92.4	30.807	208-230/460V	
60	1800	364JP	06018OS3E364JP	4,549	P1C	705	73.4	91.6	32.019	208-230/460V	
	3600	364JP	07536OS3E364JP	5,390	P1C	681	84.0	93.0	32.019	208-230/460V	
75	1800	365JP	07518OS3E365JP	5,185	P1C	749	88.6	91.7	32.019	208-230/460V	
	3600	365JP	10036OS3E365JP	6,368	P1C	727	112	93.0	32.019	208-230/460V	
	3600	365JP	10036OS3G365JP	6,368	P1C	727	112	93.0	32.019	460V	
100	1800	404JP	10018OS3E404JP	6,468	P1C	828	121	92.4	35.263	208-230/460V	
	1800	404JP	10018OS3G404JP	6,468	P1C	828	121	92.4	35.263	460V	
	3600	404JP	12536OS3G404JP	8,791	P1C	1070	135	92.4	35.263	460V	
125	1800	405JP	12518OS3G405JP	8,156	P1C	883	146	92.4	35.263	460V	
	3600	405JP	15036OS3G405JP	11,585	P1C	1125	163	92.4	35.263	460V	

- ELECTRICAL FEATURES ON PAGE B-34.
- MECHANICAL FEATURES ON PAGE B-84-B-85.

FRACTIONAL HP

GENERAL PURPOSE

NEMA PREMIUM EFFICIENCY

CRUSHER DUTY

IEC TRU-METRIC™

PUMP MOTORS

FINITE PURPOSE

ALDN™ MODIFICATIONS

MOTOR TECHNICAL DATA

BISS & SOFT STARTERS

CONTROLS



CLOSE COUPLED PUMP MOTORS

STANDARD EFFICIENCY



1" TPE - OD - VERTICAL MOTORS

HP	RPM	NEMA Frame	Catalog Number	List Price	Mult. Sym.	Approx. Shipp. Weight Lbs	FL Amps 460V	FL Eff. %	"C" Dimension (in.)	Voltage	Notes
1	1800	143JMV	00118OS3E143JMV	454	P1	36	1.52	78.5	15.196	208-230/460V	
1.5	1800	145JMV	00158OS3E145JMV	486	P1	41	2.19	77.0	15.196	208-230/460V	
2	1800	145JMV	00218OS3E145JMV	505	P1	43	2.72	82.5	15.196	208-230/460V	
3	1800	182JMV	00318OS3E182JMV	637	P1	56	3.94	82.5	15.904	208-230/460V	
5	3600	182JMV	00536OS3E182JMV	758	P1	57	6.15	85.5	15.904	208-230/460V	
	1800	184JMV	00518OS3E184JMV	783	P1	69	6.50	84.0	16.692	208-230/460V	
7.5	3600	184JMV	00736OS3E184JMV	915	P1	69	8.85	86.5	16.692	208-230/460V	
	1800	213JMV	00718OS3E213JMV	1,051	P1	85	9.75	87.5	18.700	208-230/460V	
10	3600	213JMV	01036OS3E213JMV	1,172	P1	108	12.1	87.5	18.700	208-230/460V	
	1800	215JMV	01018OS3E215JMV	1,243	P1	109	12.5	86.5	18.700	208-230/460V	
15	3600	215JMV	01536OS3E215JMV	1,428	P1	139	18.0	85.5	18.700	208-230/460V	
20	3600	254JMV	02036OS3E254JMV	1,835	P1	213	25.5	86.8	23.507	208-230/460V	
25	3600	256JMV	02536OS3E256JMV	2,205	P1	262	30.2	88.5	23.902	208-230/460V	
30	3600	284JMV	03036OS3E284JMV	2,699	P1	300	37.2	89.5	24.261	208-230/460V	
40	3600	286JMV	04036OS3E286JMV	3,156	P1	388	47.5	90.2	27.368	208-230/460V	
50	3600	324JMV	05036OS3E324JMV	4,032	P1	471	57.0	92.4	29.147	208-230/460V	

- ELECTRICAL FEATURES ON PAGE B-33.
- MECHANICAL FEATURES ON PAGE B-84-B-85.



1" TPE - OD - VERTICAL MOTORS

HP	RPM	NEMA Frame	Catalog Number	List Price	Mult. Sym.	Approx. Shipp. Weight Lbs	FL Amps 460V	FL Eff. %	"C" Dimension (in.)	Voltage	Notes
1.5	3600	143JPV	00156OS3E143JPV	486	P1	32	2.07	78.5	17.126	208-230/460V	
2	3600	145JPV	00236OS3E145JPV	518	P1	43	2.71	80.0	17.126	208-230/460V	
3	3600	145JPV	00336OS3E145JPV	613	P1	49	3.92	80.0	17.126	208-230/460V	
5	3600	182JPV	00536OS3E182JPV	783	P1	57	6.15	85.5	20.236	208-230/460V	
7.5	3600	184JPV	00736OS3E184JPV	915	P1	69	8.85	86.5	22.400	208-230/460V	
10	3600	213JPV	01036OS3E213JPV	1,172	P1	108	12.1	87.5	22.617	208-230/460V	
15	3600	215JPV	01536OS3E215JPV	1,428	P1	139	18.0	85.5	22.617	208-230/460V	
20	3600	254JPV	02036OS3E254JPV	1,835	P1	213	25.5	86.8	26.387	208-230/460V	
25	3600	256JPV	02536OS3E256JPV	2,205	P1	262	30.2	88.5	26.782	208-230/460V	
30	3600	284JPV	03036OS3E284JPV	2,699	P1	300	37.2	89.5	28.755	208-230/460V	
40	3600	286JPV	04036OS3E286JPV	3,156	P1	388	47.5	90.2	30.248	208-230/460V	
50	3600	324JPV	05036OS3E324JPV	4,032	P1	471	57.0	92.4	29.311	208-230/460V	

- ELECTRICAL FEATURES ON PAGE B-34.
- MECHANICAL FEATURES ON PAGE B-84-B-85.

FRACTIONAL HP

GENERAL PURPOSE

NEMA PREMIUM EFFICIENCY

CRUSHER DUTY

IEC TRU-METRIC™

PUMP MOTORS

FINITE PURPOSE

ADDITIONAL MODIFICATIONS

MOTOR TECHNICAL DATA

BISS & SOFT STARTERS

CONTROLS