

Applications: General purpose fixed speed including conveyors, material handling equipment and packaging machinery.

Features: Three and single-phase motor designs. High strength bronze gearing, hardened and ground worm for quiet operation. Permanently lubricated with synthetic Klubersynth UH1-6-460 oil, USDA food grade lubrication for H1 applications. Internal oil expansion bladder allows for multiple mounting positions, without relocating a breather vent. Double output hollow output bore is 1.00" with keyway for greater mounting flexibility. Supplied with torque arm and cover for exposed end of shaft.



GHL and GHM Shown
H Style

| Input Motor Hp | Output RPM 60 Hz | Gear Ratio | Max. Safe Torque In. Lbs. | Catalog Number ^(a) | List Price | Mult. Sym. | Ap'x. Shpg. Wgt. | Motor Type & Gear Style | Enclosure | Voltage | Notes ^(b) |
|---------------------|------------------|------------|---------------------------|-------------------------------|------------|------------|------------------|-------------------------|-----------|-------------|----------------------|
| Single Phase | | | | | | | | | | | |
| 1/2 | 29 | 60:1 | 600 | GHL35060 | 822 | DS | 45 | 3421L-H | TEFC | 115/230 | 33 |
| | 58 | 30:1 | 350 | GHL35030 | 822 | DS | 45 | 3421L-H | TEFC | 115/230 | 33 |
| | 88 | 20:1 | 250 | GHL35020 | 822 | DS | 45 | 3421L-H | TEFC | 115/230 | 33 |
| | 175 | 10:1 | 150 | GHL35010 | 822 | DS | 45 | 3421L-H | TEFC | 115/230 | 33 |
| 3/4 | 58 | 30:1 | 550 | GHL37530 | 883 | DS | 50 | 3428LC-H | TEFC | 115/230 | 33 |
| | 88 | 20:1 | 420 | GHL37520 | 883 | DS | 50 | 3428LC-H | TEFC | 115/230 | 33 |
| | 175 | 10:1 | 230 | GHL37510 | 883 | DS | 50 | 3428LC-H | TEFC | 115/230 | 33 |
| 1 | 58 | 30:1 | 750 | GHL31030 | 1,009 | DS | 55 | 3524L-H | TEFC | 115/230 | 33 |
| | 88 | 20:1 | 550 | GHL31020 | 1,009 | DS | 55 | 3524L-H | TEFC | 115/230 | 33 |
| | 175 | 10:1 | 300 | GHL31010 | 1,009 | DS | 55 | 3524L-H | TEFC | 115/230 | 33 |
| Three Phase | | | | | | | | | | | |
| 1/2 | 29 | 60:1 | 600 | GHM35060 | 792 | DS | 40 | 3416M-H | TEFC | 230/460 | 30,33 |
| | 44 | 40:1 | 672 | GHM35050 | 792 | DS | 50 | 3428LC-H | TEFC | 230/460 | 30,33 |
| | 35 | 50:1 | 646 | GHM35040 | 792 | DS | 50 | 3428LC-H | TEFC | 230/460 | 30,33 |
| | 58 | 30:1 | 350 | GHM35030 | 792 | DS | 40 | 3416M-H | TEFC | 230/460 | 30,33 |
| | 87 | 20:1 | 200 | GHM35020 | 792 | DS | 40 | 3416M-H | TEFC | 230/460 | 30,33 |
| | 174 | 10:1 | 135 | GHM35010 | 792 | DS | 40 | 3416M-H | TEFC | 230/460 | 30,33 |
| 3/4 | 58 | 30:1 | 550 | GHM37530 | 815 | DS | 42 | 3420M-H | TEFC | 208-230/460 | 33 |
| | 88 | 20:1 | 420 | GHM37520 | 815 | DS | 42 | 3420M-H | TEFC | 208-230/460 | 33 |
| | 175 | 10:1 | 230 | GHM37510 | 815 | DS | 42 | 3420M-H | TEFC | 208-230/460 | 33 |
| 1 | 58 | 30:1 | 750 | GHM31030 | 837 | DS | 45 | 3426M-H | TEFC | 208-230/460 | 33 |
| | 88 | 20:1 | 550 | GHM31020 | 837 | DS | 45 | 3426M-H | TEFC | 208-230/460 | 33 |
| | 175 | 10:1 | 300 | GHM31010 | 837 | DS | 45 | 3426M-H | TEFC | 208-230/460 | 33 |

^(a) Vertical motor below gearhead not recommended.

Avoiding those positions where the high speed oil seal is immersed in oil, will provide greater security against high speed input seal wear.

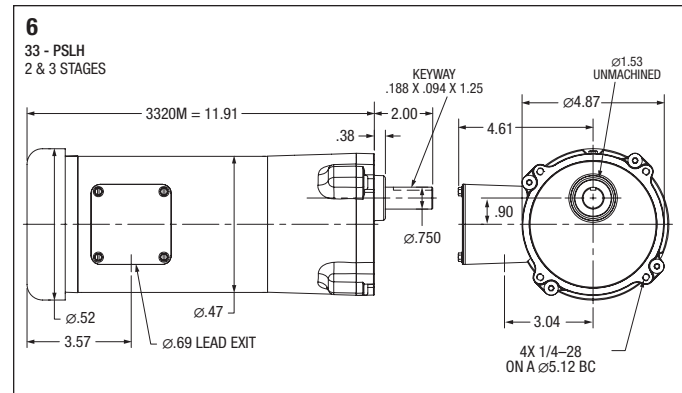
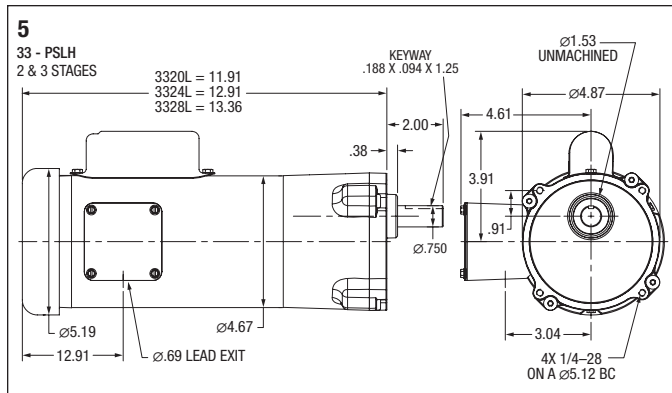
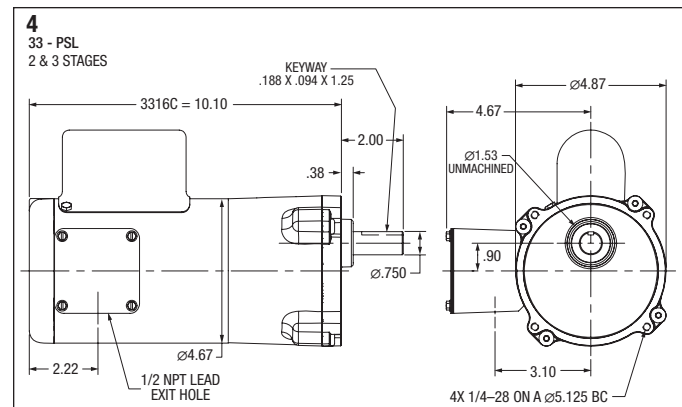
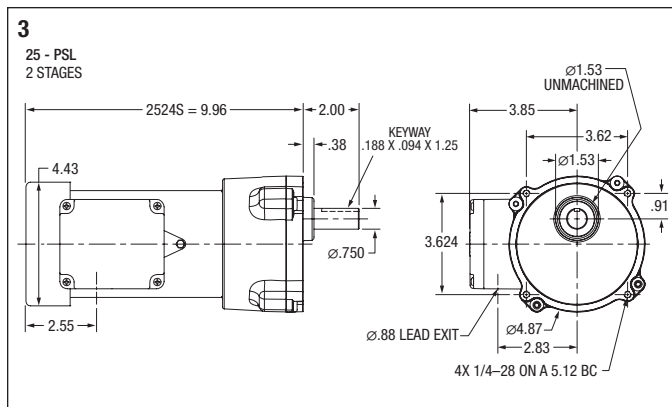
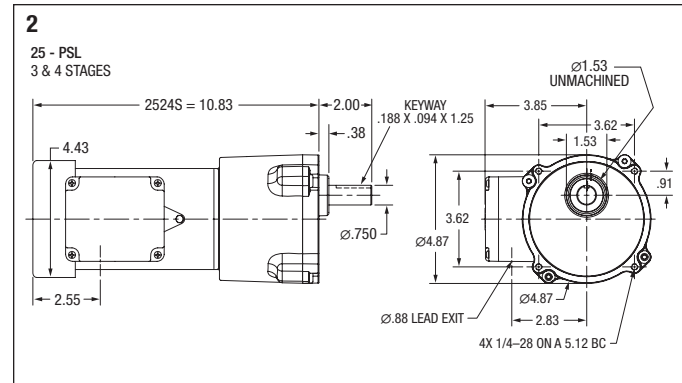
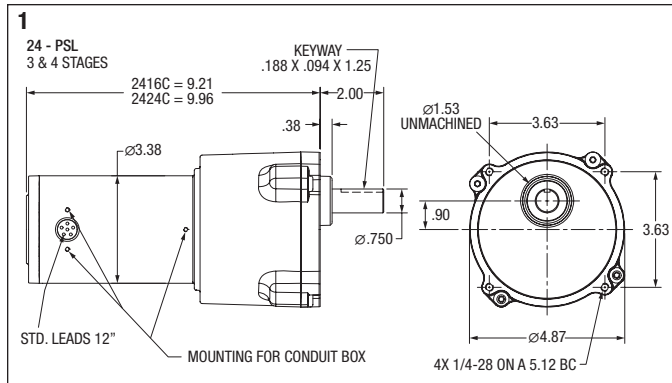
^(b) See notes on inside back flap and pages 5-6.

H Gearbox Accessories



Baldor offers optional base and shaft kits for H style gearmotors. Adding a base and shaft kit allows them to be used in applications requiring a right-angle shaft extension. The shaft can be used for either right or left hand output applications.

| Catalog Number | Description | List Price | Mult. Sym. | Ap'x. Shpg. Wgt. |
|----------------|------------------|------------|------------|------------------|
| B19H71 | Horiz Base Kit | 56 | A8 | 1 |
| SH10HS | Output Shaft Kit | 17 | A8 | 2 |



"L" Type Mounting Brackets



Applications: Mounting bracket for PSSH and PSL gear motors. Securely mounts to gear face in 90 degree locations for floor, wall or ceiling mount. Catalog LB74 is not recommended for PSL/PSLH units weighing over 20 lbs. For units weighing more than 20 lbs. use LB75.

| Catalog Number | List Price | Mult. Sym. | Ap'x. Shpg. Wgt |
|----------------|------------|------------|-----------------|
| LB73 | 33 | A8 | 2 |
| LB73GR | 33 | A8 | 10 |
| LB74 | 47 | A8 | 2 |
| LB75 | 66 | A8 | 1 |

NOTE: Painted Baldor gray. LB73 & LB73GR for PSSH style gearmotors, LB74 & LB75 for PSL/PSLH style gearmotors.



Applications: Conveyors, medical and laboratory equipment, printing presses, commercial ovens, machine tools and other applications requiring adjustable speed.

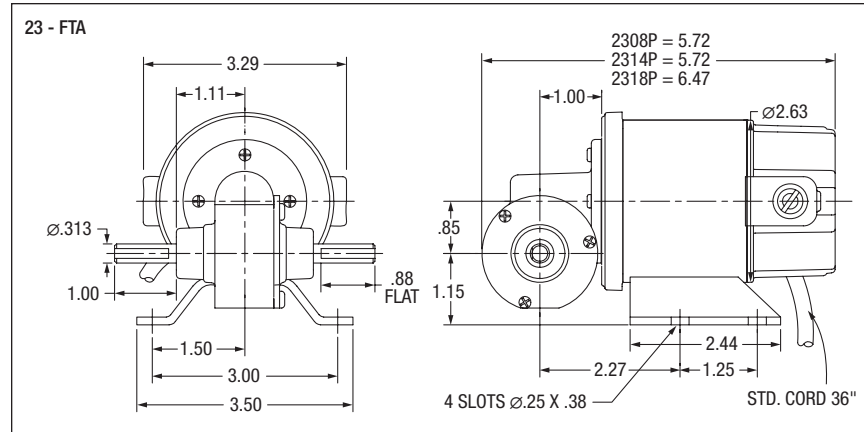
Features: DCPM motor provides exceptional starting torque, adjustable speed, and predictable performance over a wide range of operating conditions. Bronze sleeve bearing on output for smooth torque transmission. High strength bronze gearing and hardened and ground worm for quiet operation. Hardened and ground worm for quiet operation. Permanently lubricated with synthetic grease lubrication, can be mounted in all positions including vertical motor below gearhead.

GP231003 Shown
FTA Style

| Input Motor Hp | Output Base Speed | Gear Ratio | Max. Safe Torque In. Lbs. | Catalog Number | List Price | Mult. Sym. | Ap'x. Shpg. Wgt. | Motor Type & Gear Style | Voltage D.C. Armature | Full Load Amperage Armature | Notes (b) |
|-------------------|-------------------|------------|---------------------------|-----------------|------------|------------|------------------|-------------------------|-----------------------|-----------------------------|-----------|
| Foot Mount | | | | | | | | | | | |
| 1/50 | 87 | 20:1 | 7.3 | GP231003 | 297 | DS | 5 | 2308P-FTA | 90 | 0.34 | 20 |
| 1/25 | 140 | 12:1 | 11 | GP231002 | 320 | DS | 5 | 2314P-FTA | 90 | 0.54 | 20 |
| 1/17 | 312 | 8:1 | 6 | GP231001 | 320 | DS | 5 | 2314P-FTA | 90 | 0.62 | 20 |
| 1/25 | 344 | 5:1 | 5.1 | GP232001 | 320 | DS | 5 | 2314P-FTA | 90 | 0.49 | 20 |

(b) See notes on inside back flap and pages 5-6.

23 - FTA





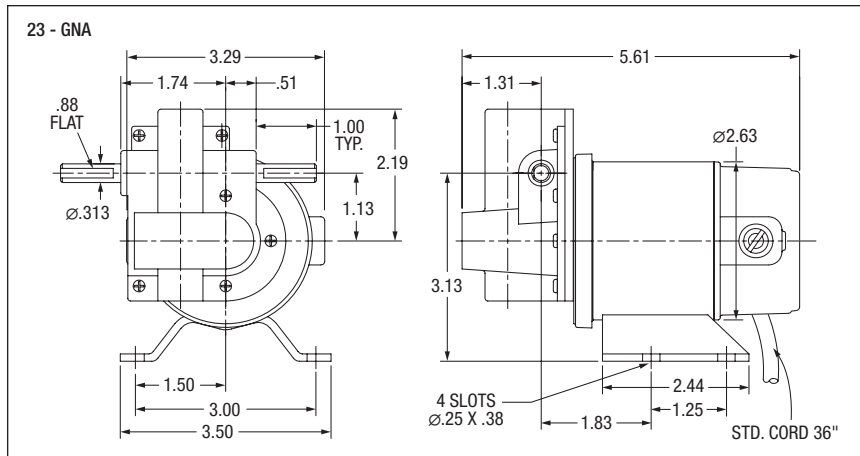
GP231005 Shown
GNA Style

Applications: Conveyors, medical and laboratory equipment, printing presses, commercial ovens, machine tools and other applications requiring adjustable speed.

Features: DCPM motor provides exceptional starting torque, adjustable speed, and predictable operating conditions. High strength bronze gearing for increased torque capacity. High performance low friction, bidirectional motor seals. Permanently lubricated for life with synthetic grease lubrication, can be mounted in all positions including vertical motor below gearhead.

| Input Motor Hp | Output Base Speed | Gear Ratio | Max. Safe Torque In. Lbs. | Catalog Number | List Price | Mult. Sym. | Ap'x. Shpg. Wgt. | Motor Type & Gear Style | Voltage D.C. Armature | Full Load Amperage Armature | Notes ^(b) |
|-------------------|-------------------|------------|---------------------------|-----------------|------------|------------|------------------|-------------------------|-----------------------|-----------------------------|----------------------|
| Foot Mount | | | | | | | | | | | |
| 1/97 | 8.2 | 225:1 | 15 | GP231005 | 312 | DS | 5 | 2308P-GNA | 90 | 0.19 | 20 |

^(b) See notes on inside back flap and pages 5-6.



Gearmotors and Gear Products

Motor Accessories

Grinders

Generators

Servo Motors and Controls

Mod Express

Baldor Education Workshops

Warranties and Sales Policies

Cross Reference and Index

Baldor Sales Offices