

Low Flow Saves on Water and Chemicals

Toftejorg MiniSpinner Rotary Spray Head

Application

The Toftejorg MiniSpinner is a rotary spray head that uses cleaning media to provide coverage and impact. The device represents an effective alternative to traditional static spray balls because it uses low volumes of cleaning fluid at low pressure. The double ball bearing in the Toftejorg MiniSpinner's rotating head makes the device suitable for all industrial cleaning applications, including tanks, reactors, vessels and other containers ranging from 0.05 m³ to 2 m³ (10 - 500 US gallons), depending on dimensions and cleaning task. Assistance with optimal application positioning and other technical recommendations are available in CAD format.

Working Principle

The flow of the cleaning media causes the head of the Toftejorg MiniSpinner to rotate, and the fan-shaped jets lay out a swirling pattern throughout the tank or reactor. This generates the impact needed for the efficient removal of residual product; the cascading flow covers all internal surfaces of the vessel.

Standard Design

The Toftejorg MiniSpinner is available in Hastelloy C4. Both 1.4401 (316) and Hastelloy C4 are available in polished versions. As standard documentation, the Toftejorg MiniSpinner can be supplied with a "Declaration of Conformity" for material specifications, and 3.1.B certification can be quoted on request.

Materials

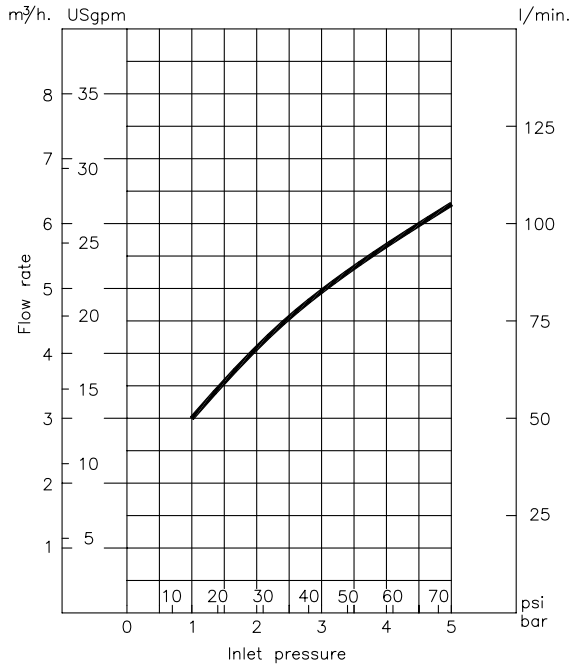
Housing, Inlet connection, Head: 1.4404 (316L), Balls: 1.4401 (316)



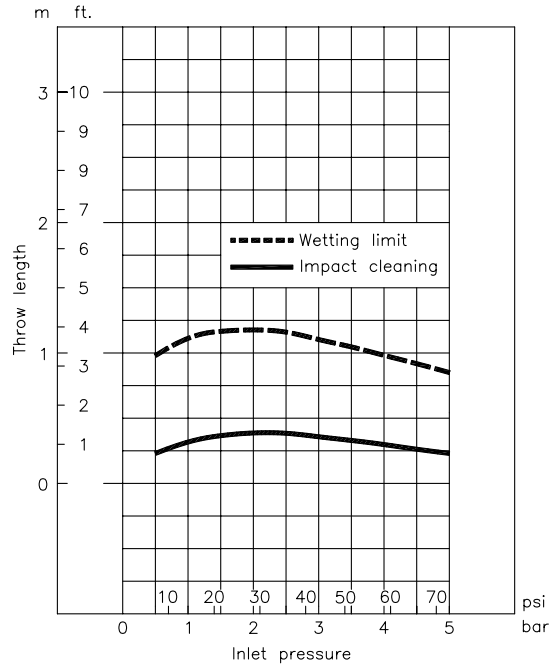
Technical Data

Weight:	280 g (0.6 lbs)
Lubricant:	Self-lubricating with the cleaning fluid
Working pressure:	1 - 10 bar (14.5 - 145 psi)
Recommended pressure:	1 - 3 bar (14.5 - 44 psi)
Max. working temperature:	110 °C (230 °F)
Max. ambient temperature:	180 °C (356 °F)
Spray pattern:	Cleaning pattern 295° to 340° down Max. radius 750 mm (2 ft)
Wetting pattern:	Wetting pattern 360° Max. radius 1.25 m (4 ft)
Min. tank opening:	35 mm diameter (DN 40)
Connection:	3/4" BSP thread Weld-on for pipe

Flow Rate

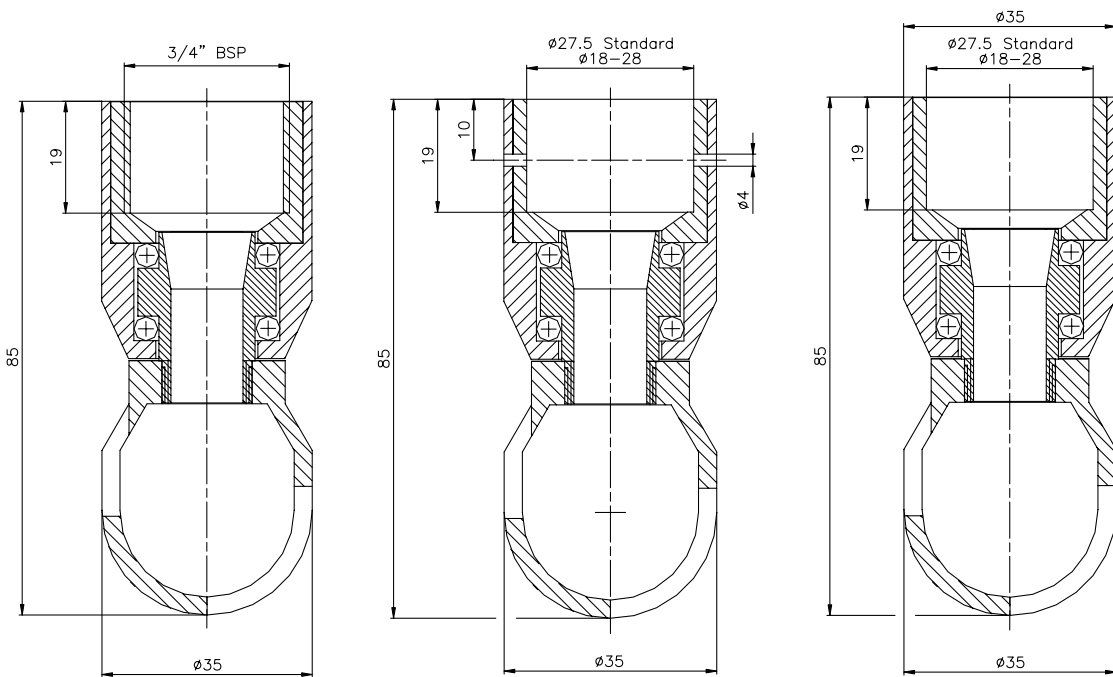


Cleaning Radius



For clip-on models, the flow rate is increased by approx 0.5 m³/h.

Dimensions (mm)



Ordering

Please specify desired spray pattern, required connections, material selection and type of certification required. Please also confirm the application suitability.

Options

- Downpipe assemblies with Tri-Clamp fittings and flange connections in 1.4401 (316) or Hastelloy C4
- Spray pattern of 180° and 90° down can be quoted on request